

DE HVMANI CORPORIS FABRICA LIBER I. 163  
HVMANI COR-  
SIMVL COMPACTO.  
EX FACIE EXPRES.  
PORIS OSSIVM  
RPN ANTERIORI  
SID.



# MEDD 411 ANATOMY



*KURT MCBURNEY, ASSOCIATE TEACHING PROFESSOR - IMP*  
*NICHOLAS BYERS - SMP*  
*PETER BAUMEISTER - SMP*



a place of mind

THE UNIVERSITY OF BRITISH COLUMBIA

**Faculty of Medicine**

Southern Medical Program

# Proof of Permission for Cadaveric Photos



## Island Medical Program

The University of British Columbia  
Faculty of Medicine MD  
Undergraduate Program  
delivered in collaboration with  
the University of Victoria

Kurt McBumey  
Associate Teaching Professor  
Island Medical Program/Division of Medical Sciences  
University of British Columbia and University of Victoria  
[mcbumey@uvic.ca](mailto:mcbumey@uvic.ca)  
250-472-5336 (office)  
250-418-1542 (cell)

To Whom It May Concern:

During 6 week FLEX cycle of April/May 2018, Peter Baumeister and Nick Byers completed a dissection/learning resource project here at the Island Medical Program. They completed dissections of the lower limb corresponding to the upcoming fall gross anatomy laboratories.

As part of this project they took photographs of their dissections with the purpose of creating digital index cards which will help students in future labs with these lower limb dissections. Long before they began the project they asked for, and received, my permission to take and subsequently use the photos to create the digital index cards.

As a final check—as protection for themselves, their work and my responsibility for cadaveric donations—I will vet the final versions of the digital index cards to ensure there are no concerns regarding the photographs and the cadaveric material.

Thank you,

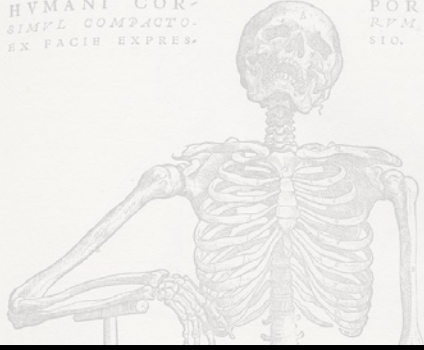
Kurt McBumey



a place of mind  
THE UNIVERSITY OF BRITISH COLUMBIA

Faculty of Medicine  
Southern Medical Program

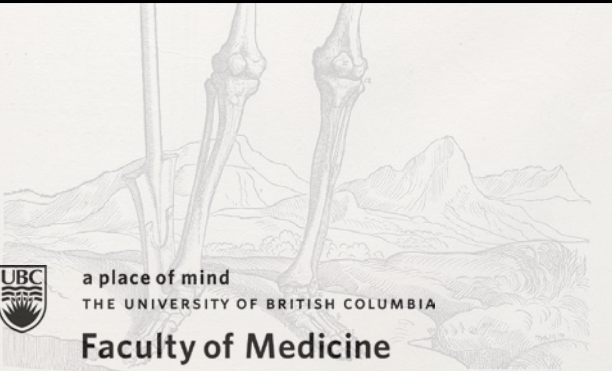
DE HVMANI CORPORIS FABRICA LIBER I. 169  
HVMANI COR-  
SIMVL COMPACTO.  
EX FACIE EXPRES.  
PORIS OSSIVM  
RPN ANTERIORI  
SID.



# LABORATORY 1



*THE BACK AND POSTERIOR SCAPULAR REGION*



a place of mind

THE UNIVERSITY OF BRITISH COLUMBIA

**Faculty of Medicine**

Southern Medical Program

# INDEX

## Accessory Nerve (CN XI)

Acromion Process

Erector Spinae (Group)

Inferior Angle

Infraspinatus

Lateral Angle

Lateral Border

Latissimus Dorsi

Levator Scapulae

Medial Border

Rhomboid Major

Rhomboid Minor

Scapular Spine

Superior Angle

Superior Border

Supraspinatus

Teres Minor

Trapezius



a place of mind

THE UNIVERSITY OF BRITISH COLUMBIA

**Faculty of Medicine**

Southern Medical Program

# Posterior Shoulder

Structures in View:

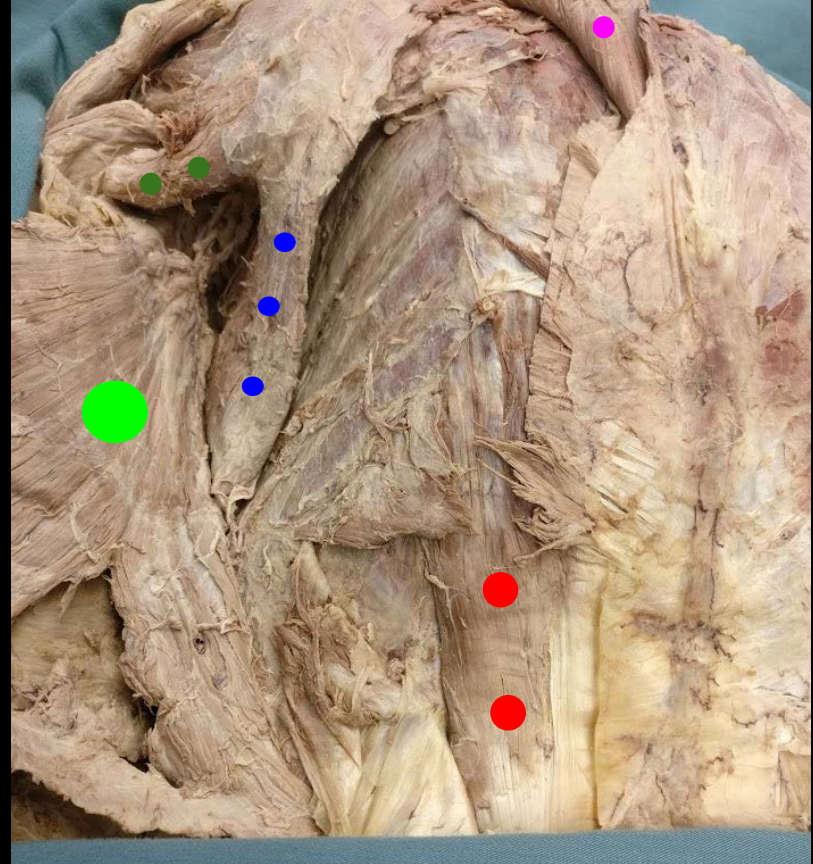
Erector Spinae (Group)

Serratus Anterior Muscle

Teres Major Muscle

Trapezius Muscle (Reflected)

Latissimus Dorsi (Reflected)



a place of mind  
THE UNIVERSITY OF BRITISH COLUMBIA

Faculty of Medicine

Southern Medical Program

# Posterior Shoulder

Structures in View:

Trapezius Muscle (Reflected)

Rhomboid Major Muscle

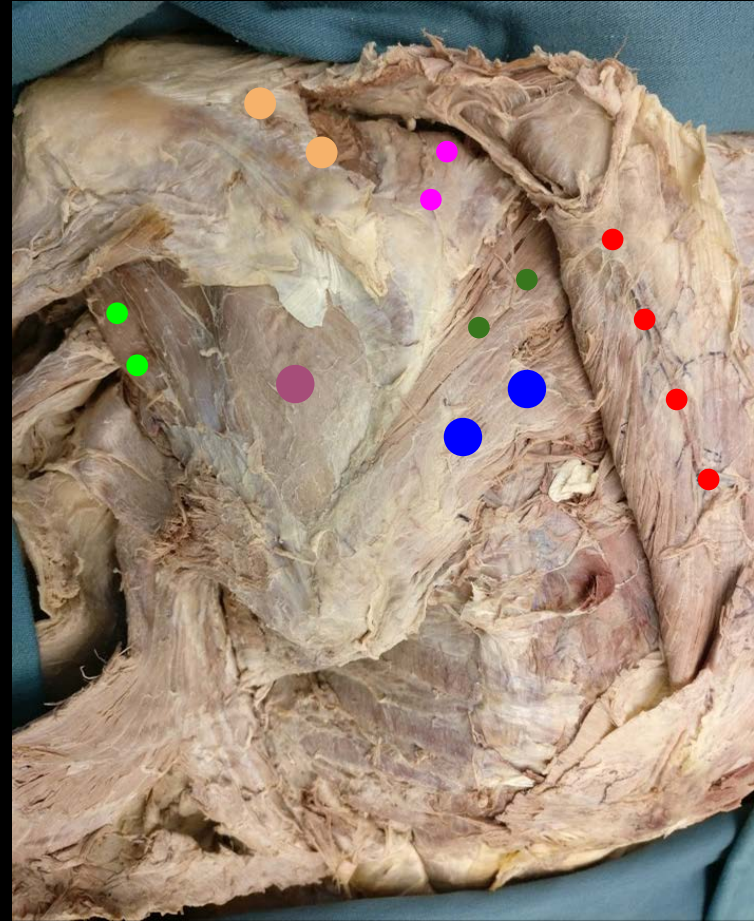
Rhomboid Minor Muscle

Infraspinatus Muscle

Supraspinatus Muscle

Levator Scapulae Muscle

Teres Minor Muscle



a place of mind  
THE UNIVERSITY OF BRITISH COLUMBIA

Faculty of Medicine

Southern Medical Program

# Osteology of Shoulder

Structures in View:

Humerus

Scapular Spine

Acromion Process

Superior Angle

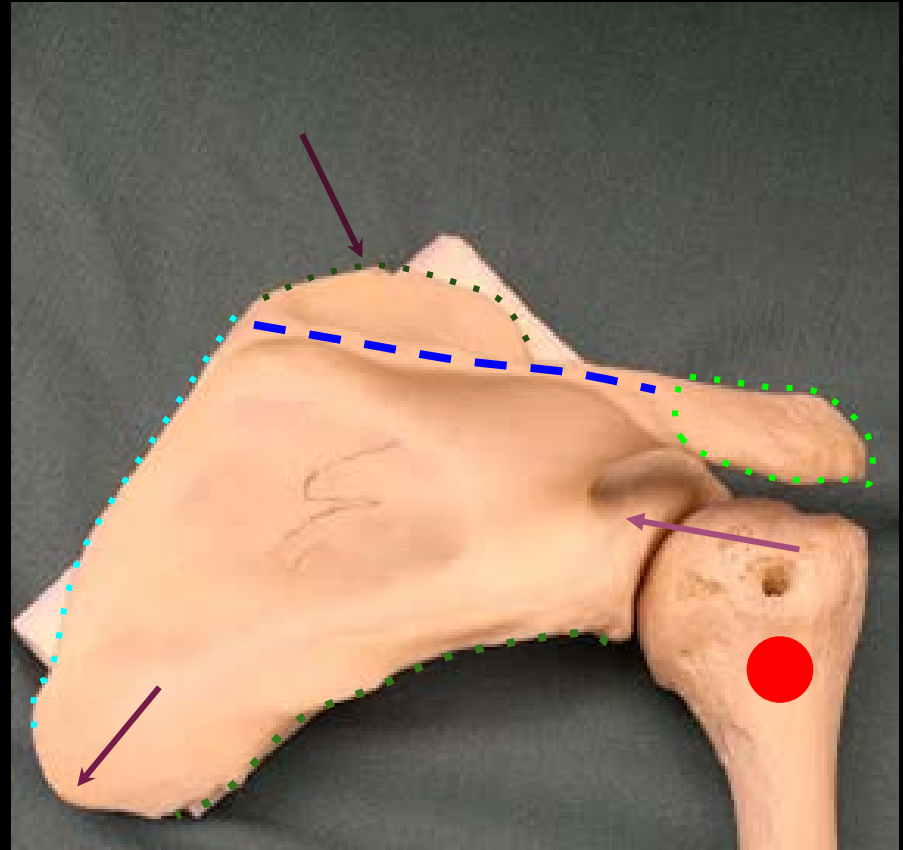
Inferior Angle

Lateral Angle

Superior Border

Medial Border

Lateral Border



a place of mind  
THE UNIVERSITY OF BRITISH COLUMBIA

Faculty of Medicine

Southern Medical Program

# References

- Photo source: <https://nyamcenterforhistory.org/tag/andreas-vesalius/>



a place of mind  
THE UNIVERSITY OF BRITISH COLUMBIA

**Faculty of Medicine**

Southern Medical Program



DE HVMANI CORPORIS FABRICA LIBER I. 169  
HVMANI COR-  
SIMVL COMPACTO.  
EX FACIE EXPRES.  
PORIS OSSIVM  
RPN ANTERIORI  
SID.



# MEDD 411 ANATOMY



*KURT MCBURNEY, ASSOCIATE TEACHING PROFESSOR - IMP*  
*NICHOLAS BYERS - SMP*  
*PETER BAUMEISTER - SMP*



a place of mind

THE UNIVERSITY OF BRITISH COLUMBIA

**Faculty of Medicine**

Southern Medical Program

# Proof of Permission for Cadaveric Photos



## Island Medical Program

The University of British Columbia  
Faculty of Medicine MD  
Undergraduate Program  
delivered in collaboration with  
the University of Victoria

Kurt McBumey  
Associate Teaching Professor  
Island Medical Program/Division of Medical Sciences  
University of British Columbia and University of Victoria  
[mcbumey@uvic.ca](mailto:mcbumey@uvic.ca)  
250-472-5336 (office)  
250-418-1542 (cell)

To Whom It May Concern:

During 6 week FLEX cycle of April/May 2018, Peter Baumeister and Nick Byers completed a dissection/learning resource project here at the Island Medical Program. They completed dissections of the lower limb corresponding to the upcoming fall gross anatomy laboratories.

As part of this project they took photographs of their dissections with the purpose of creating digital index cards which will help students in future labs with these lower limb dissections. Long before they began the project they asked for, and received, my permission to take and subsequently use the photos to create the digital index cards.

As a final check—as protection for themselves, their work and my responsibility for cadaveric donations—I will vet the final versions of the digital index cards to ensure there are no concerns regarding the photographs and the cadaveric material.

Thank you,

Kurt McBumey



a place of mind  
THE UNIVERSITY OF BRITISH COLUMBIA

Faculty of Medicine  
Southern Medical Program

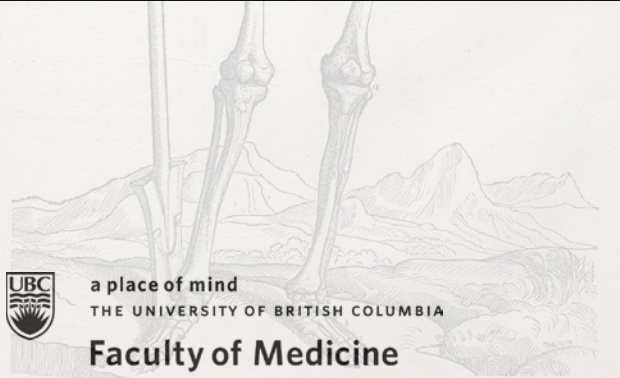
DE HVMANI CORPORIS FABRICA LIBER I. 163  
HVMANI COR-  
SIMVL COMPACTO.  
EX FACIE EXPRES.  
PORIS OSSIVM  
RPN. ANTERIORI  
SID.



# LABORATORY 2



## *INTRODUCTION TO THE NERVOUS SYSTEM*



a place of mind

THE UNIVERSITY OF BRITISH COLUMBIA

**Faculty of Medicine**

Southern Medical Program

# INDEX

An Intervertebral Foramen  
(Describe Borders and Contents)  
Anterior Roots  
Anterior Rami  
Arachnoid Mater  
Body of Vertebra  
Cauda Equina  
Epidural Space  
Filum Terminale

Inferior Articular Processes  
Inferior Vertebral Notches  
Laminae of Vertebra  
Pedicles of Vertebra  
Pia Mater  
Positions of Intervertebral Discs  
Posterior Rami  
Posterior Roots  
Spinal Dura Mater

Spinal Ganglion  
Spinal Nerve  
Spinous Process  
Subarachnoid Space  
Superior Articular Processes  
Superior Vertebral Notches  
Vertebral Foramen



a place of mind  
THE UNIVERSITY OF BRITISH COLUMBIA

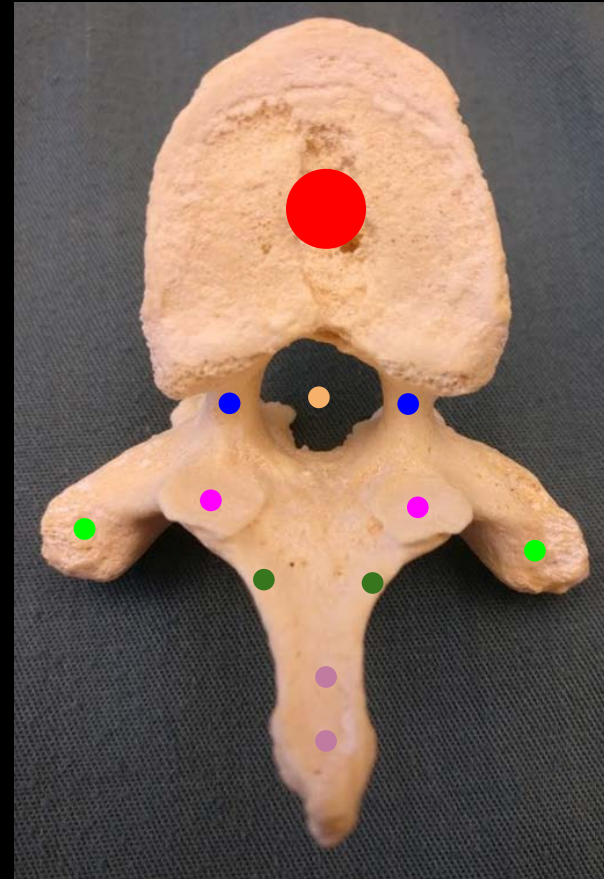
**Faculty of Medicine**

Southern Medical Program

# Thoracic Vertebrae - Inferior View

Structures in View:

- Body
- Pedicles
- Laminae
- Spinous Process
- Vertebral Foramen
- Inferior Articular Processes
- Transverse Processes



a place of mind  
THE UNIVERSITY OF BRITISH COLUMBIA

**Faculty of Medicine**

Southern Medical Program

# Thoracic Vertebrae - Posterolateral View

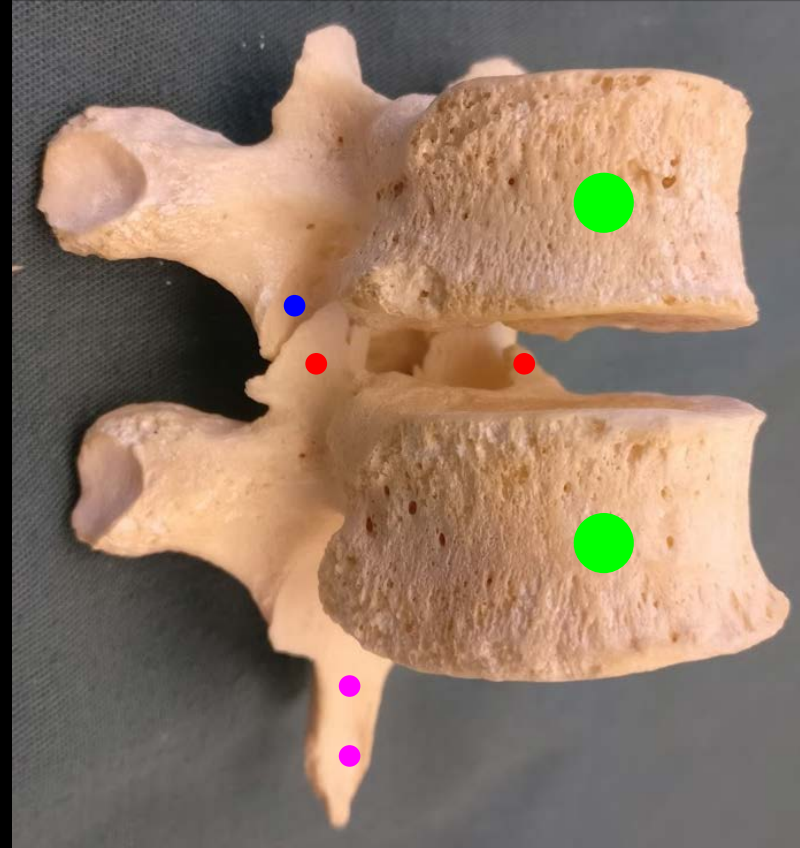
Structures in View:

Superior Articular Processes

Inferior Articular Process

Spinous Process

Body



a place of mind  
THE UNIVERSITY OF BRITISH COLUMBIA

Faculty of Medicine

Southern Medical Program

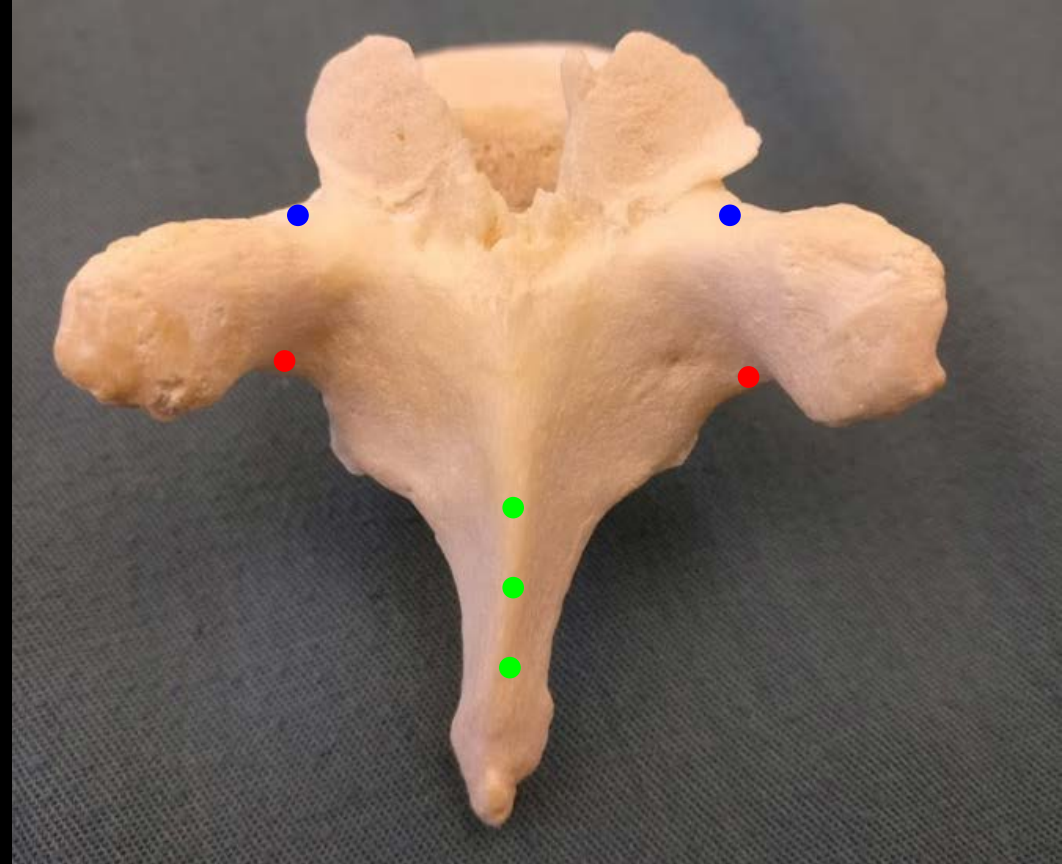
# Spinal Cord

Structures in View:

Inferior Vertebral Notch

Superior Vertebral Notch

Spinous Process



a place of mind  
THE UNIVERSITY OF BRITISH COLUMBIA

**Faculty of Medicine**

Southern Medical Program

# Spinal Cord

Structures in View:

Spinal Dura Mater

Cauda Equina

Filum Terminale

Spinal Pia Mater (Covering Spinal Cord)



a place of mind  
THE UNIVERSITY OF BRITISH COLUMBIA

Faculty of Medicine

Southern Medical Program



# Spinal Cord

Structures in View:

Nerve Root

Spinal Nerve



a place of mind  
THE UNIVERSITY OF BRITISH COLUMBIA

**Faculty of Medicine**

Southern Medical Program

# References

- University of Washington Department of Radiology
- Clinically Oriented Anatomy, 6th Edition
- Dr. Doroudi's Epic Notes
- Photo source: <https://nyamcenterforhistory.org/tag/andreas-vesalius/>



a place of mind  
THE UNIVERSITY OF BRITISH COLUMBIA

**Faculty of Medicine**

Southern Medical Program

DE HVMANI CORPORIS FABRICA LIBER I. 163  
HVMANI COR-  
SIMVL COMPACTO.  
EX FACIE EXPRES.  
PORIS OSSIVM  
RPN ANTERIORI  
SID.



# MEDD 411 ANATOMY



*KURT MCBURNEY, ASSOCIATE TEACHING PROFESSOR - IMP*  
*NICHOLAS BYERS - SMP*  
*PETER BAUMEISTER - SMP*



a place of mind

THE UNIVERSITY OF BRITISH COLUMBIA

**Faculty of Medicine**

Southern Medical Program

# Proof of Permission for Cadaveric Photos



## Island Medical Program

The University of British Columbia  
Faculty of Medicine MD  
Undergraduate Program  
delivered in collaboration with  
the University of Victoria

Kurt McBumey  
Associate Teaching Professor  
Island Medical Program/Division of Medical Sciences  
University of British Columbia and University of Victoria  
[mcbumey@uvic.ca](mailto:mcbumey@uvic.ca)  
250-472-5336 (office)  
250-418-1542 (cell)

To Whom It May Concern:

During 6 week FLEX cycle of April/May 2018, Peter Baumeister and Nick Byers completed a dissection/learning resource project here at the Island Medical Program. They completed dissections of the lower limb corresponding to the upcoming fall gross anatomy laboratories.

As part of this project they took photographs of their dissections with the purpose of creating digital index cards which will help students in future labs with these lower limb dissections. Long before they began the project they asked for, and received, my permission to take and subsequently use the photos to create the digital index cards.

As a final check—as protection for themselves, their work and my responsibility for cadaveric donations—I will vet the final versions of the digital index cards to ensure there are no concerns regarding the photographs and the cadaveric material.

Thank you,

Kurt McBumey



a place of mind  
THE UNIVERSITY OF BRITISH COLUMBIA

Faculty of Medicine  
Southern Medical Program

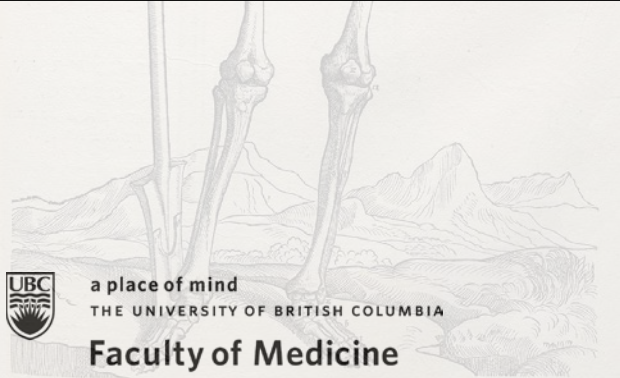
DE HVMANI CORPORA FABRICA LIBER I. 169  
HVMANI COR-  
SIMVL COMPACTO.  
EX FACIE EXPRES.  
PORIS OSSIVM  
RPN ANTERIORI  
SID.



# LABORATORY 3



## *PECTORAL REGION*



a place of mind

THE UNIVERSITY OF BRITISH COLUMBIA

**Faculty of Medicine**

Southern Medical Program

# INDEX

Areola

Nipple

Pectoralis Major Muscle

Pectoralis Minor Muscle

Serratus Anterior Muscle

Subclavius Muscle

The Breast



a place of mind

THE UNIVERSITY OF BRITISH COLUMBIA

**Faculty of Medicine**

Southern Medical Program

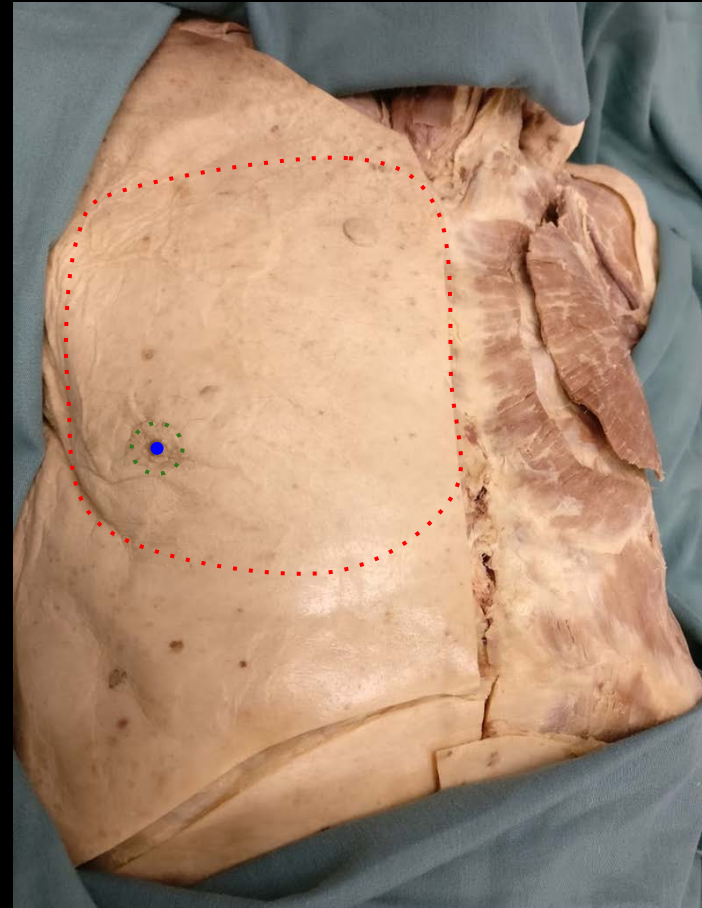
# The Chest

Structures in View:

The Breast

Nipple

Areola



a place of mind  
THE UNIVERSITY OF BRITISH COLUMBIA

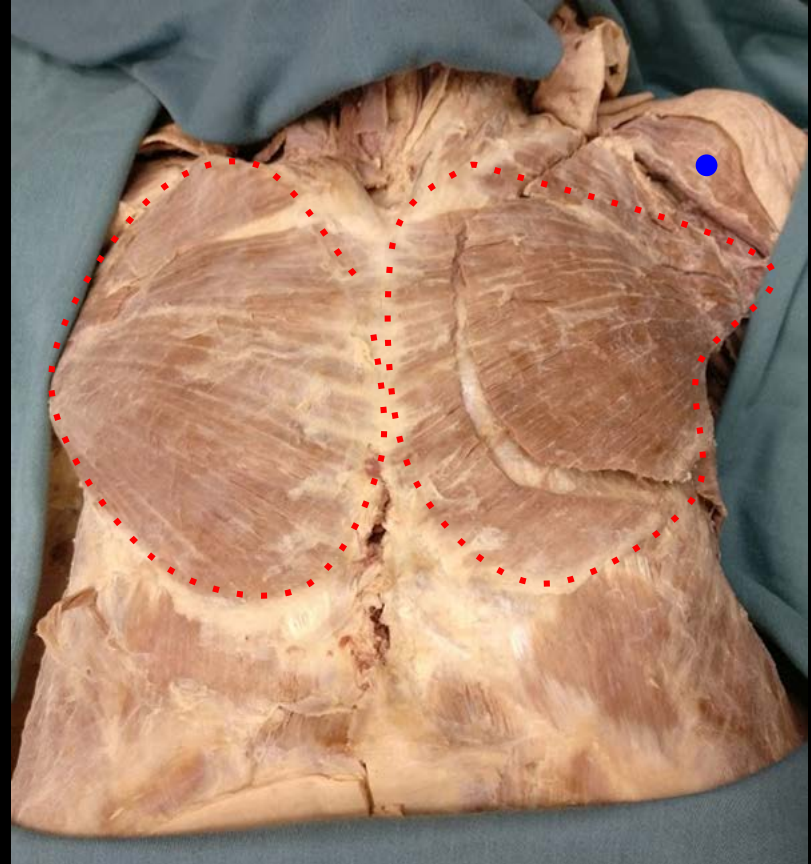
**Faculty of Medicine**

Southern Medical Program

# The Chest

Structures in View:

Pectoralis Major  
Deltoid



a place of mind  
THE UNIVERSITY OF BRITISH COLUMBIA

Faculty of Medicine  
Southern Medical Program



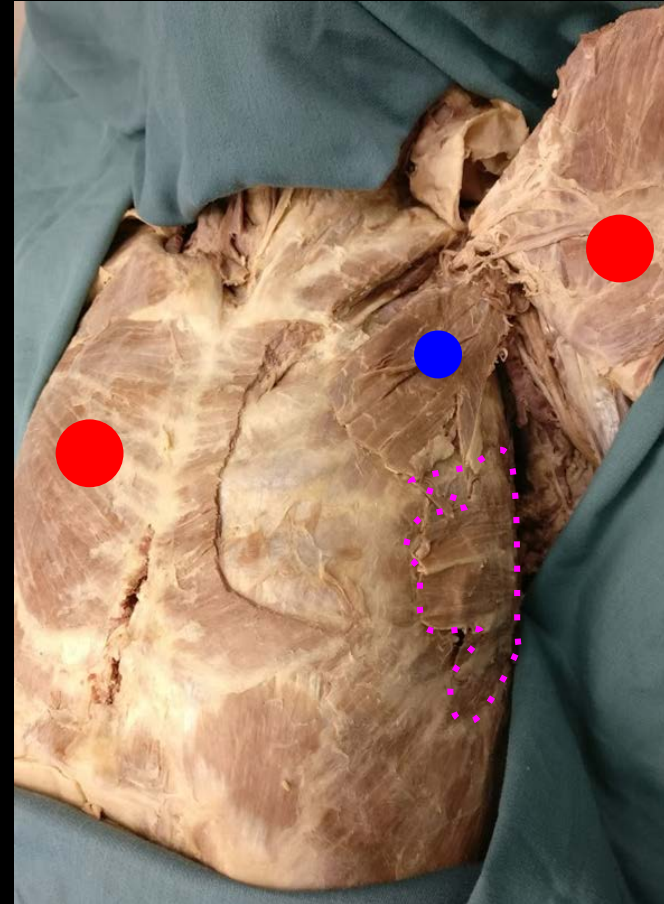
# The Chest

Structures in View:

Pectoralis Major

Pectoralis Minor

Serratus Anterior



a place of mind  
THE UNIVERSITY OF BRITISH COLUMBIA

Faculty of Medicine  
Southern Medical Program

# The Chest

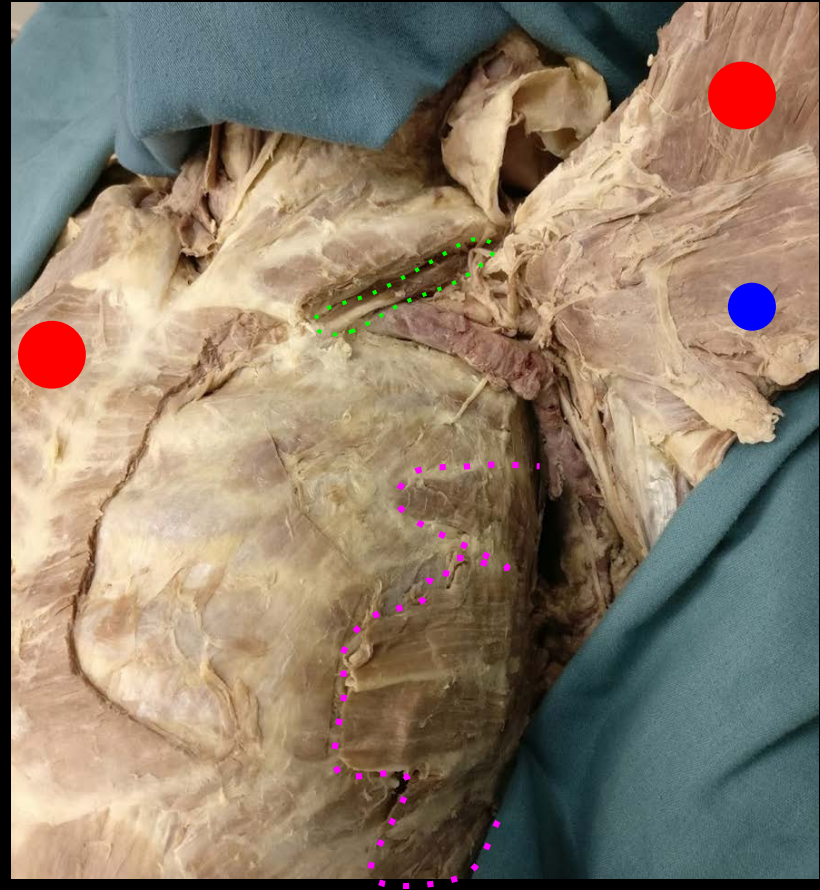
Structures in View:

Pectoralis Major

Pectoralis Minor

Serratus Anterior

Subclavius



a place of mind  
THE UNIVERSITY OF BRITISH COLUMBIA

Faculty of Medicine

Southern Medical Program

# References

- Photo source: <https://nyamcenterforhistory.org/tag/andreas-vesalius/>



a place of mind  
THE UNIVERSITY OF BRITISH COLUMBIA

**Faculty of Medicine**

Southern Medical Program

DE HVMANI CORPORIS FABRICA LIBER I. 169  
HVMANI COR-  
SIMVL COMPACTO-  
EX FACIE EXPRES-  
PORIS OSSIVM  
RPN ANTERIORI  
SID.



# MEDD 411 ANATOMY



*KURT MCBURNEY, ASSOCIATE TEACHING PROFESSOR - IMP*  
*NICHOLAS BYERS - SMP*  
*PETER BAUMEISTER - SMP*



a place of mind

THE UNIVERSITY OF BRITISH COLUMBIA

**Faculty of Medicine**

Southern Medical Program

# Proof of Permission for Cadaveric Photos



## Island Medical Program

The University of British Columbia  
Faculty of Medicine MD  
Undergraduate Program  
delivered in collaboration with  
the University of Victoria

Kurt McBumey  
Associate Teaching Professor  
Island Medical Program/Division of Medical Sciences  
University of British Columbia and University of Victoria  
[mcbumey@uvic.ca](mailto:mcbumey@uvic.ca)  
250-472-5336 (office)  
250-418-1542 (cell)

To Whom It May Concern:

During 6 week FLEX cycle of April/May 2018, Peter Baumeister and Nick Byers completed a dissection/learning resource project here at the Island Medical Program. They completed dissections of the lower limb corresponding to the upcoming fall gross anatomy laboratories.

As part of this project they took photographs of their dissections with the purpose of creating digital index cards which will help students in future labs with these lower limb dissections. Long before they began the project they asked for, and received, my permission to take and subsequently use the photos to create the digital index cards.

As a final check—as protection for themselves, their work and my responsibility for cadaveric donations—I will vet the final versions of the digital index cards to ensure there are no concerns regarding the photographs and the cadaveric material.

Thank you,

Kurt McBumey



a place of mind  
THE UNIVERSITY OF BRITISH COLUMBIA

Faculty of Medicine  
Southern Medical Program

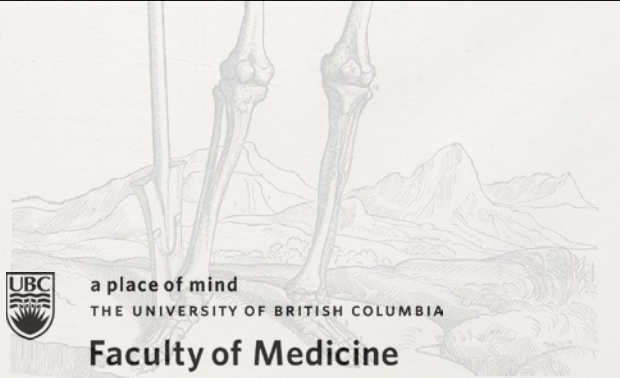
DE HVMANI CORPORIS FABRICA LIBER I. 163  
HVMANI COR-  
SIMVL COMPACTO.  
EX FACIE EXPRES.  
PORIS OSSIVM  
RPN. ANTERIORI  
SID.



# LABORATORY 4

~

## *THORACIC WALLS, PLEURAL CAVITIES, AND LUNGS*



a place of mind  
THE UNIVERSITY OF BRITISH COLUMBIA

**Faculty of Medicine**

Southern Medical Program

# INDEX

## OSTEOLOGY

Articular Facets of Thoracic  
Vertebra

Body of Sternum

Manubriosternal Joint (Sternal  
Angle of Louis)

Manubrium (Suprasternal Notch,  
Facets For Articulation of Clavicle  
and 1st & 2nd Ribs)

Xiphoid Process (Xiphisternum)

True Rib

Head of Rib

Neck of Rib

Tubercle of Rib

Angle of Rib

Shaft of Rib

Costal Groove of Rib

Anterior and Posterior

Intercostal Arteries and Veins

Costal Cartilages

Costodiaphragmatic Recess

Diaphragm

Hilum (Outlining the Root of The  
Lung)

Horizontal Fissure

Intercostal Muscles

Intercostal Nerve

Intercostal Spaces

Internal Thoracic (Mammary)

Arteries and Veins

Lingula

Lower Left Lobe

Lower Right Lobe

Oblique Fissure

Parietal Pleura

Phrenic Nerve

Transverse Fissure

Upper Left Lobe

Upper Right Lobe

Middle Right Lobe

Visceral Pleura



a place of mind  
THE UNIVERSITY OF BRITISH COLUMBIA

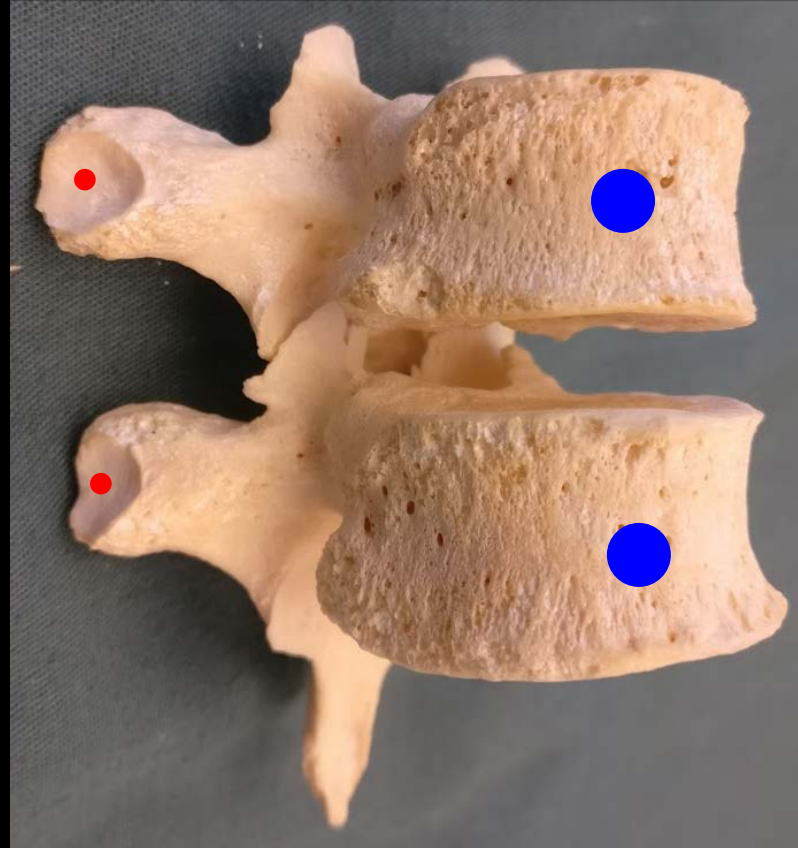
**Faculty of Medicine**

Southern Medical Program

# Osteology of Vertebrae

Structures in View:

Articular Facet of Rib  
Body of Vertebrae



a place of mind  
THE UNIVERSITY OF BRITISH COLUMBIA

Faculty of Medicine  
Southern Medical Program



# Osteology of True Rib

Structures in View:

Head

Neck

Angle

Costal Groove

Tubercle

Shaft



a place of mind  
THE UNIVERSITY OF BRITISH COLUMBIA

**Faculty of Medicine**

Southern Medical Program

# Osteology of Sternum

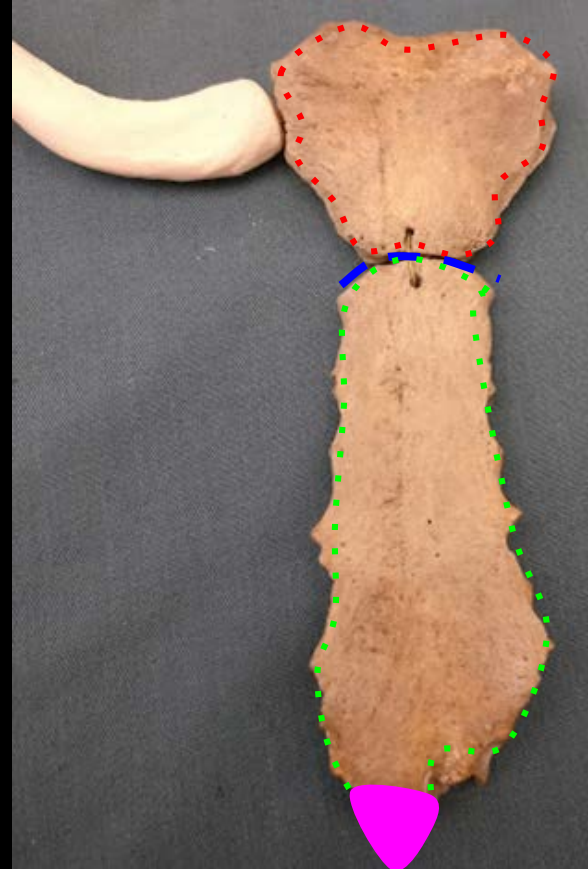
Structures in View:

Manubrium

Manubriosternal Joint

Body of Sternum

Xiphoid Process



a place of mind  
THE UNIVERSITY OF BRITISH COLUMBIA

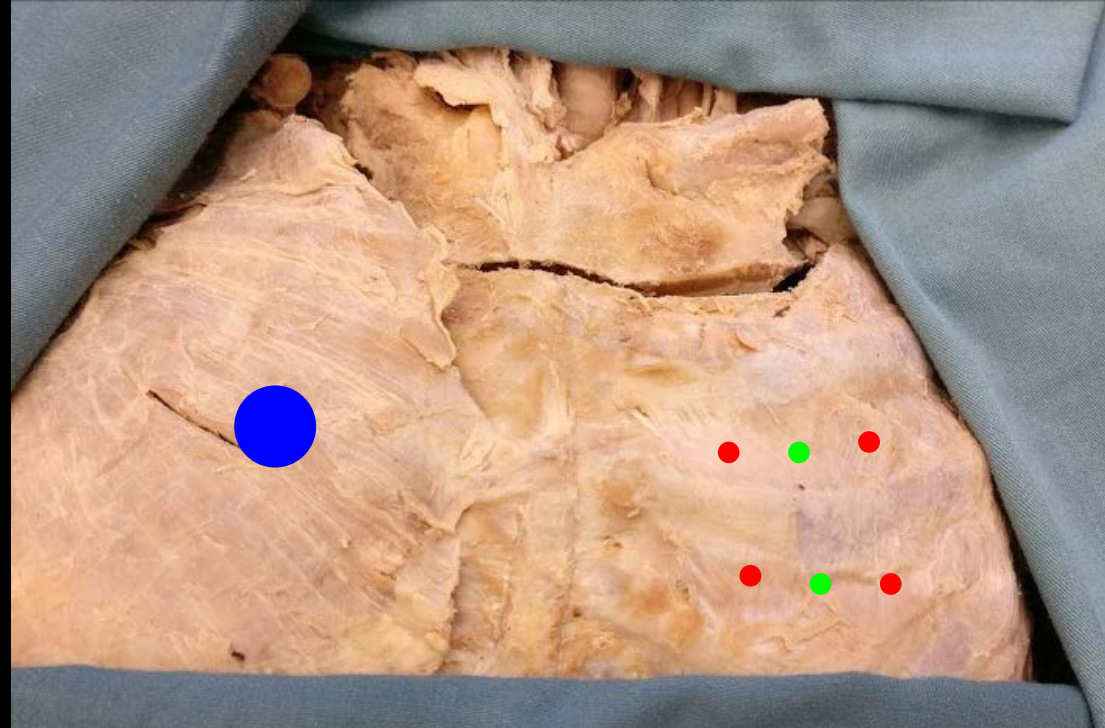
Faculty of Medicine

Southern Medical Program

# Anterior Chest Wall

Structures in View:

Intercostal Muscles  
Pectoralis Major  
Intercostal Spaces



a place of mind  
THE UNIVERSITY OF BRITISH COLUMBIA

**Faculty of Medicine**  
Southern Medical Program

# Posterior Chest Wall

Structures in View:

Intercostal Nerve  
Intercostal Muscles



a place of mind  
THE UNIVERSITY OF BRITISH COLUMBIA

Faculty of Medicine  
Southern Medical Program

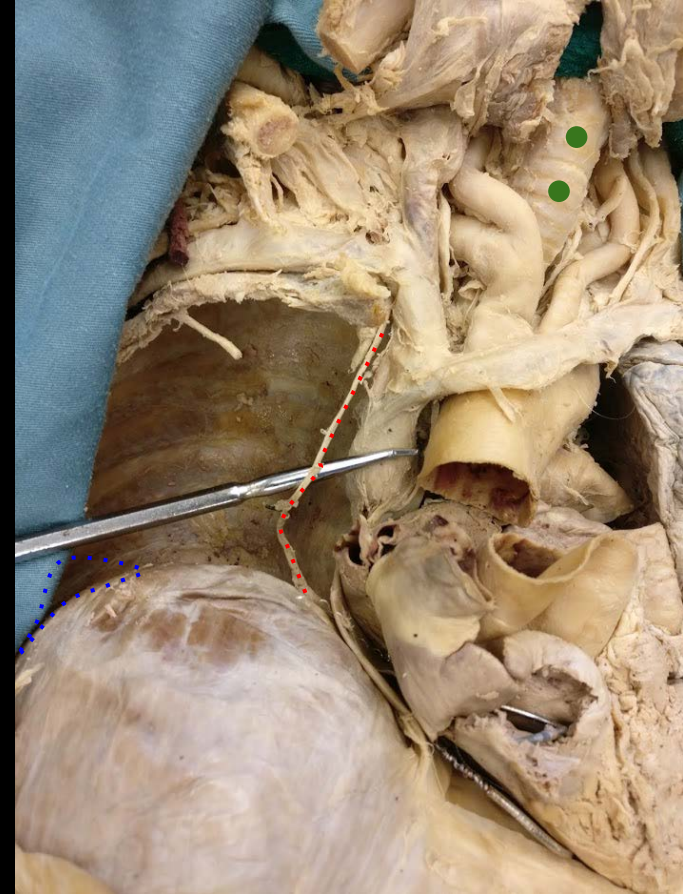
# Thoracic Cavity

Structures in View:

Phrenic Nerve

Costodiaphragmatic Recess

Trachea



a place of mind  
THE UNIVERSITY OF BRITISH COLUMBIA

**Faculty of Medicine**

Southern Medical Program

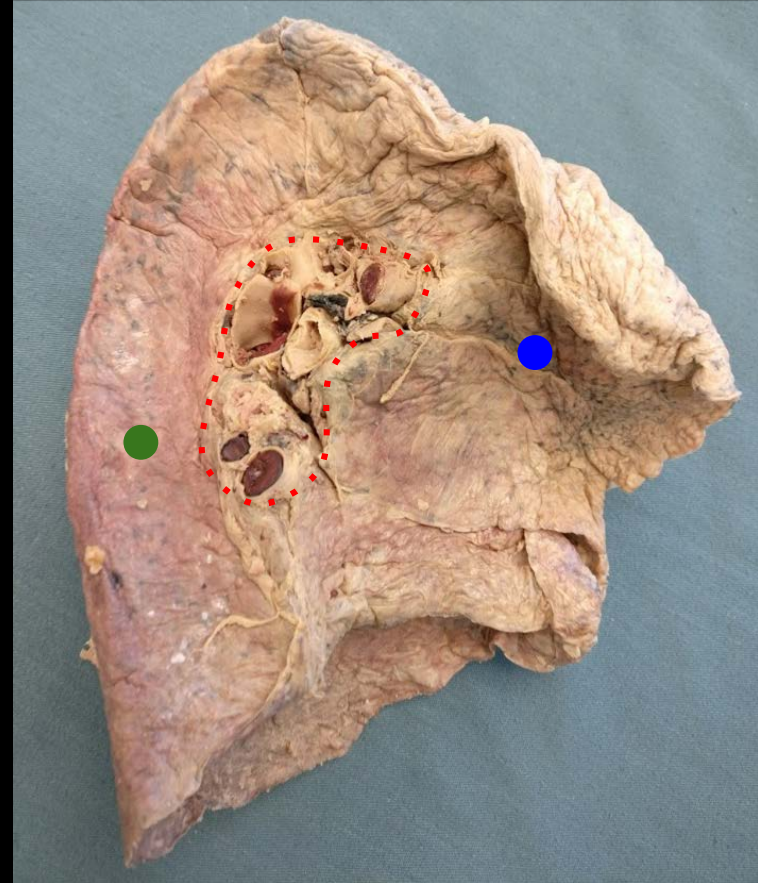
# Left Lung

Structures in View:

Hilum of Lung

Upper Lobe

Lower Lobe



a place of mind  
THE UNIVERSITY OF BRITISH COLUMBIA

**Faculty of Medicine**

Southern Medical Program

# Left Lung

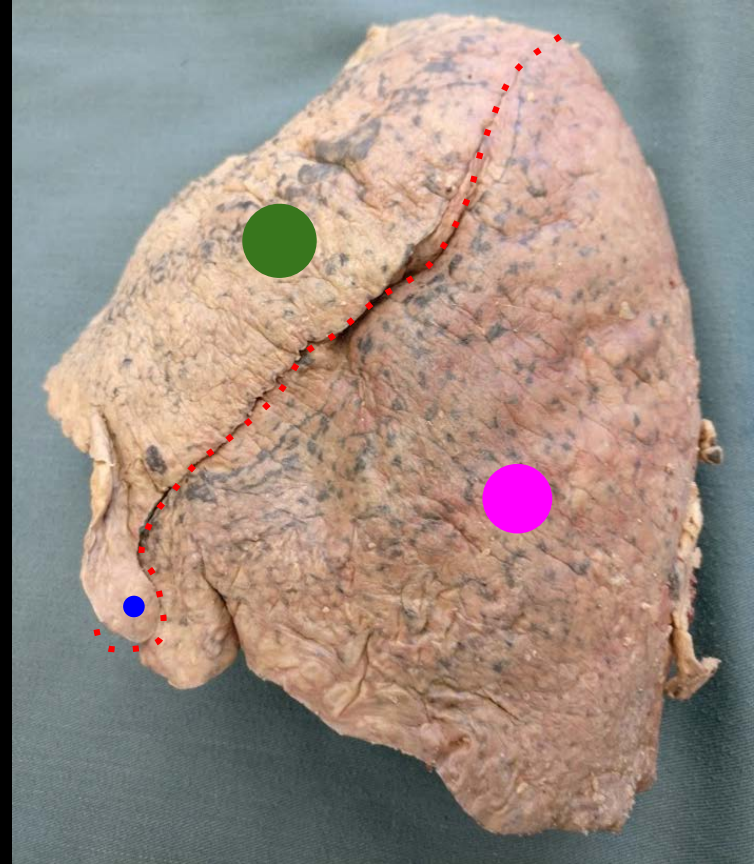
Structures in View:

Oblique Fissure

Lingula

Upper Lobe

Lower Lobe



a place of mind  
THE UNIVERSITY OF BRITISH COLUMBIA

**Faculty of Medicine**

Southern Medical Program

# Right Lung

Structures in View:

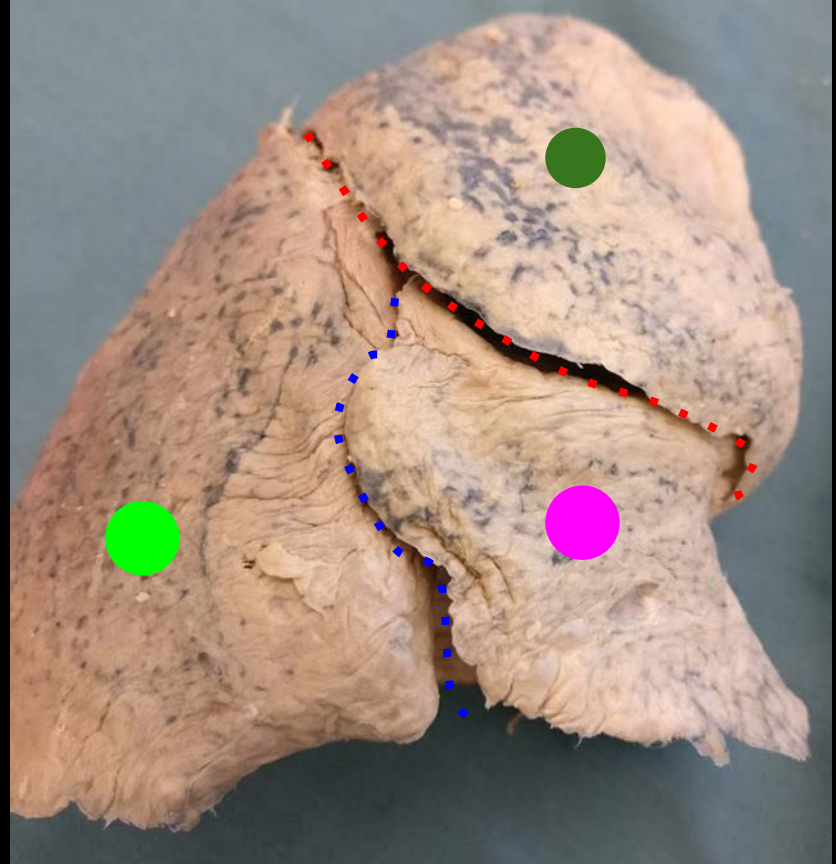
Horizontal Fissure

Oblique Fissure

Upper Lobe

Middle Lobe

Lower Lobe



a place of mind  
THE UNIVERSITY OF BRITISH COLUMBIA

**Faculty of Medicine**

Southern Medical Program



# References

- Photo source: <https://nyamcenterforhistory.org/tag/andreas-vesalius/>



a place of mind  
THE UNIVERSITY OF BRITISH COLUMBIA

**Faculty of Medicine**

Southern Medical Program

DE HVMANI CORPORIS FABRICA LIBER I. 163  
HVMANI COR-  
SIMVL COMPACTO.  
EX FACIE EXPRES.  
PORIS OSSIVM  
RPN ANTERIORI  
SID.



# MEDD 411 ANATOMY



*KURT MCBURNEY, ASSOCIATE TEACHING PROFESSOR - IMP*  
*NICHOLAS BYERS - SMP*  
*PETER BAUMEISTER - SMP*



a place of mind

THE UNIVERSITY OF BRITISH COLUMBIA

**Faculty of Medicine**

Southern Medical Program

# Proof of Permission for Cadaveric Photos



## Island Medical Program

The University of British Columbia  
Faculty of Medicine MD  
Undergraduate Program  
delivered in collaboration with  
the University of Victoria

Kurt McBumey  
Associate Teaching Professor  
Island Medical Program/Division of Medical Sciences  
University of British Columbia and University of Victoria  
[mcbumey@uvic.ca](mailto:mcbumey@uvic.ca)  
250-472-5336 (office)  
250-418-1542 (cell)

To Whom It May Concern:

During 6 week FLEX cycle of April/May 2018, Peter Baumeister and Nick Byers completed a dissection/learning resource project here at the Island Medical Program. They completed dissections of the lower limb corresponding to the upcoming fall gross anatomy laboratories.

As part of this project they took photographs of their dissections with the purpose of creating digital index cards which will help students in future labs with these lower limb dissections. Long before they began the project they asked for, and received, my permission to take and subsequently use the photos to create the digital index cards.

As a final check—as protection for themselves, their work and my responsibility for cadaveric donations—I will vet the final versions of the digital index cards to ensure there are no concerns regarding the photographs and the cadaveric material.

Thank you,

Kurt McBumey



a place of mind  
THE UNIVERSITY OF BRITISH COLUMBIA

Faculty of Medicine  
Southern Medical Program

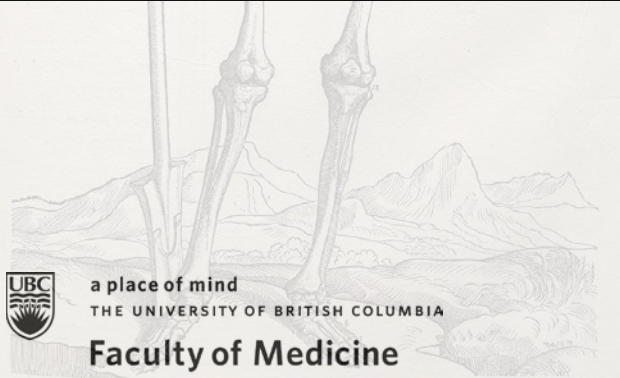
DE HVMANI CORPORIS FABRICA LIBER I. 163  
HVMANI COR-  
SIMVL COMPACTO.  
EX FACIE EXPRES.  
PORIS OSSIVM  
RPN ANTERIORI  
SID.



# LABORATORY 5



## MIDDLE MEDIASTINUM AND HEART



a place of mind  
THE UNIVERSITY OF BRITISH COLUMBIA

**Faculty of Medicine**

Southern Medical Program

# INDEX

Anterior Interventricular Groove  
Apex of Heart  
Atrioventricular Groove (Coronary Sulcus)  
Base of The Heart  
Chordae Tendinae  
Circumflex Branch of Left Coronary Coronary Sinus  
Cusps of The Aortic Valve  
Cusps of The Mitral Valve  
Cusps of The Tricuspid Valve  
**Fibrous Pericardium**  
Fossa Ovalis  
**Interatrial Septum From Left Atrial Side**  
Interatrial Septum From Right Atrial Side  
Interventricular Septum  
Left Anterior Descending  
Left Atrial Appendage (Rough- and Smooth-walled Portions)  
Left Atrium and Left Atrial Appendage (Auricle)  
Left Coronary Artery  
Left Ventricle  
Musculi Pectinati  
Opening For The Mitral Valve (The L. Atrio-ventricular Orifice)  
Opening For The Tricuspid Valve (The R. Atrio-ventricular Orifice)  
Opening of The Coronary Sinus  
Opening of The Inferior Vena Cava  
Opening of The Superior Vena Cava  
Openings For The Pulmonary Veins  
Ostia of Coronary Arteries  
Papillary Muscles  
**Parietal Serous Pericardium ('Serous Pericardium')**  
Posterior Descending Branch Or Right Coronary  
Posterior Interventricular Groove  
Pulmonary Valve With Its Cusps  
Right Atrium and Right Atrial Appendage (Auricle)  
Right Coronary Artery  
Right Ventricle  
Septomarginal Trabeculum (Moderator Band)  
Trabeculae Carnae  
Visceral Serous Pericardium (The 'Epicardium')



# The Heart - Anterior

Structures in View:

Aorta

Pulmonary Trunk

Right Ventricle

Left Ventricle

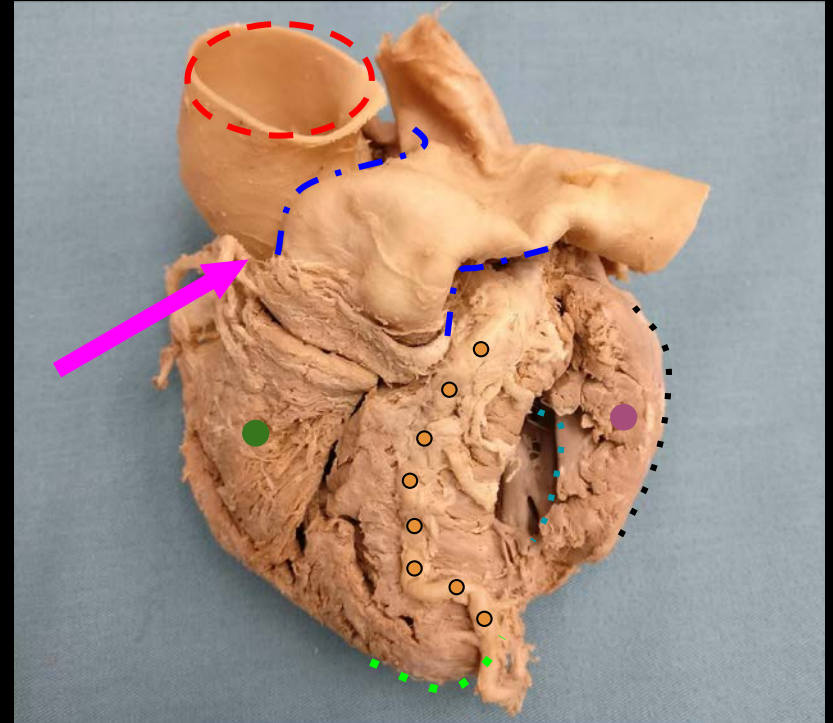
**Left Anterior Descending Artery  
(Within Interventricular Groove)**

Right Coronary Artery

Epicardial Surface

Endocardium

Apex of Heart



a place of mind  
THE UNIVERSITY OF BRITISH COLUMBIA

Faculty of Medicine

Southern Medical Program

# The Heart - Posterior

Structures in View:

Right Coronary Artery

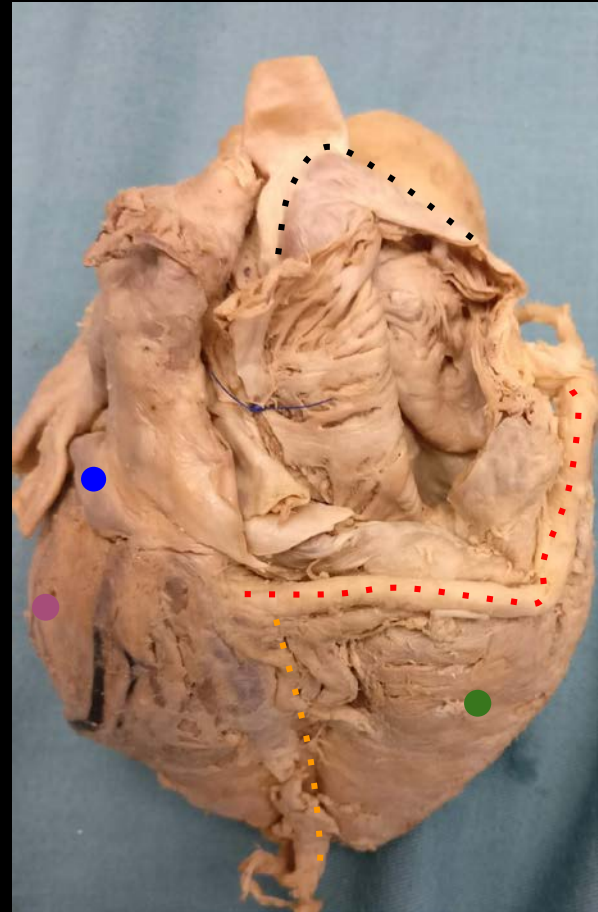
Coronary Sinus

Right Ventricle

Left Ventricle

Right Atrial Appendage (Reflected/Fixed Superiorly)

Posterior Descending Branch of Right Coronary Artery (Within Posterior Interventricular Groove)



a place of mind  
THE UNIVERSITY OF BRITISH COLUMBIA

Faculty of Medicine

Southern Medical Program

# The Heart

Structures in View:

Right Atrium (Opened)

Coronary Sinus

Left Pulmonary Veins

Right Coronary Artery

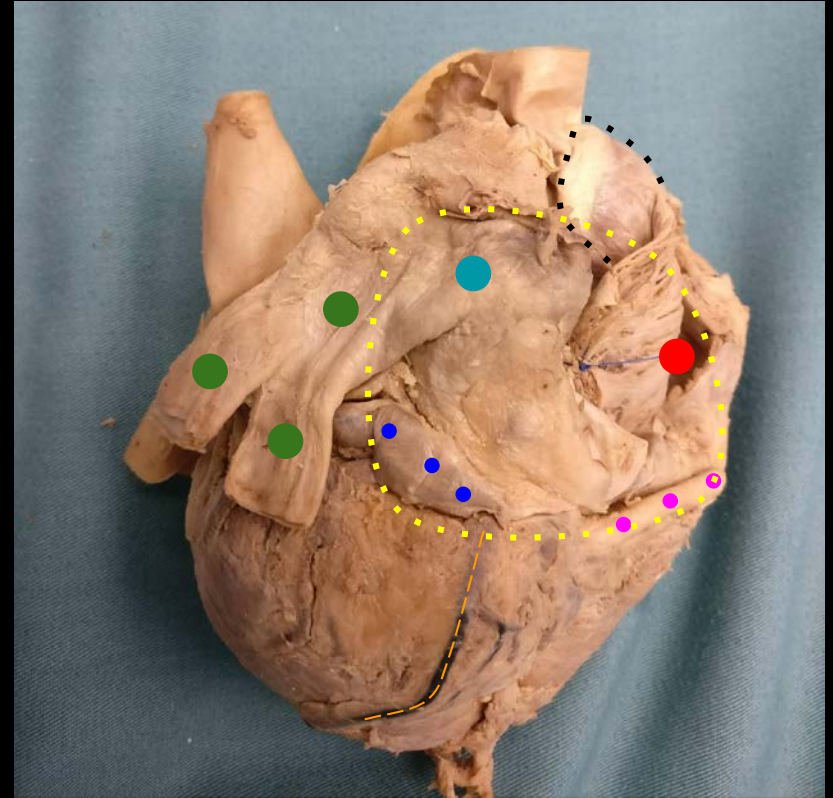
Right Atrial Appendage (Reflected/Fixed Superiorly)

Left Atrium

Middle Cardiac Vein

Epicardium (The Outer Surface of Heart)

Base of Heart



a place of mind  
THE UNIVERSITY OF BRITISH COLUMBIA

Faculty of Medicine

Southern Medical Program



# The Heart

Structures in View:

Right Atrium (Opened)

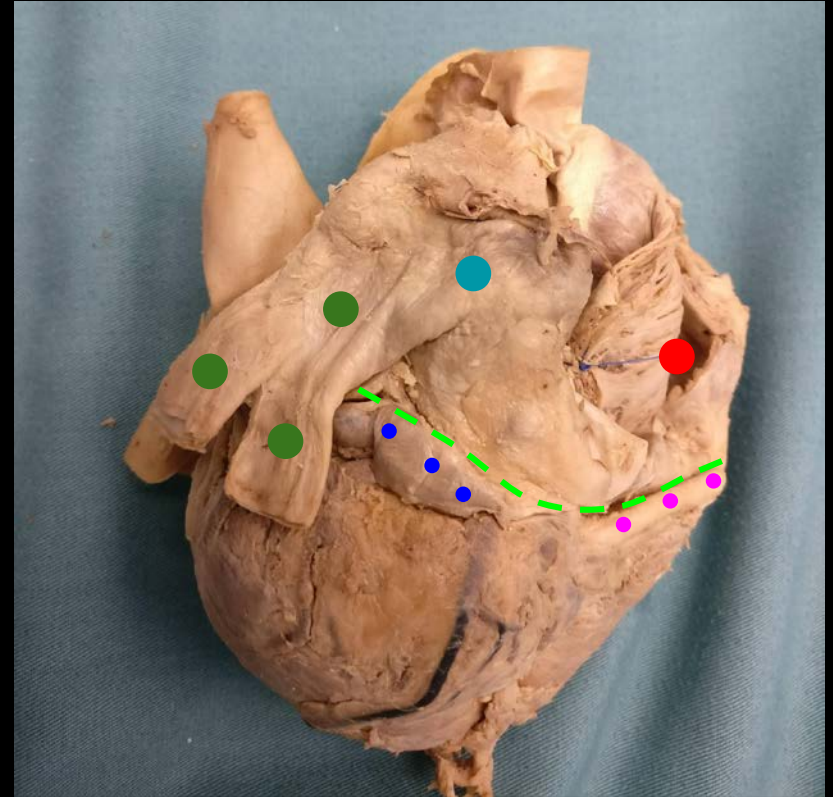
Coronary Sinus

Left Pulmonary Veins

Right Coronary Artery

Left Atrium

Atrioventricular Groove



a place of mind  
THE UNIVERSITY OF BRITISH COLUMBIA

Faculty of Medicine

Southern Medical Program

# The Heart

Structures in View:

Right Ventricle

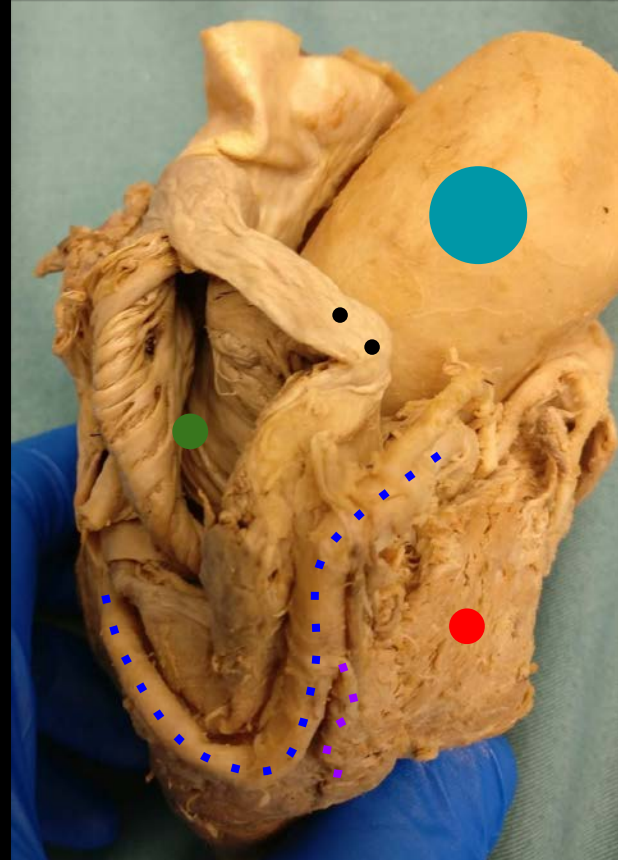
Right Coronary Artery

Right Atrium (Opened)

Right Atrial Appendage (Reflected/Fixed Superiorly)

Aorta

Marginal Branch of the Right Coronary Artery



a place of mind  
THE UNIVERSITY OF BRITISH COLUMBIA

Faculty of Medicine

Southern Medical Program

# The Heart

Structures in View:

Cristae Terminalis

Pectinate Muscles

Right Atrium (Opened)

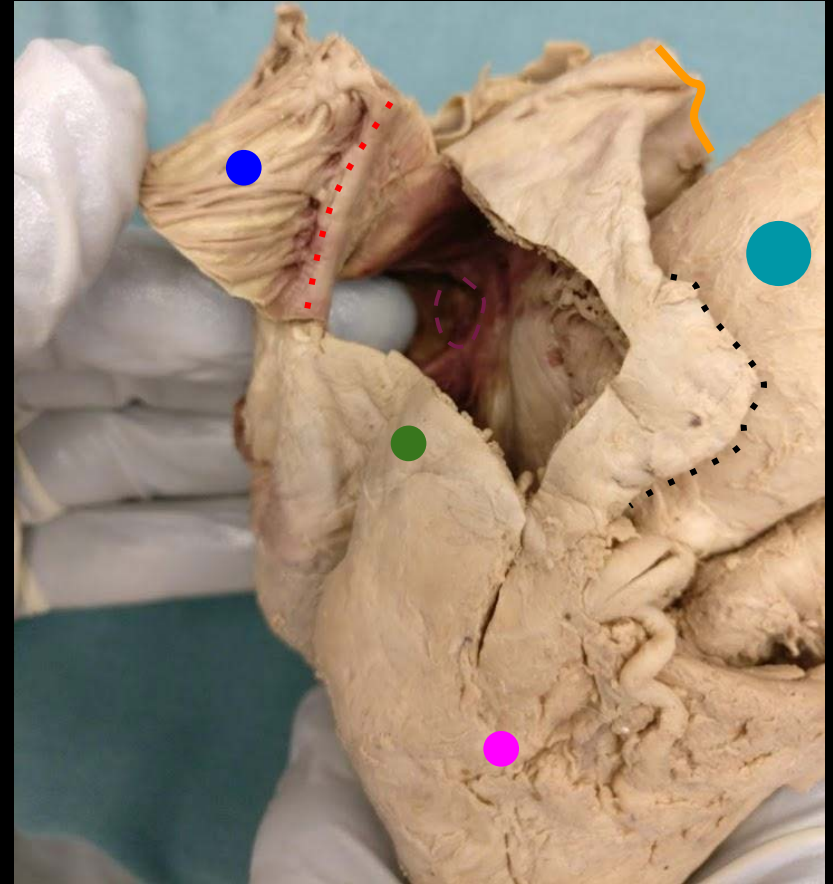
Right Ventricle

Right Atrial Appendage

Aorta

Superior Vena Cava

Fossa Ovalis (Finger Pointing Directly To It)



a place of mind  
THE UNIVERSITY OF BRITISH COLUMBIA

Faculty of Medicine

Southern Medical Program



# The Heart

Structures in View:

Fossa Ovalis (Valve of Foramen Ovale)

Right Coronary Artery

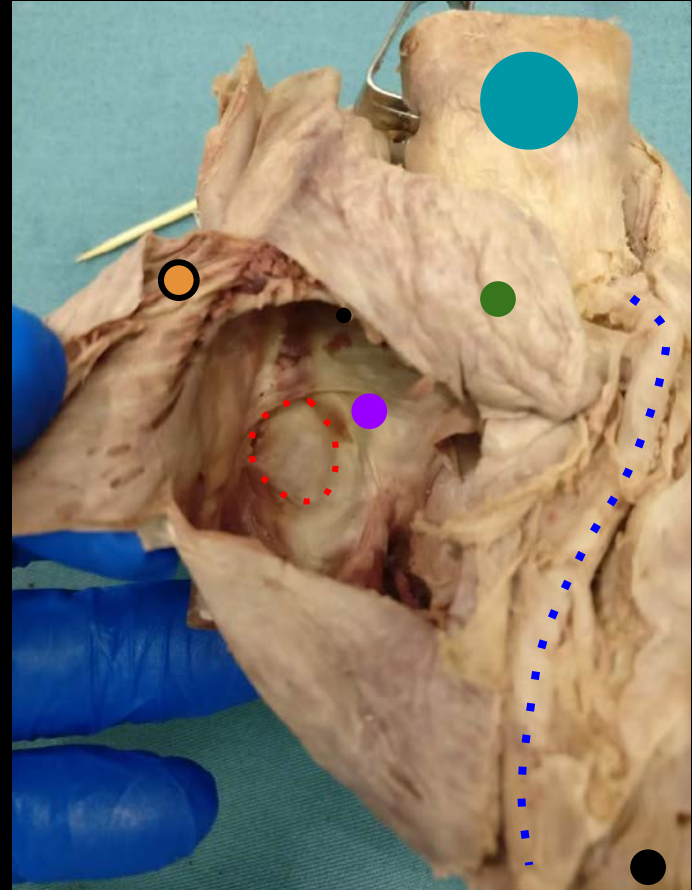
Interatrial Septum

Right Atrial Appendage

Right Ventricle

Aorta

**Pectinate Muscles**



a place of mind  
THE UNIVERSITY OF BRITISH COLUMBIA

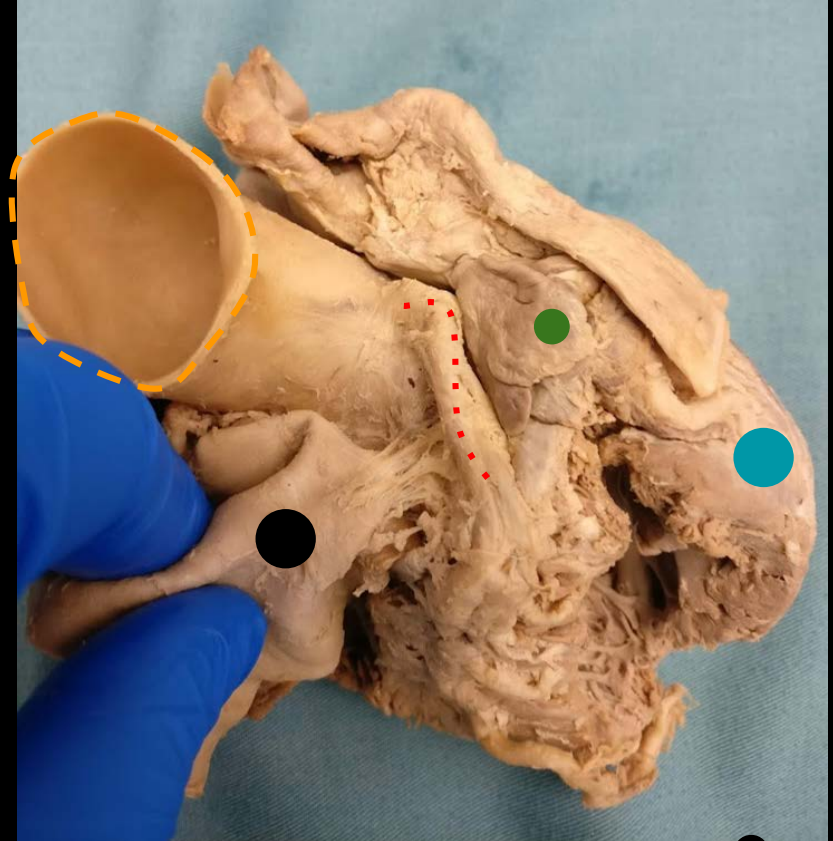
**Faculty of Medicine**

Southern Medical Program

# The Heart

Structures in View:

- Left Coronary Artery
- Right Coronary Artery
- Left Atrial Appendage
- Aorta
- Left Ventricle
- Pulmonary Artery



a place of mind  
THE UNIVERSITY OF BRITISH COLUMBIA

**Faculty of Medicine**

Southern Medical Program

# Right Atrium

Structures in View:

Opening of Inferior Vena Cava

Opening For Tricuspid Valve

Superior Vena Cava



a place of mind  
THE UNIVERSITY OF BRITISH COLUMBIA

**Faculty of Medicine**

Southern Medical Program

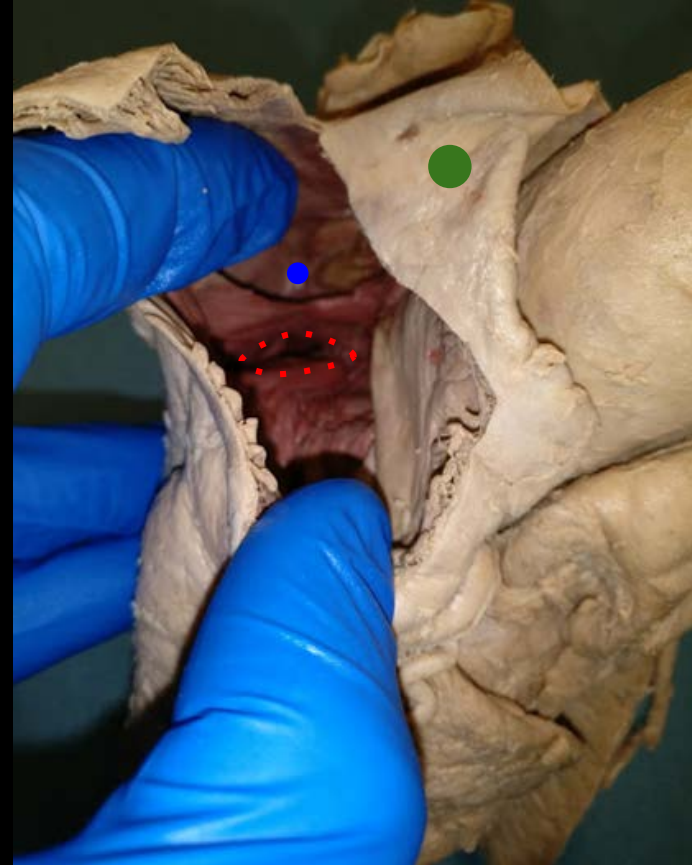
# Right Atrium

Structures in View:

Opening of Coronary Sinus

Opening of Inferior Vena Cava

Superior Vena Cava



a place of mind  
THE UNIVERSITY OF BRITISH COLUMBIA

**Faculty of Medicine**

Southern Medical Program



# Right Ventricle

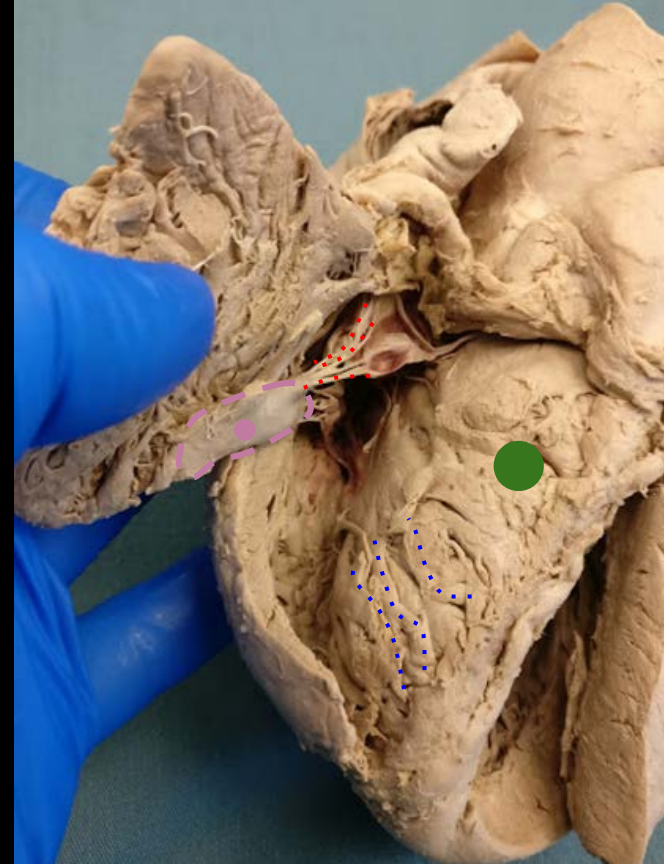
Structures in View:

Chordae Tendinae

Trabeculae Carneae

Interventricular Septum

Papillary Muscle



a place of mind  
THE UNIVERSITY OF BRITISH COLUMBIA

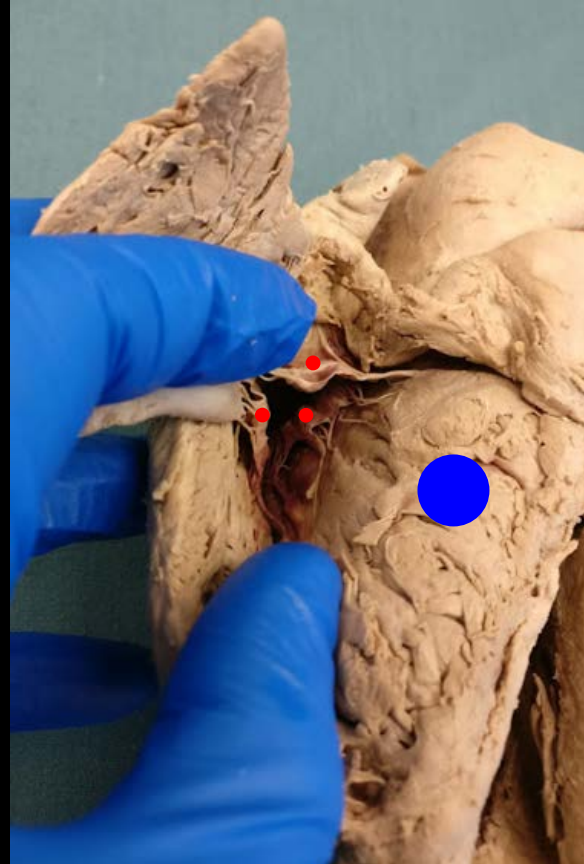
**Faculty of Medicine**

Southern Medical Program

# Right Ventricle

Structures in View:

Cusps of Tricuspid Valve  
Interventricular Septum



a place of mind  
THE UNIVERSITY OF BRITISH COLUMBIA

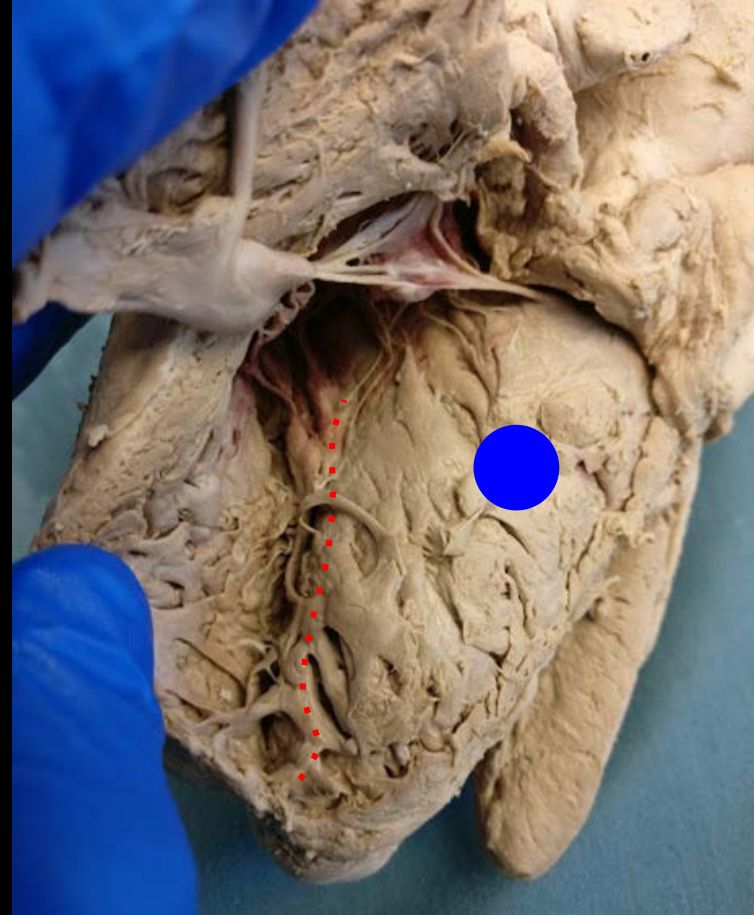
**Faculty of Medicine**  
Southern Medical Program

# Right Ventricle

Structures in View:

Septomarginal Trabeculum  
(Moderator Band)

Interventricular Septum



a place of mind  
THE UNIVERSITY OF BRITISH COLUMBIA

**Faculty of Medicine**

Southern Medical Program

# Superior View of Heart

Structures in View:

Cusps of Pulmonary Vein  
Aorta



a place of mind  
THE UNIVERSITY OF BRITISH COLUMBIA

**Faculty of Medicine**  
Southern Medical Program

# Left Ventricle

Structures in View:

Papillary Muscle

Chordae Tendinae

Trabeculae Carneae

Cusps of Mitral Valve



a place of mind  
THE UNIVERSITY OF BRITISH COLUMBIA

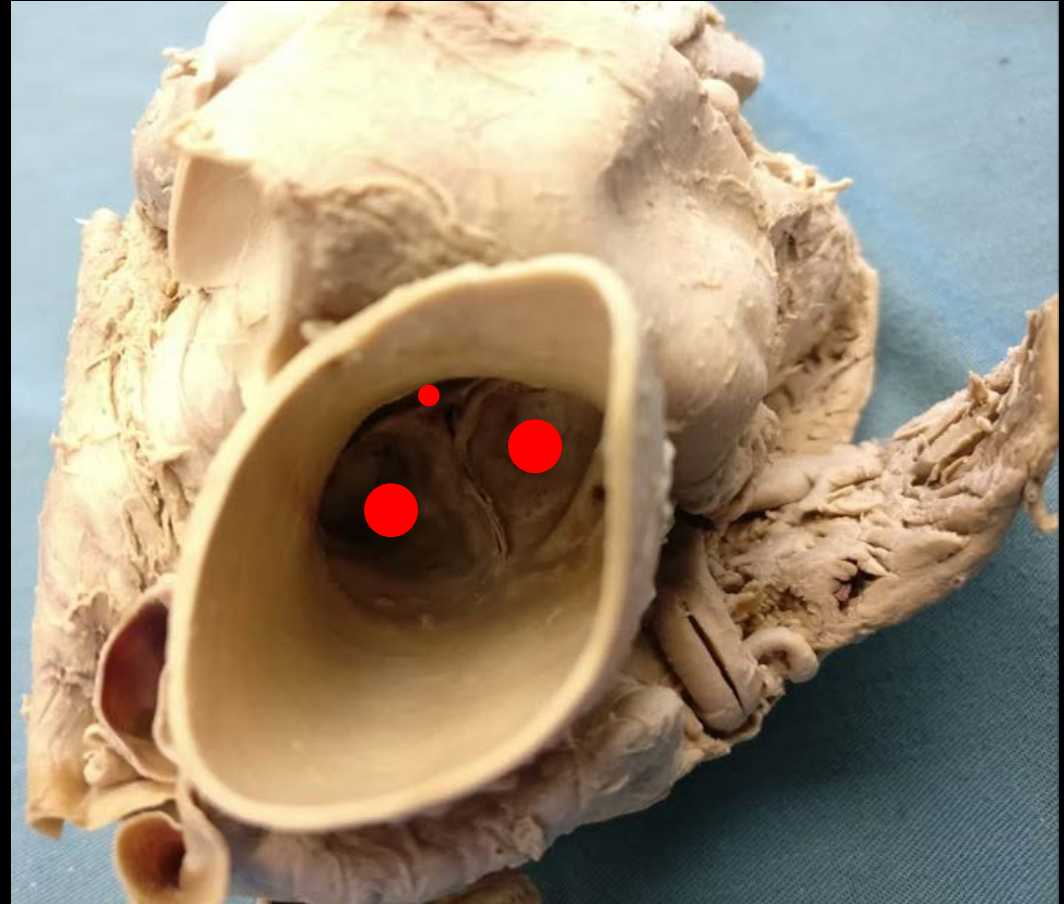
**Faculty of Medicine**

Southern Medical Program

# Aorta

Structures in View:

Cusps of Aorta



a place of mind  
THE UNIVERSITY OF BRITISH COLUMBIA

**Faculty of Medicine**  
Southern Medical Program

# References

- Photo source: <https://nyamcenterforhistory.org/tag/andreas-vesalius/>



a place of mind  
THE UNIVERSITY OF BRITISH COLUMBIA

**Faculty of Medicine**

Southern Medical Program

DE HVMANI CORPORIS FABRICA LIBER I. 163  
HVMANI COR-  
SIMVL COMPACTO-  
EX FACIE EXPRES-  
PORIS OSSIVM  
RPN ANTERIORI  
SID.



# MEDD 411 ANATOMY



*KURT MCBURNEY, ASSOCIATE TEACHING PROFESSOR - IMP*  
*NICHOLAS BYERS - SMP*  
*PETER BAUMEISTER - SMP*



a place of mind

THE UNIVERSITY OF BRITISH COLUMBIA

**Faculty of Medicine**

Southern Medical Program



# Proof of Permission for Cadaveric Photos



## Island Medical Program

The University of British Columbia  
Faculty of Medicine MD  
Undergraduate Program  
delivered in collaboration with  
the University of Victoria

Kurt McBumey  
Associate Teaching Professor  
Island Medical Program/Division of Medical Sciences  
University of British Columbia and University of Victoria  
[mcbumey@uvic.ca](mailto:mcbumey@uvic.ca)  
250-472-5336 (office)  
250-418-1542 (cell)

To Whom It May Concern:

During 6 week FLEX cycle of April/May 2018, Peter Baumeister and Nick Byers completed a dissection/learning resource project here at the Island Medical Program. They completed dissections of the lower limb corresponding to the upcoming fall gross anatomy laboratories.

As part of this project they took photographs of their dissections with the purpose of creating digital index cards which will help students in future labs with these lower limb dissections. Long before they began the project they asked for, and received, my permission to take and subsequently use the photos to create the digital index cards.

As a final check—as protection for themselves, their work and my responsibility for cadaveric donations—I will vet the final versions of the digital index cards to ensure there are no concerns regarding the photographs and the cadaveric material.

Thank you,

Kurt McBumey



a place of mind  
THE UNIVERSITY OF BRITISH COLUMBIA

Faculty of Medicine  
Southern Medical Program

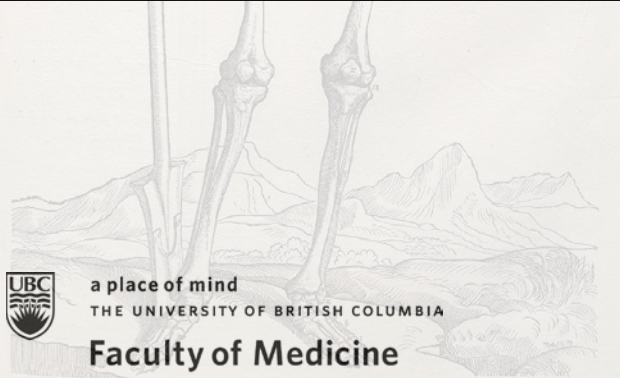
DE HVMANI CORPORIS FABRICA LIBER I. 163  
HVMANI COR-  
SIMVL COMPACTO.  
EX FACIE EXPRES.  
PORIS OSSIVM  
RPN ANTERIORI  
SID.



# LABORATORY 6



## *SUPERIOR AND POSTERIOR MEDIASTINUM*



a place of mind

THE UNIVERSITY OF BRITISH COLUMBIA

**Faculty of Medicine**

Southern Medical Program

# INDEX

Arch of the Azygos Vein  
Azygos and Hemiazygos Veins  
Brachiocephalic Arteries  
**Coronary Arteries**  
**Ductus Arteriosus/Ligamentum**  
**Arteriosum**  
**Inferior Vena Cava**  
Left Brachiocephalic Vein  
Left Common Carotid Artery  
Left Internal Jugular Vein

Left Main Bronchi  
Left Phrenic Nerve  
**Left Pulmonary Artery**  
Left Subclavian Artery  
Left Subclavian Vein  
Left Vagus Nerve  
Oesophagus  
**Posterior Intercostal Arteries**  
Recurrent Laryngeal Nerve(s)  
Right Brachiocephalic Vein

Right Internal Jugular Vein  
Right Main Bronchi  
Right Phrenic Nerve  
**Right Pulmonary Artery**  
Right Subclavian Vein  
**Right Vagus Nerve**  
Superior Vena Cava  
**Thoracic Duct**  
Trachea



a place of mind  
THE UNIVERSITY OF BRITISH COLUMBIA

**Faculty of Medicine**

Southern Medical Program

# Superior Mediastinum

Structures in View:

Carina

Right Main Bronchi

Left Main Bronchi

Aortic Arch

Superior Vena Cava

Oesophagus

Right Phrenic Nerve

Left Phrenic Nerve



a place of mind  
THE UNIVERSITY OF BRITISH COLUMBIA

Faculty of Medicine

Southern Medical Program

# Superior Mediastinum

Structures in View:

Aortic Arch

Brachiocephalic Trunk

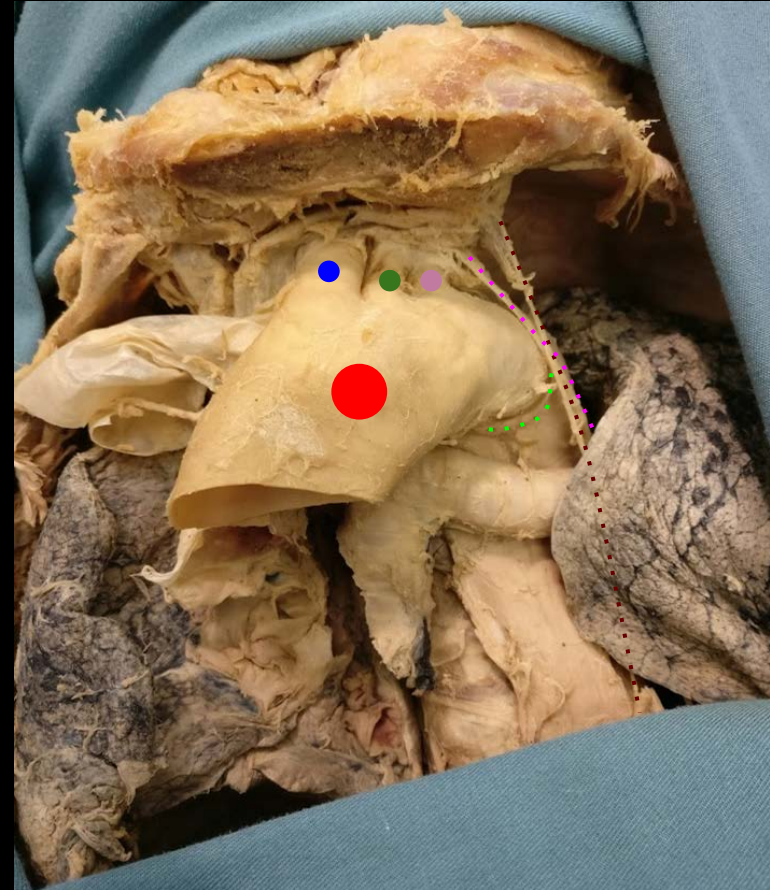
Left Common Carotid Artery

Left Subclavian Artery

Left Phrenic Nerve

Left Vagus Nerve

Left Recurrent Laryngeal Nerve



a place of mind  
THE UNIVERSITY OF BRITISH COLUMBIA

Faculty of Medicine

Southern Medical Program

# Superior Mediastinum

Structures in View:

Superior Vena Cava

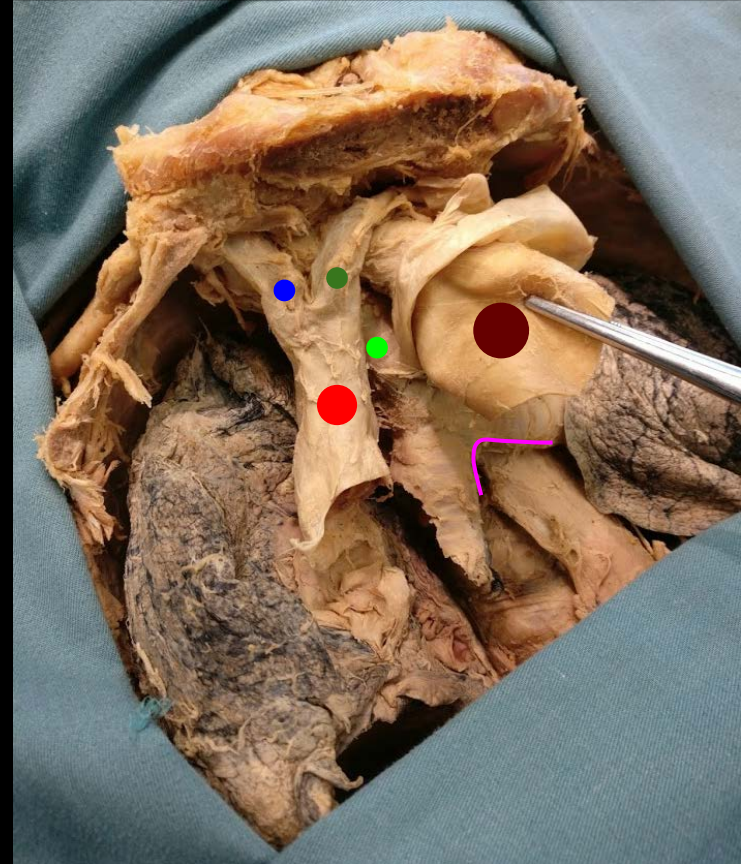
Right Brachiocephalic Vein

Left Brachiocephalic Vein

Aorta

Carina

Trachea



a place of mind  
THE UNIVERSITY OF BRITISH COLUMBIA

Faculty of Medicine

Southern Medical Program

# Posterior Mediastinum

Structures in View:

Right Mainstem Bronchi

Arch of Azygos

Azygos Vein

Superior Vena Cava

Carina



a place of mind  
THE UNIVERSITY OF BRITISH COLUMBIA

**Faculty of Medicine**

Southern Medical Program

# Superior Mediastinum

Structures in View:

Aortic Arch

Brachiocephalic Trunk

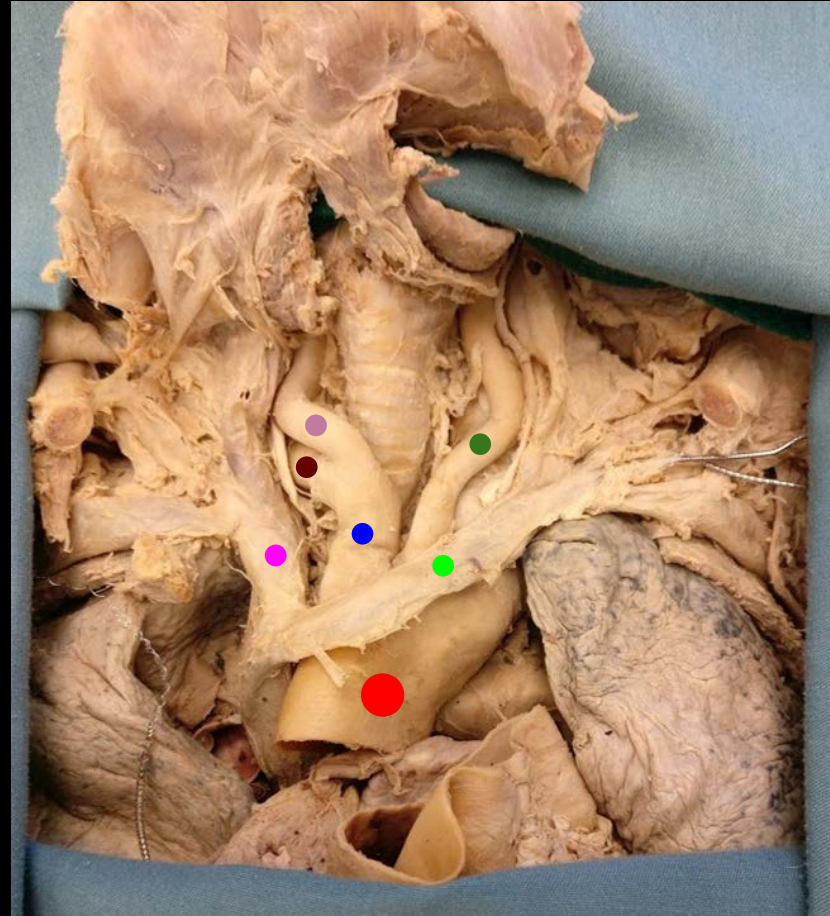
Left Common Carotid Artery

Right Common Carotid Artery

Right Subclavian Artery

Right Brachiocephalic Vein

Left Brachiocephalic Vein



a place of mind  
THE UNIVERSITY OF BRITISH COLUMBIA

Faculty of Medicine

Southern Medical Program



# Superior Mediastinum

Structures in View:

Trachea

Right Internal Jugular Vein

Left Internal Jugular Vein

Left Subclavian Vein

Left Vagus Nerve

Right Subclavian Vein

Clavicle(s)

Right Vagus Nerve



a place of mind  
THE UNIVERSITY OF BRITISH COLUMBIA

Faculty of Medicine

Southern Medical Program

# References

- Photo source: <https://nyamcenterforhistory.org/tag/andreas-vesalius/>



a place of mind  
THE UNIVERSITY OF BRITISH COLUMBIA

**Faculty of Medicine**

Southern Medical Program

DE HVMANI CORPORIS FABRICA LIBER I. 169  
HVMANI COR-  
SIMVL COMPACTO.  
EX FACIE EXPRES.  
PORIS OSSIVM  
RPN ANTERIORI  
SID.



# MEDD 411 ANATOMY



*KURT MCBURNEY, ASSOCIATE TEACHING PROFESSOR - IMP*  
*NICHOLAS BYERS - SMP*  
*PETER BAUMEISTER - SMP*



a place of mind

THE UNIVERSITY OF BRITISH COLUMBIA

**Faculty of Medicine**

Southern Medical Program

# Proof of Permission for Cadaveric Photos



## Island Medical Program

The University of British Columbia  
Faculty of Medicine MD  
Undergraduate Program  
delivered in collaboration with  
the University of Victoria

Kurt McBumey  
Associate Teaching Professor  
Island Medical Program/Division of Medical Sciences  
University of British Columbia and University of Victoria  
[mcbumey@uvic.ca](mailto:mcbumey@uvic.ca)  
250-472-5336 (office)  
250-418-1542 (cell)

To Whom It May Concern:

During 6 week FLEX cycle of April/May 2018, Peter Baumeister and Nick Byers completed a dissection/learning resource project here at the Island Medical Program. They completed dissections of the lower limb corresponding to the upcoming fall gross anatomy laboratories.

As part of this project they took photographs of their dissections with the purpose of creating digital index cards which will help students in future labs with these lower limb dissections. Long before they began the project they asked for, and received, my permission to take and subsequently use the photos to create the digital index cards.

As a final check—as protection for themselves, their work and my responsibility for cadaveric donations—I will vet the final versions of the digital index cards to ensure there are no concerns regarding the photographs and the cadaveric material.

Thank you,

Kurt McBumey



a place of mind  
THE UNIVERSITY OF BRITISH COLUMBIA

Faculty of Medicine  
Southern Medical Program

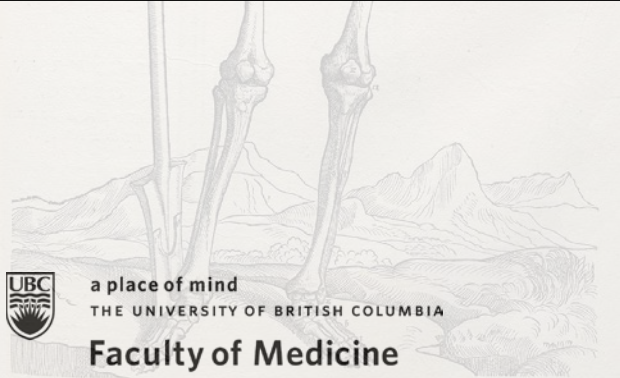
DE HVMANI CORPORIS FABRICA LIBER I. 163  
HVMANI COR-  
SIMVL COMPACTO.  
EX FACIE EXPRES.  
PORIS OSSIVM  
RPN ANTERIORI  
SID.



# LABORATORY 7



## *ANTERIOR ABDOMINAL WALL & INGUINAL REGION*



a place of mind

THE UNIVERSITY OF BRITISH COLUMBIA

**Faculty of Medicine**

Southern Medical Program

# INDEX

Conjoint Tendon  
External Oblique  
**Fascia Transversalis**  
**Inferior Epigastric Artery**  
Inguinal Canal  
Inguinal Ligament

Internal Oblique  
**Parietal Peritoneum**  
Position of Deep Inguinal Ring  
Rectus Abdominis  
Rectus Sheath  
Round Ligament of Uterus

Spermatic Cord  
Superficial Inguinal Ring  
Superior Epigastric Artery  
Transversus Abdominis  
**Visceral Peritoneum**



a place of mind  
THE UNIVERSITY OF BRITISH COLUMBIA

**Faculty of Medicine**

Southern Medical Program

# Anterior Superficial Abdominal Wall

Structures in View:

Rectus Sheath

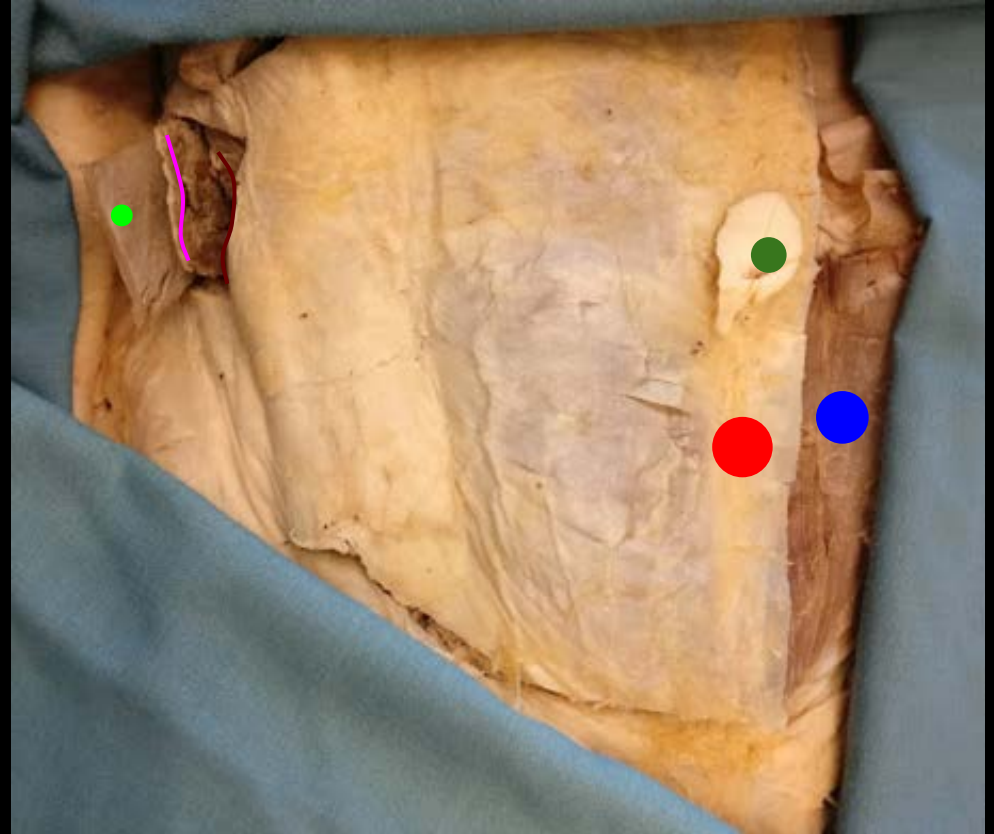
Rectus Abdominis

Umbilicus

Transverse Abdominis

Internal Oblique

External Oblique



a place of mind  
THE UNIVERSITY OF BRITISH COLUMBIA

Faculty of Medicine

Southern Medical Program

# Anterior Superficial Abdominal Wall

Structures in View:

Rectus Abdominis

Rectus Sheath

Inguinal Ligament

Spermatic Cord

Base of Penis

Superficial Inguinal Ring

Position of Deep Inguinal Ring

Conjoint Tendon (Position of)



a place of mind  
THE UNIVERSITY OF BRITISH COLUMBIA

Faculty of Medicine

Southern Medical Program



# Anterolateral Abdominal Wall

Structures in View:

External Oblique

Internal Oblique

Transversus Abdominis



a place of mind  
THE UNIVERSITY OF BRITISH COLUMBIA

**Faculty of Medicine**

Southern Medical Program

# Anterior Abdominal Wall

Structures in View:

Rectus Abdominis  
Superior Epigastric Vessels



a place of mind  
THE UNIVERSITY OF BRITISH COLUMBIA

Faculty of Medicine  
Southern Medical Program

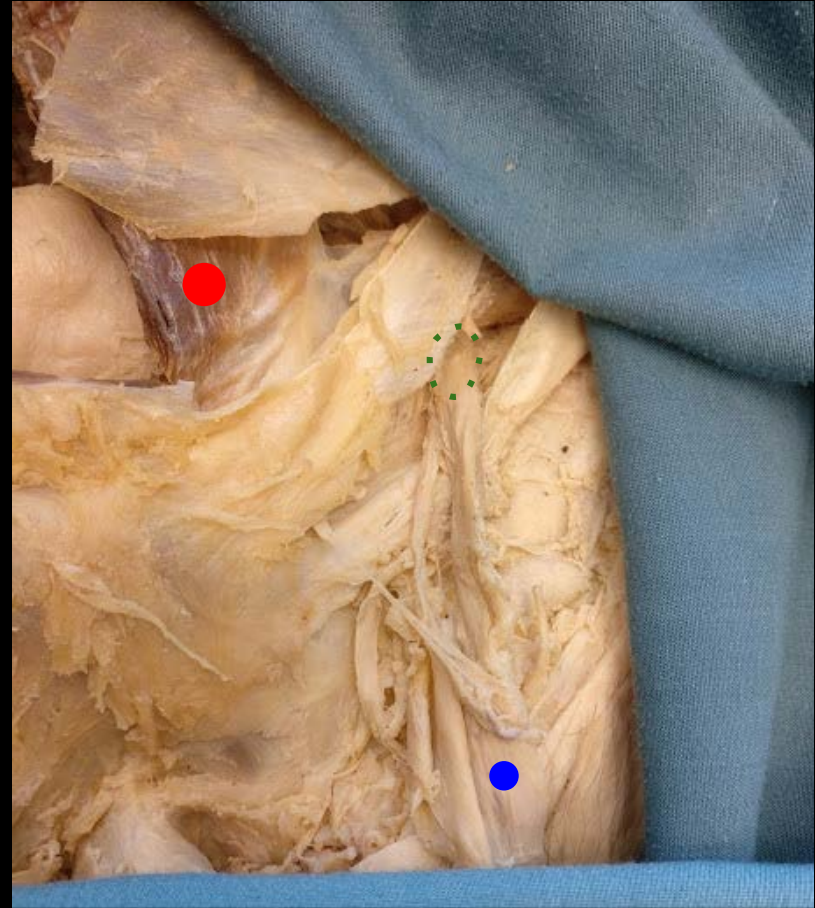
# Left Inguinal Region

Structures in View:

Rectus Abdominis

Spermatic Cord

Deep Inguinal Ring



a place of mind  
THE UNIVERSITY OF BRITISH COLUMBIA

**Faculty of Medicine**

Southern Medical Program

# Female Pelvis

Structures in View:

Ovary

Suspensory Ligament of Ovary

Ligament of Ovary

Round Ligament of Uterus

Broad Ligament (Comprised of 3 Parts)

Mesosalpinx (Covering Fallopian Tube)

Mesovarium (Covering Ovary)

Mesometrium (Covering Uterus)

Bladder



a place of mind  
THE UNIVERSITY OF BRITISH COLUMBIA

Faculty of Medicine

Southern Medical Program

# References

- Photo source: <https://nyamcenterforhistory.org/tag/andreas-vesalius/>



a place of mind  
THE UNIVERSITY OF BRITISH COLUMBIA

**Faculty of Medicine**

Southern Medical Program

DE HVMANI CORPORIS FABRICA LIBER I. 163  
HVMANI COR-  
SIMVL COMPACTO.  
EX FACIE EXPRES.  
PORIS OSSIVM  
RPN ANTERIORI  
SID.



# MEDD 411 ANATOMY



*KURT MCBURNEY, ASSOCIATE TEACHING PROFESSOR - IMP*  
*NICHOLAS BYERS - SMP*  
*PETER BAUMEISTER - SMP*



a place of mind

THE UNIVERSITY OF BRITISH COLUMBIA

**Faculty of Medicine**

Southern Medical Program

# Proof of Permission for Cadaveric Photos



## Island Medical Program

The University of British Columbia  
Faculty of Medicine MD  
Undergraduate Program  
delivered in collaboration with  
the University of Victoria

Kurt McBumey  
Associate Teaching Professor  
Island Medical Program/Division of Medical Sciences  
University of British Columbia and University of Victoria  
[mcbumey@uvic.ca](mailto:mcbumey@uvic.ca)  
250-472-5336 (office)  
250-418-1542 (cell)

To Whom It May Concern:

During 6 week FLEX cycle of April/May 2018, Peter Baumeister and Nick Byers completed a dissection/learning resource project here at the Island Medical Program. They completed dissections of the lower limb corresponding to the upcoming fall gross anatomy laboratories.

As part of this project they took photographs of their dissections with the purpose of creating digital index cards which will help students in future labs with these lower limb dissections. Long before they began the project they asked for, and received, my permission to take and subsequently use the photos to create the digital index cards.

As a final check—as protection for themselves, their work and my responsibility for cadaveric donations—I will vet the final versions of the digital index cards to ensure there are no concerns regarding the photographs and the cadaveric material.

Thank you,

Kurt McBumey



a place of mind  
THE UNIVERSITY OF BRITISH COLUMBIA

Faculty of Medicine  
Southern Medical Program

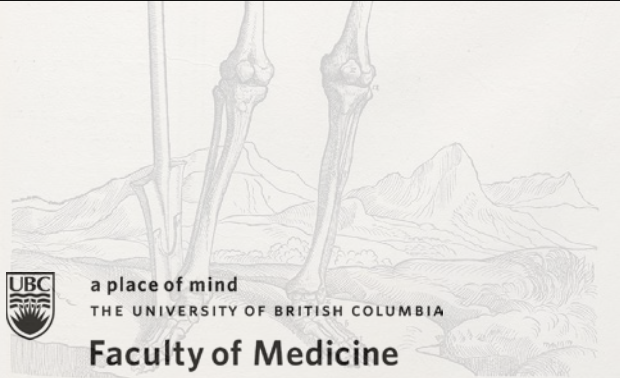
DE HVMANI CORPORIS FABRICA LIBER I. 169  
HVMANI COR-  
SIMVL COMPACTO.  
EX FACIE EXPRES.  
PORIS OSSIVM  
RPN ANTERIORI  
SID.



# LABORATORY 8



*FOREGUT ORGANS AND VESSELS*



a place of mind  
THE UNIVERSITY OF BRITISH COLUMBIA

**Faculty of Medicine**

Southern Medical Program



# INDEX

Abdominal Aorta  
Appendix  
Bile Duct (Common Bile Duct)  
Body of Stomach  
Cardia of Stomach  
Caudate Lobe of Liver  
**Celiac Trunk**  
Common Hepatic  
Common Hepatic Duct  
Cystic Duct  
Epiploic Foramen of Winslow  
(Gastroepiploic Foramen)  
Falciform Ligament  
First Part of Duodenum  
Fourth Part of Duodenum  
Fundus of Stomach

Gallbladder  
Greater and Lesser Curvatures  
of Stomach  
**Greater Omentum**  
**Greater Peritoneal Sac**  
Head of Pancreas  
**Hepatic Artery**  
Common Bile Duct  
Hepatic Portal Vein  
Hepatic Proper  
Hepatic Veins  
Hepatoduodenal Ligament  
Inferior Vena Cava  
**Left Gastric**  
**Left Hepatic**  
Left Lobe of Liver  
**Lesser Omentum**  
**Lesser Peritoneal Sac (Omental  
Bursa)**

Major Duodenal Papilla  
Neck Head of Pancreas  
Neck of Pancreas  
**Porta Hepatis**  
Pylorus of Stomach  
Quadrangle Lobe of Liver  
**Right and Left Hepatic Ducts**  
**Right Hepatic**  
Right Lobe of Liver  
Second Part of Duodenum  
**Sigmoid Mesocolon**  
Spleen  
**Splenic Artery**  
**Splenic Vein**  
Superior Mesenteric Vein  
**The Mesentery (of Small Intestine)**  
Third Part of Duodenum  
**Transverse Mesocolon**



# The Stomach

Structures in View:

Cardia

Fundus

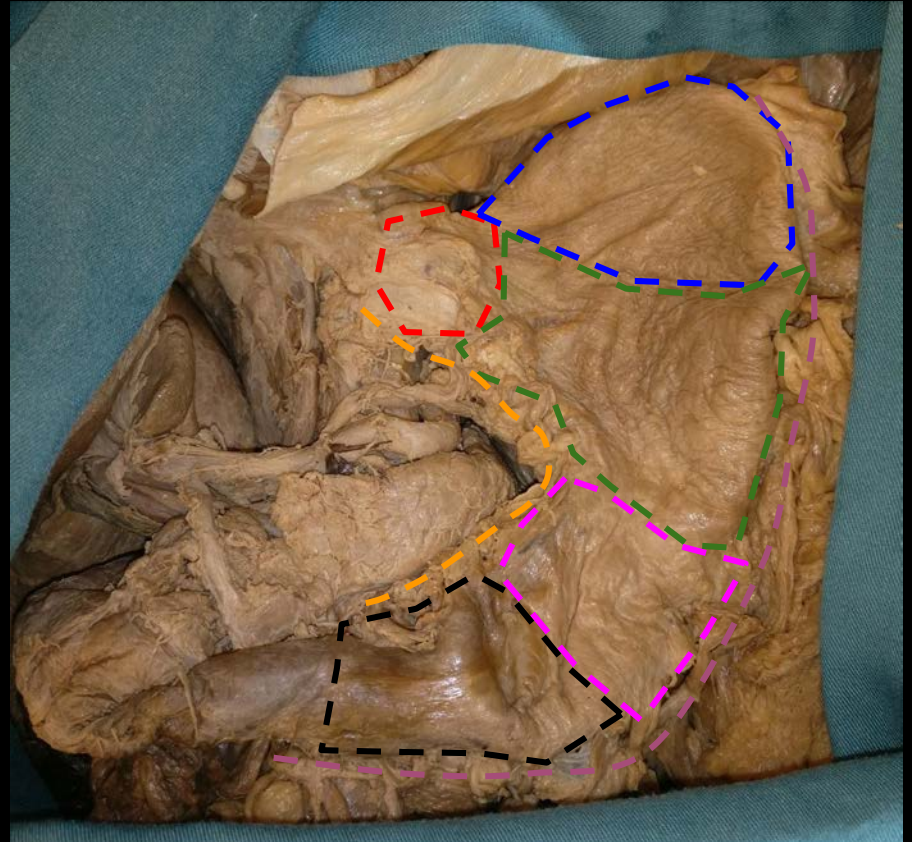
Body

Greater Curvature

Lesser Curvature

Antrum

Pylorus



a place of mind  
THE UNIVERSITY OF BRITISH COLUMBIA

**Faculty of Medicine**

Southern Medical Program

# The Duodenum

Structures in View:

First Part

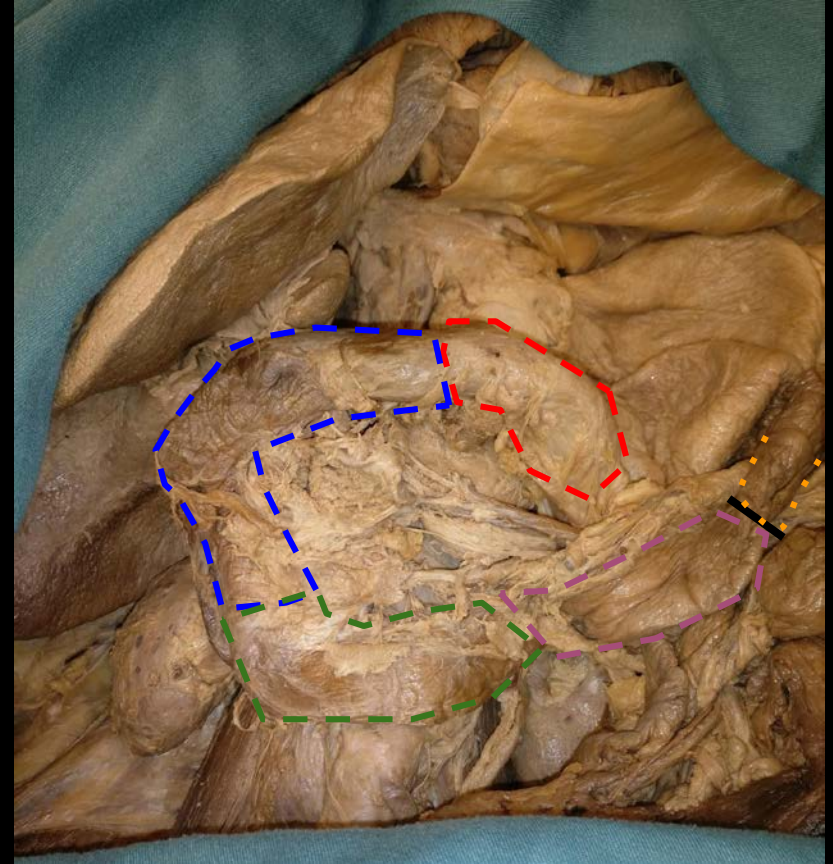
Second Part

Third Part

Fourth Part

Duodenojejunal Junction

Jejunum



a place of mind  
THE UNIVERSITY OF BRITISH COLUMBIA

**Faculty of Medicine**

Southern Medical Program

# The Pancreas

Structures in View:

Head

Neck

Body

Liver

Stomach

Duodenum



a place of mind  
THE UNIVERSITY OF BRITISH COLUMBIA

**Faculty of Medicine**

Southern Medical Program

# The Spleen

Structures in View:

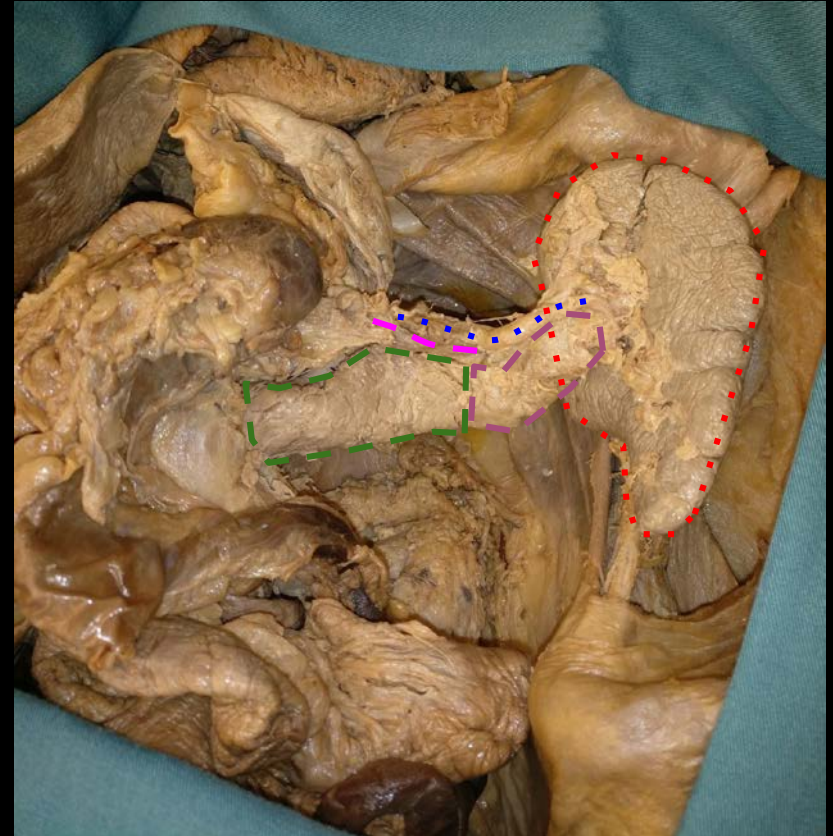
The Spleen

Splenic Artery

Splenic Vein (Barely Visible)

Body of Pancreas

Tail of Pancreas



a place of mind  
THE UNIVERSITY OF BRITISH COLUMBIA

Faculty of Medicine

Southern Medical Program

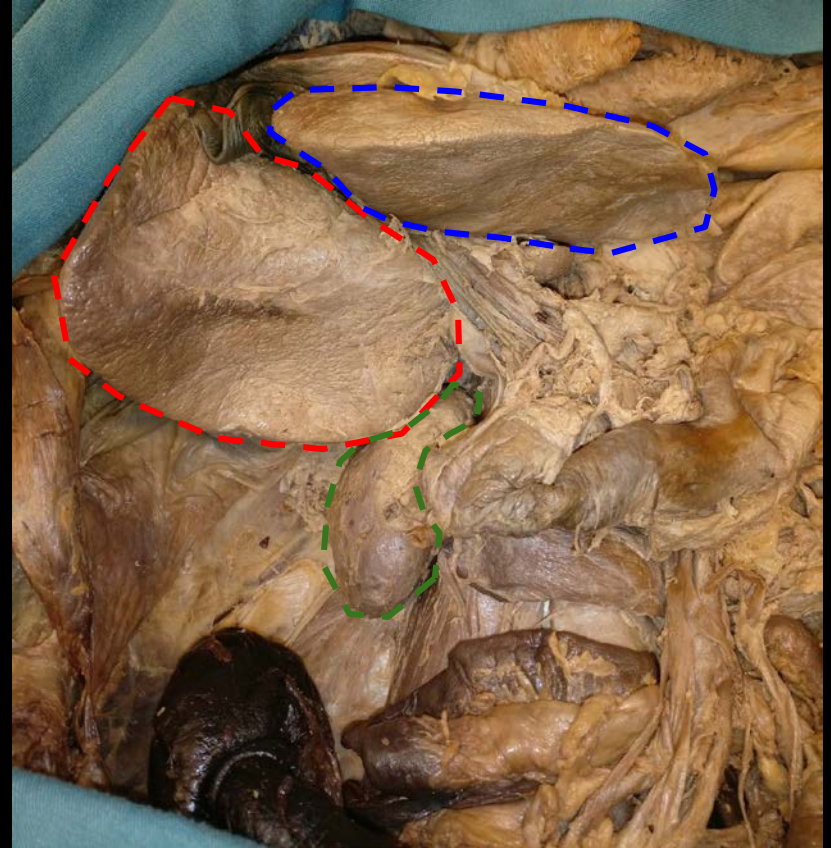
# The Liver

Structures in View:

Right Lobe (Inferior View)

Left Lobe (Inferior View)

Kidney (Right)



a place of mind  
THE UNIVERSITY OF BRITISH COLUMBIA

**Faculty of Medicine**

Southern Medical Program

# The Liver

Structures in View:

Right Lobe (Inferior View)

Left Lobe (Inferior View)

Gallbladder

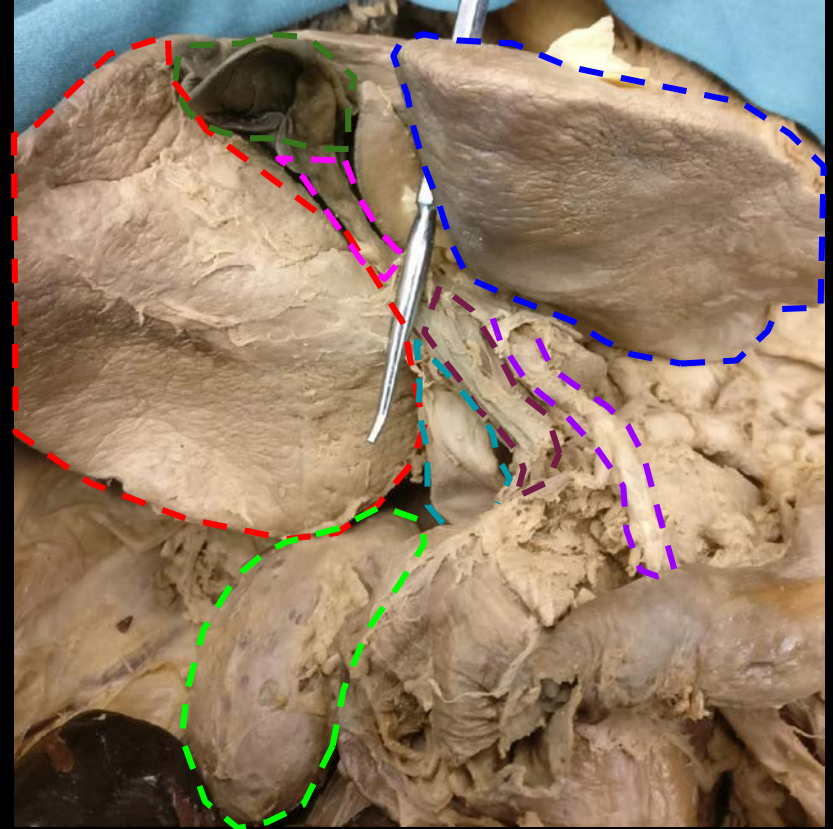
Cystic Duct

Right Kidney

Common Bile Duct

Common Hepatic (Becomes Hepatic Proper)

Hepatic Portal Vein



a place of mind  
THE UNIVERSITY OF BRITISH COLUMBIA

Faculty of Medicine

Southern Medical Program

# The Liver

Structures in View:

Abdominal Aorta

Inferior Vena Cava

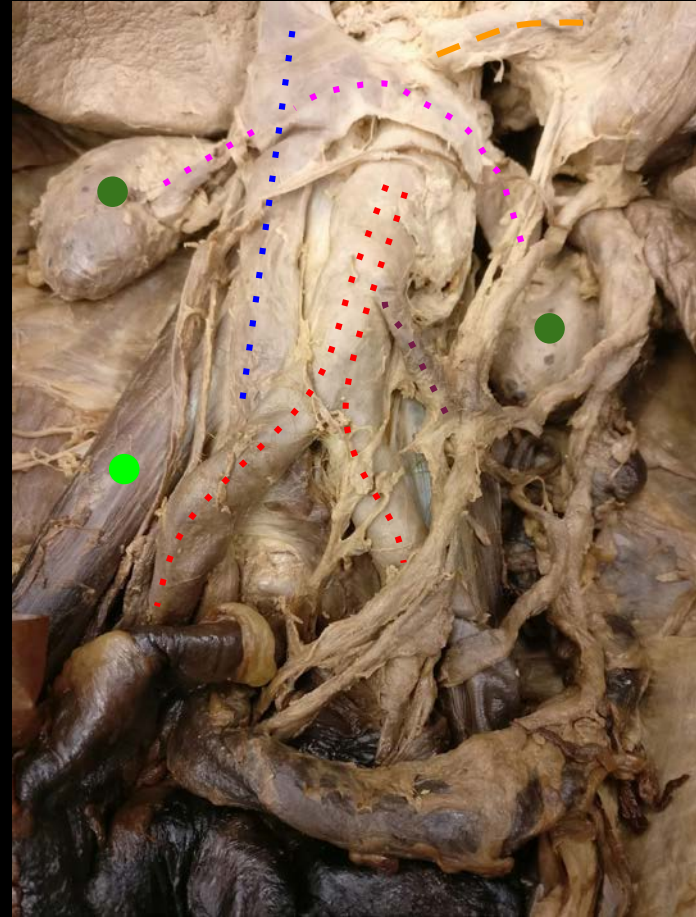
Kidneys

Renal Veins

Psoas

Inferior Mesenteric Artery

Superior Mesenteric Artery



a place of mind  
THE UNIVERSITY OF BRITISH COLUMBIA

Faculty of Medicine

Southern Medical Program



# The Liver (Visceral Surface)

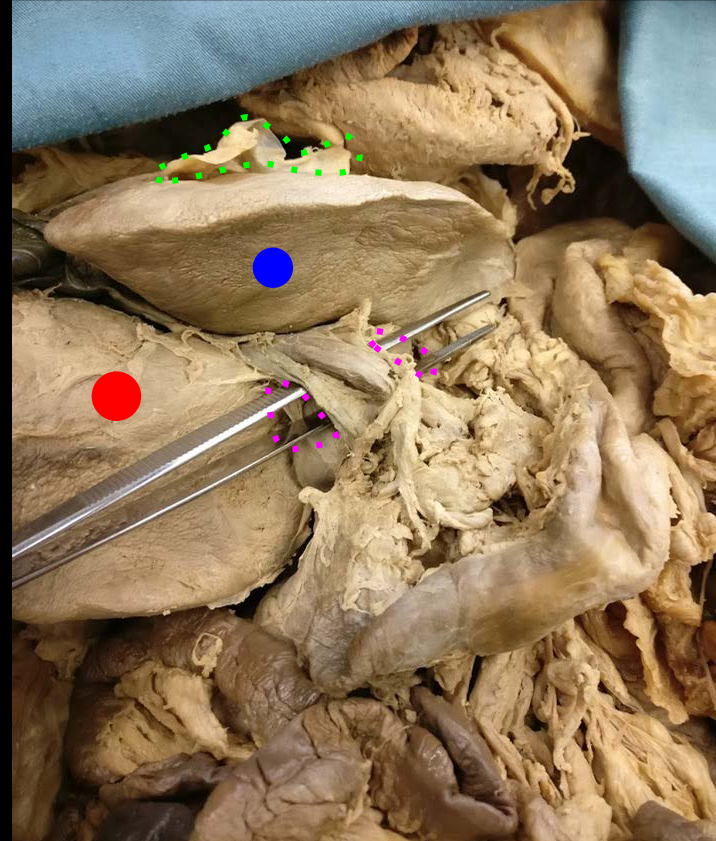
Structures in View:

Right Lobe

Left Lobe

Foramen of Winslow (Where  
Forceps Are)

Falciform Ligament



a place of mind  
THE UNIVERSITY OF BRITISH COLUMBIA

**Faculty of Medicine**

Southern Medical Program

# The Liver (Visceral Surface)

Structures in View:

Right Lobe

Left Lobe

Quadrate Lobe

Caudate Lobe

Gall Bladder



a place of mind  
THE UNIVERSITY OF BRITISH COLUMBIA

Faculty of Medicine

Southern Medical Program

# References

- Photo source: <https://nyamcenterforhistory.org/tag/andreas-vesalius/>



a place of mind  
THE UNIVERSITY OF BRITISH COLUMBIA

**Faculty of Medicine**

Southern Medical Program

DE HVMANI CORPORIS FABRICA LIBER I. 163  
HVMANI COR-  
SIMVL COMPACTO.  
EX FACIE EXPRES.  
PORIS OSSIVM  
RPN ANTERIORI  
SID.



# MEDD 411 ANATOMY



*KURT MCBURNEY, ASSOCIATE TEACHING PROFESSOR - IMP*  
*NICHOLAS BYERS - SMP*  
*PETER BAUMEISTER - SMP*



a place of mind

THE UNIVERSITY OF BRITISH COLUMBIA

**Faculty of Medicine**

Southern Medical Program

# Proof of Permission for Cadaveric Photos



## Island Medical Program

The University of British Columbia  
Faculty of Medicine MD  
Undergraduate Program  
delivered in collaboration with  
the University of Victoria

Kurt McBumey  
Associate Teaching Professor  
Island Medical Program/Division of Medical Sciences  
University of British Columbia and University of Victoria  
[mcbumey@uvic.ca](mailto:mcbumey@uvic.ca)  
250-472-5336 (office)  
250-418-1542 (cell)

To Whom It May Concern:

During 6 week FLEX cycle of April/May 2018, Peter Baumeister and Nick Byers completed a dissection/learning resource project here at the Island Medical Program. They completed dissections of the lower limb corresponding to the upcoming fall gross anatomy laboratories.

As part of this project they took photographs of their dissections with the purpose of creating digital index cards which will help students in future labs with these lower limb dissections. Long before they began the project they asked for, and received, my permission to take and subsequently use the photos to create the digital index cards.

As a final check—as protection for themselves, their work and my responsibility for cadaveric donations—I will vet the final versions of the digital index cards to ensure there are no concerns regarding the photographs and the cadaveric material.

Thank you,

Kurt McBumey



a place of mind  
THE UNIVERSITY OF BRITISH COLUMBIA

Faculty of Medicine  
Southern Medical Program

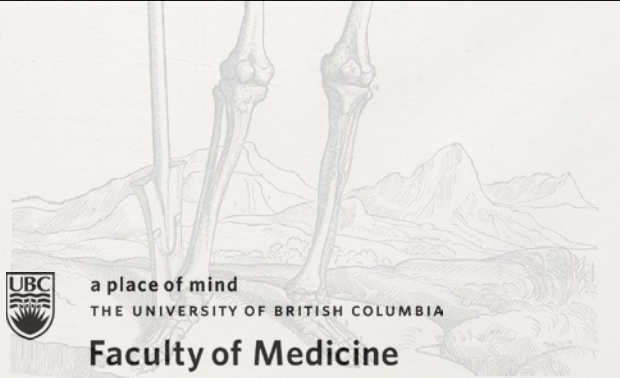
DE HVMANI CORPORIS FABRICA LIBER I. 169  
HVMANI COR-  
SIMVL COMPACTO.  
EX FACIE EXPRES.  
PORIS OSSIVM  
RPN ANTERIORI  
SID.



# LABORATORY 9



*MIDGUT AND HINDGUT ORGANS AND VESSELS*



a place of mind  
THE UNIVERSITY OF BRITISH COLUMBIA

**Faculty of Medicine**

Southern Medical Program

# INDEX

Anal Canal  
Appendix  
Ascending Colon  
Descending Colon  
Duodenum  
Haustra Coli  
Epiploic Appendages

Hepatic Portal Vein  
Ileocecal Junction and Valve  
Ileum  
Inferior Mesenteric Artery  
Jejunum

Rectum  
Sigmoid Colon  
Superior Mesenteric Artery  
Tenia Coli  
Transverse Colon



a place of mind  
THE UNIVERSITY OF BRITISH COLUMBIA

**Faculty of Medicine**

Southern Medical Program

# Abdomen

Structures in View:

Abdominal Aorta

Inferior Vena Cava

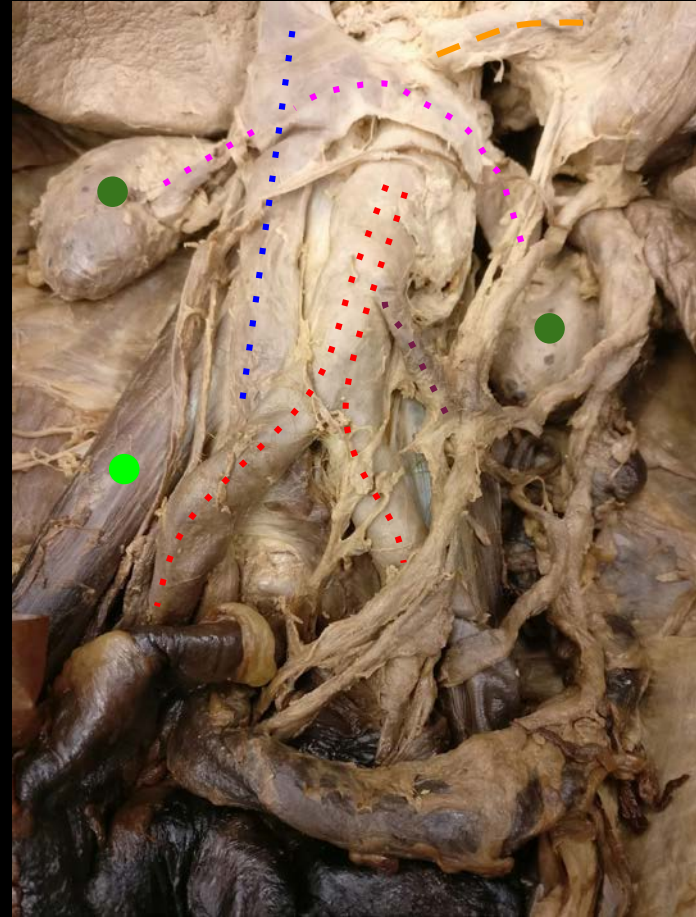
Kidneys

Renal Veins

Psoas

Inferior Mesenteric Artery

Superior Mesenteric Artery



a place of mind  
THE UNIVERSITY OF BRITISH COLUMBIA

Faculty of Medicine

Southern Medical Program



# Abdomen

Structures in View:

Pancreas

Liver

Kidney (Right)

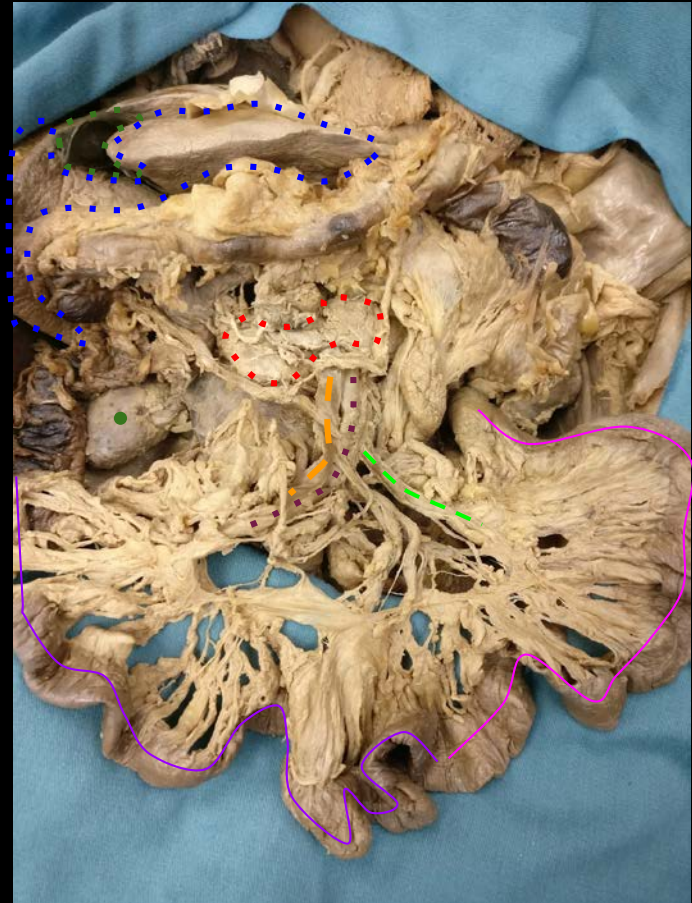
Jejunal Artery

Superior Mesenteric Artery

Superior Mesenteric Vein

Jejunum

Ileum



a place of mind  
THE UNIVERSITY OF BRITISH COLUMBIA

Faculty of Medicine

Southern Medical Program

# Abdomen

Structures in View:

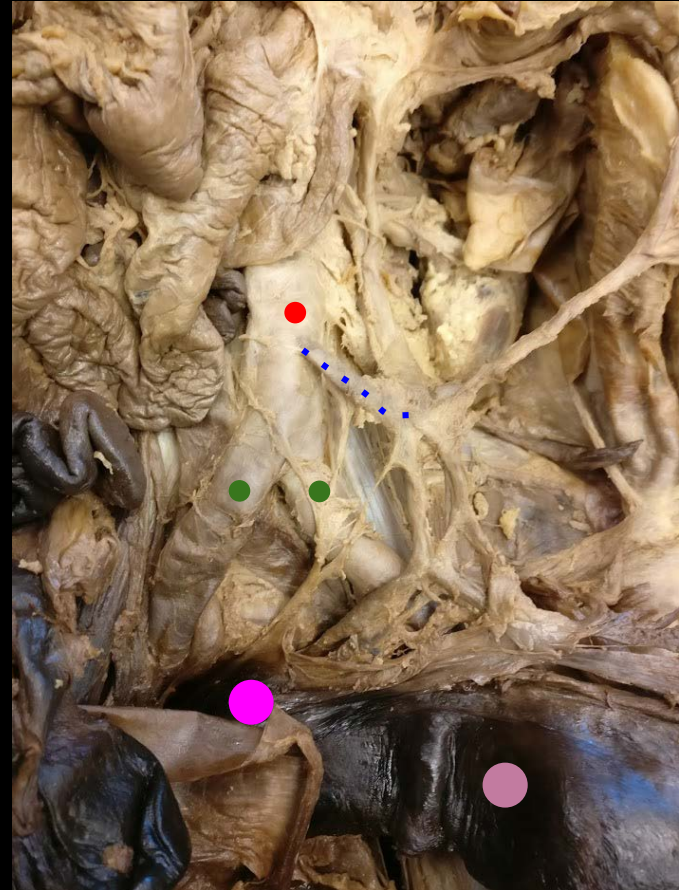
Abdominal Aorta

Inferior Mesenteric Artery

Common Iliac Arteries

Sigmoid Colon

Rectum



a place of mind  
THE UNIVERSITY OF BRITISH COLUMBIA

Faculty of Medicine

Southern Medical Program

# Abdomen

Structures in View:

- Abdominal Aorta
- Inferior Mesenteric Artery
- Ascending Colon
- Sigmoid Colon
- Transverse Colon
- Descending Colon
- Haustra Coli
- Tenia Coli



a place of mind  
THE UNIVERSITY OF BRITISH COLUMBIA

Faculty of Medicine

Southern Medical Program

# Abdomen

Structures in View:

Ileocecal Junction

Appendix

Cecum

Epiploic Appendices



a place of mind  
THE UNIVERSITY OF BRITISH COLUMBIA

**Faculty of Medicine**

Southern Medical Program

# References

- Photo source: <https://nyamcenterforhistory.org/tag/andreas-vesalius/>



a place of mind  
THE UNIVERSITY OF BRITISH COLUMBIA

**Faculty of Medicine**

Southern Medical Program

DE HVMANI CORPORIS FABRICA LIBER I. 169  
HVMANI COR-  
SIMVL COMPACTO.  
EX FACIE EXPRES.  
PORIS OSSIVM  
RPN ANTERIORI  
SID.



# MEDD 411 ANATOMY



*KURT MCBURNEY, ASSOCIATE TEACHING PROFESSOR - IMP*  
*NICHOLAS BYERS - SMP*  
*PETER BAUMEISTER - SMP*



a place of mind

THE UNIVERSITY OF BRITISH COLUMBIA

**Faculty of Medicine**

Southern Medical Program

# Proof of Permission for Cadaveric Photos



## Island Medical Program

The University of British Columbia  
Faculty of Medicine MD  
Undergraduate Program  
delivered in collaboration with  
the University of Victoria

Kurt McBumey  
Associate Teaching Professor  
Island Medical Program/Division of Medical Sciences  
University of British Columbia and University of Victoria  
[mcbumey@uvic.ca](mailto:mcbumey@uvic.ca)  
250-472-5336 (office)  
250-418-1542 (cell)

To Whom It May Concern:

During 6 week FLEX cycle of April/May 2018, Peter Baumeister and Nick Byers completed a dissection/learning resource project here at the Island Medical Program. They completed dissections of the lower limb corresponding to the upcoming fall gross anatomy laboratories.

As part of this project they took photographs of their dissections with the purpose of creating digital index cards which will help students in future labs with these lower limb dissections. Long before they began the project they asked for, and received, my permission to take and subsequently use the photos to create the digital index cards.

As a final check—as protection for themselves, their work and my responsibility for cadaveric donations—I will vet the final versions of the digital index cards to ensure there are no concerns regarding the photographs and the cadaveric material.

Thank you,

Kurt McBumey



a place of mind  
THE UNIVERSITY OF BRITISH COLUMBIA

Faculty of Medicine  
Southern Medical Program

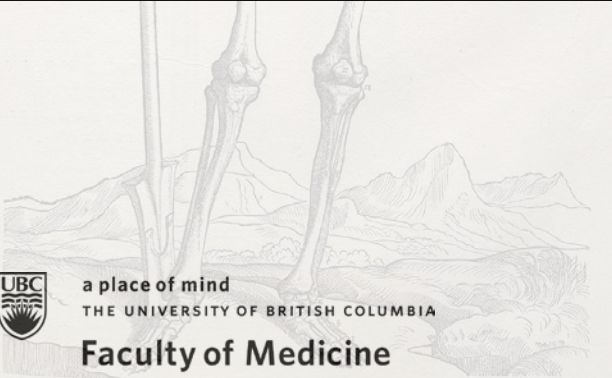
DE HVMANI CORPORIS FABRICA LIBER I. 163  
HVMANI COR-  
SIMVL COMPACTO.  
EX FACIE EXPRES.  
PORIS OSSIVM  
RPN ANTERIORI  
SID.



# LABORATORY 10



## PELVIC WALLS AND VISCERA



a place of mind  
THE UNIVERSITY OF BRITISH COLUMBIA

**Faculty of Medicine**

Southern Medical Program



# INDEX

Ala of Sacrum  
Anterior Superior Iliac Spine  
Coccyx  
Crest of Ilium  
Facet For Sacroiliac Joint  
Hip (Pelvic) Bone  
Ilium  
Ischial Spine  
Ischial Tuberosity  
Ischiopubic (Pubic) Arch  
Ischium  
Obturator Foramen  
Pubic Crest  
Pubic Symphysis  
Pubic Tubercle  
Pubis  
Sacrum

Adrenal (Suprarenal) Glands  
Broad Ligament  
External Iliac Artery  
Greater Sciatic Foramen  
Inferior Vesicular Artery  
Internal Iliac Artery  
**Kidney(s)**  
Lesser Sciatic Foramen  
Levator Ani Muscle  
Ligament of Ovary  
Mesometrium  
Mesosalpinx  
Mesovarium  
Obturator  
Obturator Canal  
Obturator Internus Muscle  
Ovaries  
Piriformis Muscle

Prostate  
Rectouterine Pouch  
Rectum  
Renal Pelvis  
Round Ligament of Uterus  
Sacrospinous Ligament  
Sacrotuberous Ligament  
Seminal Vesicles  
Superior Vesicular Artery  
Suspensory Ligament of Ovary  
**Testicular Artery/ Ovarian Artery**  
Umbilical Artery  
**Ureter**  
Urethra  
Urinary Bladder  
Uterine Artery  
Uterus



a place of mind  
THE UNIVERSITY OF BRITISH COLUMBIA

**Faculty of Medicine**

Southern Medical Program

# Pelvic Osteology

Structures in View:

Ala of Sacrum

Pubic Symphysis

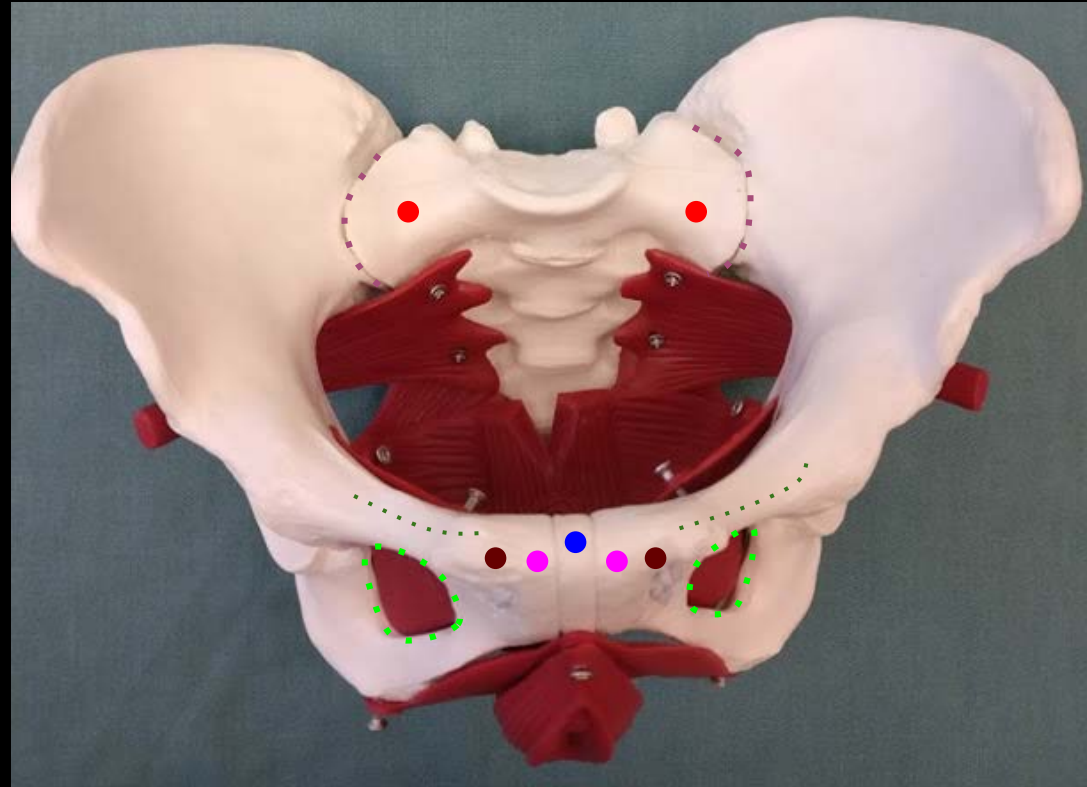
Ischiopubic Arch

Sacroiliac Joint

Obturator Foramen

Pubic Tubercle

Pubic Crest



a place of mind  
THE UNIVERSITY OF BRITISH COLUMBIA

Faculty of Medicine

Southern Medical Program

# Pelvic Osteology

Structures in View:

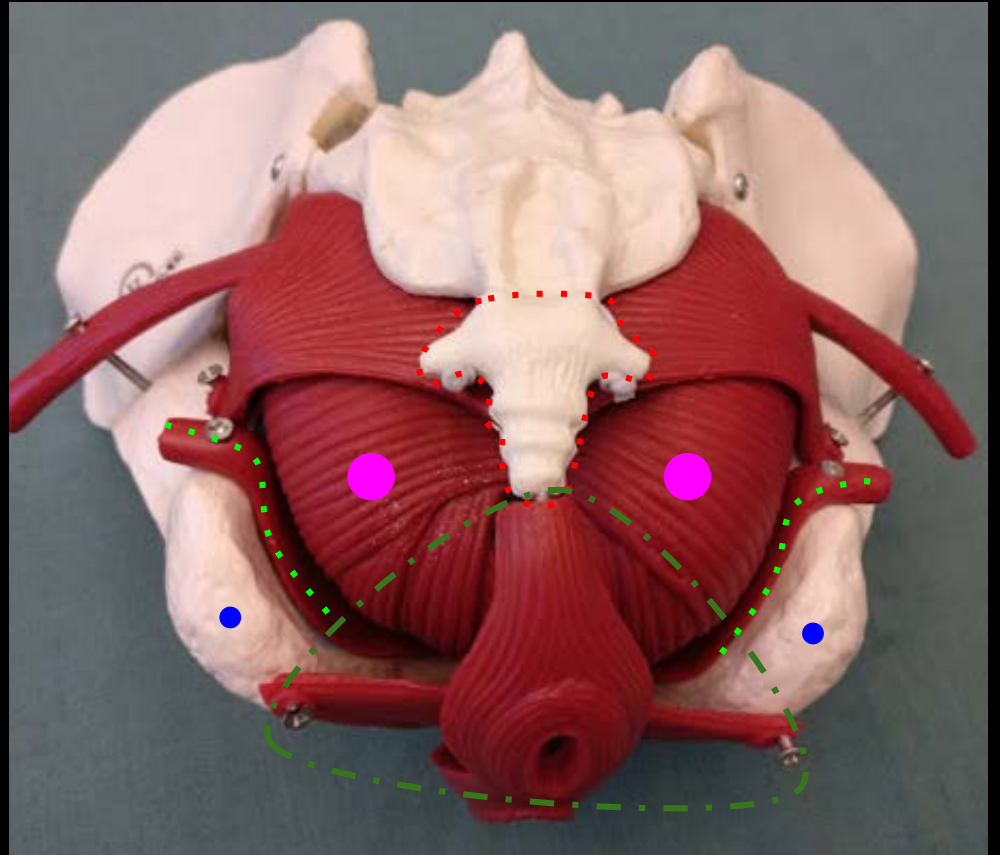
Coccyx

Ischial Tuberosity

Anal Triangle

Obturator Internus

Levator Ani



a place of mind  
THE UNIVERSITY OF BRITISH COLUMBIA

Faculty of Medicine

Southern Medical Program

# Right Pelvis

Structures in View:

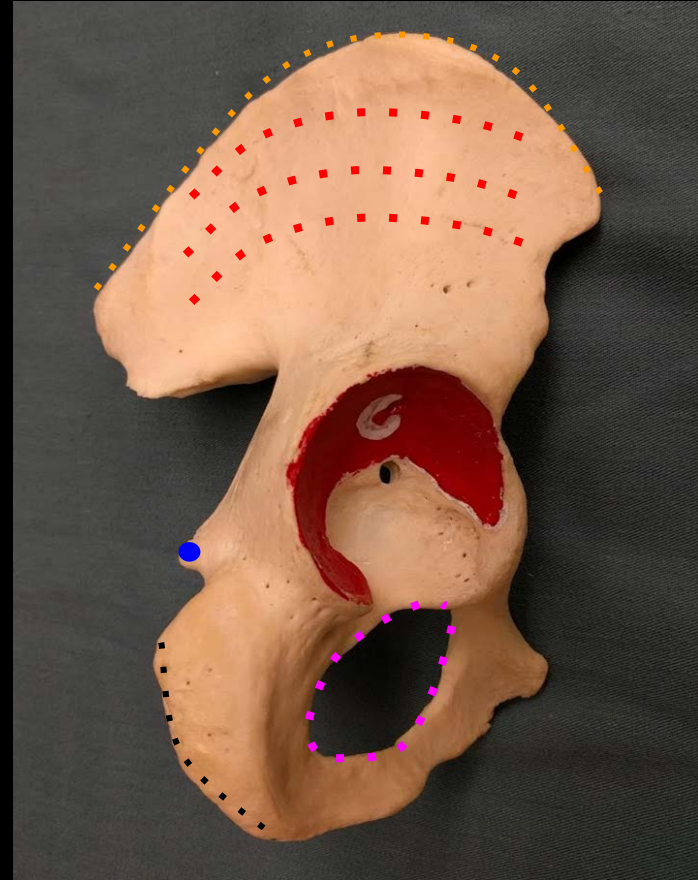
Gluteal Surface

Obturator Foramen

Iliac Crest

Ischial Spine

Ischial Tuberosity



a place of mind  
THE UNIVERSITY OF BRITISH COLUMBIA

**Faculty of Medicine**

Southern Medical Program

# Kidneys and Vasculature

Structures in View:

Abdominal Aorta

Inferior Vena Cava

Kidneys

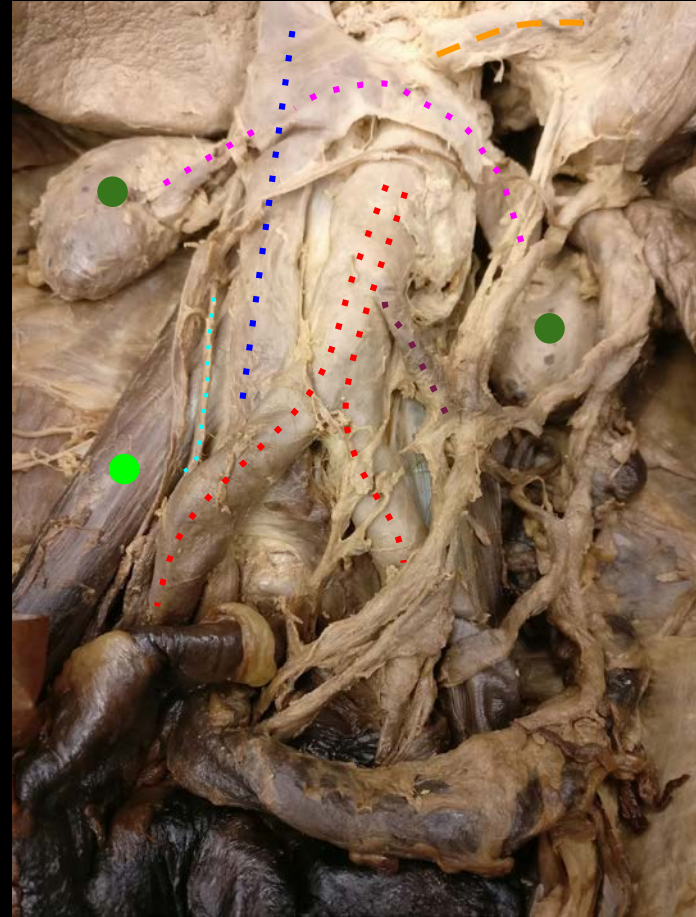
Renal Veins

Right Gonadal Artery and Vein

Psoas

Inferior Mesenteric Artery

Superior Mesenteric Artery



a place of mind  
THE UNIVERSITY OF BRITISH COLUMBIA

Faculty of Medicine

Southern Medical Program

# Female Pelvis

Structures in View:

Urinary Bladder

Vesicouterine Pouch

Uterus

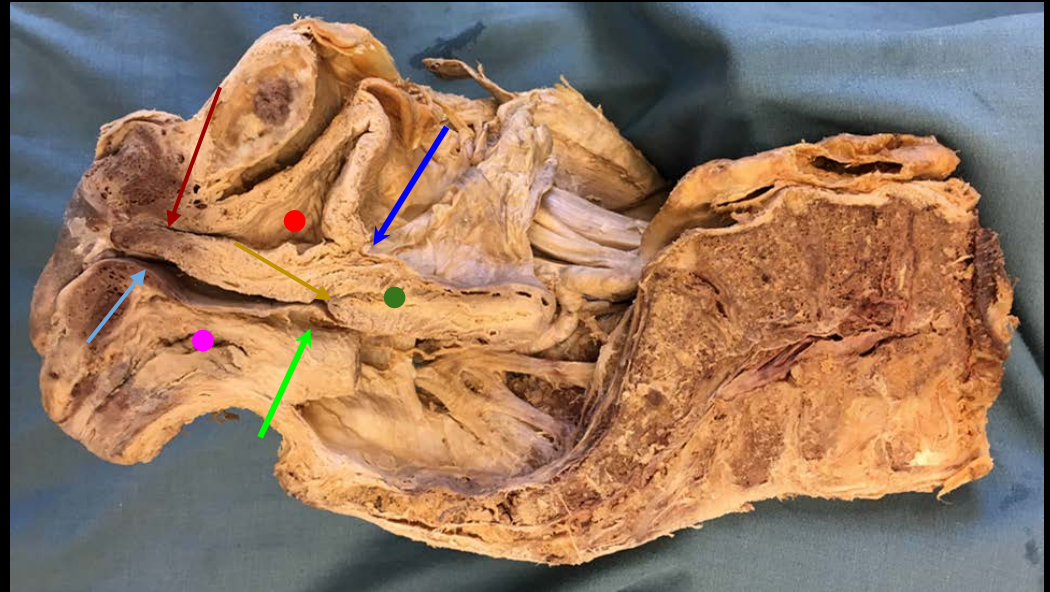
Rectum

Rectouterine Pouch

Vagina

Urethra

Cervix



a place of mind  
THE UNIVERSITY OF BRITISH COLUMBIA

**Faculty of Medicine**

Southern Medical Program

# Female Pelvis

Structures in View:

Ovary

Suspensory Ligament of Ovary

Ligament of Ovary

Round Ligament of Uterus

Broad Ligament (Comprised of 3 Parts)

Mesosalpinx (Covering Fallopian Tube)

Mesovarium (Covering Ovary)

Mesometrium (Covering Uterus)

Bladder



a place of mind  
THE UNIVERSITY OF BRITISH COLUMBIA

Faculty of Medicine

Southern Medical Program

# Female Pelvis

Structures in View:

Common Iliac Artery

Internal Iliac Artery

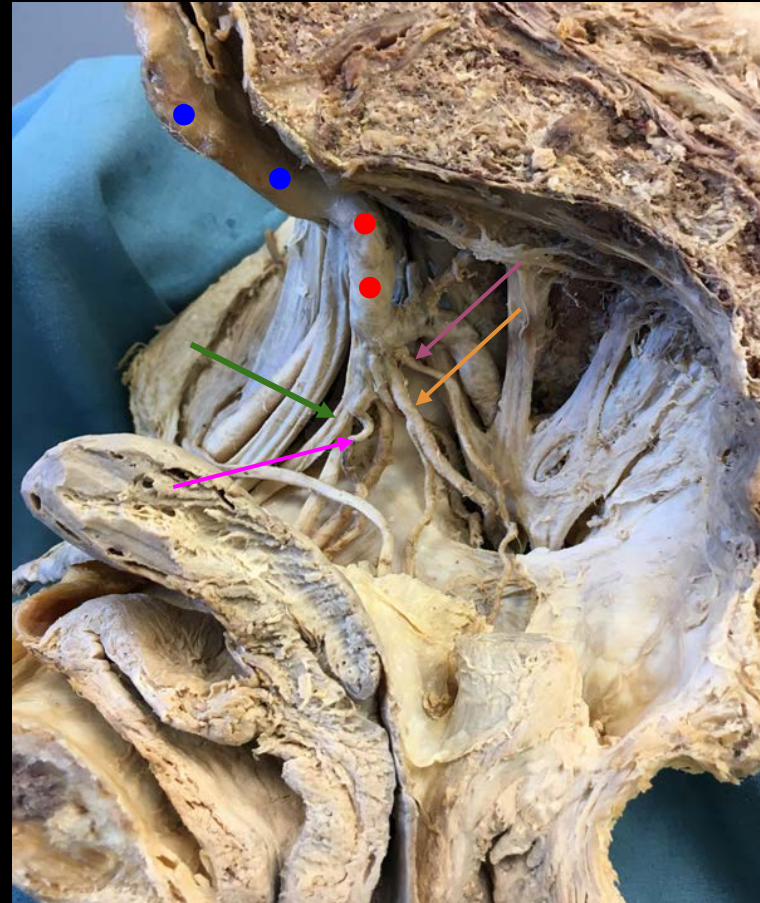
Obliterated Umbilical Artery

Obturator Artery

Pudendal Artery

Uterine Artery

Superior Vesicular Artery



a place of mind  
THE UNIVERSITY OF BRITISH COLUMBIA

Faculty of Medicine

Southern Medical Program



# Pelvis

Structures in View:

Sacrum

Sacrospinous Ligament (Deep To

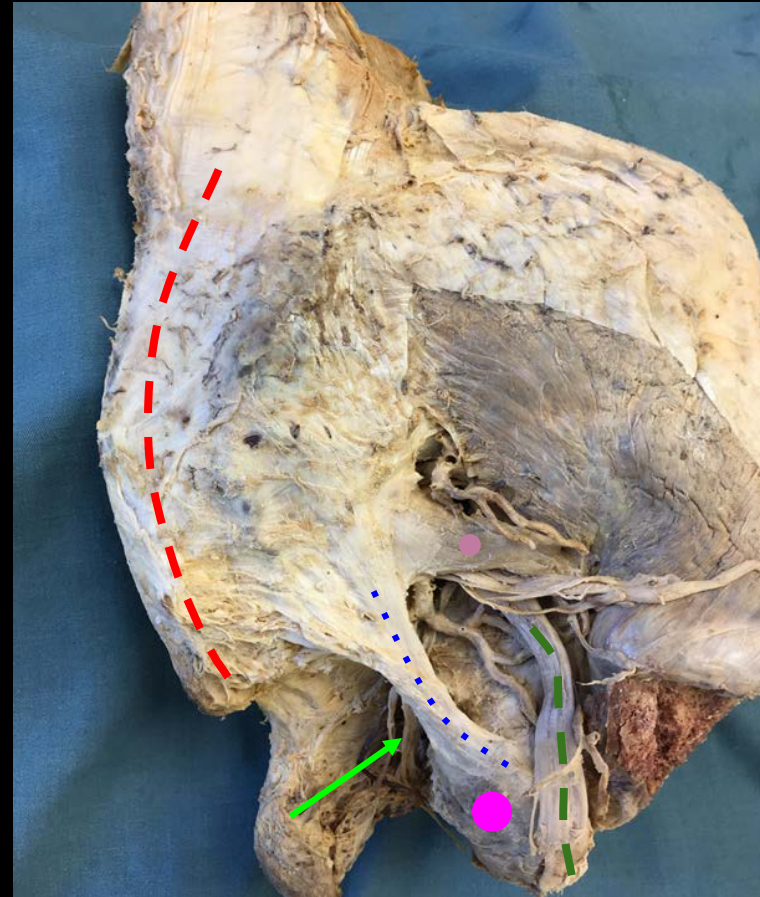
Sacrospinous Ligament (Deep To  
Sacrospinous)

Sciatic Nerve

Piriformis Muscle

Ischial Tuberosity

Pudendal Nerve



a place of mind  
THE UNIVERSITY OF BRITISH COLUMBIA

Faculty of Medicine

Southern Medical Program

# Male Pelvis

Structures in View:

Sacrum

Urinary Bladder

Prostate

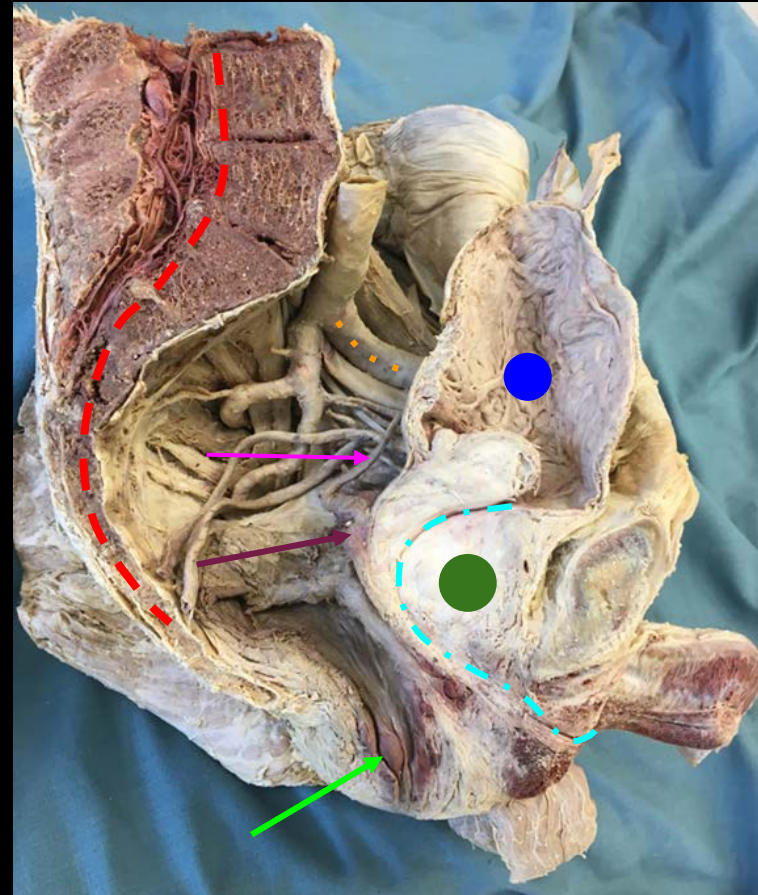
Seminal Vesicle

External Iliac Artery

Urethra

Vas Deferens

Rectum



a place of mind  
THE UNIVERSITY OF BRITISH COLUMBIA

Faculty of Medicine

Southern Medical Program

# Male Pelvis

Structures in View:

Pre-Prostatic Urethra

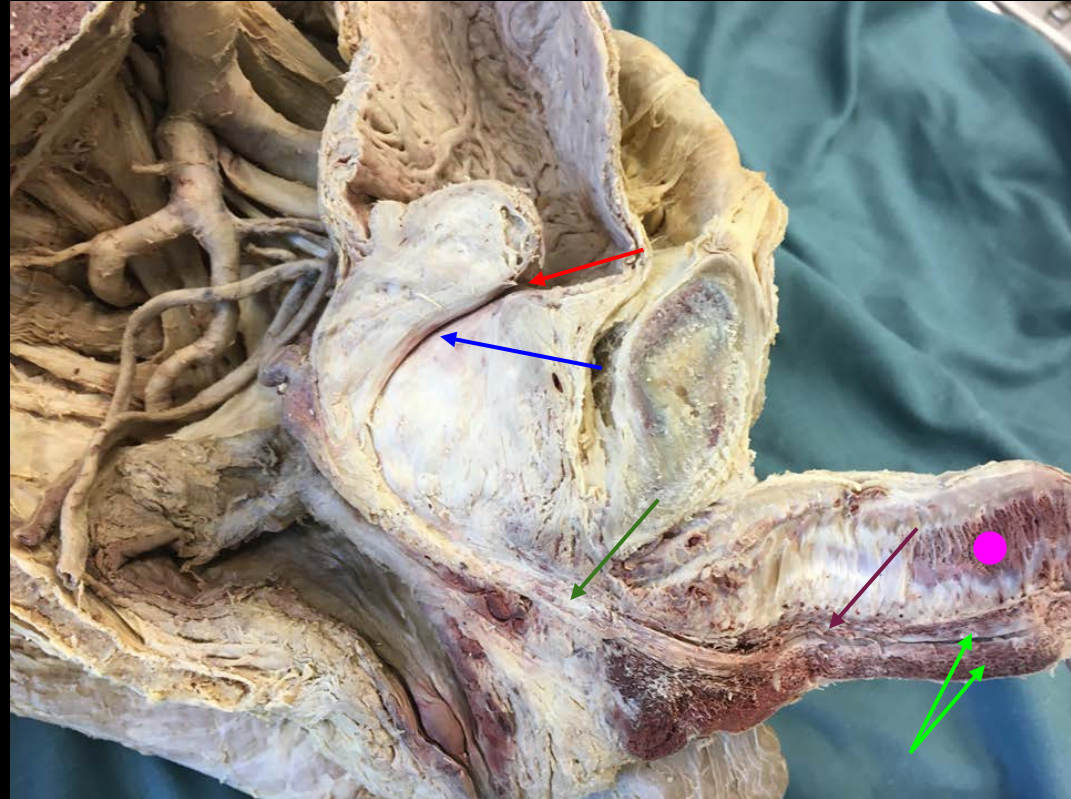
Prostatic Urethra

Membranous Urethra

Spongy Penile Urethra

Corpus Cavernosum

Corpus Spongiosum



a place of mind  
THE UNIVERSITY OF BRITISH COLUMBIA

Faculty of Medicine

Southern Medical Program

# Male Gonad

Structures in View:

Testis

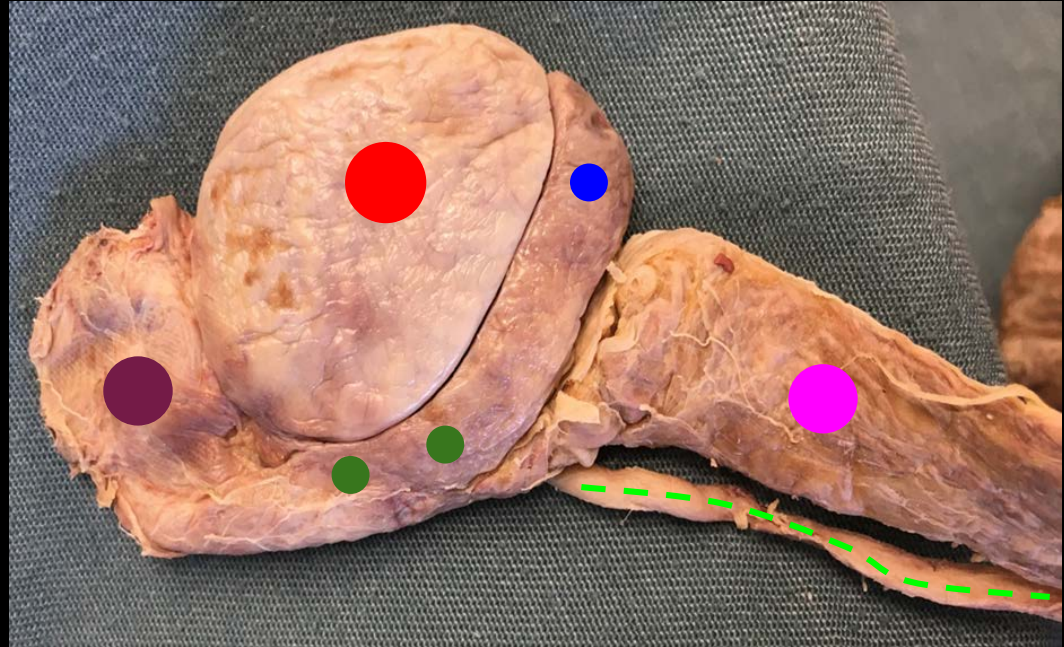
Tail of Epididymis

Body of Epididymis

Head of Epididymis

Spermatic Cord

Vas Deferens



a place of mind  
THE UNIVERSITY OF BRITISH COLUMBIA

**Faculty of Medicine**

Southern Medical Program

# References

- Photo source: <https://nyamcenterforhistory.org/tag/andreas-vesalius/>



a place of mind  
THE UNIVERSITY OF BRITISH COLUMBIA

**Faculty of Medicine**

Southern Medical Program

DE HVMANI CORPORIS FABRICA LIBER I. 163  
HVMANI COR-  
SIMVL COMPACTO.  
EX FACIE EXPRES.  
PORIS OSSIVM  
RPN ANTERIORI  
SID.



# MEDD 411 ANATOMY



*KURT MCBURNEY, ASSOCIATE TEACHING PROFESSOR - IMP*  
*NICHOLAS BYERS - SMP*  
*PETER BAUMEISTER - SMP*



a place of mind

THE UNIVERSITY OF BRITISH COLUMBIA

**Faculty of Medicine**

Southern Medical Program

# Proof of Permission for Cadaveric Photos



## Island Medical Program

The University of British Columbia  
Faculty of Medicine MD  
Undergraduate Program  
delivered in collaboration with  
the University of Victoria

Kurt McBumey  
Associate Teaching Professor  
Island Medical Program/Division of Medical Sciences  
University of British Columbia and University of Victoria  
[mcbumey@uvic.ca](mailto:mcbumey@uvic.ca)  
250-472-5336 (office)  
250-418-1542 (cell)

To Whom It May Concern:

During 6 week FLEX cycle of April/May 2018, Peter Baumeister and Nick Byers completed a dissection/learning resource project here at the Island Medical Program. They completed dissections of the lower limb corresponding to the upcoming fall gross anatomy laboratories.

As part of this project they took photographs of their dissections with the purpose of creating digital index cards which will help students in future labs with these lower limb dissections. Long before they began the project they asked for, and received, my permission to take and subsequently use the photos to create the digital index cards.

As a final check—as protection for themselves, their work and my responsibility for cadaveric donations—I will vet the final versions of the digital index cards to ensure there are no concerns regarding the photographs and the cadaveric material.

Thank you,

Kurt McBumey



a place of mind  
THE UNIVERSITY OF BRITISH COLUMBIA

Faculty of Medicine  
Southern Medical Program

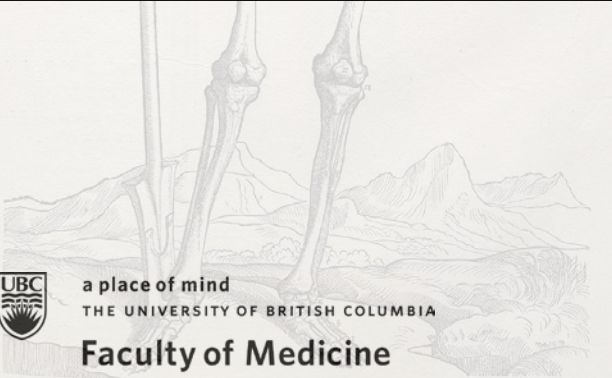
DE HVMANI CORPORIS FABRICA LIBER I. 163  
HVMANI COR-  
SIMVL COMPACTO.  
EX FACIE EXPRES.  
PORIS OSSIVM  
RPN ANTERIORI  
SID.



# LABORATORY 11



## *THE PERINEUM*



a place of mind

THE UNIVERSITY OF BRITISH COLUMBIA

**Faculty of Medicine**

Southern Medical Program



# INDEX

Anal Triangle

**Bulb of The Vestibule**

Bulbospongiosus Muscle

Coccyx

Corpus Caverosum

Corpus Spongiosum (Male)

Crus of Clitoris

**Dorsal Artery of Penis Or Clitoris**

**Dorsal Nerve of Clitoris Or Penis**

**Dorsal Vein of Penis Or Clitoris**

Glans of The Clitoris

**Glans Penis**

Greater Vestibular (Bartholin's)  
Gland

Inferior Rectal Nerve

**Internal Pudendal Artery and  
Vein**

Ischial Spine

Ischial Tuberosity

Ischiocavernosus Muscle

Ischiopubic Arch

Ischiorectal Fossa

Levator Ani

Obturator Internus

**Perineal Membrane**

Perineal Nerve

Pubic Symphysis

Pudendal Nerve

**Superficial Perineal Pouch**

Superficial Transverse Perineal Muscle

Urethra

Urogenital Triangle

Vagina



a place of mind  
THE UNIVERSITY OF BRITISH COLUMBIA

**Faculty of Medicine**

Southern Medical Program

# Pelvic Osteology

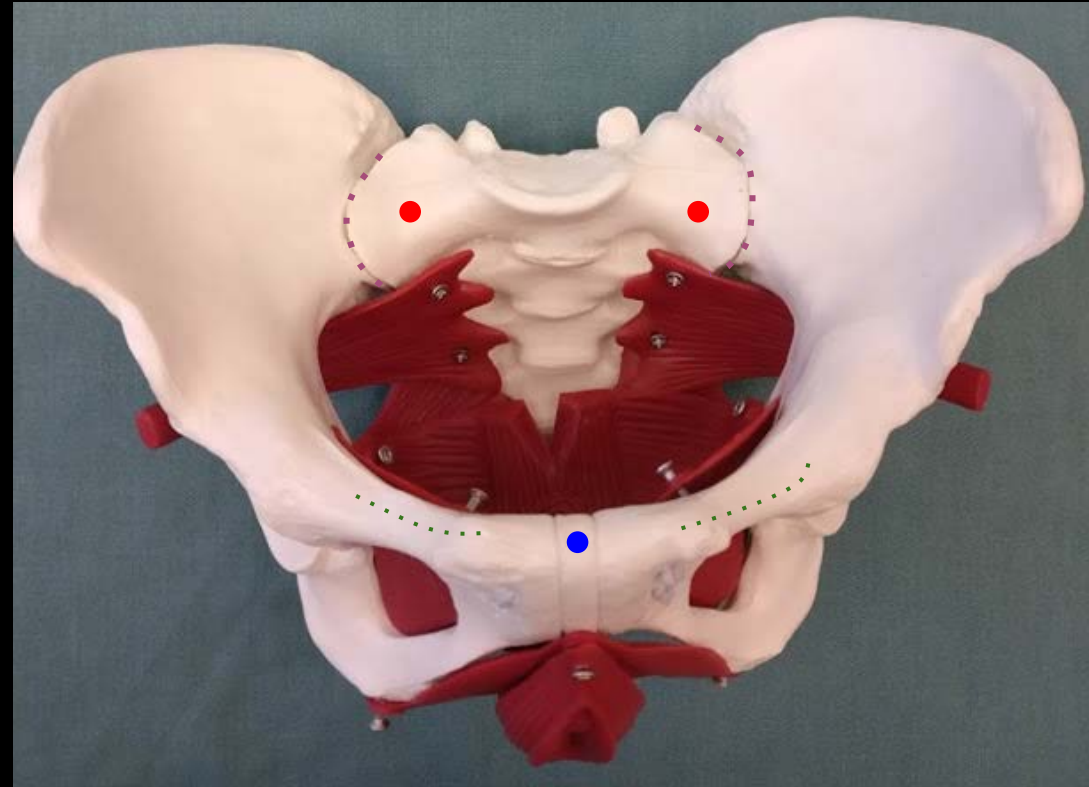
Structures in View:

Ala of Sacrum

Pubic Symphysis

Ischiopubic Arch

Sacroiliac Joint



a place of mind  
THE UNIVERSITY OF BRITISH COLUMBIA

**Faculty of Medicine**

Southern Medical Program

# Right Pelvis

Structures in View:

Anterior Superior Iliac Spine

Acetabulum

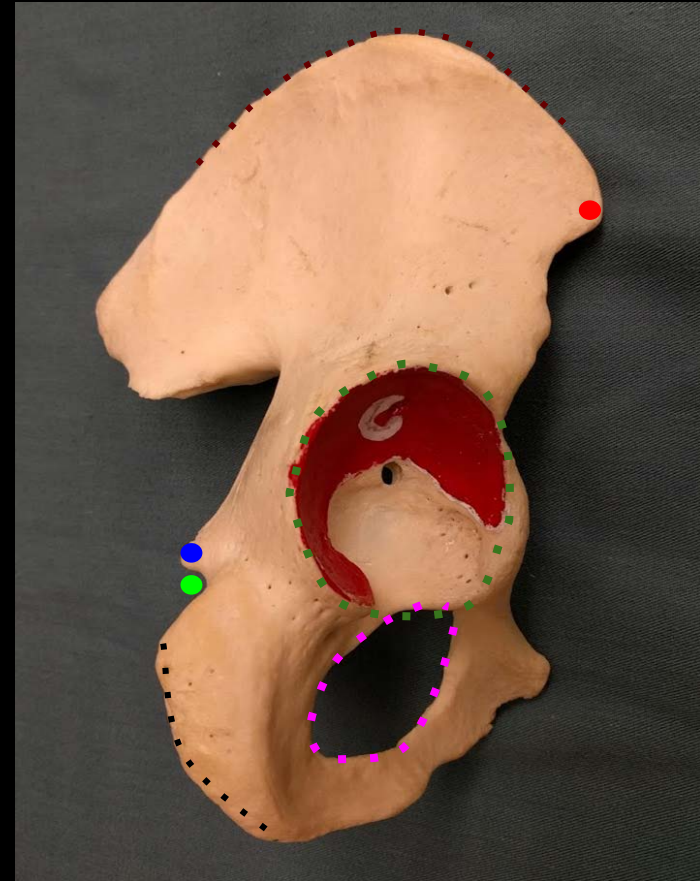
Obturator Foramen

Iliac Crest

Ischial Spine

Lesser Sciatic Notch

Ischial Tuberosity



a place of mind  
THE UNIVERSITY OF BRITISH COLUMBIA

Faculty of Medicine

Southern Medical Program

# Pelvic Osteology

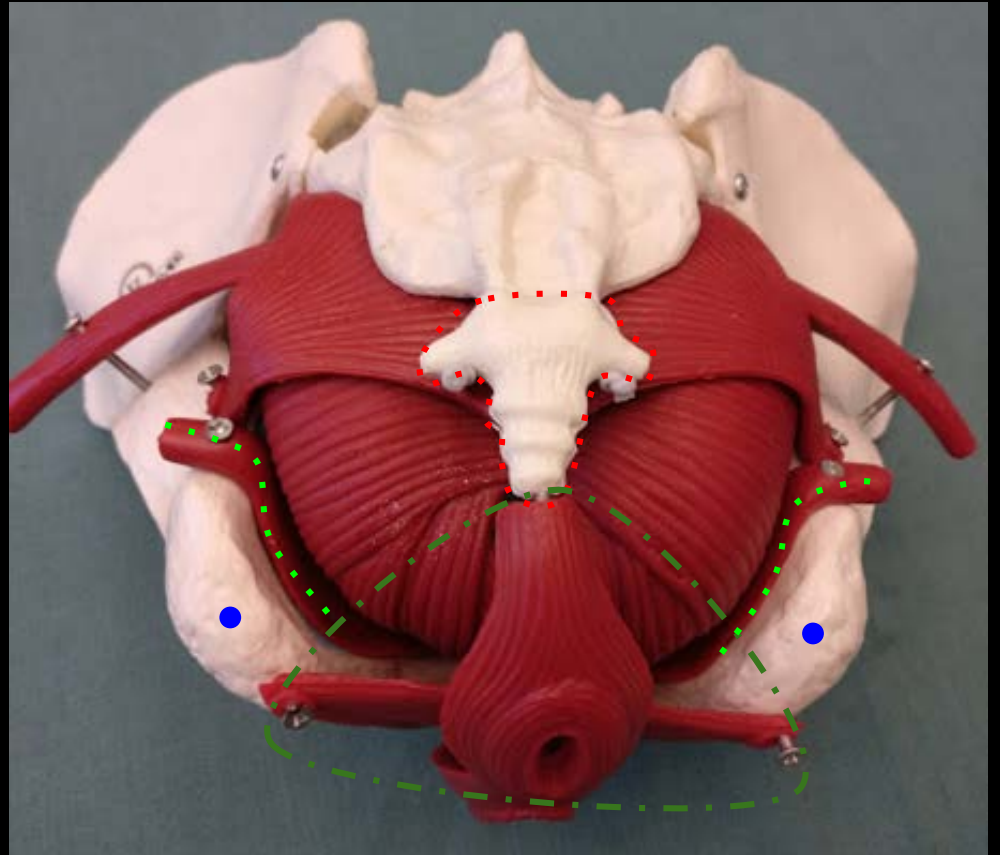
Structures in View:

Coccyx

Ischial Tuberosity

Anal Triangle

Obturator Internus



a place of mind  
THE UNIVERSITY OF BRITISH COLUMBIA

Faculty of Medicine

Southern Medical Program

# Pelvic Osteology

Structures in View:

Pubic Symphysis

Ischiopubic Arch

Urogenital Triangle

Bulbospongiosus

Ischiocavernosus

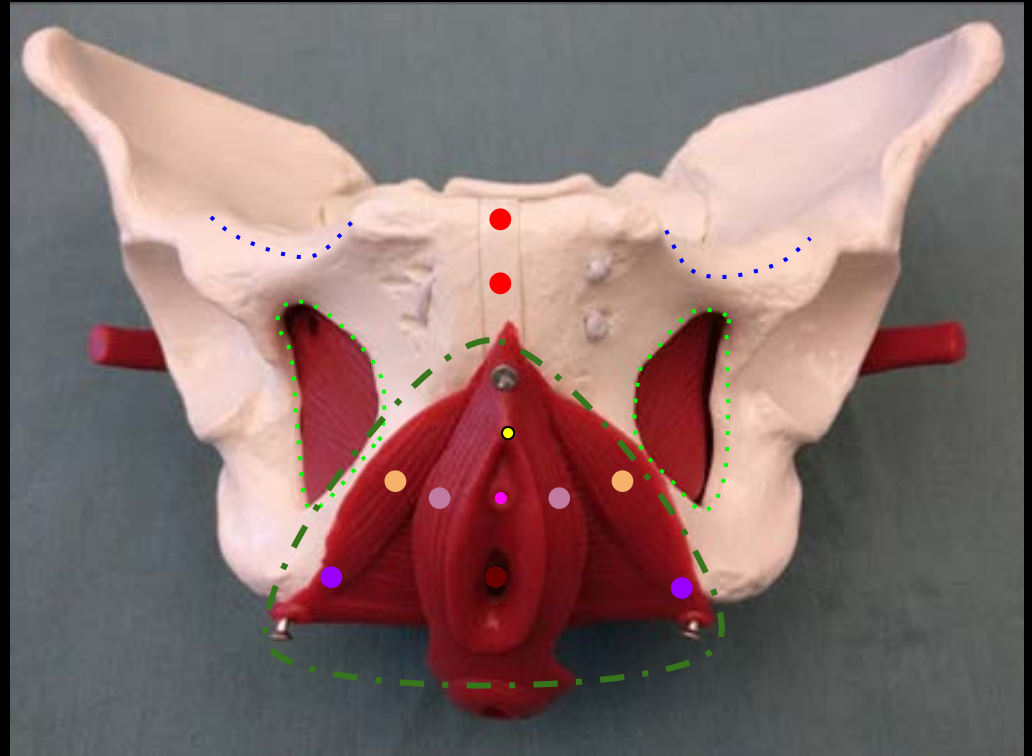
Urethra

Obturator Foramen

Vagina

**Glans of Clitoris**

Crura of Clitoris (Covered by  
Ischiocavernosus Muscle)



a place of mind  
THE UNIVERSITY OF BRITISH COLUMBIA

Faculty of Medicine

Southern Medical Program

# Pelvic Osteology

Structures in View:

Urogenital Triangle

Anal Triangle

External Anal Sphincter

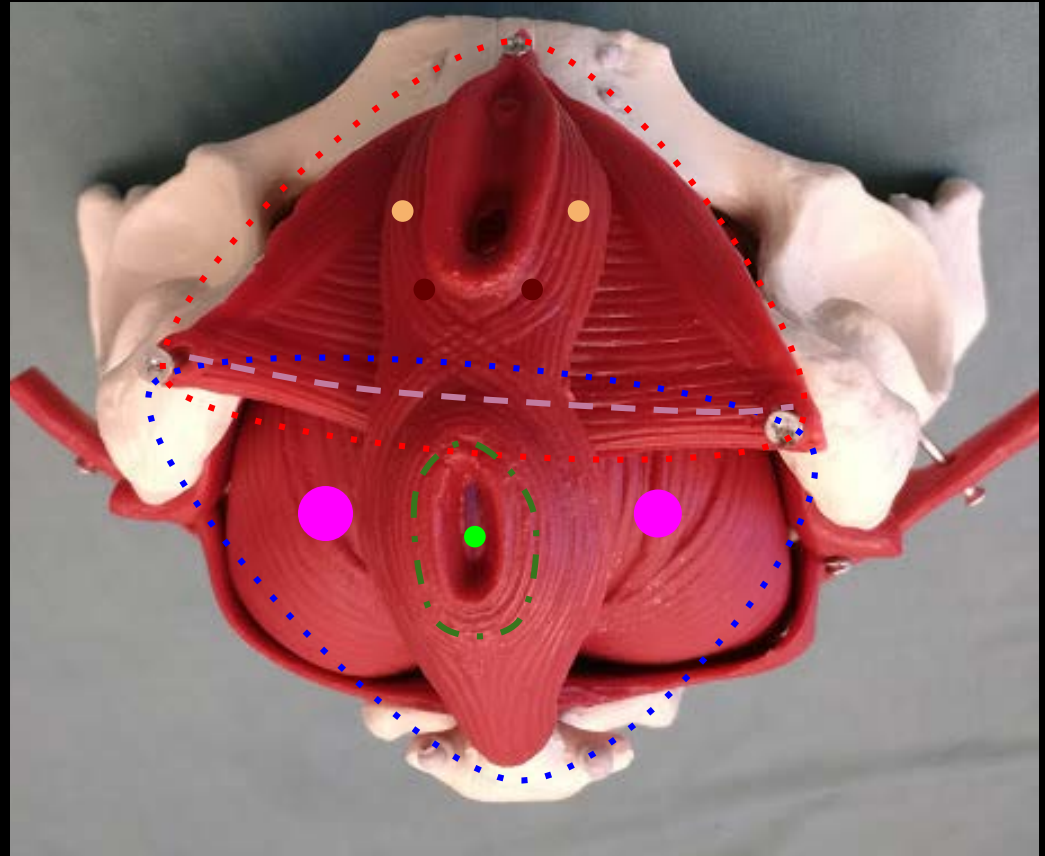
Transverse Perineal Muscle

Bulbospongiosus Muscle

Levator Ani

Anus

(Location of) Bartholin's Glands  
(Deep)



a place of mind  
THE UNIVERSITY OF BRITISH COLUMBIA

Faculty of Medicine

Southern Medical Program

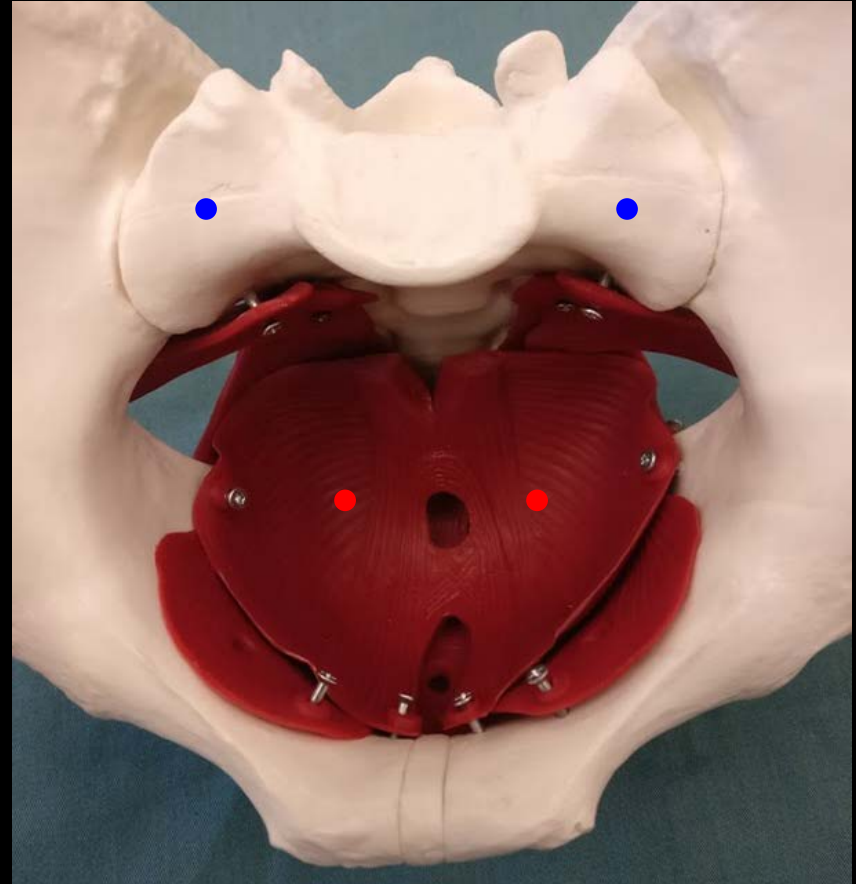
# Pelvic Osteology

Structures in View:

Levator Ani

Sacral Ala

Ischiorectal Fossa (Below  
Levator Ani)



a place of mind  
THE UNIVERSITY OF BRITISH COLUMBIA

Faculty of Medicine

Southern Medical Program

# Male Pelvis

Structures in View:

Pre-Prostatic Urethra

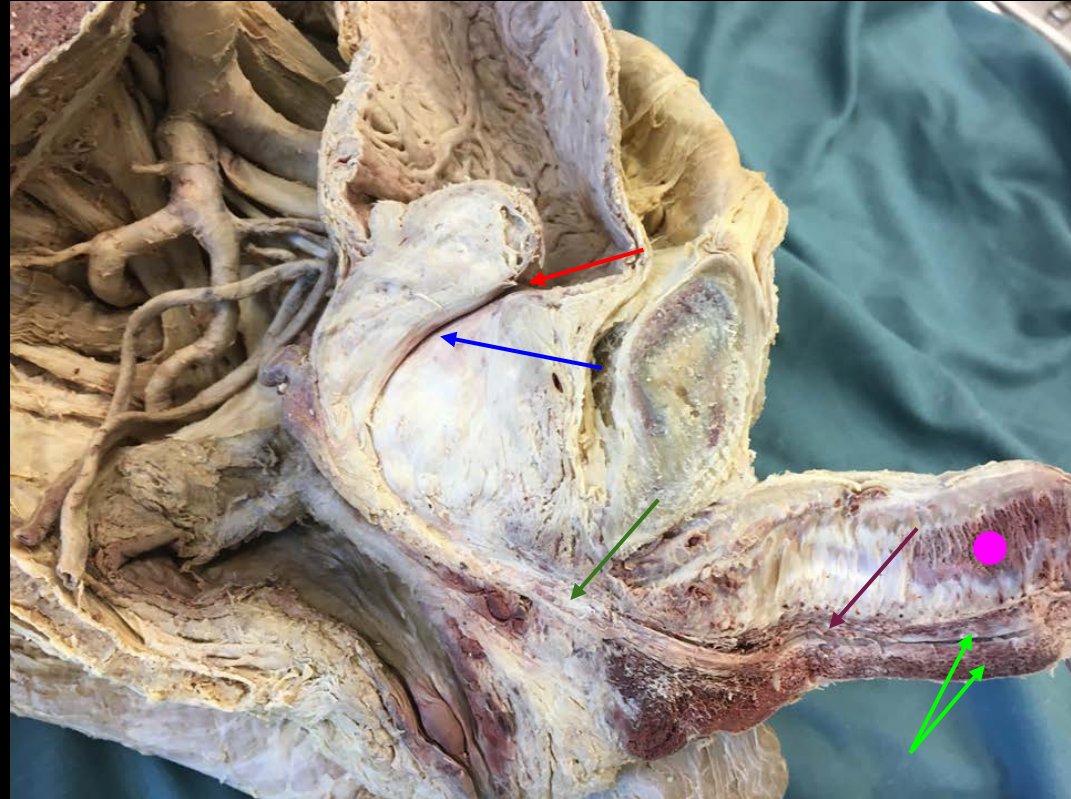
Prostatic Urethra

Membranous Urethra

Spongy Penile Urethra

Corpus Cavernosum

Corpus Spongiosum



a place of mind  
THE UNIVERSITY OF BRITISH COLUMBIA

Faculty of Medicine

Southern Medical Program



# Pelvis

Structures in View:

Sacrum

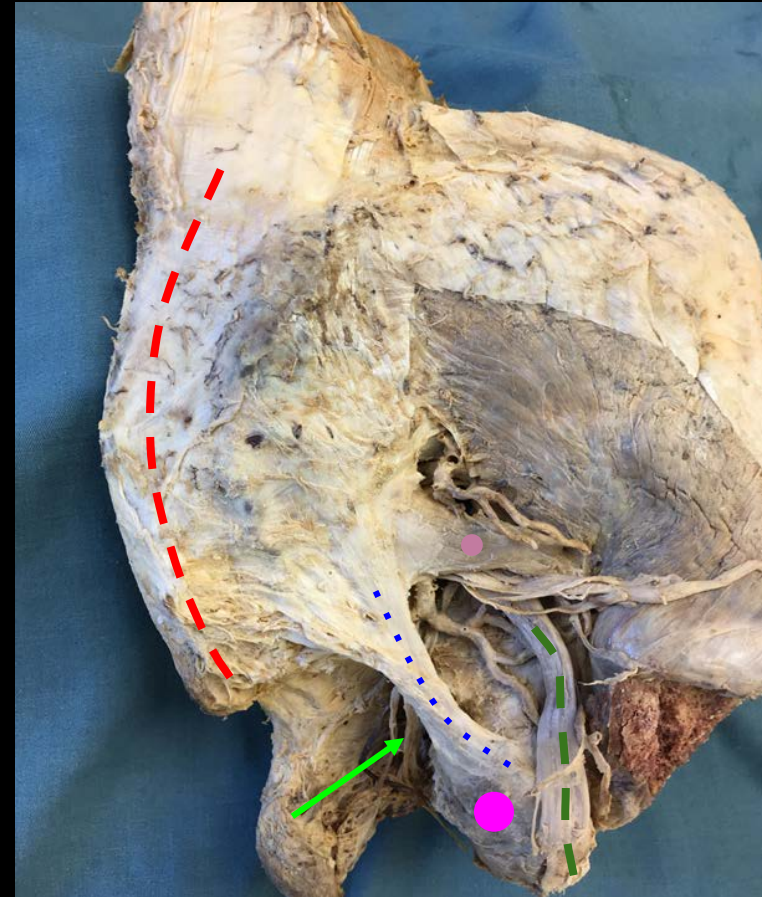
Sacrospinous Ligament

Sciatic Nerve

Piriformis Muscle

Ischial Tuberosity

Pudendal Nerve



a place of mind  
THE UNIVERSITY OF BRITISH COLUMBIA

Faculty of Medicine

Southern Medical Program

# References

- Photo source: <https://nyamcenterforhistory.org/tag/andreas-vesalius/>



a place of mind  
THE UNIVERSITY OF BRITISH COLUMBIA

**Faculty of Medicine**

Southern Medical Program