

DE HVMANI CORPORIS FABRICA LIBER I. 163
HVMANI COR-
SIMPL COMPACTO.
EX FACIE EXPRES.
PORIS OSSIVM
RVM ANTERIORI
SID.



MEDD 412 ANATOMY



KURT MCBURNEY, ASSOCIATE TEACHING PROFESSOR - IMP
NICHOLAS BYERS - SMP
PETER BAUMEISTER - SMP



a place of mind
THE UNIVERSITY OF BRITISH COLUMBIA

Faculty of Medicine

Southern Medical Program

Proof of Permission for Cadaveric Photos



Island Medical Program

The University of British Columbia
Faculty of Medicine MD
Undergraduate Program
delivered in collaboration with
the University of Victoria

Kurt McBurney
Associate Teaching Professor
Island Medical Program Division of Medical Sciences
University of British Columbia and University of Victoria
mcburnev@ubc.ca
250-472-5536 (office)
250-418-1542 (cell)

To Whom It May Concern:

During 6 week FLEX cycle of April/May 2018, Peter Baumeister and Nick Byers completed a dissection/learning resource project here at the Island Medical Program. They completed dissections of the lower limb corresponding to the upcoming fall gross anatomy laboratories.

As part of this project they took photographs of their dissections with the purpose of creating digital index cards which will help students in future labs with these lower limb dissections. Long before they began the project they asked for, and received, my permission to take and subsequently use the photos to create the digital index cards.

As a final check—as protection for themselves, their work and my responsibility for cadaveric donations—I will vet the final versions of the digital index cards to ensure there are no concerns regarding the photographs and the cadaveric material.

Thank you,

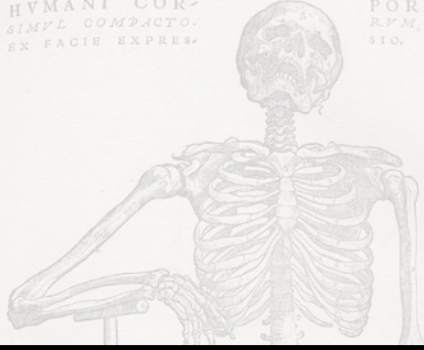
Kurt McBurney



a place of mind
THE UNIVERSITY OF BRITISH COLUMBIA

Faculty of Medicine
Southern Medical Program

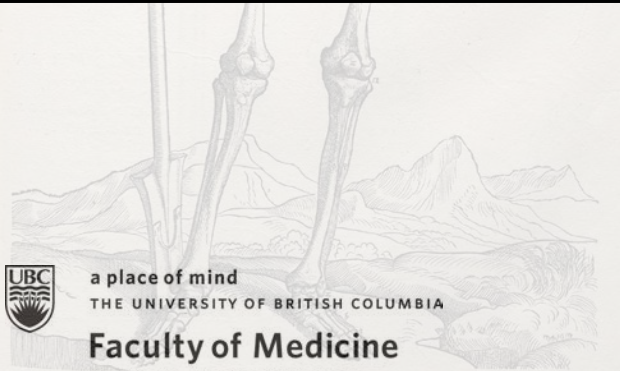
DE HVMANI CORPORIS FABRICA LIBER I. 163
HVMANI COR-
SIMVL COMPACTO.
EX FACIE EXPRES.
PORIS OSSIVM
RPN ANTERIORI
SID.



LABORATORY 1



INTRACRANIAL COMPARTMENTS



a place of mind
THE UNIVERSITY OF BRITISH COLUMBIA

Faculty of Medicine

Southern Medical Program

INDEX

Anterior Cranial Fossae
Arachnoid Granulations
(Resorption Of CSF)
Arachnoid Mater
Cavernous Sinus
Cerebral Arterial Circle (Of Willis)

Confluence Of Sinuses
Dura Mater
Falx Cerebri
Inferior Sagittal Sinus
Internal Carotid Artery
Middle Cranial Fossae
Middle Meningeal Artery
Pia Mater

Scalp
Sigmoid Sinus
Straight Sinus (Great Cerebral Vein)
Subarachnoid Space
Superior Sagittal Sinus
Tentorium Cerebelli
Transverse Sinus
Vertebral Artery



a place of mind
THE UNIVERSITY OF BRITISH COLUMBIA

Faculty of Medicine

Southern Medical Program

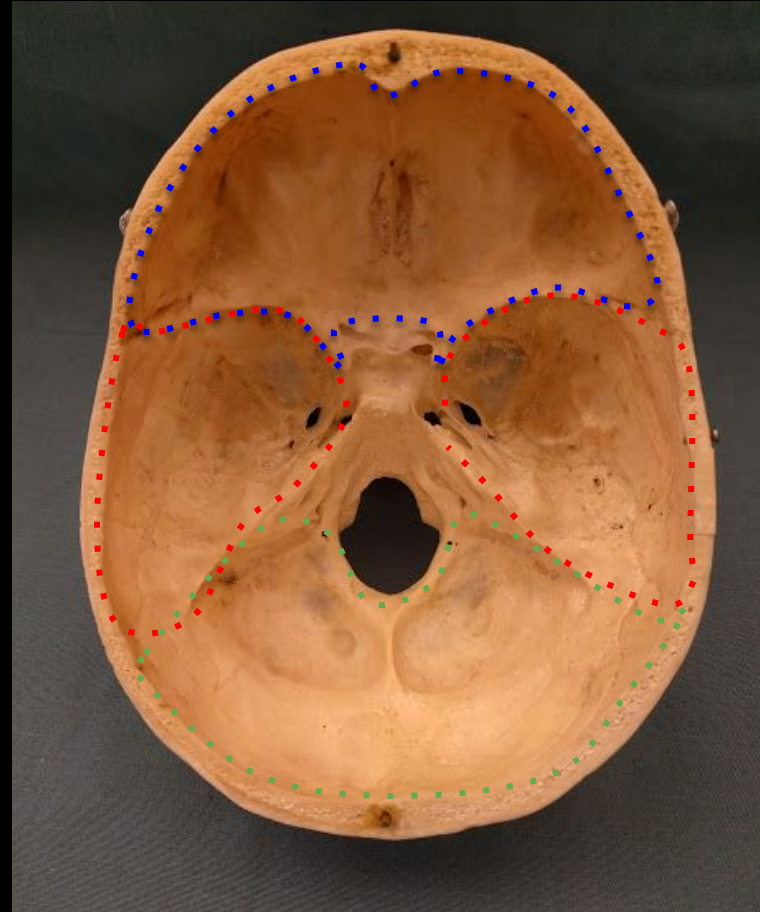
Cranial Osteology

Structures in View:

Anterior Cranial Fossae

Middle Cranial Fossae

Posterior Cranial Fossae



a place of mind
THE UNIVERSITY OF BRITISH COLUMBIA

Faculty of Medicine

Southern Medical Program

Cerebral Meninges

Structures in View:

Falx Cerebri

Tentorium Cerebelli

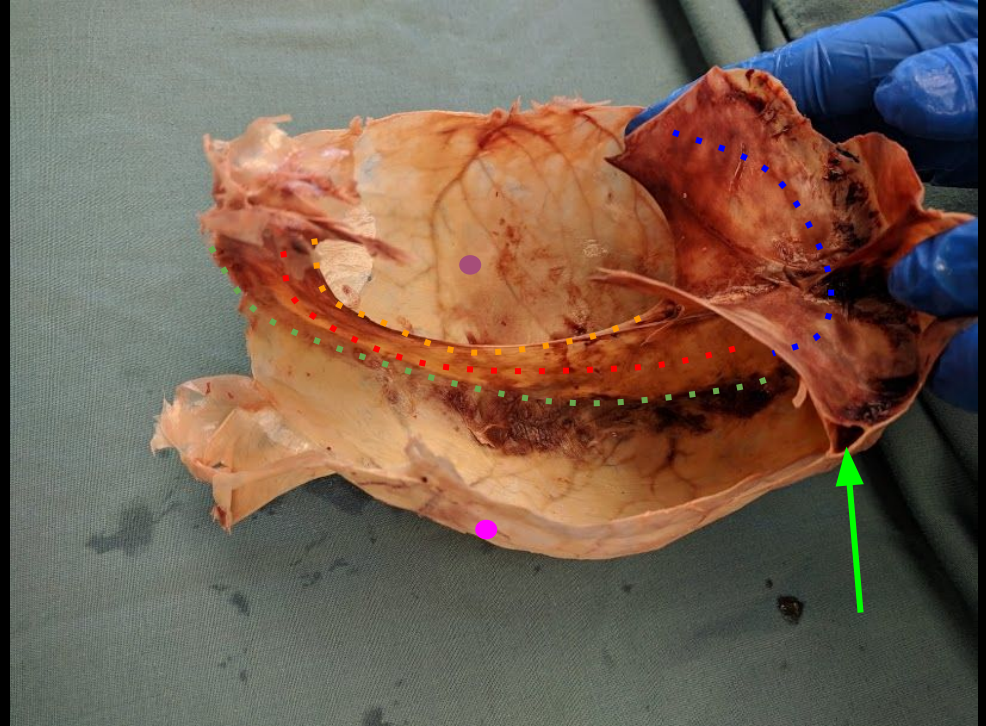
Superior Sagittal Sinus

Arachnoid Mater

Inferior Sagittal Sinus

Dura Mater

Transverse Sinus



a place of mind
THE UNIVERSITY OF BRITISH COLUMBIA

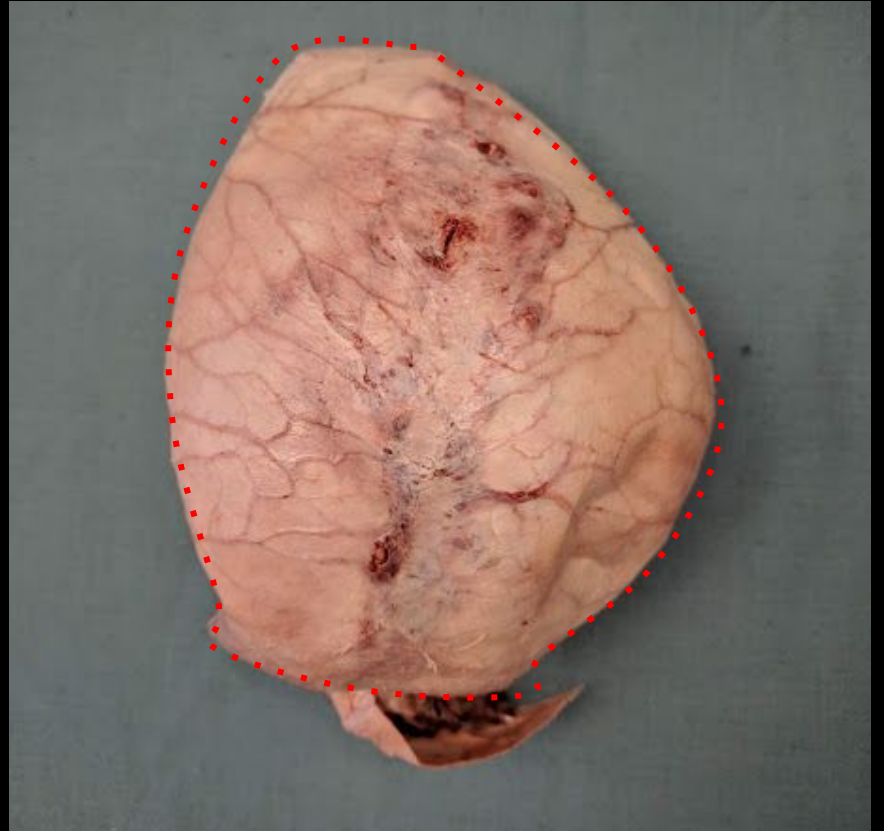
Faculty of Medicine

Southern Medical Program

Cerebral Meninges

Structures in View:

Superficial Meninges (Dura Mater)



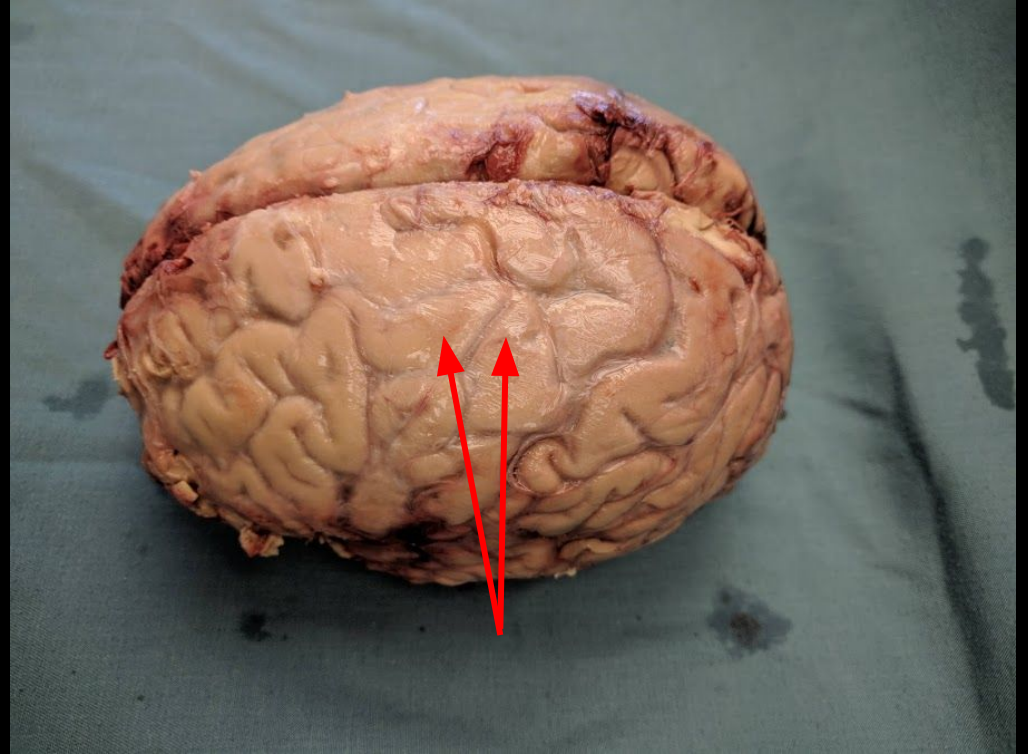
a place of mind
THE UNIVERSITY OF BRITISH COLUMBIA

Faculty of Medicine
Southern Medical Program

Cerebral Meninges

Structures in View:

Arachnoid Mater



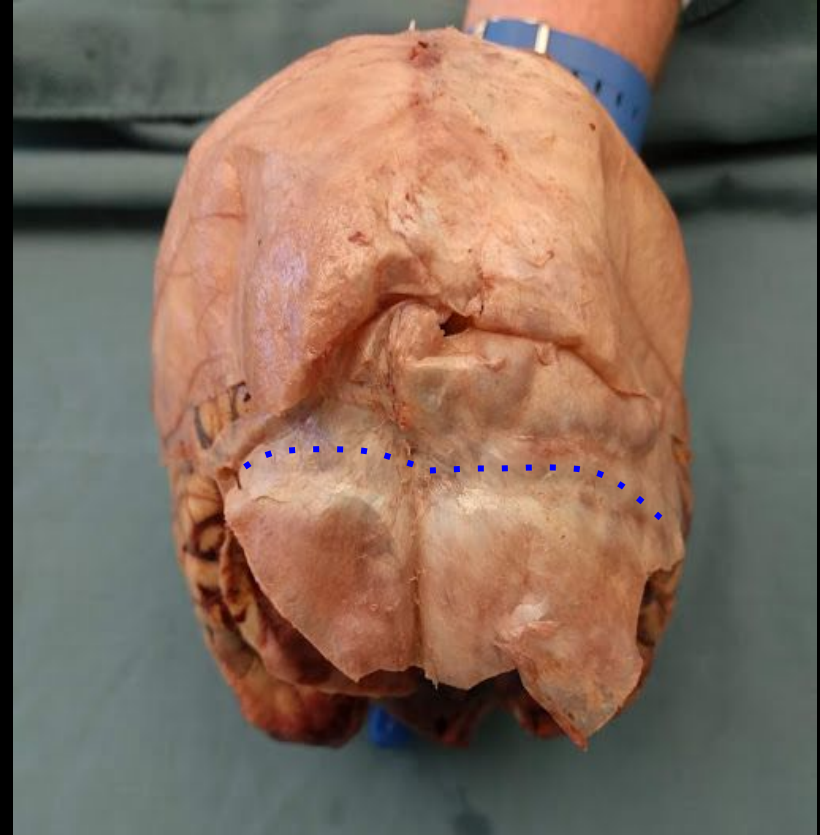
a place of mind
THE UNIVERSITY OF BRITISH COLUMBIA

Faculty of Medicine
Southern Medical Program

Cerebral Meninges

Structures in View:

Transverse Sinuses



a place of mind
THE UNIVERSITY OF BRITISH COLUMBIA

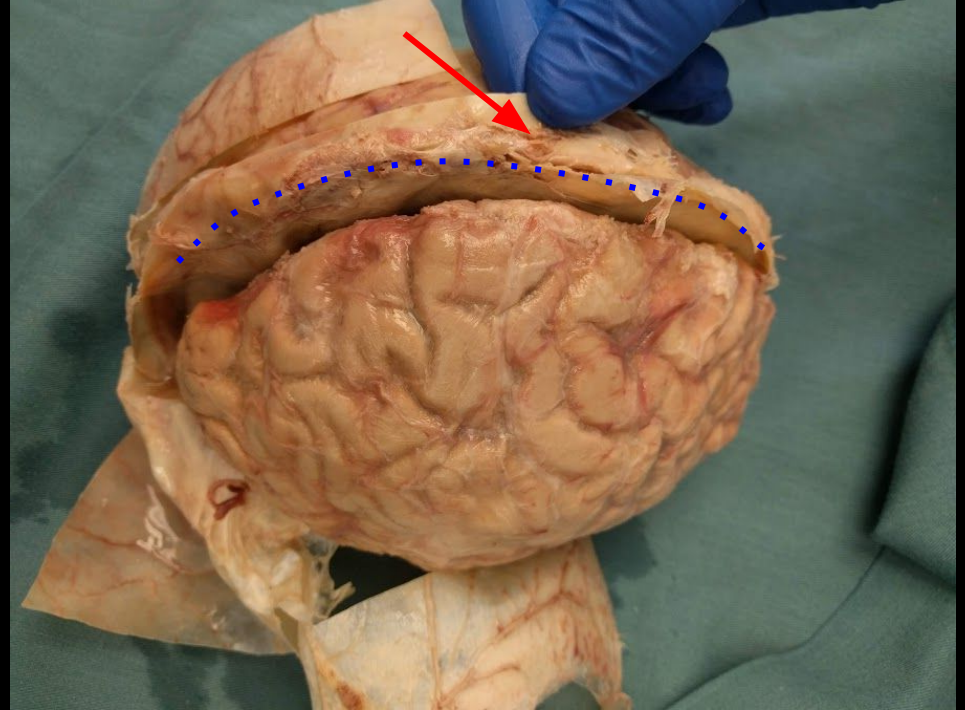
Faculty of Medicine

Southern Medical Program

Cerebral Meninges

Structures in View:

Arachnoid Granulations
Superior Sagittal Sinus



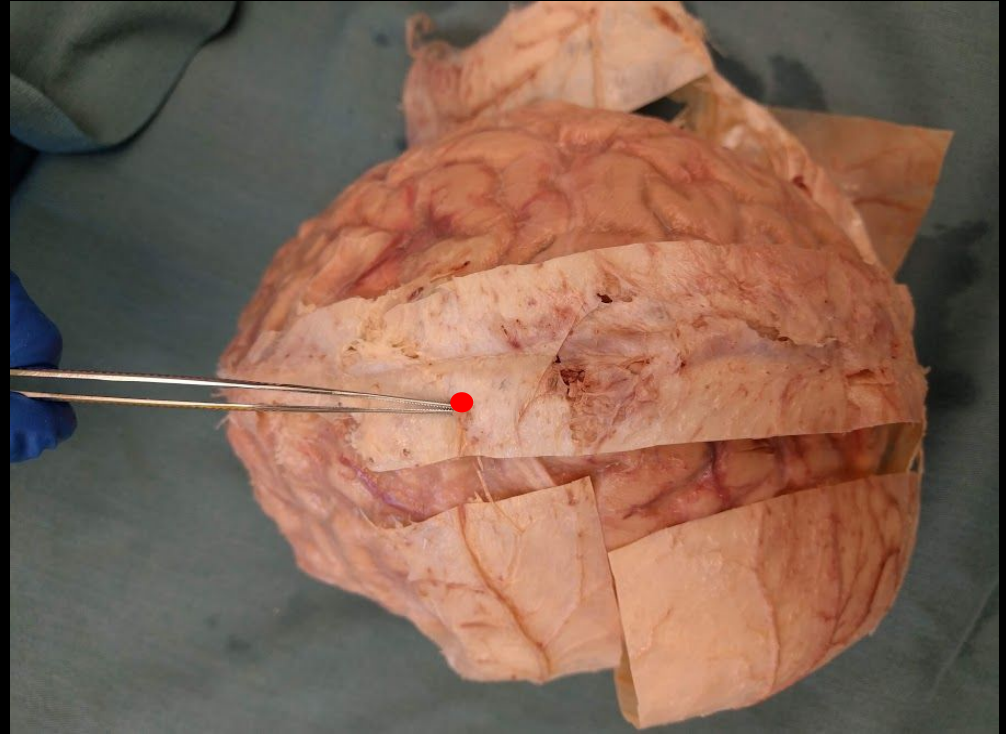
a place of mind
THE UNIVERSITY OF BRITISH COLUMBIA

Faculty of Medicine
Southern Medical Program

Cerebral Meninges

Structures in View:

Arachnoid Granulations



a place of mind
THE UNIVERSITY OF BRITISH COLUMBIA

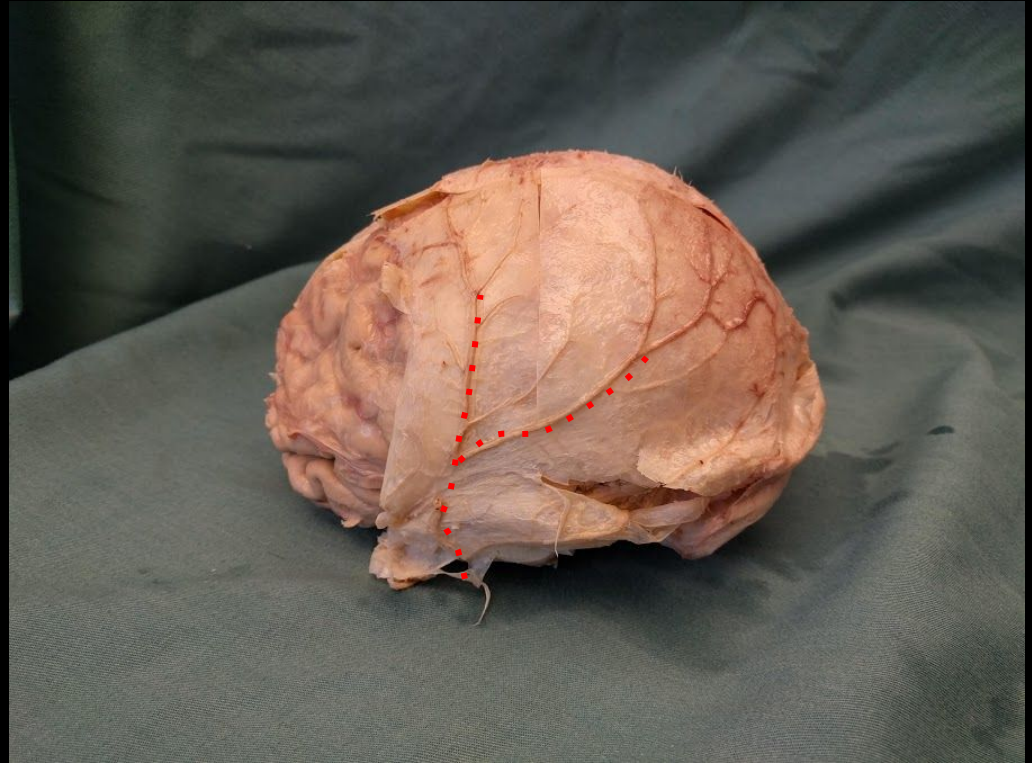
Faculty of Medicine

Southern Medical Program

Cerebral Meninges

Structures in View:

Middle Meningeal Artery (and branches)



a place of mind
THE UNIVERSITY OF BRITISH COLUMBIA

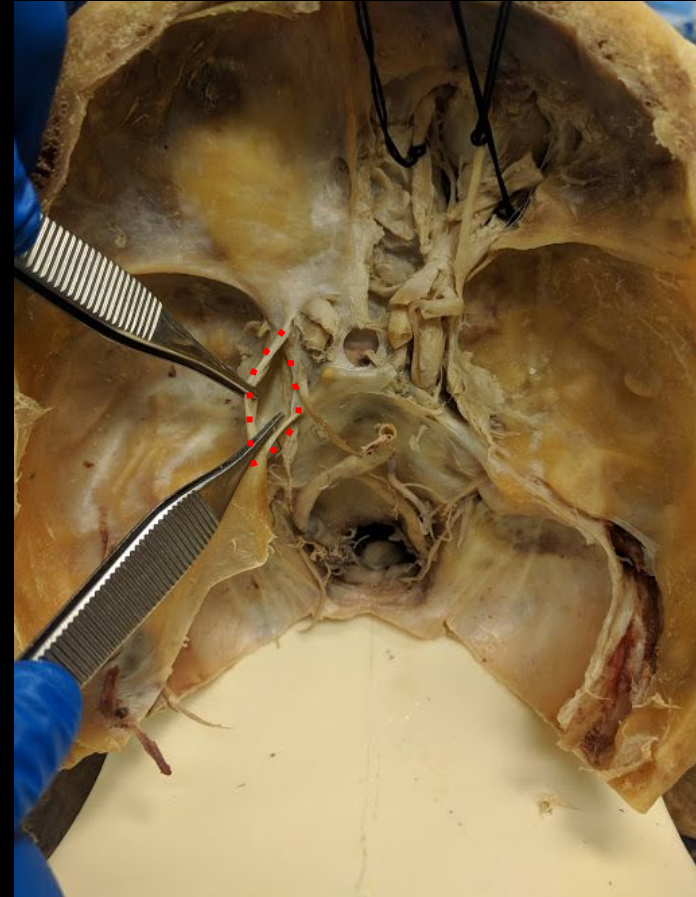
Faculty of Medicine

Southern Medical Program

Cavernous Sinus

Structures in View:

Cavernous Sinus



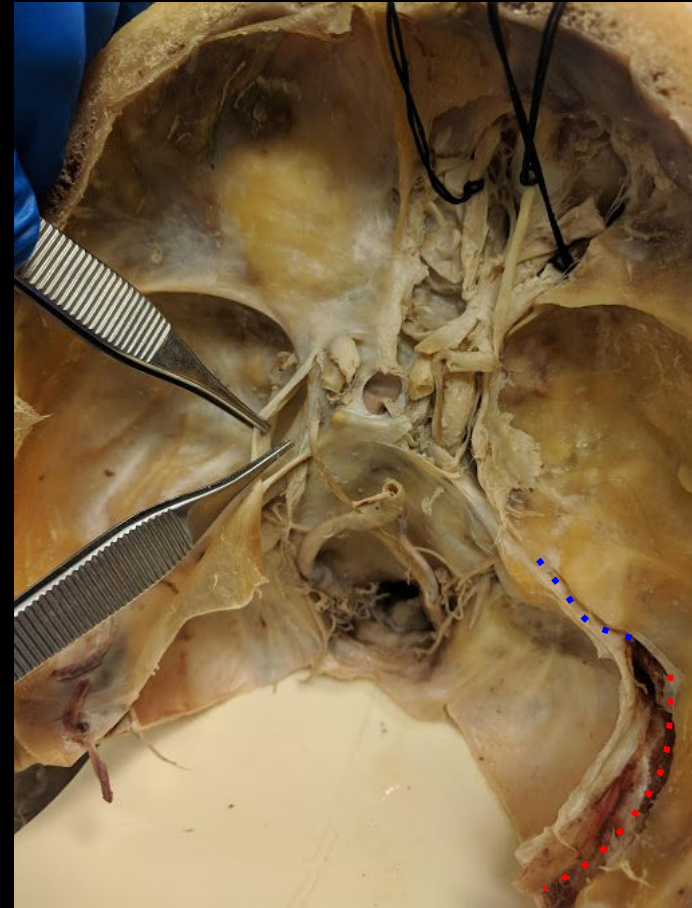
a place of mind
THE UNIVERSITY OF BRITISH COLUMBIA

Faculty of Medicine
Southern Medical Program

Cerebral Sinuses

Structures in View:

Transverse Sinus
Sigmoid Sinus



a place of mind
THE UNIVERSITY OF BRITISH COLUMBIA

Faculty of Medicine
Southern Medical Program

Cerebral Circulation

Structures in View:

Optic Chiasm

Internal Carotid Arteries

Posterior Communicating Arteries

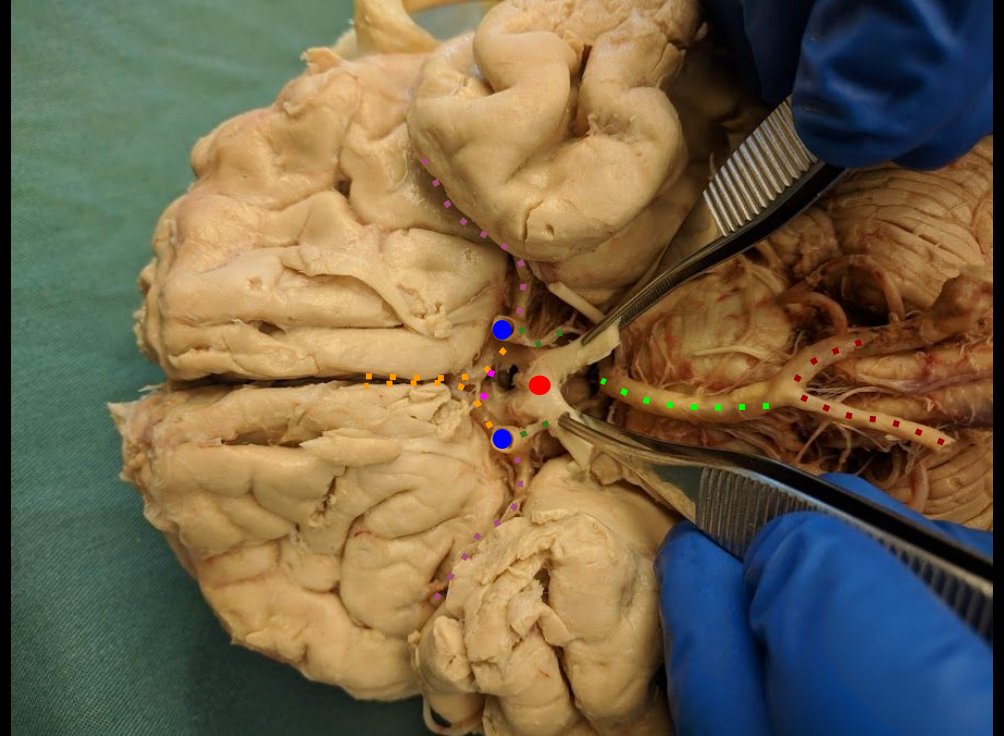
Middle Cerebral Arteries

Anterior Cerebral Arteries

Anterior Communicating

Basilar Artery

Vertebral Arteries



a place of mind
THE UNIVERSITY OF BRITISH COLUMBIA

Faculty of Medicine

Southern Medical Program

References

- Photo source: <https://nyamcenterforhistory.org/tag/andreas-vesalius/>



a place of mind
THE UNIVERSITY OF BRITISH COLUMBIA

Faculty of Medicine

Southern Medical Program

DE HVMANI CORPORIS FABRICA LIBER I. 163
HVMANI COR-
SIMVL COMPACTO.
EX FACIE EXPRES.
PORIS OSSIVM
RVM ANTERIORI
SID.



MEDD 412 ANATOMY



KURT MCBURNEY, ASSOCIATE TEACHING PROFESSOR - IMP
NICHOLAS BYERS - SMP
PETER BAUMEISTER - SMP



a place of mind
THE UNIVERSITY OF BRITISH COLUMBIA

Faculty of Medicine

Southern Medical Program

Proof of Permission for Cadaveric Photos



Island Medical Program

The University of British Columbia
Faculty of Medicine MD
Undergraduate Program
delivered in collaboration with
the University of Victoria

Kurt McBurney
Associate Teaching Professor
Island Medical Program Division of Medical Sciences
University of British Columbia and University of Victoria
mcburnev@ubc.ca
250-472-5536 (office)
250-418-1542 (cell)

To Whom It May Concern:

During 6 week FLEX cycle of April/May 2018, Peter Baumeister and Nick Byers completed a dissection/learning resource project here at the Island Medical Program. They completed dissections of the lower limb corresponding to the upcoming fall gross anatomy laboratories.

As part of this project they took photographs of their dissections with the purpose of creating digital index cards which will help students in future labs with these lower limb dissections. Long before they began the project they asked for, and received, my permission to take and subsequently use the photos to create the digital index cards.

As a final check—as protection for themselves, their work and my responsibility for cadaveric donations—I will vet the final versions of the digital index cards to ensure there are no concerns regarding the photographs and the cadaveric material.

Thank you,

Kurt McBurney



a place of mind
THE UNIVERSITY OF BRITISH COLUMBIA

Faculty of Medicine
Southern Medical Program

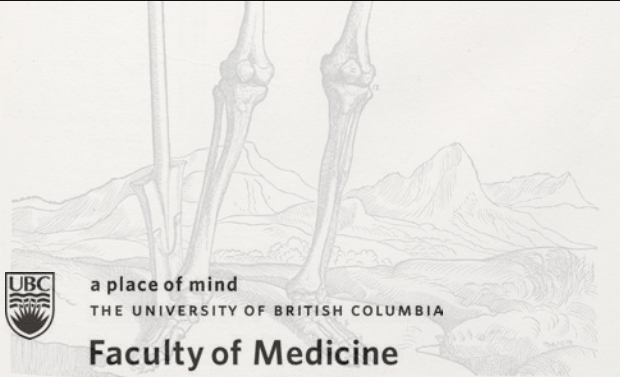
DE HVMANI CORPORIS FABRICA LIBER I. 163
HVMANI COR-
SIMVL COMPACTO.
EX FACIE EXPRES.
PORIS OSSIVM
RVM ANTERIORI
SIO.



LABORATORY 2



SOMATIC PLEXUSES: THE BRACHIAL PLEXUS



a place of mind
THE UNIVERSITY OF BRITISH COLUMBIA

Faculty of Medicine

Southern Medical Program

INDEX

Anatomical Neck of Humerus
Anterior/Posterior Humeral
Circumflex Arteries
Axillary Artery
Axillary Nerve
Axillary Vein
Brachial Artery
Cephalic Vein
Coracobrachialis
Coracoid Process
Deltoid Tuberosity
Glenoid Cavity

Greater Tubercle of Humerus
Head of Humerus
Infraglenoid Tubercle
Intertubercular Sulcus
Latissimus Dorsi
Lesser Tubercle of Humerus
Long and Short Heads of Biceps
Brachii
Long Head of Triceps
Long Thoracic Nerve
Median Nerve
Musculocutaneous Nerve
Profunda Brachii Artery

Quadrangular Space (Teres Minor, Long
and Short Head of Triceps)
Radial Nerve
Subclavian Vein
Subscapular Fossa
Subscapularis
Supraglenoid Tubercle
Suprascapular Notch
Surgical Neck of Humerus
Teres Major
Triangular Space (Teres Minor, Teres
Major, Long Head of Triceps)
Ulnar Nerve



a place of mind
THE UNIVERSITY OF BRITISH COLUMBIA

Faculty of Medicine
Southern Medical Program

Osteology of Humerus

Structures in View:

Deltoid Tuberosity

Greater Tubercle

Lesser Tubercle

Intertubercular Sulcus (Bicipital Groove)



a place of mind
THE UNIVERSITY OF BRITISH COLUMBIA

Faculty of Medicine

Southern Medical Program

Osteology of Humerus

Structures in View:

Radial Sulcus

Surgical Neck

Anatomical Neck

Greater Tubercle

Head of Humerus



a place of mind
THE UNIVERSITY OF BRITISH COLUMBIA

Faculty of Medicine

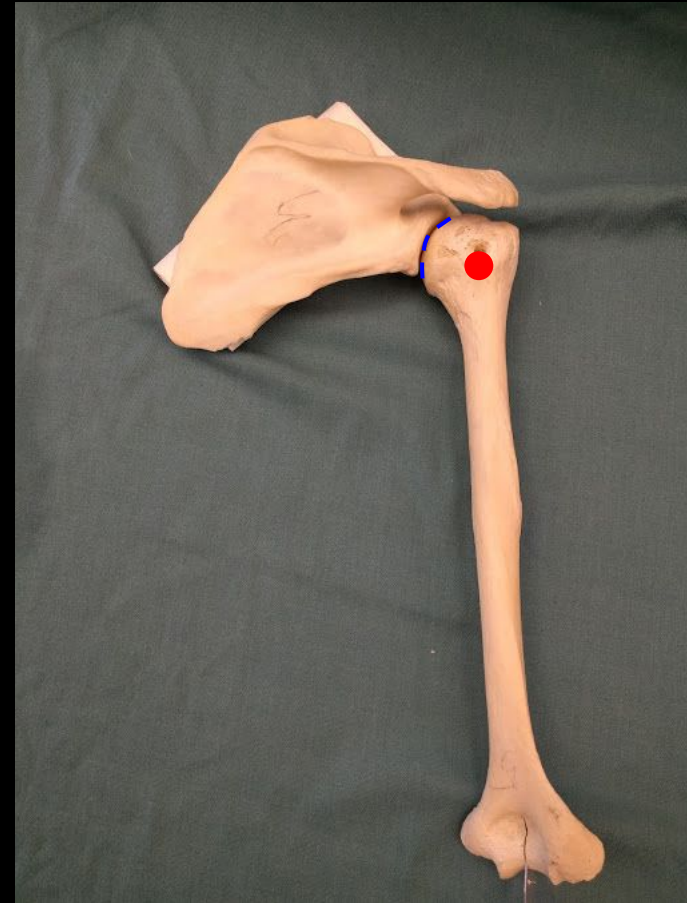
Southern Medical Program

Osteology of Shoulder

Structures in View:

Humerus

Glenoid Cavity



a place of mind
THE UNIVERSITY OF BRITISH COLUMBIA

Faculty of Medicine

Southern Medical Program

Osteology of Shoulder

Structures in View:

Subscapular Fossa

Coracoid Process

Suprascapular Notch



a place of mind
THE UNIVERSITY OF BRITISH COLUMBIA

Faculty of Medicine

Southern Medical Program

Osteology of Scapula

Structures in View:

Supraglenoid Tubercle

Infraglenoid Tubercle

Coracoid Process



a place of mind
THE UNIVERSITY OF BRITISH COLUMBIA

Faculty of Medicine

Southern Medical Program

Brachial Plexus

Structures in View:

Musculocutaneous Nerve

Median Nerve

Axillary Nerve



a place of mind
THE UNIVERSITY OF BRITISH COLUMBIA

Faculty of Medicine

Southern Medical Program

Brachial Plexus

Structures in View:

Axillary Artery

Median Nerve

Medial Cord of Brachial Plexus

Axillary Vein

Lateral Cord of Brachial Plexus



a place of mind
THE UNIVERSITY OF BRITISH COLUMBIA

Faculty of Medicine

Southern Medical Program

Brachial Plexus

Structures in View:

Ulnar Nerve



a place of mind
THE UNIVERSITY OF BRITISH COLUMBIA

Faculty of Medicine
Southern Medical Program

Brachial Plexus

Structures in View:

Radial Nerve
Posterior Cord



a place of mind
THE UNIVERSITY OF BRITISH COLUMBIA

Faculty of Medicine
Southern Medical Program

Brachial Plexus

Structures in View:

Axillary Artery

Profunda Brachii Artery

Brachial Artery

Radial Nerve



a place of mind
THE UNIVERSITY OF BRITISH COLUMBIA

Faculty of Medicine

Southern Medical Program

Brachial Plexus

Structures in View:

Anterior Humeral Circumflex Artery
Posterior Humeral Circumflex Artery
Axillary Artery



a place of mind
THE UNIVERSITY OF BRITISH COLUMBIA

Faculty of Medicine

Southern Medical Program

Left Shoulder

Structures in View:

Pectoralis Major Muscle

Cephalic Vein

Deltoid Muscle



a place of mind
THE UNIVERSITY OF BRITISH COLUMBIA

Faculty of Medicine

Southern Medical Program

Anterior Shoulder

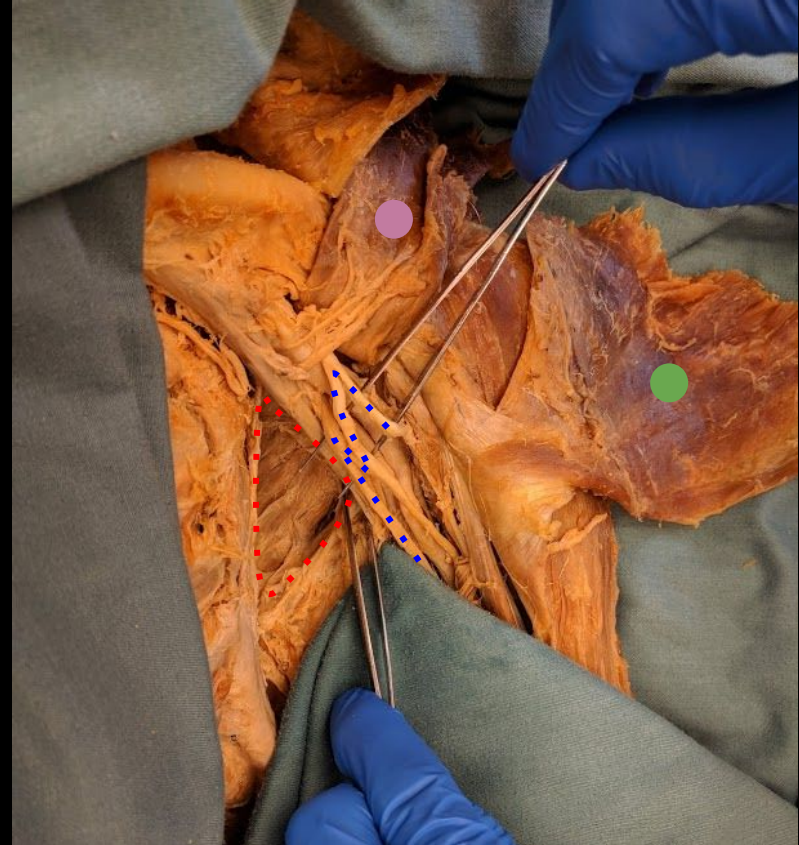
Structures in View:

Subscapularis Muscle

Brachial Plexus

Pectoralis Major Muscle

Pectoralis Minor Muscle



a place of mind
THE UNIVERSITY OF BRITISH COLUMBIA

Faculty of Medicine

Southern Medical Program

Anterior Shoulder

Structures in View:

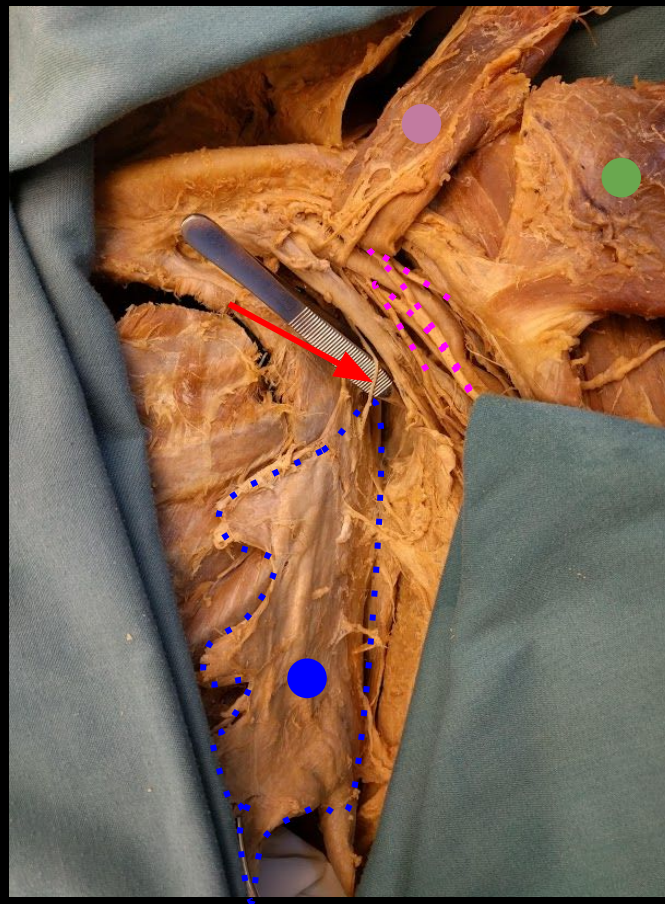
Long Thoracic Nerve

Serratus Anterior Muscle

Pectoralis Major Muscle

Pectoralis Minor Muscle

Brachial Plexus



a place of mind
THE UNIVERSITY OF BRITISH COLUMBIA

Faculty of Medicine

Southern Medical Program

Anterior Shoulder

Structures in View:

Biceps Brachii Long Head Muscle

Biceps Brachii Short Head Muscle

Cephalic Vein

Deltoid Muscle

Pectoralis Major Muscle



a place of mind
THE UNIVERSITY OF BRITISH COLUMBIA

Faculty of Medicine

Southern Medical Program

Anterior Shoulder

Structures in View:

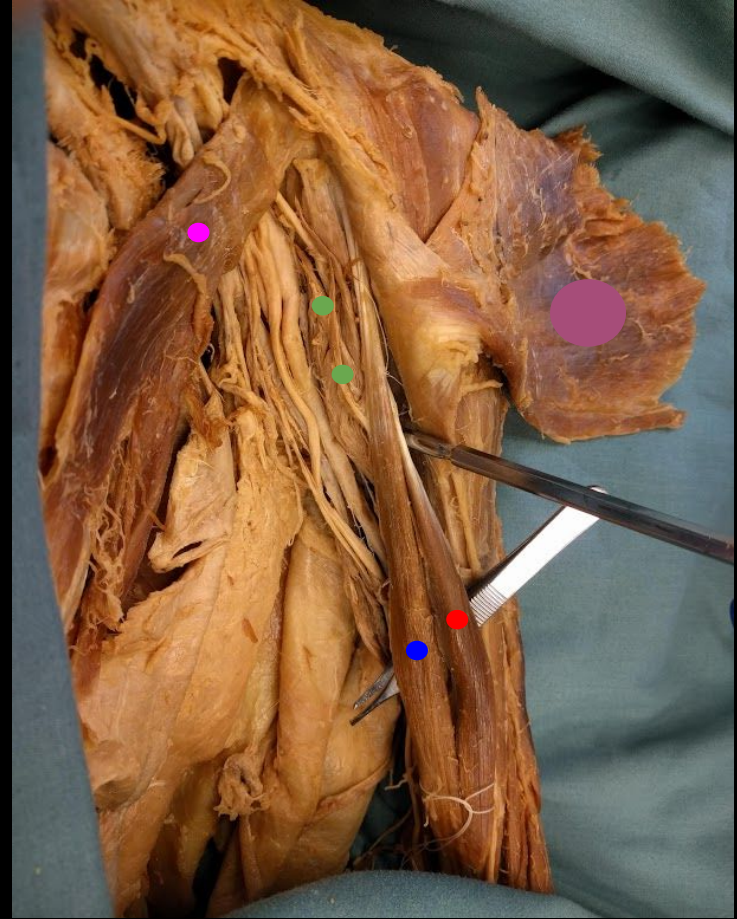
Long Head of Biceps Brachii Muscle

Short head of Biceps Brachii Muscle

Coracobrachialis Muscle

Pectoralis Major Muscle (Reflected)

Pectoralis Minor Muscle



a place of mind
THE UNIVERSITY OF BRITISH COLUMBIA

Faculty of Medicine

Southern Medical Program

Posterior Shoulder

Structures in View:

Infraspinatus Muscle

Teres Minor Muscle

Teres Major Muscle

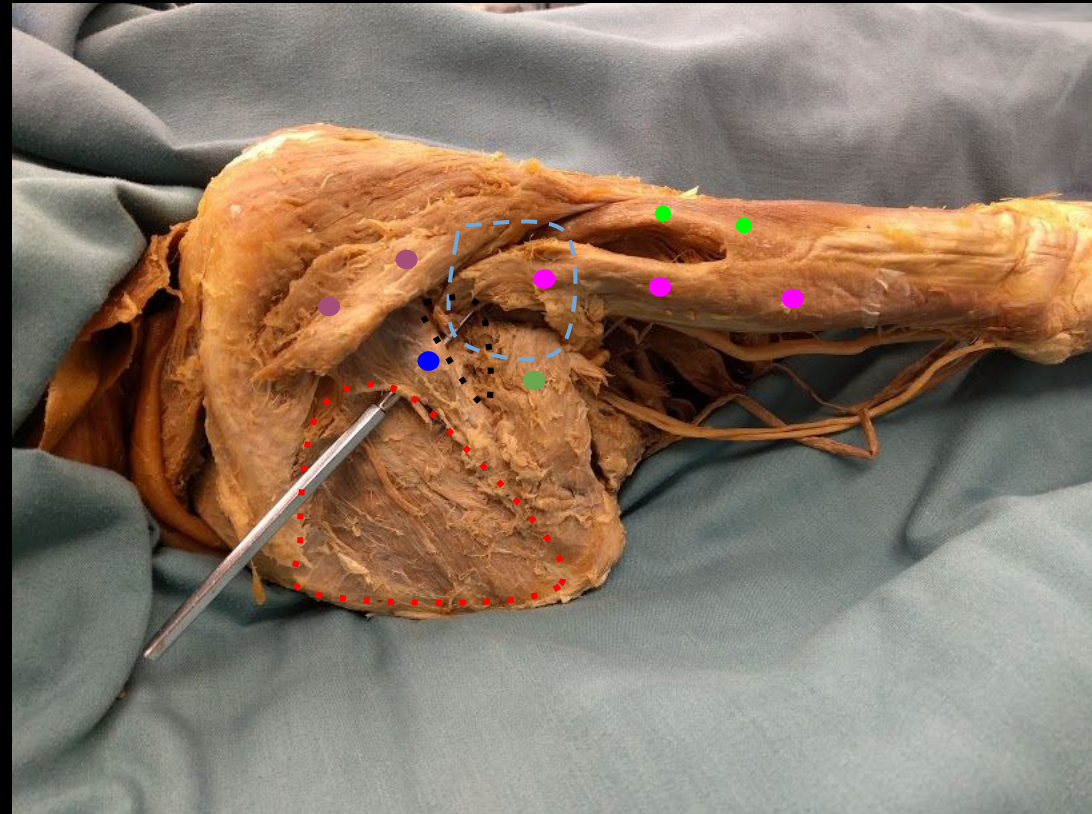
Posterior Deltoid Muscle

Long Head of Triceps Brachii Muscle

Lateral Head of Triceps Brachii Muscle

Quadrangular Space

Triangular Space



a place of mind
THE UNIVERSITY OF BRITISH COLUMBIA

Faculty of Medicine

Southern Medical Program

References

- Photo source: <https://nyamcenterforhistory.org/tag/andreas-vesalius/>



a place of mind
THE UNIVERSITY OF BRITISH COLUMBIA

Faculty of Medicine

Southern Medical Program

DE HVMANI CORPORIS FABRICA LIBER I. 163
HVMANI COR-
SIMPL COMPACTO.
EX FACIE EXPRES.
PORIS OSSIVM
RVM ANTERIORI
SID.



MEDD 412 ANATOMY



KURT MCBURNEY, ASSOCIATE TEACHING PROFESSOR - IMP
NICHOLAS BYERS - SMP
PETER BAUMEISTER - SMP



a place of mind
THE UNIVERSITY OF BRITISH COLUMBIA

Faculty of Medicine

Southern Medical Program

Proof of Permission for Cadaveric Photos



Island Medical Program

The University of British Columbia
Faculty of Medicine MD
Undergraduate Program
delivered in collaboration with
the University of Victoria

Kurt McBurney
Associate Teaching Professor
Island Medical Program Division of Medical Sciences
University of British Columbia and University of Victoria
mcburnev@ubc.ca
250-472-5536 (office)
250-418-1542 (cell)

To Whom It May Concern:

During 6 week FLEX cycle of April/May 2018, Peter Baumeister and Nick Byers completed a dissection/learning resource project here at the Island Medical Program. They completed dissections of the lower limb corresponding to the upcoming fall gross anatomy laboratories.

As part of this project they took photographs of their dissections with the purpose of creating digital index cards which will help students in future labs with these lower limb dissections. Long before they began the project they asked for, and received, my permission to take and subsequently use the photos to create the digital index cards.

As a final check—as protection for themselves, their work and my responsibility for cadaveric donations—I will vet the final versions of the digital index cards to ensure there are no concerns regarding the photographs and the cadaveric material.

Thank you,

Kurt McBurney



a place of mind
THE UNIVERSITY OF BRITISH COLUMBIA

Faculty of Medicine
Southern Medical Program

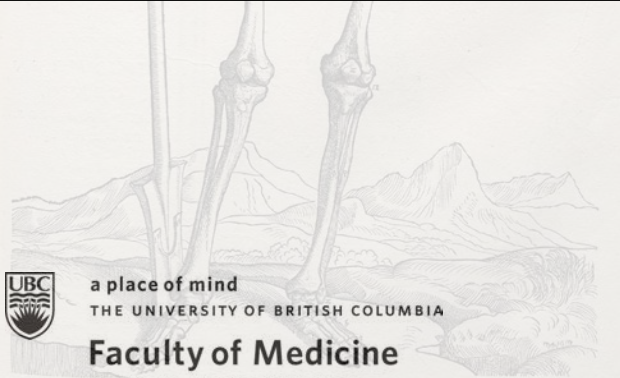
DE HVMANI CORPORIS FABRICA LIBER I. 163
HVMANI COR-
SIMVL COMPACTO.
EX FACIE EXPRES.
PORIS OSSIVM
RVM ANTERIORI
SIO.



LABORATORY 3



THE ORBIT



a place of mind
THE UNIVERSITY OF BRITISH COLUMBIA

Faculty of Medicine

Southern Medical Program

INDEX

Abducens Nerve (VI)
Canaliculi
Lacrimal Sac
Frontal branch of Ophthalmic Nerve (V1)
Inferior Division of Oculomotor Nerve
Inferior Oblique (Inferior Division of III)
Inferior Oblique Muscle
Inferior Rectus (Inferior Division of III)

Inferior Rectus Muscle
Lacrimal branch of Ophthalmic Nerve (V1)
Lacrimal Gland
Lateral Rectus Muscle
Levator Palpebrae Superioris
Long Ciliary Nerves
Medial Rectus Muscle
Medial Rectus Nerve (Inferior Division of III)
Nasociliary Nerve
Infratrochlear Nerve
Nasolacrimal Duct
Oculomotor Nerve (III)

Ophthalmic Artery
Ophthalmic Veins
Optic Nerve (II)
Posterior & Anterior Ethmoidal Nerves
Puncta Lacrimalia/Lacrimal Papilla
Superior Division of Oculomotor Nerve
Superior Oblique Muscle
Superior Rectus Muscle
Supraorbital branch of Frontal Nerve (V1)
Supratrochlear branch of Frontal Nerve (V1)
Trochlear Nerve (IV)



a place of mind
THE UNIVERSITY OF BRITISH COLUMBIA

Faculty of Medicine

Southern Medical Program

Superior Orbit

Structures in View:

Levator Palpebrae Superioris Muscle

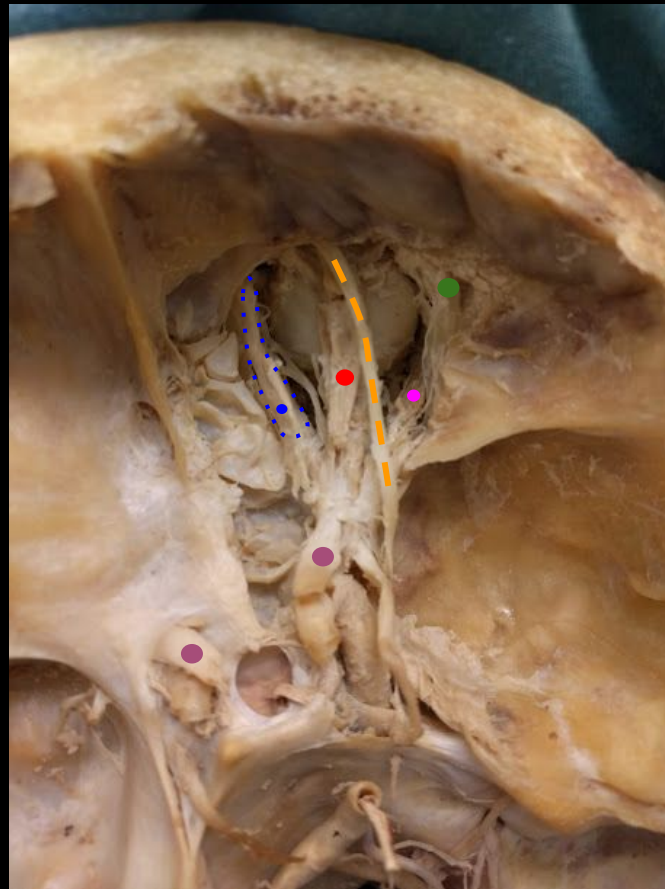
Superior Oblique Muscle

Lacrimal Gland (Removed)

Optic Nerve(s) (II)

Frontal Nerve (V1)

Lateral Rectus Muscle



a place of mind
THE UNIVERSITY OF BRITISH COLUMBIA

Faculty of Medicine

Southern Medical Program

Superior Orbit

Structures in View:

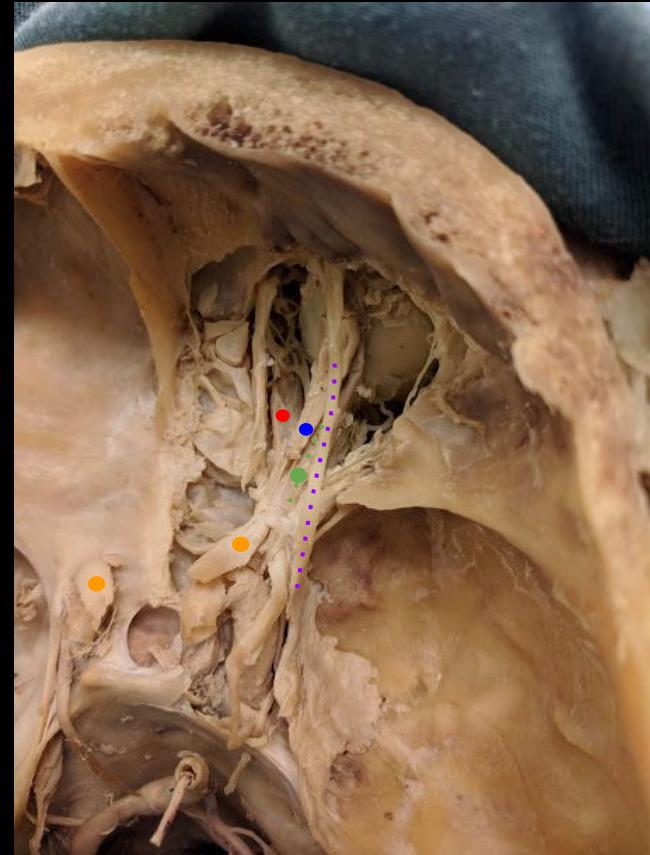
Medial Rectus Muscle

Levator Palpebrae Superioris

Superior Rectus Muscle

Frontal Nerve (V1)

Optic Nerve(s) (II)



a place of mind
THE UNIVERSITY OF BRITISH COLUMBIA

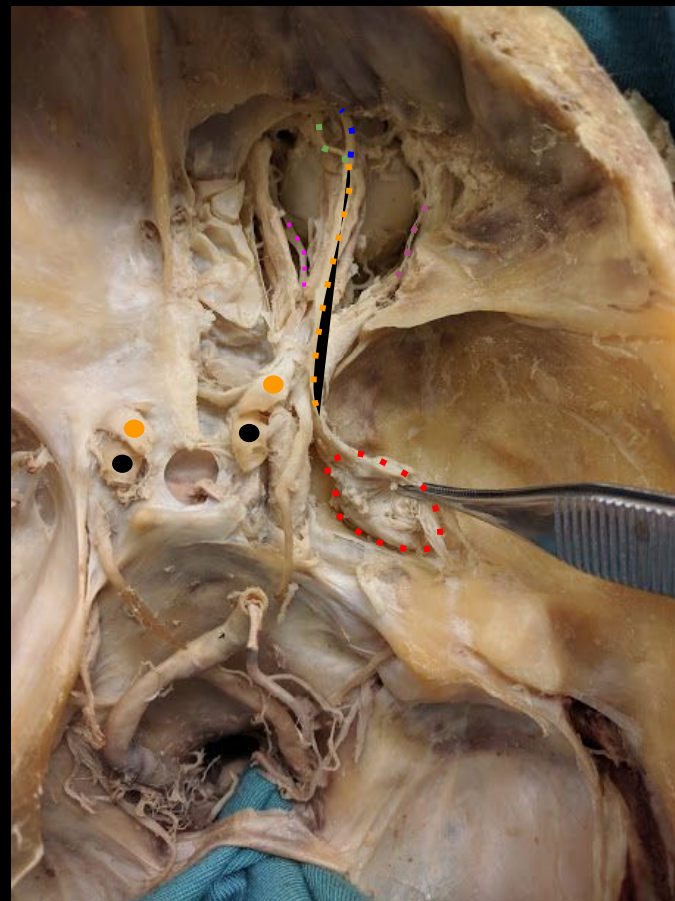
Faculty of Medicine

Southern Medical Program

Superior Orbit

Structures in View:

Ganglion of CN V
Supraorbital Nerve
Supratrochlear Nerve
Lacrimal Nerve
Optic Nerve(s) (II)
Nasociliary Nerve
Internal Carotid Artery
Frontal Nerve



a place of mind
THE UNIVERSITY OF BRITISH COLUMBIA

Faculty of Medicine
Southern Medical Program

Superior Orbit

Structures in View:

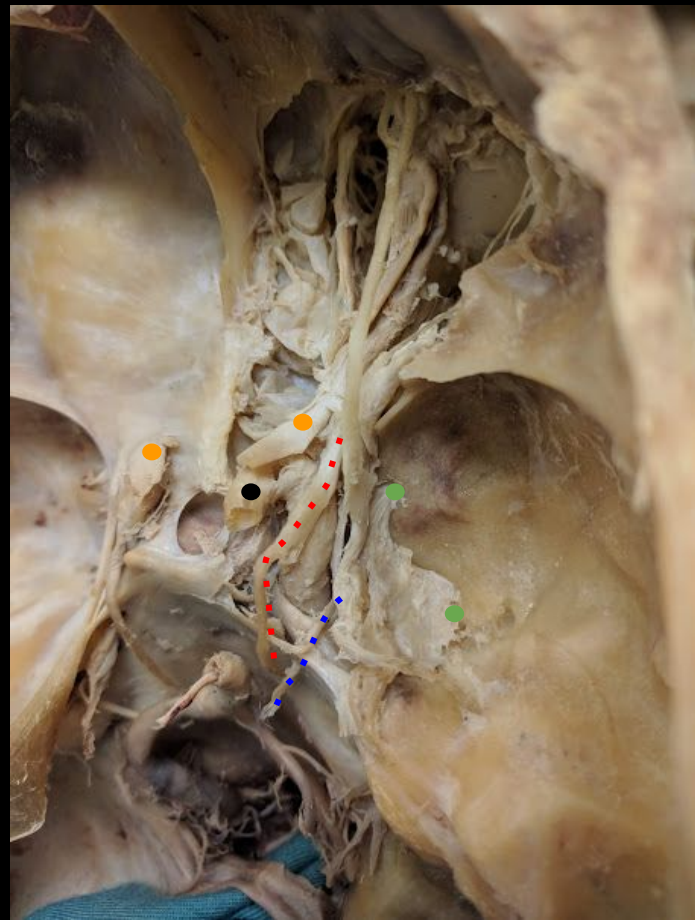
Oculomotor Nerve (III)

Abducens Nerve (VI)

Trigeminal Nerve (V2 & V3)

Optic Nerve(s) (II)

Internal Carotid Artery



a place of mind
THE UNIVERSITY OF BRITISH COLUMBIA

Faculty of Medicine

Southern Medical Program

References

- Photo source: <https://nyamcenterforhistory.org/tag/andreas-vesalius/>



a place of mind
THE UNIVERSITY OF BRITISH COLUMBIA

Faculty of Medicine

Southern Medical Program

DE HVMANI CORPORIS FABRICA LIBER I. 163
HVMANI COR-
SIMVL COMPACTO.
EX FACIE EXPRES.
PORIS OSSIVM
RVM ANTERIORI
SID.



MEDD 412 ANATOMY



KURT MCBURNEY, ASSOCIATE TEACHING PROFESSOR - IMP
NICHOLAS BYERS - SMP
PETER BAUMEISTER - SMP



a place of mind
THE UNIVERSITY OF BRITISH COLUMBIA

Faculty of Medicine

Southern Medical Program

Proof of Permission for Cadaveric Photos



Island Medical Program

The University of British Columbia
Faculty of Medicine MD
Undergraduate Program
delivered in collaboration with
the University of Victoria

Kurt McBurney
Associate Teaching Professor
Island Medical Program Division of Medical Sciences
University of British Columbia and University of Victoria
mcburnev@ubc.ca
250-472-5536 (office)
250-418-1542 (cell)

To Whom It May Concern:

During 6 week FLEX cycle of April/May 2018, Peter Baumeister and Nick Byers completed a dissection/learning resource project here at the Island Medical Program. They completed dissections of the lower limb corresponding to the upcoming fall gross anatomy laboratories.

As part of this project they took photographs of their dissections with the purpose of creating digital index cards which will help students in future labs with these lower limb dissections. Long before they began the project they asked for, and received, my permission to take and subsequently use the photos to create the digital index cards.

As a final check—as protection for themselves, their work and my responsibility for cadaveric donations—I will vet the final versions of the digital index cards to ensure there are no concerns regarding the photographs and the cadaveric material.

Thank you,

Kurt McBurney



a place of mind
THE UNIVERSITY OF BRITISH COLUMBIA

Faculty of Medicine
Southern Medical Program

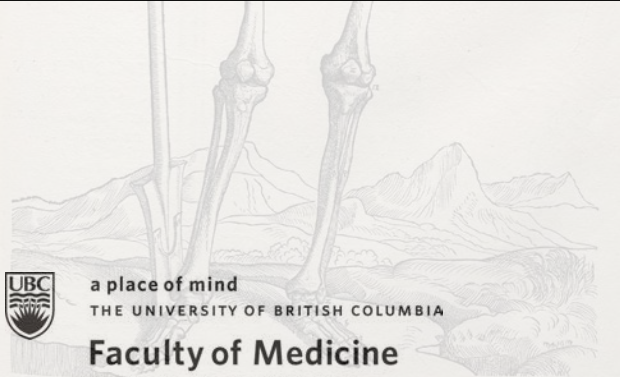
DE HVMANI CORPORIS FABRICA LIBER I. 163
HVMANI COR-
SIMVL COMPACTO.
EX FACIE EXPRES.
PORIS OSSIVM
RPN ANTERIORI
SIO.



LABORATORY 4



ANTERIOR TRIANGLE OF NECK, PHARYNX, AND LARYNX



a place of mind

THE UNIVERSITY OF BRITISH COLUMBIA

Faculty of Medicine

Southern Medical Program

INDEX

Anterior/Posterior Bellies of
Digastric (Suprahyoid)
Common Carotid Artery
External Carotid Artery
Facial Artery
Geniohyoid (Suprahyoid)
Hypoglossal Nerve (XII)
Inferior Root of Ansa Cervicalis
(C2-3)
Infrahyoid

Internal and External Laryngeal
Branches
Internal Carotid Artery
Internal Jugular Vein
Lingual Artery
Mylohyoid (Suprahyoid)
Occipital Artery
Omohyoid (Strap Muscle)
Sternocleidomastoid
Sternohyoid (Strap Muscle)
Sternothyroid (Strap Muscle)

Stylohyoid (Suprahyoid)
Submandibular Gland
Superior Laryngeal Nerve
Superior Root of Ansa Cervicalis (C1)
Superior Thyroid Artery
Thyrohyoid (Strap Muscle)
Thyroid Gland
Thyroid Isthmus
Vagus Nerve (X)



a place of mind
THE UNIVERSITY OF BRITISH COLUMBIA

Faculty of Medicine

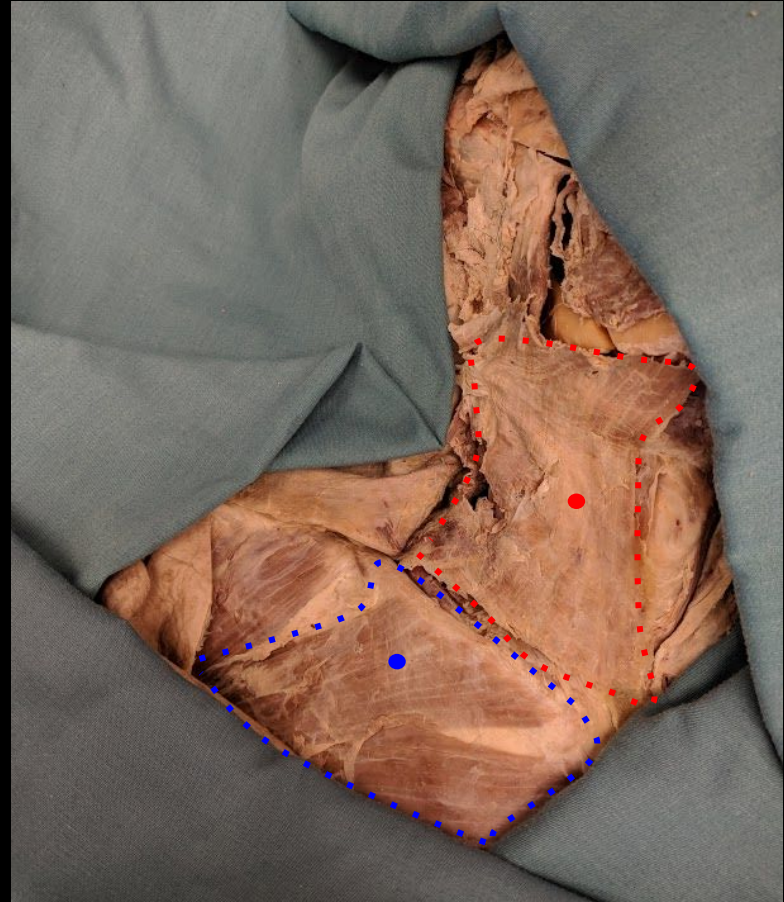
Southern Medical Program

ANTERIOR TRIANGLE OF NECK

Structures in View:

Platysma Muscle

Pectoralis Major Muscle



a place of mind
THE UNIVERSITY OF BRITISH COLUMBIA

Faculty of Medicine

Southern Medical Program

ANTERIOR TRIANGLE OF NECK

Structures in View:

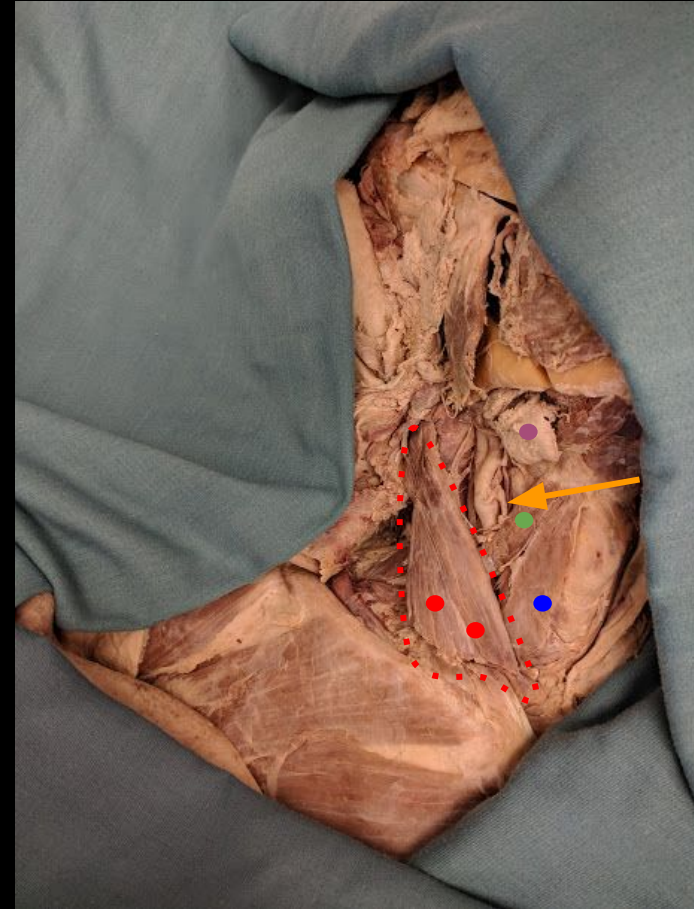
Sternocleidomastoid Muscle

Sternohyoid Muscle

Omohyoid Muscle (Superior Belly)

Submandibular Gland

Superior Thyroid Artery



a place of mind
THE UNIVERSITY OF BRITISH COLUMBIA

Faculty of Medicine

Southern Medical Program

ANTERIOR TRIANGLE OF NECK

Structures in View:

Internal Jugular Vein

Sternothyroid Muscle

Sternohyoid Muscle (reflected)

Omohyoid Muscle

Lobe of Thyroid

Thyrohyoid Muscle

Cricothyroid Muscle

Isthmus of Thyroid



a place of mind
THE UNIVERSITY OF BRITISH COLUMBIA

Faculty of Medicine

Southern Medical Program

ANTERIOR TRIANGLE OF NECK

Structures in View:

Mylohyoid Muscle

Anterior Belly of the Digastric Muscle

Posterior Belly of the Digastric Muscle

Geniohyoid Muscle (Deep to Mylohyoid)

Stylohyoid Muscle



a place of mind
THE UNIVERSITY OF BRITISH COLUMBIA

Faculty of Medicine

Southern Medical Program

ANTERIOR TRIANGLE OF NECK

Structures in View:

Internal Carotid Artery

External Carotid Artery

Ansa Cervicalis (Superior, C1)

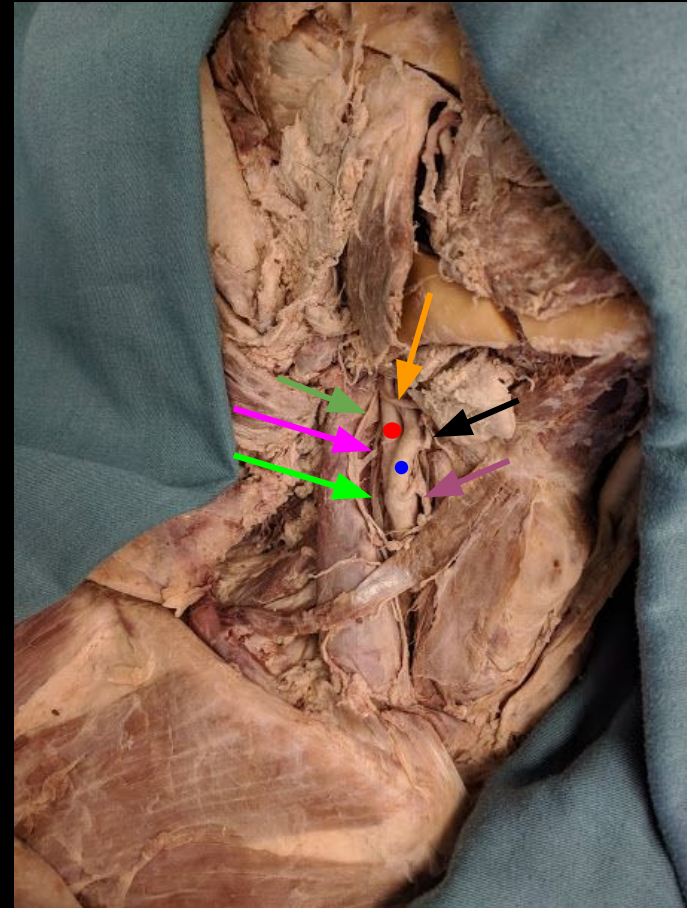
Superior Thyroid Artery

Hypoglossal Nerve

Ansa Cervicalis (Inferior, C2-3)

Vagus Nerve

Lingual Artery



a place of mind
THE UNIVERSITY OF BRITISH COLUMBIA

Faculty of Medicine

Southern Medical Program

ANTERIOR TRIANGLE OF NECK

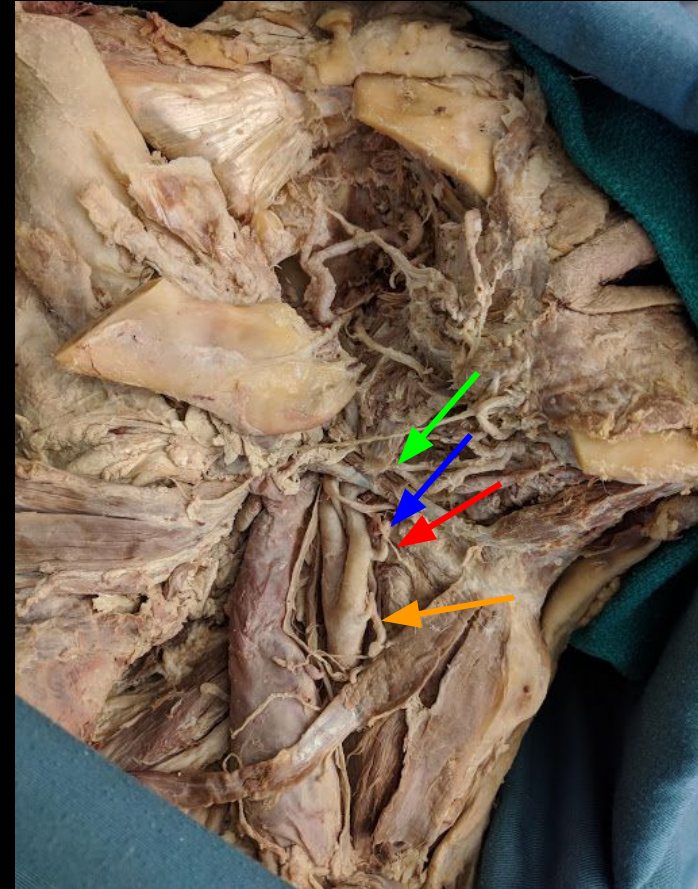
Structures in View:

Lingual Artery

Superior Laryngeal Nerve

Superior Thyroid Artery

Facial Artery



a place of mind
THE UNIVERSITY OF BRITISH COLUMBIA

Faculty of Medicine

Southern Medical Program

References

- Photo source: <https://nyamcenterforhistory.org/tag/andreas-vesalius/>



a place of mind
THE UNIVERSITY OF BRITISH COLUMBIA

Faculty of Medicine

Southern Medical Program

DE HVMANI CORPORIS FABRICA LIBER I. 163
HVMANI COR-
SIMVL COMPACTO.
EX FACIE EXPRES.
PORIS OSSIVM
RVM ANTERIORI
SID.



MEDD 412 ANATOMY



KURT MCBURNEY, ASSOCIATE TEACHING PROFESSOR - IMP
NICHOLAS BYERS - SMP
PETER BAUMEISTER - SMP



a place of mind
THE UNIVERSITY OF BRITISH COLUMBIA

Faculty of Medicine

Southern Medical Program

Proof of Permission for Cadaveric Photos



Island Medical Program

The University of British Columbia
Faculty of Medicine MD
Undergraduate Program
delivered in collaboration with
the University of Victoria

Kurt McBurney
Associate Teaching Professor
Island Medical Program Division of Medical Sciences
University of British Columbia and University of Victoria
mcburnev@ubc.ca
250-472-5536 (office)
250-418-1542 (cell)

To Whom It May Concern:

During 6 week FLEX cycle of April/May 2018, Peter Baumeister and Nick Byers completed a dissection/learning resource project here at the Island Medical Program. They completed dissections of the lower limb corresponding to the upcoming fall gross anatomy laboratories.

As part of this project they took photographs of their dissections with the purpose of creating digital index cards which will help students in future labs with these lower limb dissections. Long before they began the project they asked for, and received, my permission to take and subsequently use the photos to create the digital index cards.

As a final check—as protection for themselves, their work and my responsibility for cadaveric donations—I will vet the final versions of the digital index cards to ensure there are no concerns regarding the photographs and the cadaveric material.

Thank you,

Kurt McBurney



a place of mind
THE UNIVERSITY OF BRITISH COLUMBIA

Faculty of Medicine
Southern Medical Program

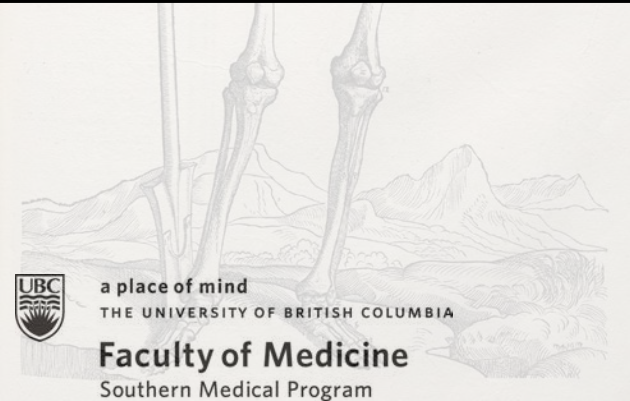
DE HVMANI CORPORIS FABRICA LIBER I. 163
HVMANI COR-
SIMVL COMPACTO.
EX FACIE EXPRES.
PORIS OSSIVM
RVM ANTERIORI
SIO.



LABORATORY 5



CAVERNOUS SINUS



a place of mind
THE UNIVERSITY OF BRITISH COLUMBIA

Faculty of Medicine

Southern Medical Program

INDEX

Abducens Nerve (VI)
Carotid Canal
Foramen Ovale
Foramen Rotundum
Foramen Spinosum

Internal Carotid Artery
Mandibular Nerve (V3)
Maxillary Nerve (V2)
Oculomotor Nerve (III)
Ophthalmic Artery

Ophthalmic Nerve (V1)
Optic Nerve (II)
Sella Turcica
Superior Orbital Fissure
Trigeminal Nerve (V)
Trochlear Nerve (IV)



a place of mind
THE UNIVERSITY OF BRITISH COLUMBIA

Faculty of Medicine

Southern Medical Program

Superior Orbital Osteology

Structures in View:

Foramen Ovale

Foramen Spinosum

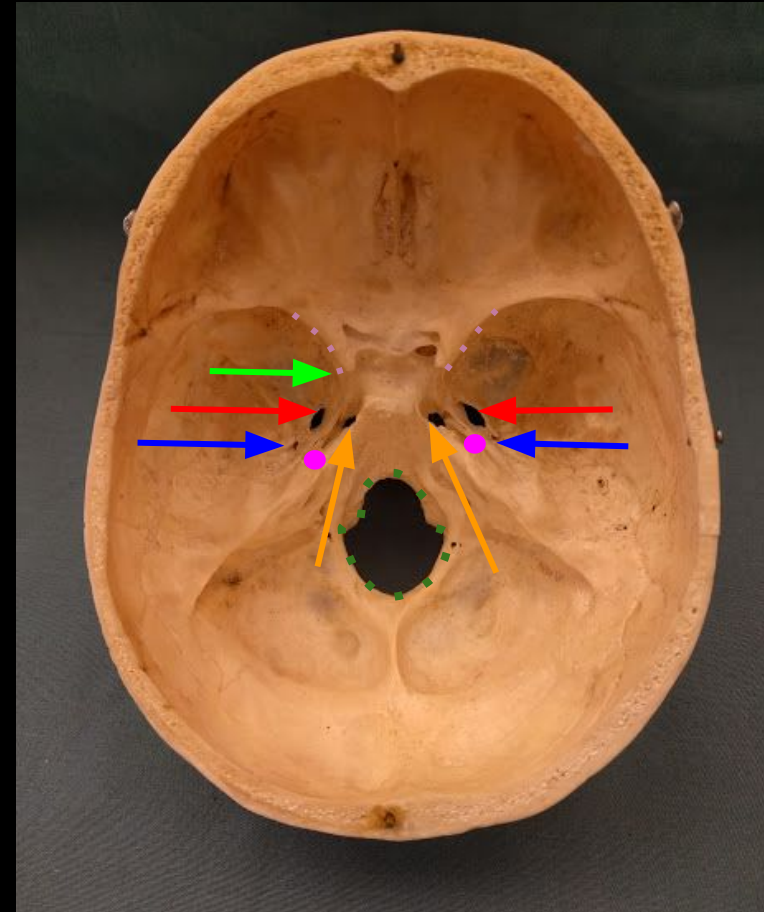
Foramen Magnum

Superior Orbital Fissure

Foramen Lacerum

Carotid Canal

Foramen Rotundum (under superior orbital fissure)



a place of mind
THE UNIVERSITY OF BRITISH COLUMBIA

Faculty of Medicine

Southern Medical Program

Superior Orbit

Structures in View:

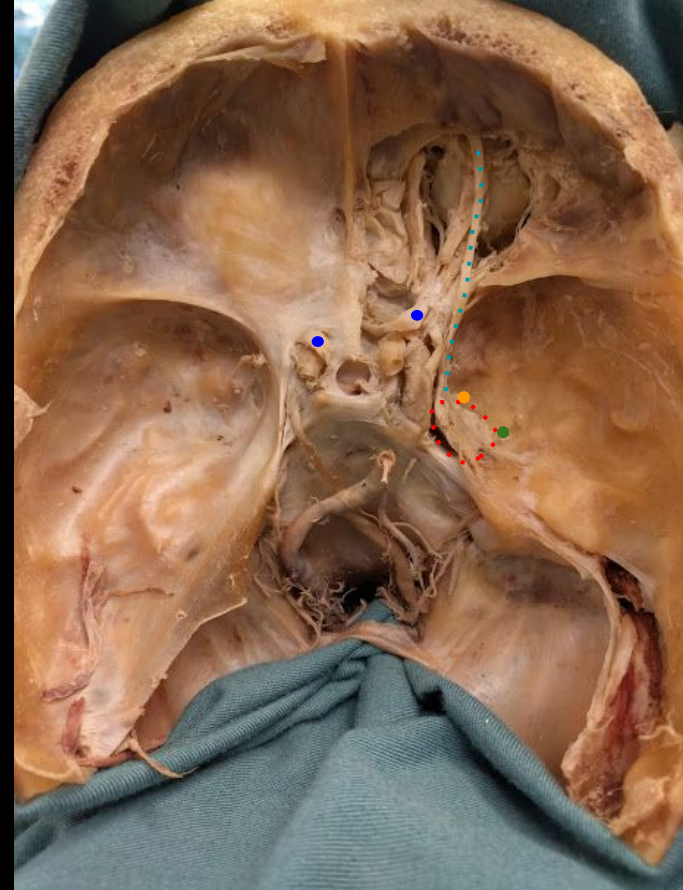
Trigeminal Ganglion (V)

V1 - Ophthalmic

V2 - Maxillary (Exiting Cranium)

V3 - Mandibular (Exiting Cranium)

Optic Nerves (II)



a place of mind
THE UNIVERSITY OF BRITISH COLUMBIA

Faculty of Medicine

Southern Medical Program

Superior Orbit

Structures in View:

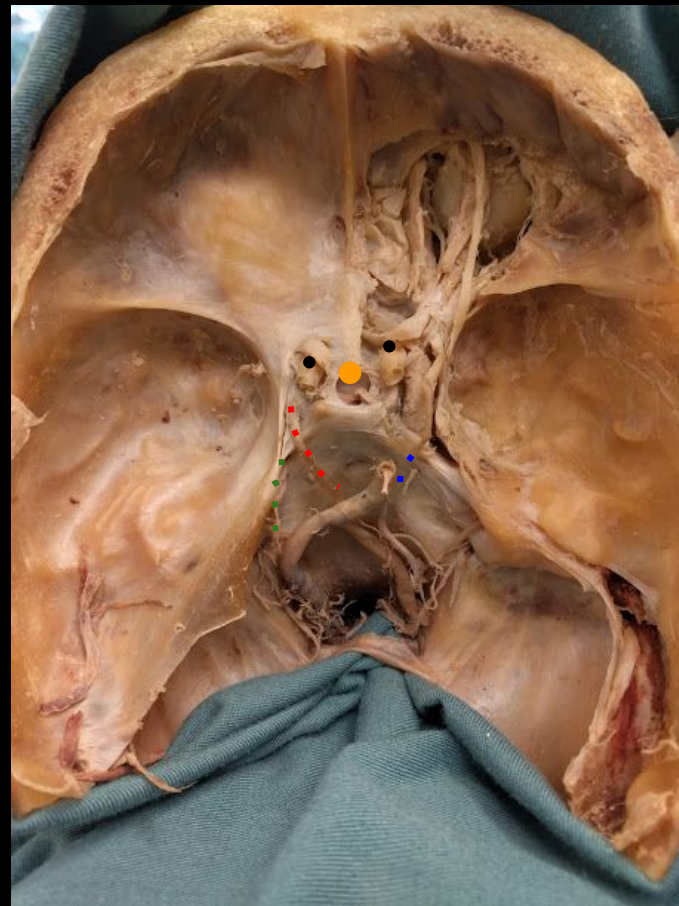
Oculomotor Nerve (III)

Abducens Nerve (VI)

Trochlear Nerve (IV)

Location of Pituitary

Internal Carotid Arteries



a place of mind
THE UNIVERSITY OF BRITISH COLUMBIA

Faculty of Medicine

Southern Medical Program

References

- Photo source: <https://nyamcenterforhistory.org/tag/andreas-vesalius/>



a place of mind
THE UNIVERSITY OF BRITISH COLUMBIA

Faculty of Medicine

Southern Medical Program

DE HVMANI CORPORIS FABRICA LIBER I. 163
HVMANI COR-
SIMPL COMPACTO.
EX FACIE EXPRES.
PORIS OSSIVM
RVM ANTERIORI
SID.



MEDD 412 ANATOMY



KURT MCBURNEY, ASSOCIATE TEACHING PROFESSOR - IMP
NICHOLAS BYERS - SMP
PETER BAUMEISTER - SMP



a place of mind
THE UNIVERSITY OF BRITISH COLUMBIA

Faculty of Medicine

Southern Medical Program

Proof of Permission for Cadaveric Photos



Island Medical Program

The University of British Columbia
Faculty of Medicine MD
Undergraduate Program
delivered in collaboration with
the University of Victoria

Kurt McBurney
Associate Teaching Professor
Island Medical Program Division of Medical Sciences
University of British Columbia and University of Victoria
mcburnev@ubc.ca
250-472-5536 (office)
250-418-1542 (cell)

To Whom It May Concern:

During 6 week FLEX cycle of April/May 2018, Peter Baumeister and Nick Byers completed a dissection/learning resource project here at the Island Medical Program. They completed dissections of the lower limb corresponding to the upcoming fall gross anatomy laboratories.

As part of this project they took photographs of their dissections with the purpose of creating digital index cards which will help students in future labs with these lower limb dissections. Long before they began the project they asked for, and received, my permission to take and subsequently use the photos to create the digital index cards.

As a final check—as protection for themselves, their work and my responsibility for cadaveric donations—I will vet the final versions of the digital index cards to ensure there are no concerns regarding the photographs and the cadaveric material.

Thank you,

Kurt McBurney



a place of mind
THE UNIVERSITY OF BRITISH COLUMBIA

Faculty of Medicine
Southern Medical Program

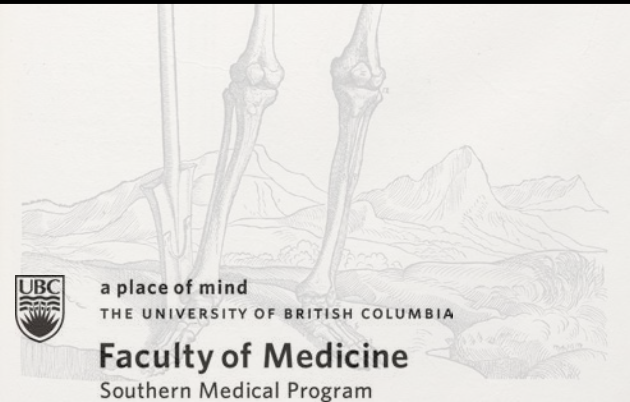
DE HVMANI CORPORIS FABRICA LIBER I. 163
HVMANI COR-
SIMVL COMPACTO.
EX FACIE EXPRES.
PORIS OSSIVM
RVM ANTERIORI
SIO.



LABORATORY 6



INFRATEMPORAL FOSSA



a place of mind
THE UNIVERSITY OF BRITISH COLUMBIA

Faculty of Medicine

Southern Medical Program

INDEX

Auriculotemporal Nerve (V3)
Chorda Tympani (VII)
Foramen Ovale
Foramen Spinosum
Inferior Alveolar Nerve (V3)
Lateral Pterygoid (V3)

Lingual Nerve (V3)
Mandible Body
Mandible Ramus
Mandibular Condylar Process
Mandibular Coronoid Process
Mandibular Foramen

Masseter (V3)
Maxillary Artery
Medial Pterygoid (V3)
Middle Meningeal Artery
Superficial Temporal Artery
Temporalis (V3)
Temporomandibular Joint



a place of mind
THE UNIVERSITY OF BRITISH COLUMBIA

Faculty of Medicine

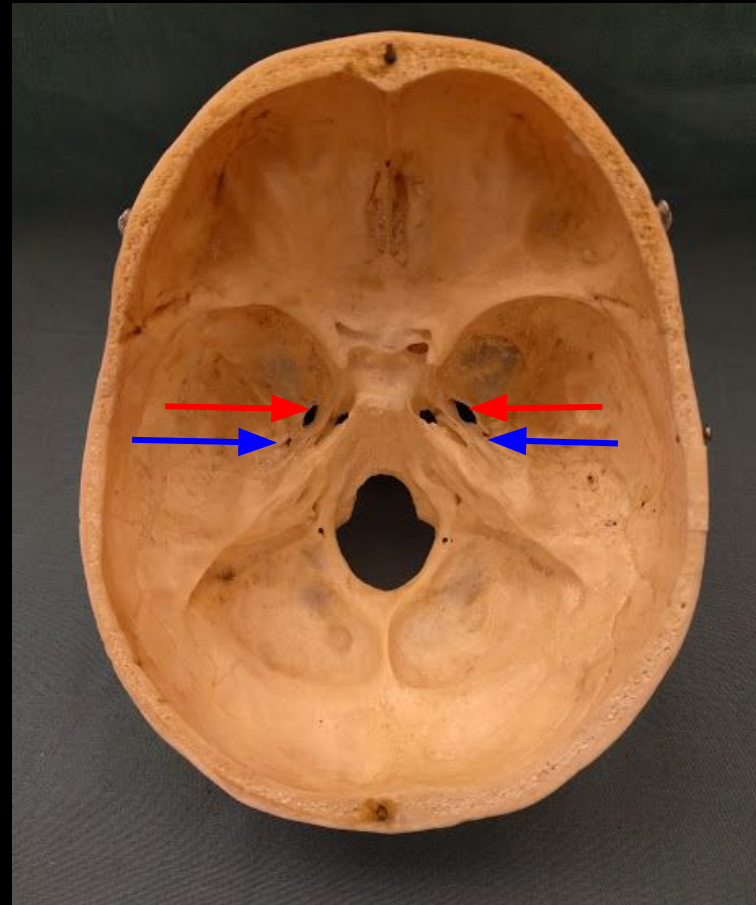
Southern Medical Program

Cranial Foramina

Structures in View:

Foramen Ovale

Foramen Spinosum



a place of mind
THE UNIVERSITY OF BRITISH COLUMBIA

Faculty of Medicine

Southern Medical Program

Osteology of the Mandible

Structures in View:

Coronoid Process

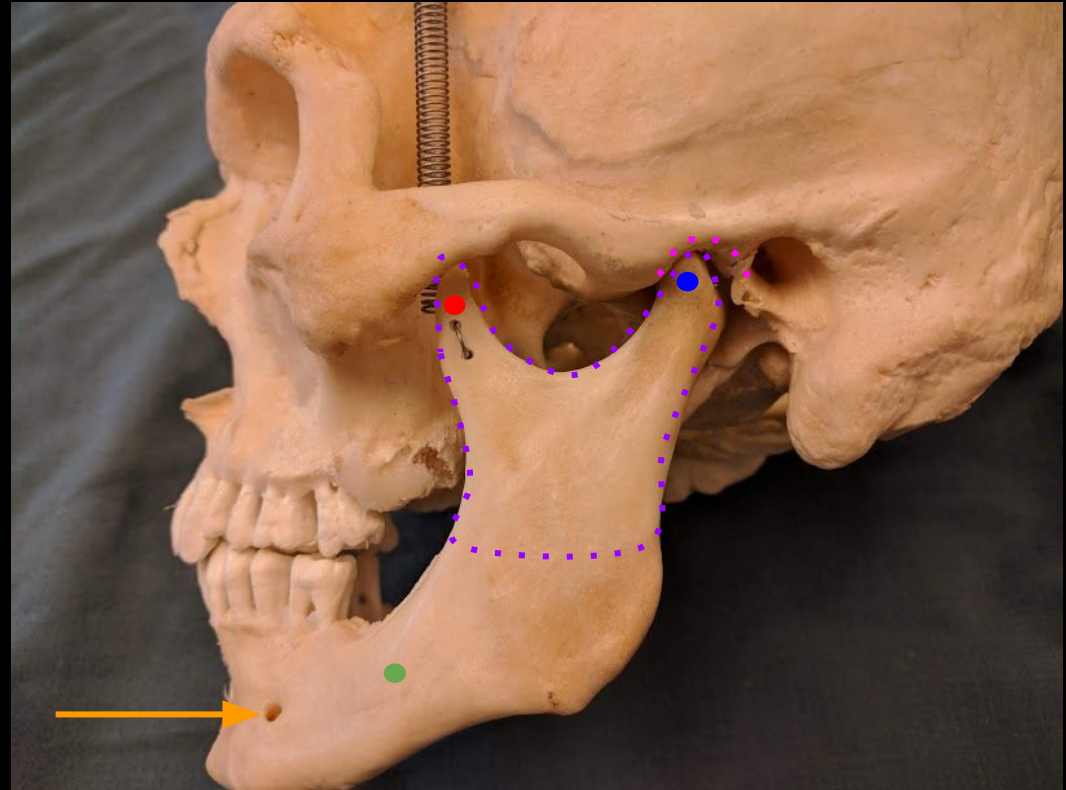
Condylar Process

Body of Mandible

Ramus of Mandible

Mental Foramen

Temporomandibular Joint



a place of mind
THE UNIVERSITY OF BRITISH COLUMBIA

Faculty of Medicine

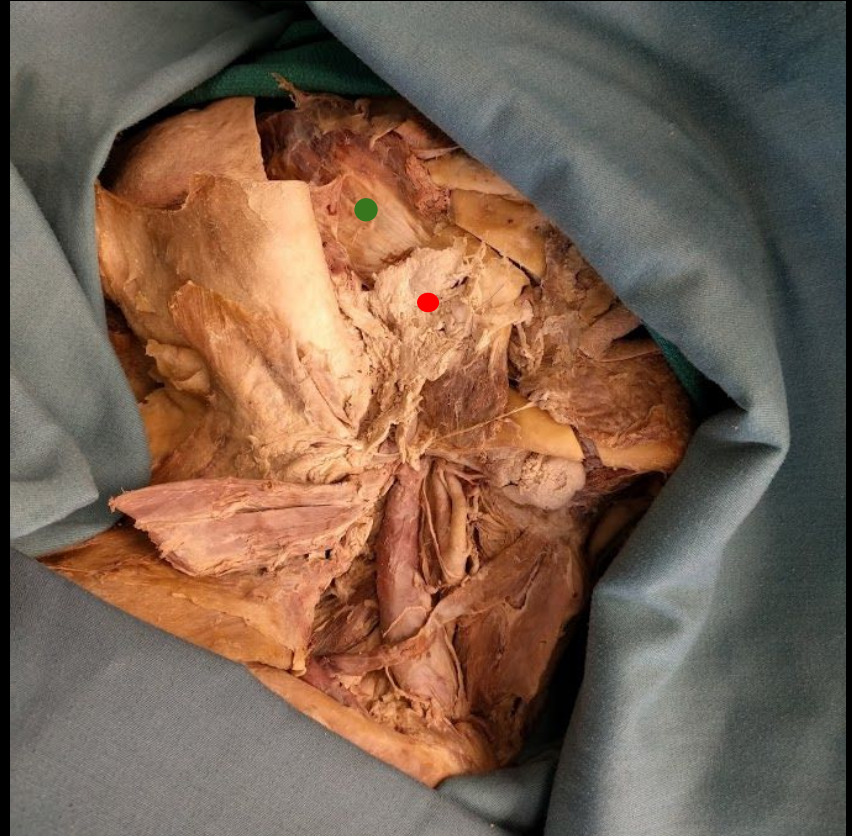
Southern Medical Program

Superficial Infratemporal Fossa

Structures in View:

Parotid Gland

Temporalis Muscle



a place of mind
THE UNIVERSITY OF BRITISH COLUMBIA

Faculty of Medicine

Southern Medical Program

Superficial Infratemporal Fossa

Structures in View:

Masseter Muscle

Parotid Gland (reflected)

Temporalis Muscle

Mandible (cut)

Carotid Artery



a place of mind
THE UNIVERSITY OF BRITISH COLUMBIA

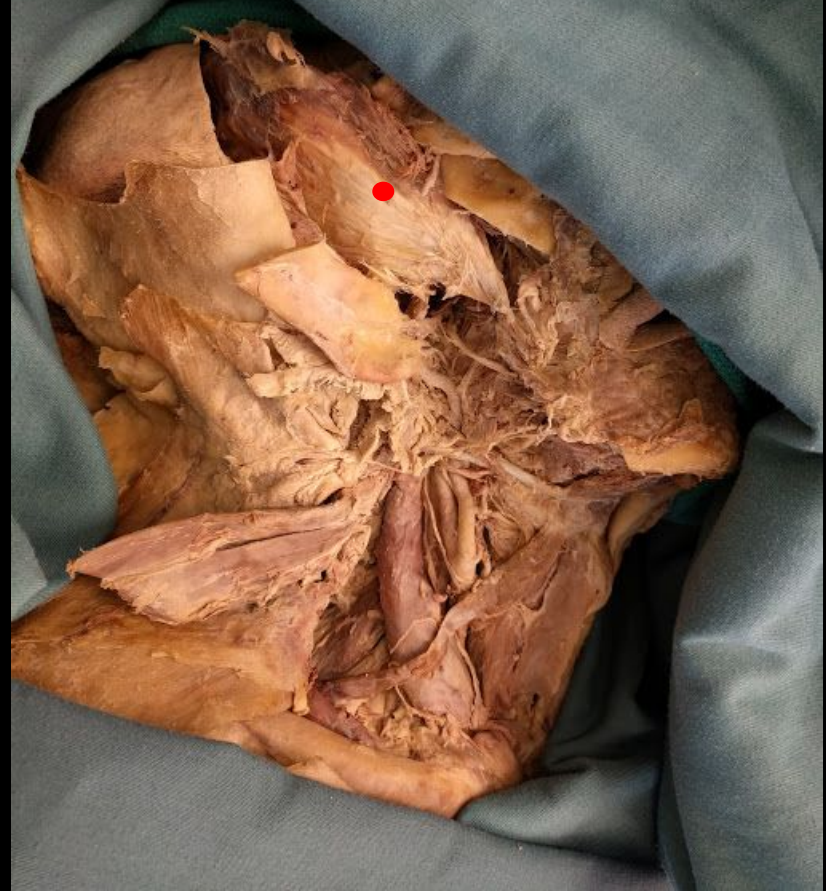
Faculty of Medicine

Southern Medical Program

Superficial Infratemporal Fossa

Structures in View:

Temporalis Muscle



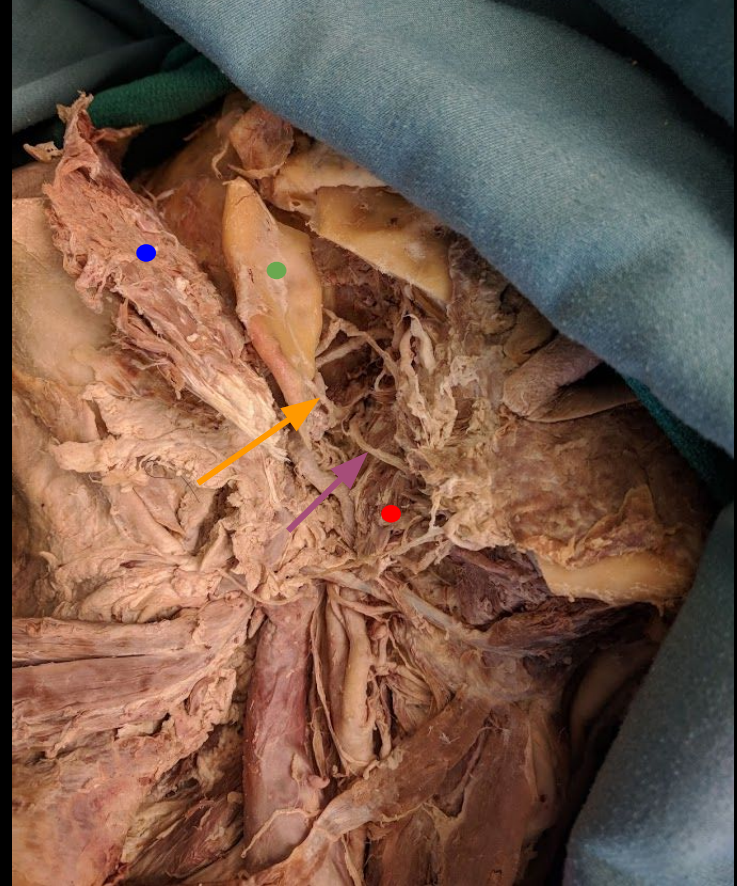
a place of mind
THE UNIVERSITY OF BRITISH COLUMBIA

Faculty of Medicine
Southern Medical Program

Deep Infratemporal Fossa

Structures in View:

- Medial Pterygoid Muscle
- Masseter Muscle (reflected)
- Mandible (reflected)
- Lingual Nerve
- Inferior Alveolar Nerve



a place of mind
THE UNIVERSITY OF BRITISH COLUMBIA

Faculty of Medicine

Southern Medical Program

Deep Infratemporal Fossa

Structures in View:

Auriculotemporal Nerve (V3)

Chorda Tympani Nerve (VII)

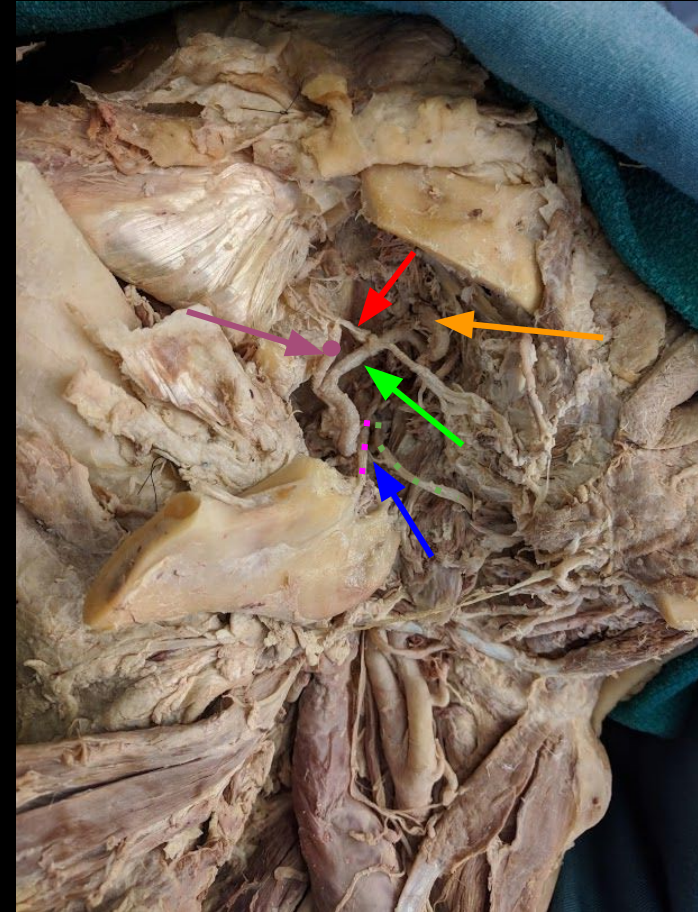
Lingual Nerve (V3)

Superficial Temporal Artery

Middle Meningeal Artery

Inferior Alveolar Nerve (V3)

Maxillary Artery



a place of mind
THE UNIVERSITY OF BRITISH COLUMBIA

Faculty of Medicine

Southern Medical Program

References

- Photo source: <https://nyamcenterforhistory.org/tag/andreas-vesalius/>



a place of mind
THE UNIVERSITY OF BRITISH COLUMBIA

Faculty of Medicine

Southern Medical Program

DE HVMANI CORPORIS FABRICA LIBER I. 163
HVMANI COR-
SIMPL COMPACTO.
EX FACIE EXPRES.
PORIS OSSIVM
RVM ANTERIORI
SID.



MEDD 412 ANATOMY



KURT MCBURNEY, ASSOCIATE TEACHING PROFESSOR - IMP
NICHOLAS BYERS - SMP
PETER BAUMEISTER - SMP



a place of mind
THE UNIVERSITY OF BRITISH COLUMBIA

Faculty of Medicine

Southern Medical Program

Proof of Permission for Cadaveric Photos



Island Medical Program

The University of British Columbia
Faculty of Medicine MD
Undergraduate Program
delivered in collaboration with
the University of Victoria

Kurt McBurney
Associate Teaching Professor
Island Medical Program Division of Medical Sciences
University of British Columbia and University of Victoria
mcburnev@ubc.ca
250-472-5536 (office)
250-418-1542 (cell)

To Whom It May Concern:

During 6 week FLEX cycle of April/May 2018, Peter Baumeister and Nick Byers completed a dissection/learning resource project here at the Island Medical Program. They completed dissections of the lower limb corresponding to the upcoming fall gross anatomy laboratories.

As part of this project they took photographs of their dissections with the purpose of creating digital index cards which will help students in future labs with these lower limb dissections. Long before they began the project they asked for, and received, my permission to take and subsequently use the photos to create the digital index cards.

As a final check—as protection for themselves, their work and my responsibility for cadaveric donations—I will vet the final versions of the digital index cards to ensure there are no concerns regarding the photographs and the cadaveric material.

Thank you,

Kurt McBurney



a place of mind
THE UNIVERSITY OF BRITISH COLUMBIA

Faculty of Medicine
Southern Medical Program

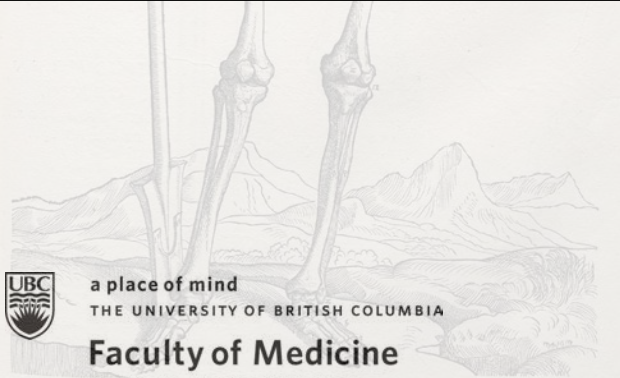
DE HVMANI CORPORIS FABRICA LIBER I. 163
HVMANI COR-
SIMVL COMPACTO.
EX FACIE EXPRES.
PORIS OSSIVM
RVM ANTERIORI
SID.



LABORATORY 7



UPPER AIRWAY



a place of mind
THE UNIVERSITY OF BRITISH COLUMBIA

Faculty of Medicine

Southern Medical Program

INDEX

Choanae
Cricoid Cartilage
Cricothyroid Ligament
Epiglottis
Laryngeal Inlet (Superior
Laryngeal Aperture)

Laryngopharynx
Nasopharynx
Nostrils
Oral Fissure
Oropharyngeal Isthmus
Oropharynx

Palatine Tonsil
Palatoglossal Arch
Palatopharyngeal Arch
Recurrent Laryngeal Nerves
Thyroid Cartilage
Vocal Folds



a place of mind
THE UNIVERSITY OF BRITISH COLUMBIA

Faculty of Medicine

Southern Medical Program

External Upper Airway

Structures in View:

Thyroid Cartilage

Cricoid Cartilage

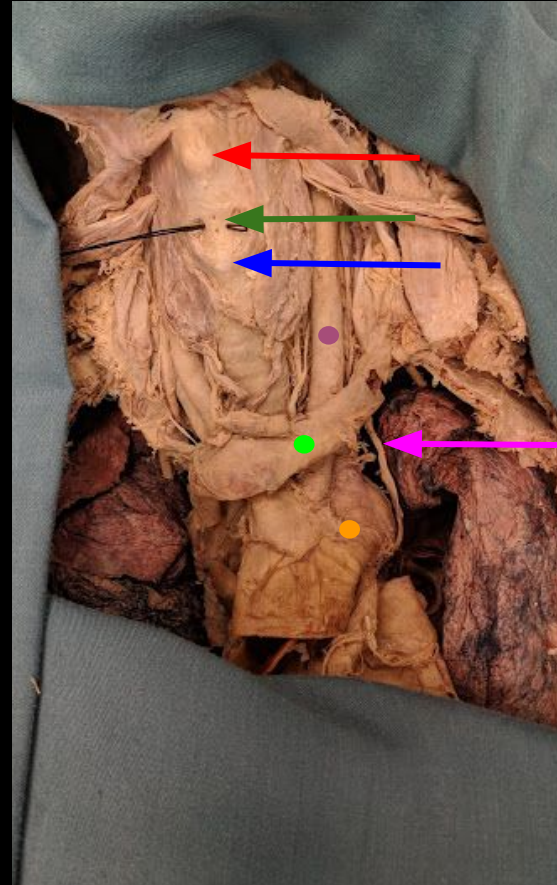
Cricothyroid Ligament

Left Common Carotid Artery

Aortic Arch

Left Vagus Nerve

Left Brachiocephalic Vein



a place of mind
THE UNIVERSITY OF BRITISH COLUMBIA

Faculty of Medicine

Southern Medical Program

External Upper Airway

Structures in View:

Left Vagus Nerve

Lobe of Thyroid

Thyroid Cartilage

Aortic Arch



a place of mind
THE UNIVERSITY OF BRITISH COLUMBIA

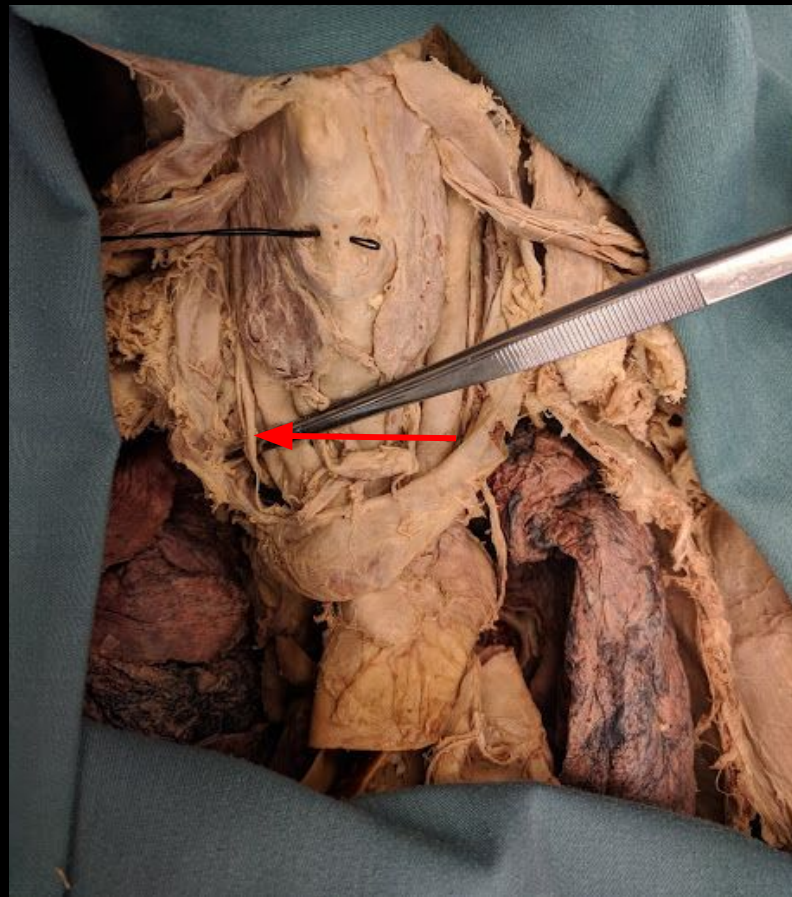
Faculty of Medicine

Southern Medical Program

External Upper Airway

Structures in View:

Right Vagus Nerve



a place of mind
THE UNIVERSITY OF BRITISH COLUMBIA

Faculty of Medicine

Southern Medical Program

Upper Airway

Structures in View:

Nostril

Choanae

Oral Fissure

Oropharyngeal Isthmus (within
oropharynx)

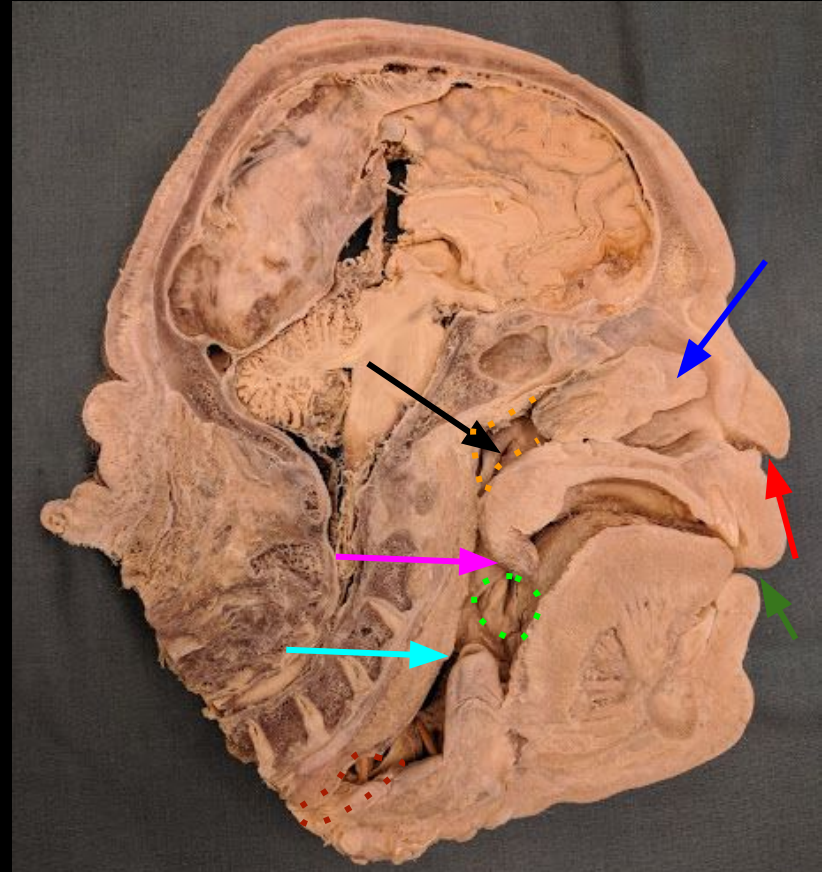
Nasopharynx

Uvula

Opening of Eustachian Tube

Laryngopharynx

Epiglottis



a place of mind
THE UNIVERSITY OF BRITISH COLUMBIA

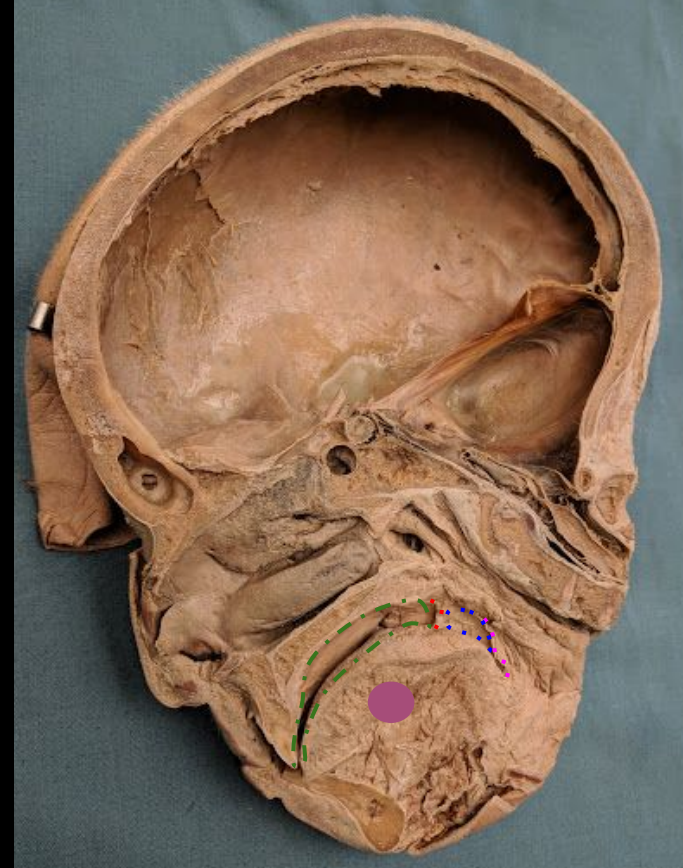
Faculty of Medicine

Southern Medical Program

Upper Airway

Structures in View:

Palatoglossal Arch
Palatine Tonsil (Removed)
Palatopharyngeal Arch
Tongue
Mouth



a place of mind
THE UNIVERSITY OF BRITISH COLUMBIA

Faculty of Medicine

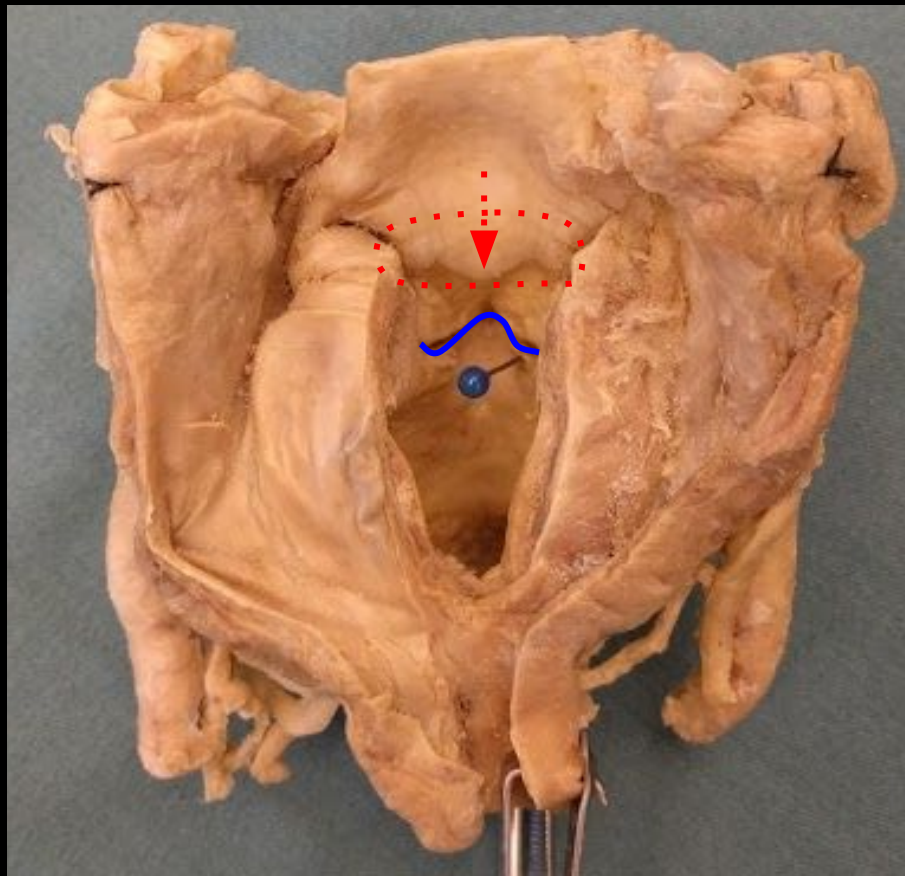
Southern Medical Program

Internal Upper Airway

Structures in View:

Vocal Folds

Laryngeal Inlet (Superior Laryngeal Aperture)



a place of mind
THE UNIVERSITY OF BRITISH COLUMBIA

Faculty of Medicine

Southern Medical Program

References

- Photo source: <https://nyamcenterforhistory.org/tag/andreas-vesalius/>



a place of mind
THE UNIVERSITY OF BRITISH COLUMBIA

Faculty of Medicine

Southern Medical Program