

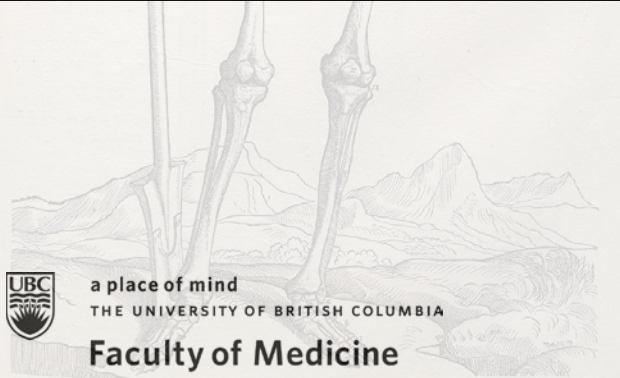
DE HVMANI CORPORIS FABRICA LIBER I. 163
HVMANI COR-
SIMVL COMPACTO.
EX FACIE EXPRES.
PORIS OSSIVM
RPN ANTERIORI
SID.



MEDD 422 ANATOMY



KURT MCBURNEY, ASSOCIATE TEACHING PROFESSOR - IMP
NICHOLAS BYERS - SMP
PETER BAUMEISTER - SMP



a place of mind

THE UNIVERSITY OF BRITISH COLUMBIA

Faculty of Medicine

Southern Medical Program

Proof of Permission for Cadaveric Photos



Island Medical Program

The University of British Columbia
Faculty of Medicine MD
Undergraduate Program
delivered in collaboration with
the University of Victoria

Kurt McBumey
Associate Teaching Professor
Island Medical Program/Division of Medical Sciences
University of British Columbia and University of Victoria
mcbumey@uvic.ca
250-472-5336 (office)
250-418-1542 (cell)

To Whom It May Concern:

During 6 week FLEX cycle of April/May 2018, Peter Baumeister and Nick Byers completed a dissection/learning resource project here at the Island Medical Program. They completed dissections of the lower limb corresponding to the upcoming fall gross anatomy laboratories.

As part of this project they took photographs of their dissections with the purpose of creating digital index cards which will help students in future labs with these lower limb dissections. Long before they began the project they asked for, and received, my permission to take and subsequently use the photos to create the digital index cards.

As a final check—as protection for themselves, their work and my responsibility for cadaveric donations—I will vet the final versions of the digital index cards to ensure there are no concerns regarding the photographs and the cadaveric material.

Thank you,

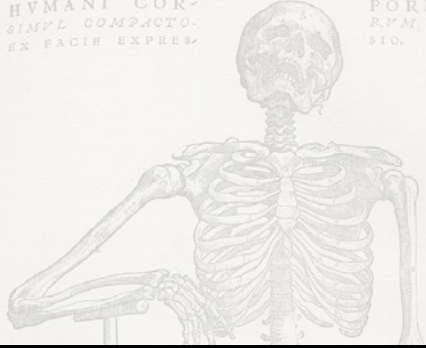
Kurt McBumey



a place of mind
THE UNIVERSITY OF BRITISH COLUMBIA

Faculty of Medicine
Southern Medical Program

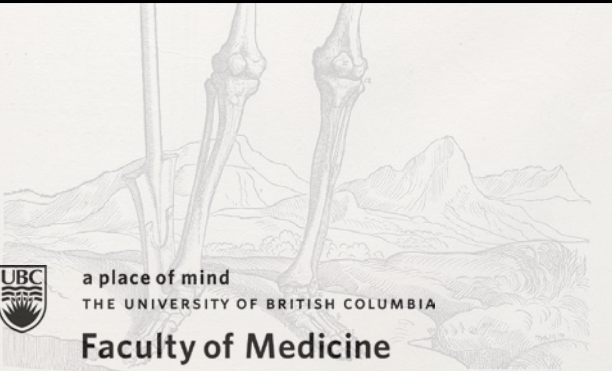
DE HVMANI CORPORIS FABRICA LIBER I. 163
HVMANI COR-
SIMVL COMPACTO.
EX FACIE EXPRES.
PORIS OSSIVM
RPN ANTERIORI
SID.



LABORATORY 1

~

THE HEART



a place of mind

THE UNIVERSITY OF BRITISH COLUMBIA

Faculty of Medicine

Southern Medical Program

INDEX

Coronary sinus
Crista terminalis
Endocardium
Epicardium
Fossa ovalis
Great cardiac vein
Inferior vena cava
Interatrial septum
Left anterior descending artery

Left atrium
Left auricle
Left circumflex artery
Left coronary artery
Left ventricle
Ligamentum arteriosum
Marginal branch of right
coronary artery
Middle cardiac vein
Oblique pericardial sinus
Opening of coronary sinus

Pulmonary veins
Right atrium
Right auricle
Right coronary artery
Right ventricle
Small cardiac vein
Transverse pericardial sinus
Valve of coronary sinus
Valve of foramen ovale
Valve of vena cava

***Items in red are not labeled in slide
package**



a place of mind
THE UNIVERSITY OF BRITISH COLUMBIA

Faculty of Medicine

Southern Medical Program

The Heart - Anterior

Structures in View:

Aorta

Pulmonary Trunk

Right Ventricle

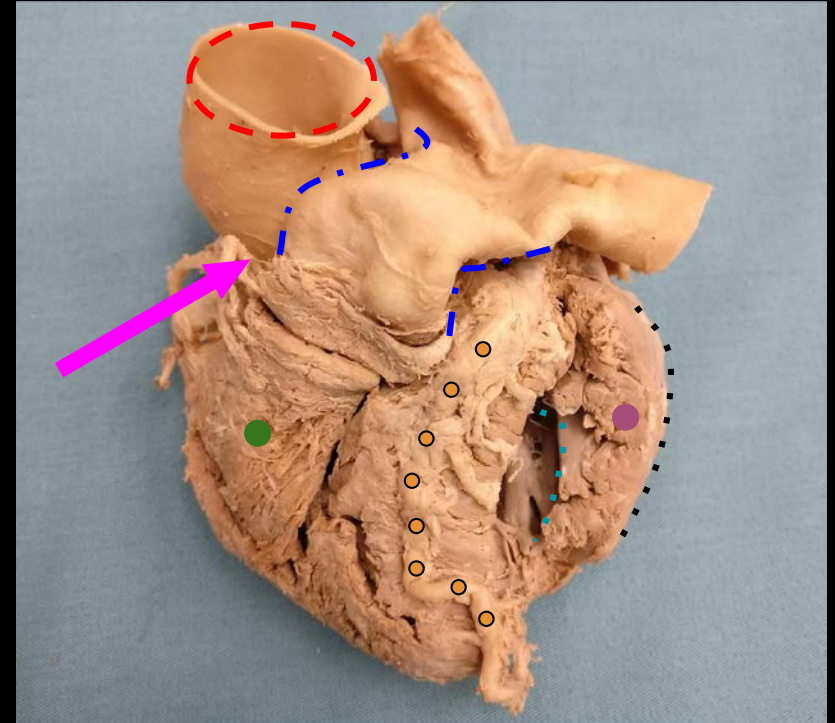
Left Ventricle

Left Anterior Descending Artery

Right Coronary Artery

Epicardial Surface

Endocardium



a place of mind
THE UNIVERSITY OF BRITISH COLUMBIA

Faculty of Medicine

Southern Medical Program

The Heart - Posterior

Structures in View:

Right Coronary Artery

Coronary Sinus

Right Ventricle

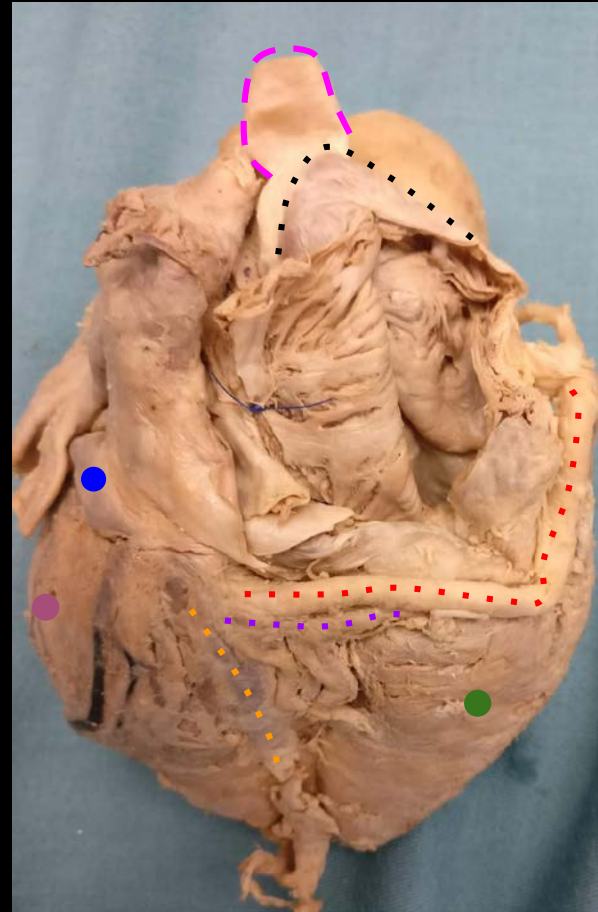
Left Ventricle

Right Atrial Appendage (Reflected/Fixed Superiorly)

Superior Vena Cava

Middle Cardiac Vein

Small Cardiac Vein



a place of mind
THE UNIVERSITY OF BRITISH COLUMBIA

Faculty of Medicine

Southern Medical Program

The Heart

Structures in View:

Right Atrium (Opened)

Coronary Sinus

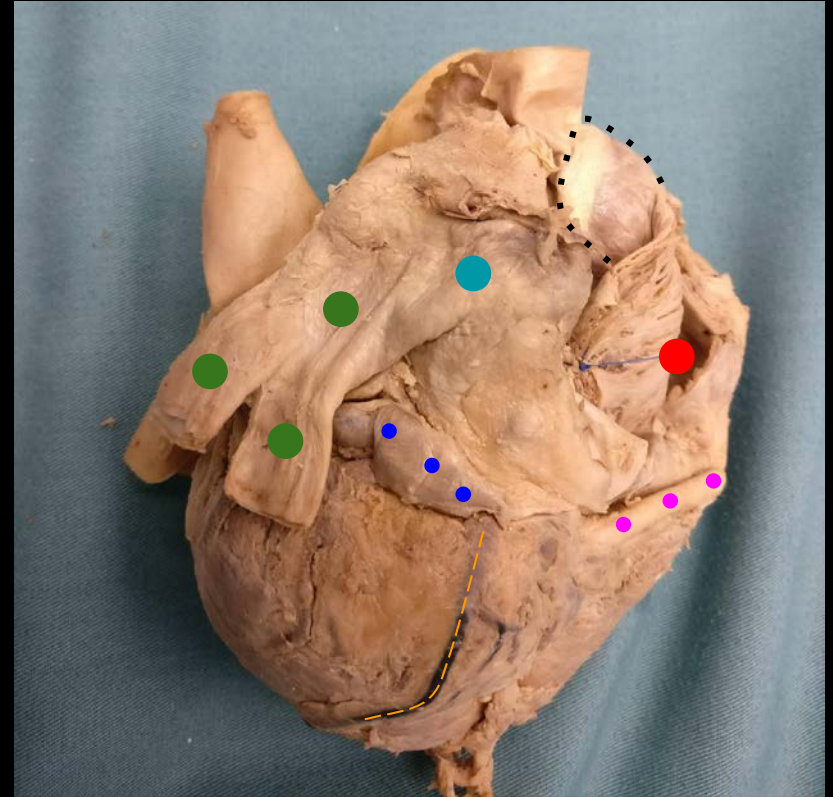
Left Pulmonary Veins

Right Coronary Artery

Right Atrial Appendage (Reflected/Fixed Superiorly)

Left Atrium

Middle Cardiac Vein



a place of mind
THE UNIVERSITY OF BRITISH COLUMBIA

Faculty of Medicine

Southern Medical Program

The Heart

Structures in View:

Right Ventricle

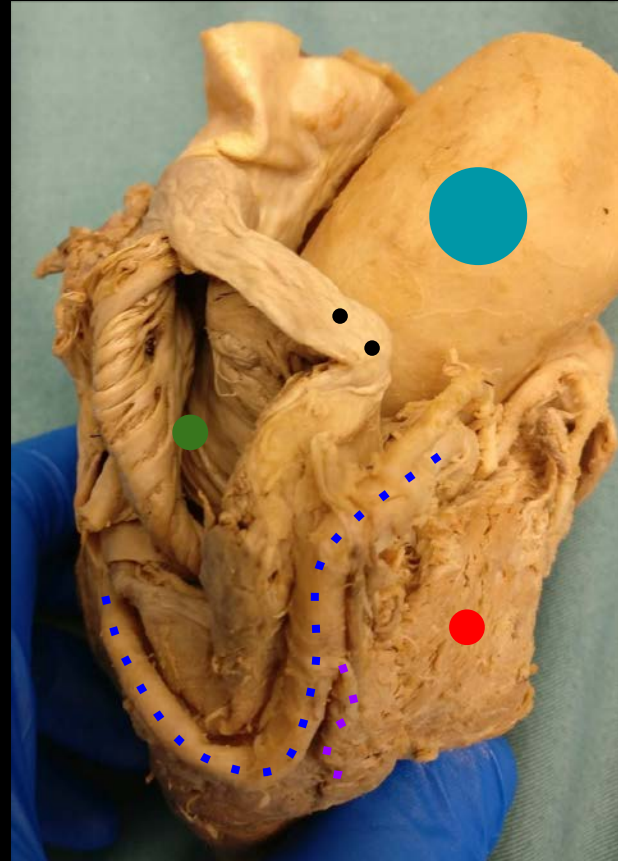
Right Coronary Artery

Right Atrium (Opened)

Right Atrial Appendage (Reflected/Fixed Superiorly)

Aorta

Marginal Branch of the Right Coronary Artery



a place of mind
THE UNIVERSITY OF BRITISH COLUMBIA

Faculty of Medicine

Southern Medical Program

The Heart

Structures in View:

Cristae Terminalis

Pectinate Muscles

Right Atrium (Opened)

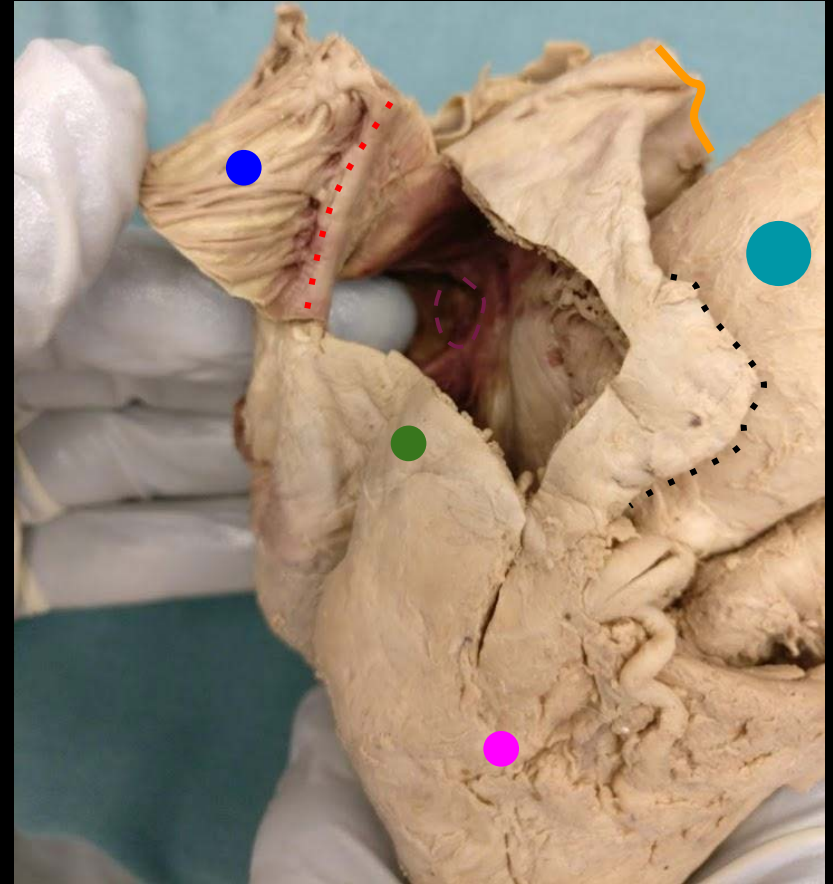
Right Ventricle

Right Atrial Appendage

Aorta

Superior Vena Cava

Fossa Ovalis (Finger Pointing Directly To It)



a place of mind
THE UNIVERSITY OF BRITISH COLUMBIA

Faculty of Medicine

Southern Medical Program

The Heart

Structures in View:

Great Cardiac Vein

Left Anterior Descending Artery

Left Ventricle

Left Atrium

Right Ventricle

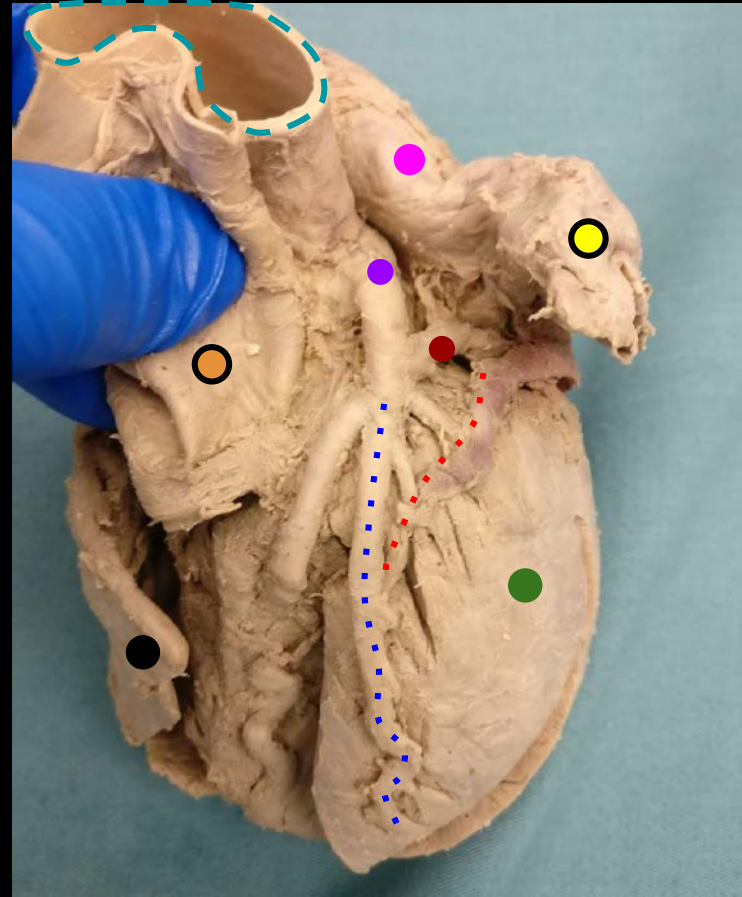
Aorta

Pulmonary Trunk

Pulmonary Veins

Left Coronary Artery

Left Circumflex Artery



a place of mind
THE UNIVERSITY OF BRITISH COLUMBIA

Faculty of Medicine

Southern Medical Program

The Heart

Structures in View:

Fossa Ovalis (Valve of Foramen Ovale)

Right Coronary Artery

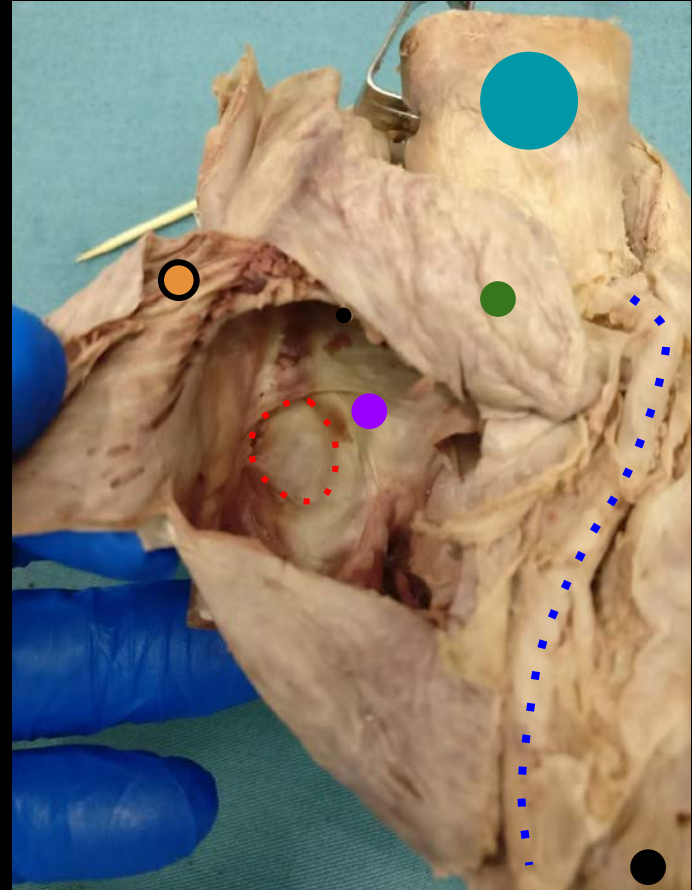
Interatrial Septum

Right Atrial Appendage

Right Ventricle

Aorta

Pectinate Muscles



a place of mind
THE UNIVERSITY OF BRITISH COLUMBIA

Faculty of Medicine

Southern Medical Program

The Heart

Structures in View:

Left Coronary Artery

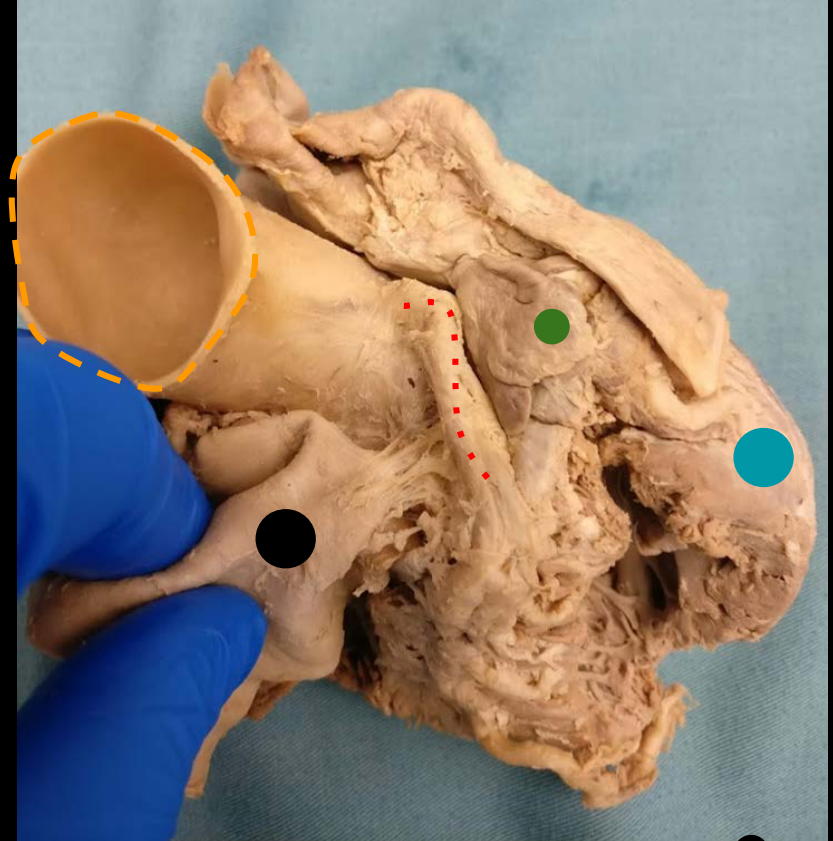
Right Coronary Artery

Left Atrial Appendage

Aorta

Left Ventricle

Pulmonary Artery



a place of mind
THE UNIVERSITY OF BRITISH COLUMBIA

Faculty of Medicine

Southern Medical Program

Right Atrial Embryology

Smooth Surface: Right horn of Sinus Venosus

****Border between these two demarcated by *Crista Terminalis* internally***

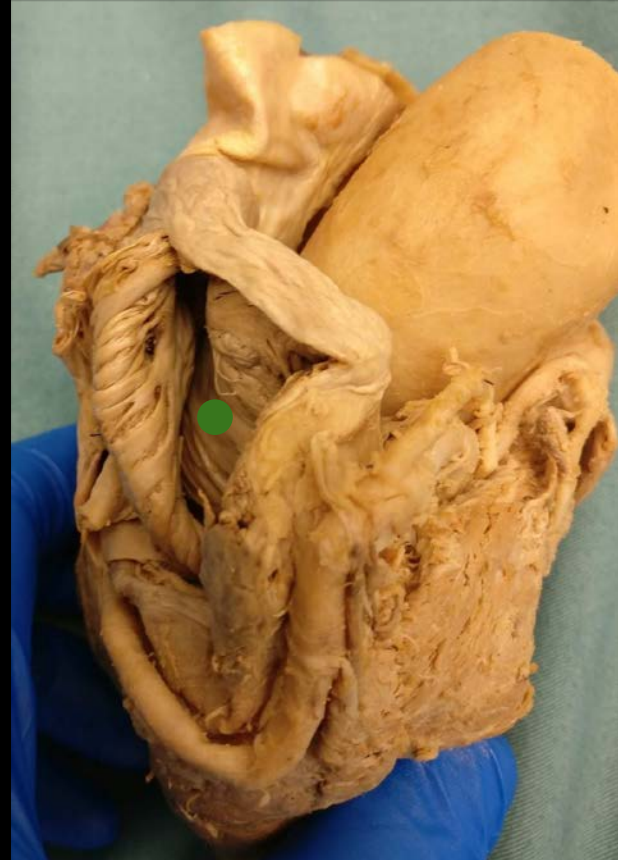
Rough Surface: Primitive Atria

Fossa Ovalis: Septum Primum

Coronary Sinus: Left horn of sinus venosus

Right Coronary Artery: Endothelium from sinus venosus; vessel wall (tunica media and adventitia) from epicardium (CT), which in turn is from proepicardial organ.

*Rough surface of auricle also from primitive atria



a place of mind
THE UNIVERSITY OF BRITISH COLUMBIA

Faculty of Medicine

Southern Medical Program

Left Atrial Embryology

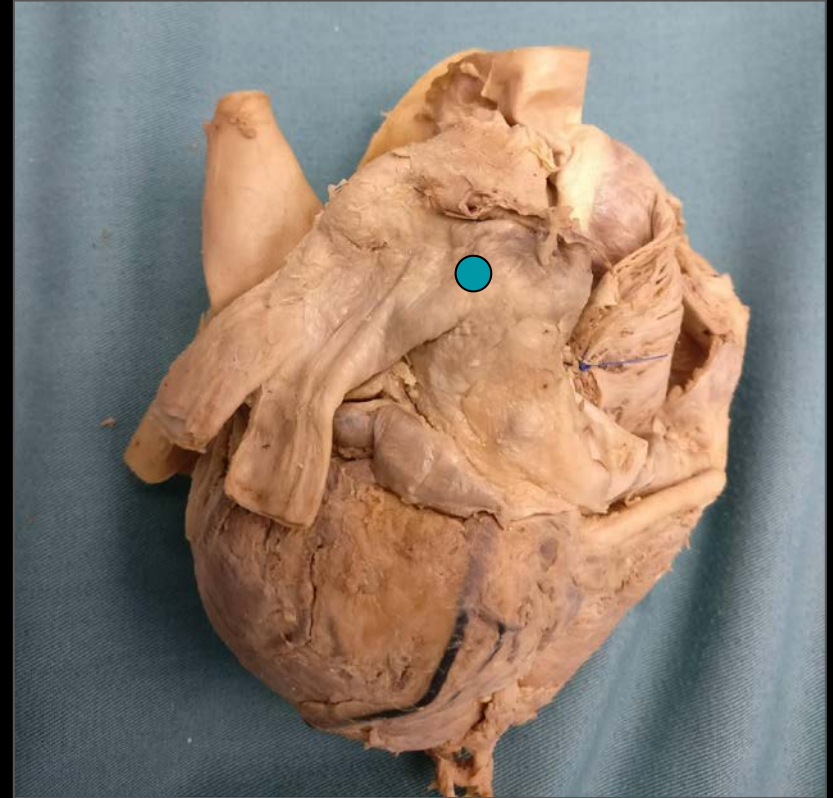
Smooth Surface: Pulmonary veins

Rough Surface: Primitive Atria

Valve of Foramen Ovale: Septum Primum

Left Coronary Artery: Endothelium from sinus venosus; vessel wall (tunica media and adventitia) from epicardium (CT), which in turn is from proepicardial organ.

*Rough surface of auricle also from primitive atria



a place of mind
THE UNIVERSITY OF BRITISH COLUMBIA

Faculty of Medicine

Southern Medical Program

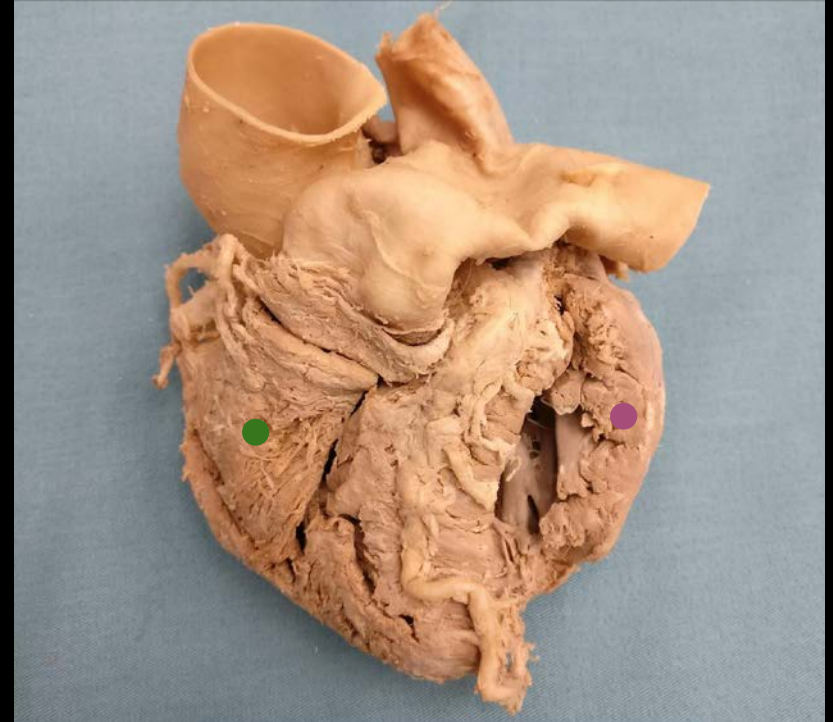
Ventricular Embryology

Right Ventricle: Bulbus Cordis

Left Ventricle: Primitive Ventricle

Epicardium: Mesothelial cells from sinus venosus

Ligamentum Arteriosum: Ductus Arteriosus (not pictured)



a place of mind
THE UNIVERSITY OF BRITISH COLUMBIA

Faculty of Medicine

Southern Medical Program

References

- Photo source: <https://nyamcenterforhistory.org/tag/andreas-vesalius/>



a place of mind
THE UNIVERSITY OF BRITISH COLUMBIA

Faculty of Medicine

Southern Medical Program

DE HVMANI CORPORIS FABRICA LIBER I. 169
HVMANI COR-
SIMVL COMPACTO.
EX FACIE EXPRES.
PORIS OSSIVM
RPN ANTERIORI
SID.



MEDD 422 ANATOMY



KURT MCBURNEY, ASSOCIATE TEACHING PROFESSOR - IMP
NICHOLAS BYERS - SMP
PETER BAUMEISTER - SMP



a place of mind

THE UNIVERSITY OF BRITISH COLUMBIA

Faculty of Medicine

Southern Medical Program

Proof of Permission for Cadaveric Photos



Island Medical Program

The University of British Columbia
Faculty of Medicine MD
Undergraduate Program
delivered in collaboration with
the University of Victoria

Kurt McBumey
Associate Teaching Professor
Island Medical Program/Division of Medical Sciences
University of British Columbia and University of Victoria
mcbumey@uvic.ca
250-472-5336 (office)
250-418-1542 (cell)

To Whom It May Concern:

During 6 week FLEX cycle of April/May 2018, Peter Baumeister and Nick Byers completed a dissection/learning resource project here at the Island Medical Program. They completed dissections of the lower limb corresponding to the upcoming fall gross anatomy laboratories.

As part of this project they took photographs of their dissections with the purpose of creating digital index cards which will help students in future labs with these lower limb dissections. Long before they began the project they asked for, and received, my permission to take and subsequently use the photos to create the digital index cards.

As a final check—as protection for themselves, their work and my responsibility for cadaveric donations—I will vet the final versions of the digital index cards to ensure there are no concerns regarding the photographs and the cadaveric material.

Thank you,

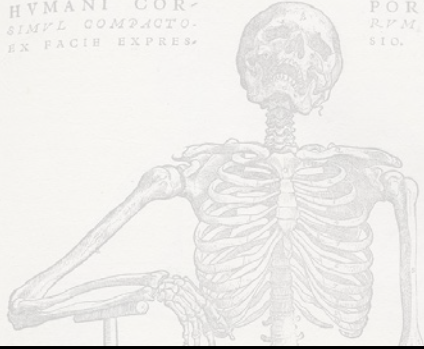
Kurt McBumey



a place of mind
THE UNIVERSITY OF BRITISH COLUMBIA

Faculty of Medicine
Southern Medical Program

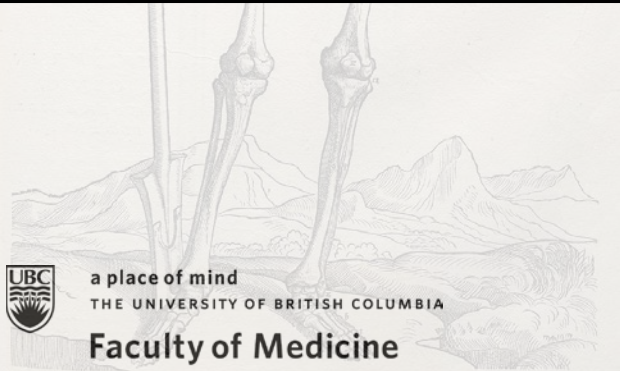
DE HVMANI CORPORIS FABRICA LIBER I. 163
HVMANI COR-
SIMVL COMPACTO.
EX FACIE EXPRES.
PORIS OSSIVM
RPN ANTERIORI
SID.



LABORATORY 2

~

MIDGUT, HINDGUT & VASCULATURE



a place of mind
THE UNIVERSITY OF BRITISH COLUMBIA

Faculty of Medicine

Southern Medical Program

INDEX

Anal Canal

Anastomoses Of Right, Middle,
And Left Colic Arteries

Anterior Cecal Artery

Appendicular Artery

Appendix

Ascending Colon

Bare Area Of Liver

Descending Colon

Epiploic (Omental) Appendices

Esophageal Anastomoses

Haustra Coli

Hepatic Portal Vein

Identify Jejunum Vs Ileum

Ileal Artery

Ileocecal Junction And Valve

Ileocolic Artery

Ileum

Inferior Mesenteric Artery

Jejunal Artery

Jejunum

Left Colic Artery

Marginal Artery

Middle Colic Artery

Paraumbilical Artery

Portocaval Anastomoses:

Posterior Cecal Anastomosis

Rectal Anastomosis

Rectum

Retroperitoneal Anastomoses

Right Colic Artery

Sigmoid Colon

Sigmoidal Artery

Small Intestine

Superior Mesenteric Artery

Superior Rectal Artery

Tenia Coli

Transverse Colon

Vasa Recta

*Items in red are not labeled in slide package



a place of mind
THE UNIVERSITY OF BRITISH COLUMBIA

Faculty of Medicine

Southern Medical Program

Kidneys and Vasculature

Structures in View:

Abdominal Aorta

Inferior Vena Cava

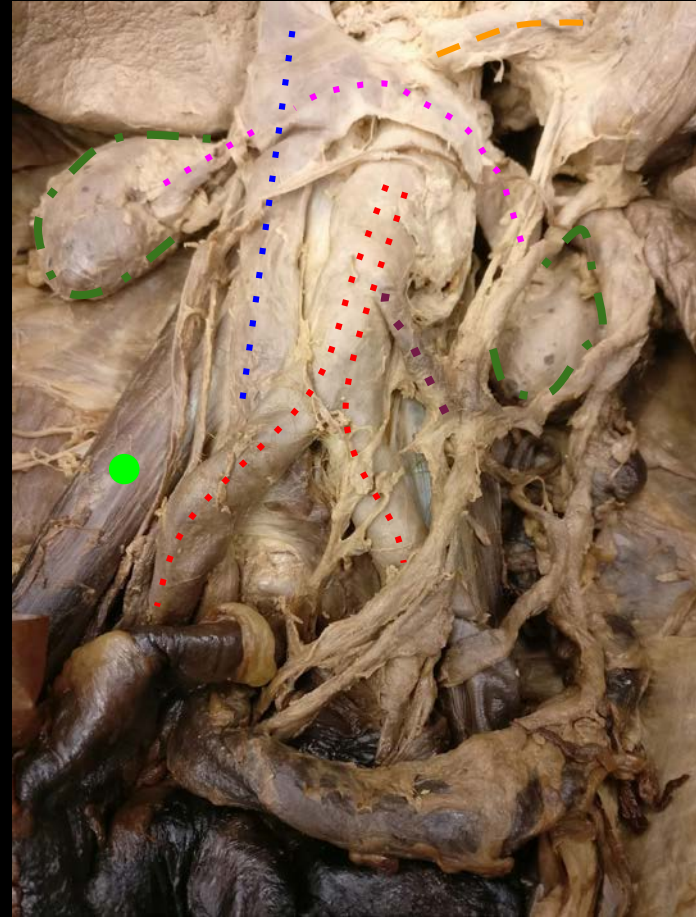
Kidneys

Renal Veins

Right Psoas Muscle

Inferior Mesenteric Artery

Superior Mesenteric Artery



a place of mind
THE UNIVERSITY OF BRITISH COLUMBIA

Faculty of Medicine

Southern Medical Program

Abdomen

Structures in View:

Pancreas

Liver

Kidney (Right)

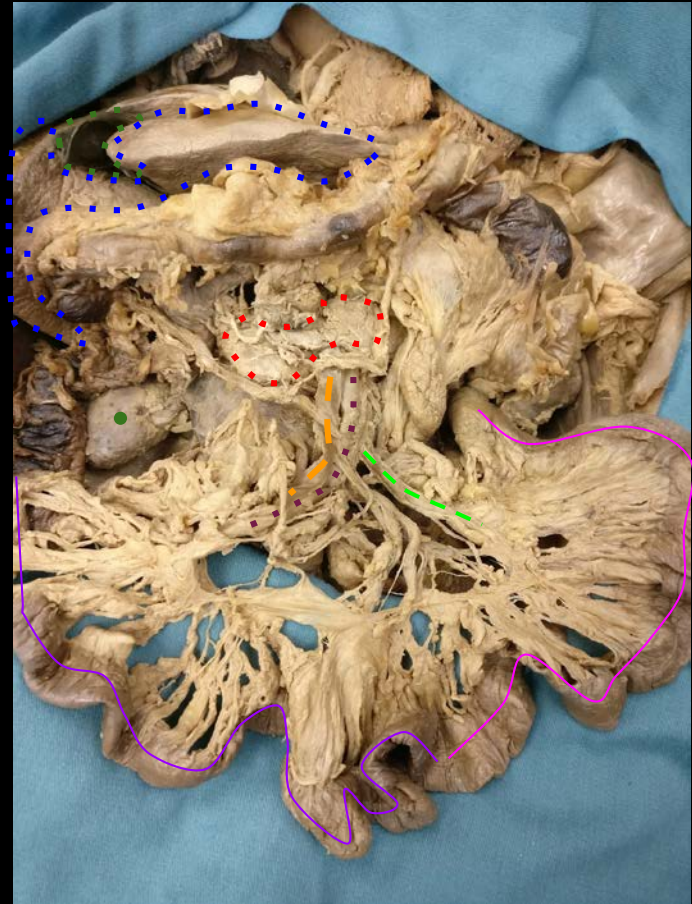
Jejunal Artery

Superior Mesenteric Artery

Superior Mesenteric Vein

Jejunum

Ileum



a place of mind
THE UNIVERSITY OF BRITISH COLUMBIA

Faculty of Medicine

Southern Medical Program

Abdomen

Structures in View:

Right Colic Artery
Superior Mesenteric Artery
Jejunum
Jejunal Artery
Ileum
Ileal Artery
Vasa Recta
Ileocolic Artery



a place of mind
THE UNIVERSITY OF BRITISH COLUMBIA

Faculty of Medicine

Southern Medical Program

Abdomen

Structures in View:

Abdominal Aorta

Common Iliac Arteries

Inferior Mesenteric Artery

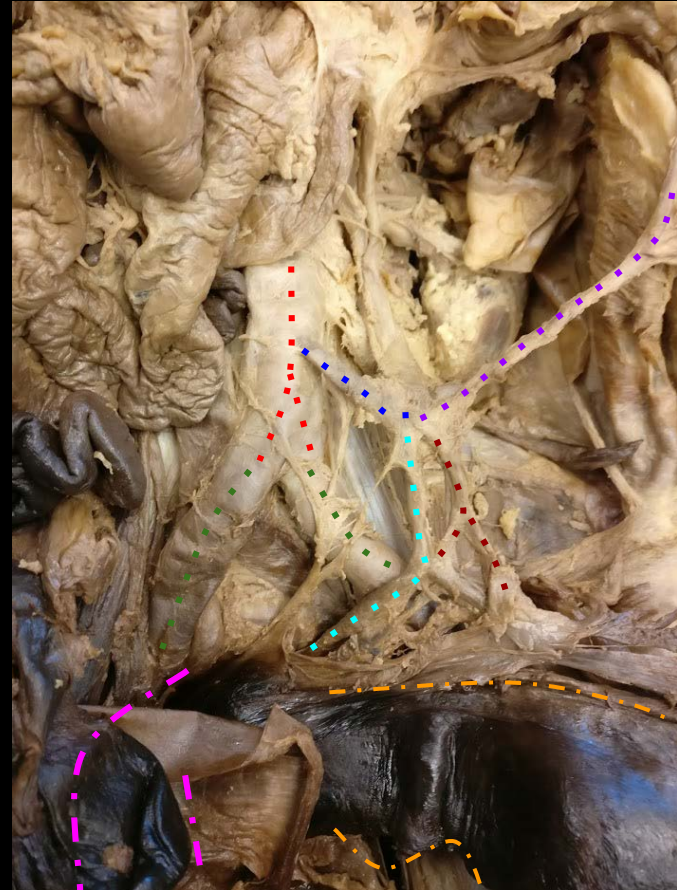
Left Colic Artery

Sigmoid Colon

Sigmoid Arteries

Rectum

Superior Rectal Artery



a place of mind
THE UNIVERSITY OF BRITISH COLUMBIA

Faculty of Medicine

Southern Medical Program

Abdomen

Structures in View:

- Abdominal Aorta
- Inferior Mesenteric Artery
- Ascending Colon
- Sigmoid Colon
- Transverse Colon
- Descending Colon
- Haustra Coli
- Tenia Coli



a place of mind
THE UNIVERSITY OF BRITISH COLUMBIA

Faculty of Medicine

Southern Medical Program

Abdomen

Structures in View:

- Abdominal Aorta
- Inferior Mesenteric Artery
- Left Colic Artery
- Right Colic Artery
- Middle Colic Artery



a place of mind
THE UNIVERSITY OF BRITISH COLUMBIA

Faculty of Medicine

Southern Medical Program

Abdomen

Structures in View:

Ileocecal Junction

Appendix (with appendicular artery)

Ileocolic Artery

Cecum

Epiplioic Appendices



a place of mind
THE UNIVERSITY OF BRITISH COLUMBIA

Faculty of Medicine

Southern Medical Program

References

- Photo source: <https://nyamcenterforhistory.org/tag/andreas-vesalius/>



a place of mind
THE UNIVERSITY OF BRITISH COLUMBIA

Faculty of Medicine

Southern Medical Program

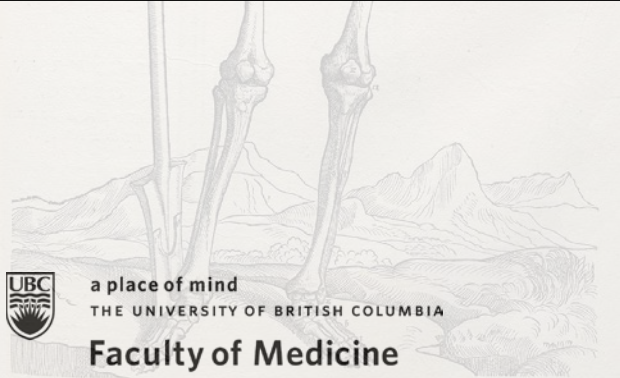
DE HVMANI CORPORIS FABRICA LIBER I. 163
HVMANI COR-
SIMVL COMPACTO.
EX FACIE EXPRES.
PORIS OSSIVM
RPN ANTERIORI
SID.



MEDD 422 ANATOMY



KURT MCBURNEY, ASSOCIATE TEACHING PROFESSOR - IMP
NICHOLAS BYERS - SMP
PETER BAUMEISTER - SMP



a place of mind

THE UNIVERSITY OF BRITISH COLUMBIA

Faculty of Medicine

Southern Medical Program

Proof of Permission for Cadaveric Photos



Island Medical Program

The University of British Columbia
Faculty of Medicine MD
Undergraduate Program
delivered in collaboration with
the University of Victoria

Kurt McBumey
Associate Teaching Professor
Island Medical Program/Division of Medical Sciences
University of British Columbia and University of Victoria
mcbumey@uvic.ca
250-472-5336 (office)
250-418-1542 (cell)

To Whom It May Concern:

During 6 week FLEX cycle of April/May 2018, Peter Baumeister and Nick Byers completed a dissection/learning resource project here at the Island Medical Program. They completed dissections of the lower limb corresponding to the upcoming fall gross anatomy laboratories.

As part of this project they took photographs of their dissections with the purpose of creating digital index cards which will help students in future labs with these lower limb dissections. Long before they began the project they asked for, and received, my permission to take and subsequently use the photos to create the digital index cards.

As a final check—as protection for themselves, their work and my responsibility for cadaveric donations—I will vet the final versions of the digital index cards to ensure there are no concerns regarding the photographs and the cadaveric material.

Thank you,

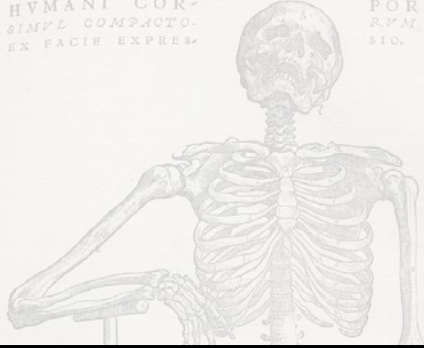
Kurt McBumey



a place of mind
THE UNIVERSITY OF BRITISH COLUMBIA

Faculty of Medicine
Southern Medical Program

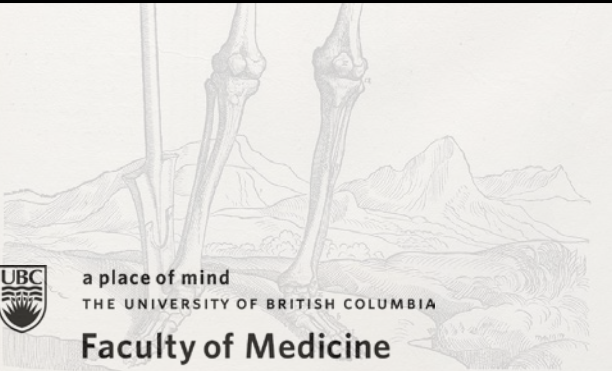
DE HVMANI CORPORIS FABRICA LIBER I. 163
HVMANI COR-
SIMVL COMPACTO.
EX FACIE EXPRES.
PORIS OSSIVM
RPN. ANTERIORI
SID.



LABORATORY 3

~

THE FOREARM



a place of mind
THE UNIVERSITY OF BRITISH COLUMBIA

Faculty of Medicine

Southern Medical Program

INDEX

OSTEOLOGY

Capitulum Of Humerus
Common Extensor Tendon
Common Flexor Tendon
Coronoid Fossa
Coronoid Process
Dorsal Tubercle Of Radius
Head Of Ulna
Head Of Radius
Lateral Epicondyle Of Humerus
Medial Epicondyle Of Humerus
Neck Of Radius
Olecranon Fossa
Olecranon Process

Radial Notch
Radial Tuberosity
Styloid Process
Trochlea Of Humerus
Trochlear Notch
Ulnar Notch
Ulnar Tuberosity

MUSCLES

Brachial Artery
Extensor Carpi Brevis Longus
Extensor Carpi Radialis Longus
Extensor Carpi Ulnaris
Extensor Digiti Minimi
Extensor Digitorum
Extensor Indicis
Extensor Pollicis Brevis

Abductor Pollicis Longus
Extensor Pollicis Longus
Flexor Carpi Radialis
Flexor Carpi Ulnaris
Flexor Digitorum Profundus
Flexor Digitorum Superficialis
Flexor Pollicis Longus
Median Nerve
Palmaris Longus
Pronator Quadratus
Flexor Retinaculum
Pronator Teres
Radial Artery
Radial Nerve (Not pictured)
Ulnar Artery
Ulnar Nerve



a place of mind
THE UNIVERSITY OF BRITISH COLUMBIA

Faculty of Medicine

Southern Medical Program

The Humerus

Structures in View:

Capitulum

Trochlea

Radial Fossa

Coronoid Fossa

Medial Epicondyle (Common Flexor Origin)

Lateral Epicondyle (Common Extensor Origin)

Greater Tubercle

Lesser Tubercle

Intertubercular Sulcus (Bicipital Groove)



a place of mind
THE UNIVERSITY OF BRITISH COLUMBIA

Faculty of Medicine

Southern Medical Program

The Humerus

Structures in View:

Radial Sulcus

Olecranon Fossa

Surgical Neck

Anatomical Neck

Lateral Epicondyle (Common Extensor Origin)

Greater Tubercle

Medial Epicondyle (Common Flexor Origin)



a place of mind
THE UNIVERSITY OF BRITISH COLUMBIA

Faculty of Medicine

Southern Medical Program

The Radius

Structures in View:

Head

Neck

Radial Tuberosity

Shaft

Ulnar Notch

Styloid Process



a place of mind
THE UNIVERSITY OF BRITISH COLUMBIA

Faculty of Medicine

Southern Medical Program

The Radius

Structures in View:

Dorsal Tubercle

Neck

Radial Tuberosity

Shaft

Ulnar Notch

Styloid Process



a place of mind
THE UNIVERSITY OF BRITISH COLUMBIA

Faculty of Medicine

Southern Medical Program

The Ulna

Structures in View:

Head

Coronoid Process

Radial Notch

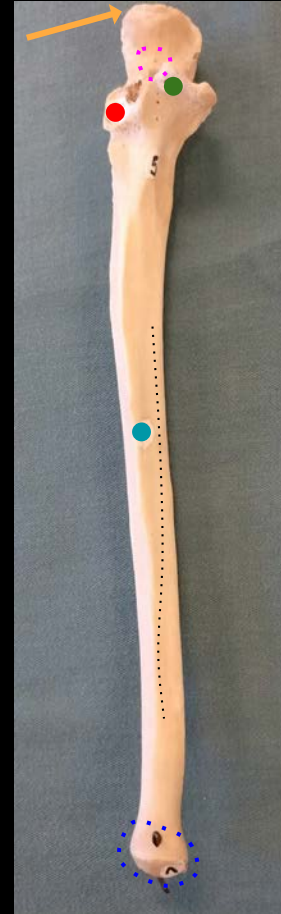
Trochlear Notch

Olecranon Process

Ulnar Tuberosity

Styloid Process

Shaft



a place of mind
THE UNIVERSITY OF BRITISH COLUMBIA

Faculty of Medicine

Southern Medical Program

The Ulna

Structures in View:

Head

Styloid Process



a place of mind
THE UNIVERSITY OF BRITISH COLUMBIA

Faculty of Medicine
Southern Medical Program

The Left Dorsal Forearm

Structures in View:

Brachioradialis

Extensor Carpi Radialis Longus

Extensor Carpi Radialis Brevis

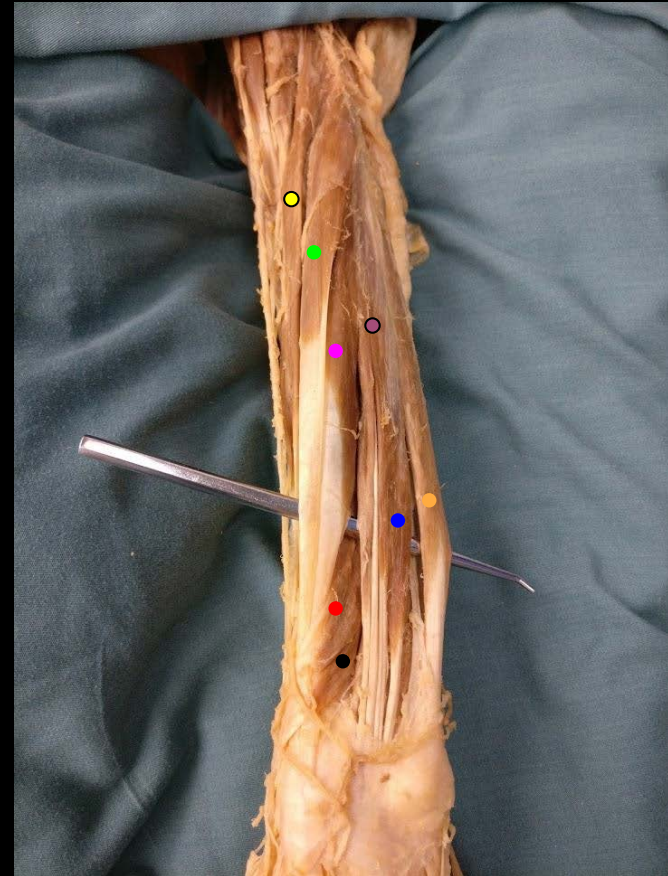
Extensor Digitorum

Extensor Digiti Minimi

Extensor Carpi Ulnaris

Abductor Pollicis Longus

Extensor Pollicis Brevis



a place of mind
THE UNIVERSITY OF BRITISH COLUMBIA

Faculty of Medicine

Southern Medical Program

The Left Dorsal Forearm

Structures in View:

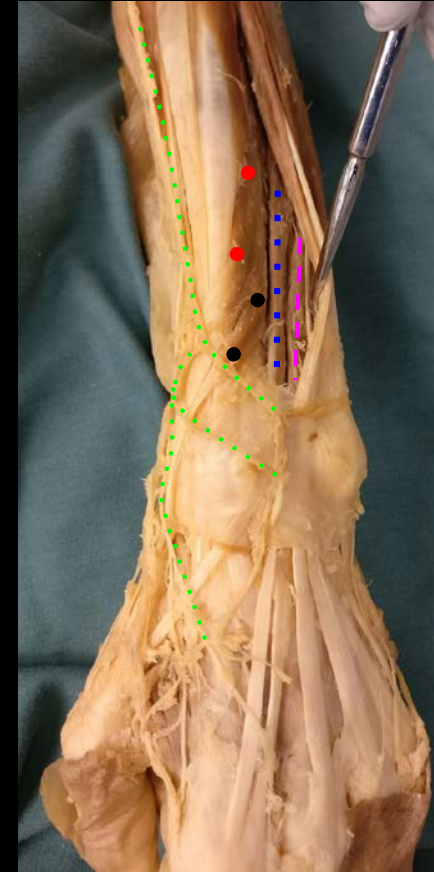
Abductor Pollicis Longus

Extensor Pollicis Brevis

Extensor Pollicis Longus

Extensor Indicis

Radial Nerve (Mostly Superficial Branch)



a place of mind
THE UNIVERSITY OF BRITISH COLUMBIA

Faculty of Medicine

Southern Medical Program

The Left Ventral Forearm

Structures in View:

Radial Artery

Palmaris Longus (Tendon)

Flexor Retinaculum

Flexor Carpi Ulnaris (Tendon)

Flexor Carpi Radialis

Pronator Teres (Use your imagination)



a place of mind
THE UNIVERSITY OF BRITISH COLUMBIA

Faculty of Medicine

Southern Medical Program

The Left Ventral Forearm

Structures in View:

Radial Artery

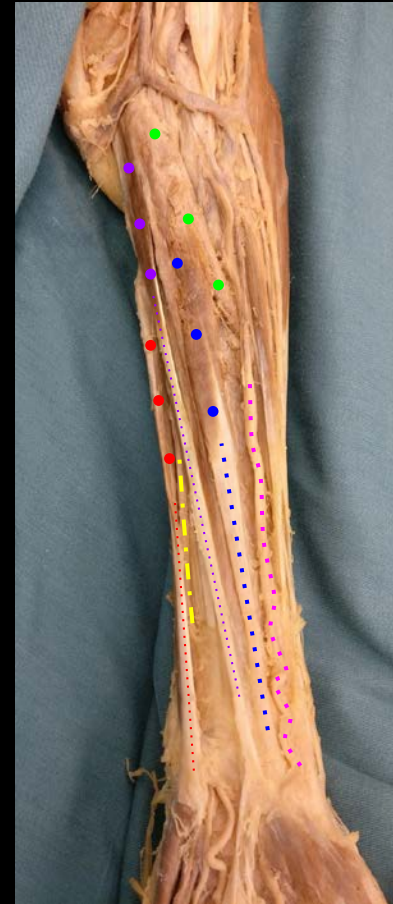
Palmaris Longus

Flexor Carpi Ulnaris

Flexor Carpi Radialis

Pronator Teres

Ulnar Nerve



a place of mind
THE UNIVERSITY OF BRITISH COLUMBIA

Faculty of Medicine

Southern Medical Program

The Left Ventral Forearm

Structures in View:

Brachial Artery

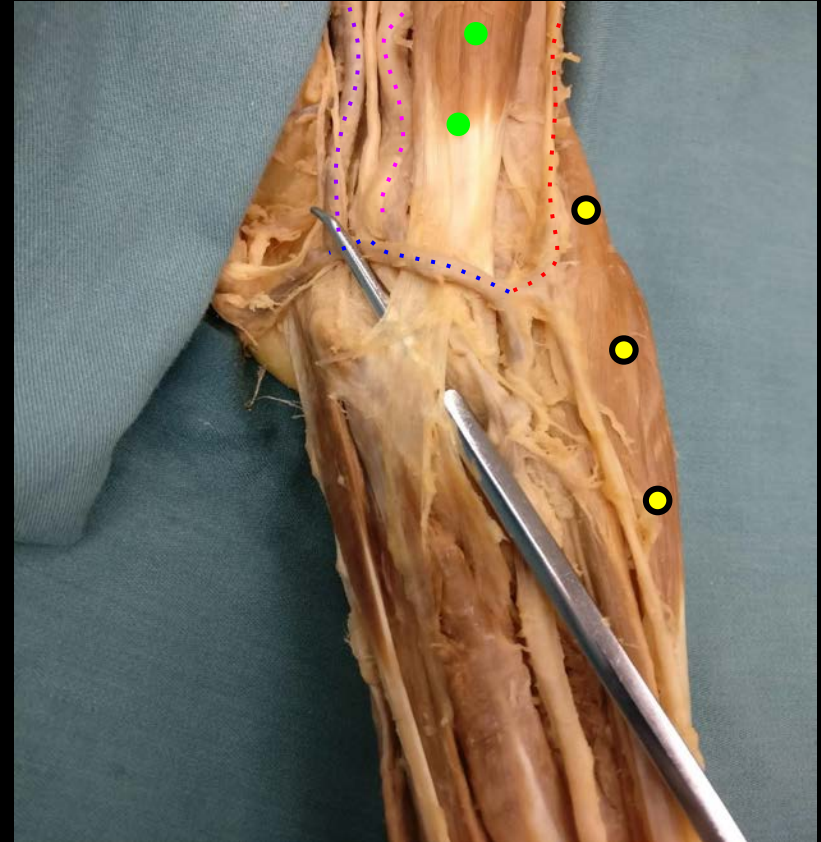
Cephalic Vein

Basilic Vein

Median Cubital Vein

Biceps Brachi

Brachioradialis



a place of mind
THE UNIVERSITY OF BRITISH COLUMBIA

Faculty of Medicine

Southern Medical Program

The Left Ventral Forearm

Structures in View:

Radial Artery

Flexor Pollicis Longus

Pronator Quadratus (Deep)

Median Nerve

Flexor Digitorum Superficialis

Palmaris Longus (Reflected)



a place of mind
THE UNIVERSITY OF BRITISH COLUMBIA

Faculty of Medicine

Southern Medical Program

The Left Ventral Forearm

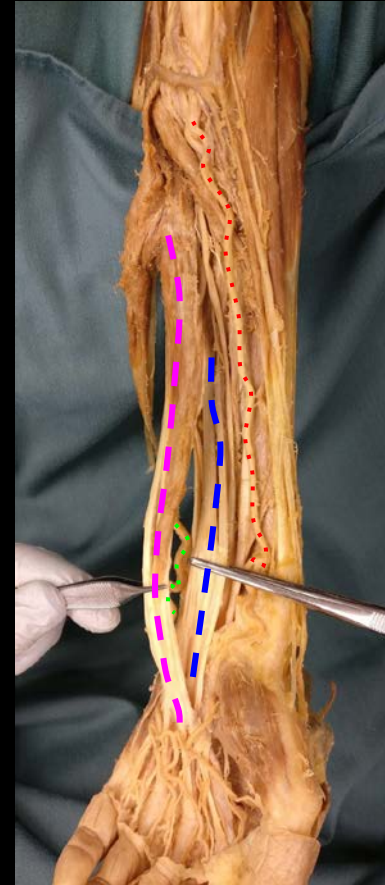
Structures in View:

Flexor Digitorum Superficialis

Flexor Digitorum Profundus

Radial Artery

Ulnar Artery



a place of mind
THE UNIVERSITY OF BRITISH COLUMBIA

Faculty of Medicine

Southern Medical Program

The Anatomical Snuff Box

Structures in View:

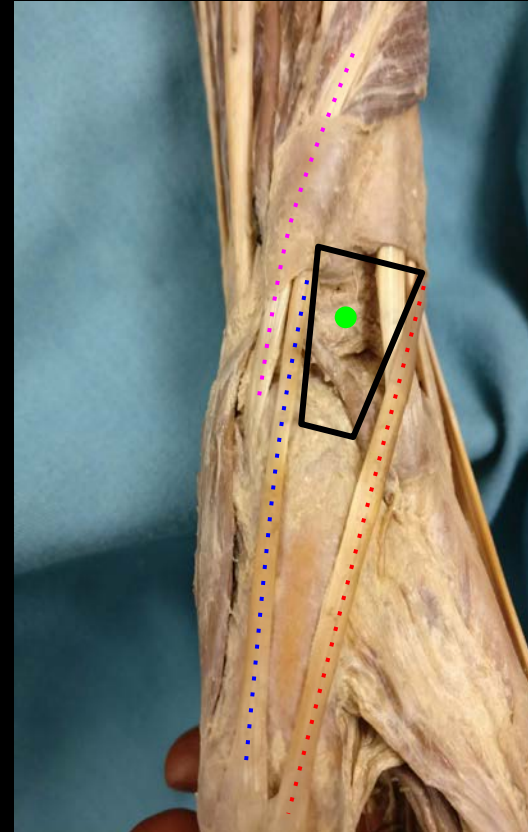
Anatomical Snuff Box

Abductor Pollicis Longus Tendon

Extensor Pollicis Brevis Tendon

Extensor Pollicis Longus Tendon

Scaphoid Bone (Deep)



a place of mind
THE UNIVERSITY OF BRITISH COLUMBIA

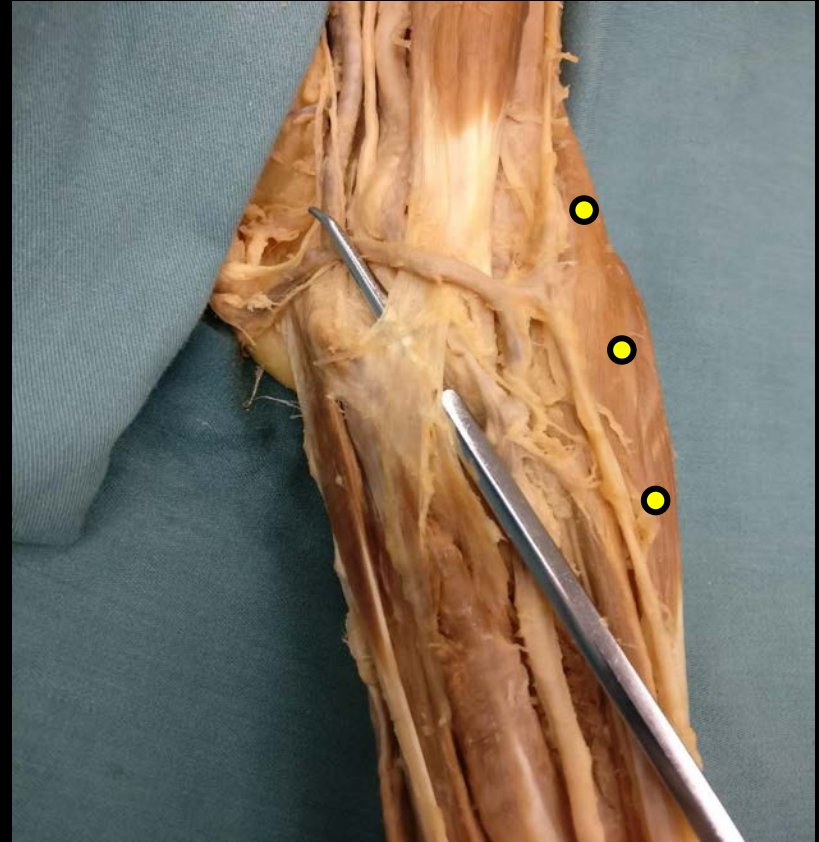
Faculty of Medicine

Southern Medical Program

Brachioradialis

Action: Flexion of Forearm at the Elbow

Innervation: Radial Nerve



a place of mind
THE UNIVERSITY OF BRITISH COLUMBIA

Faculty of Medicine

Southern Medical Program

Brachioradialis

Action: Flexion of Forearm at Elbow

Innervation: Radial Nerve



a place of mind
THE UNIVERSITY OF BRITISH COLUMBIA

Faculty of Medicine

Southern Medical Program

Extensor Carpi Radialis Longus

Action: Extension of Wrist

Innervation: Radial Nerve



a place of mind
THE UNIVERSITY OF BRITISH COLUMBIA

Faculty of Medicine

Southern Medical Program

Extensor Carpi Radialis Brevis

Action: Extension of Wrist

Innervation: Radial Nerve



a place of mind
THE UNIVERSITY OF BRITISH COLUMBIA

Faculty of Medicine

Southern Medical Program

Extensor Digitorum

Action: Extension of Digits II-V

Innervation: Radial Nerve



a place of mind
THE UNIVERSITY OF BRITISH COLUMBIA

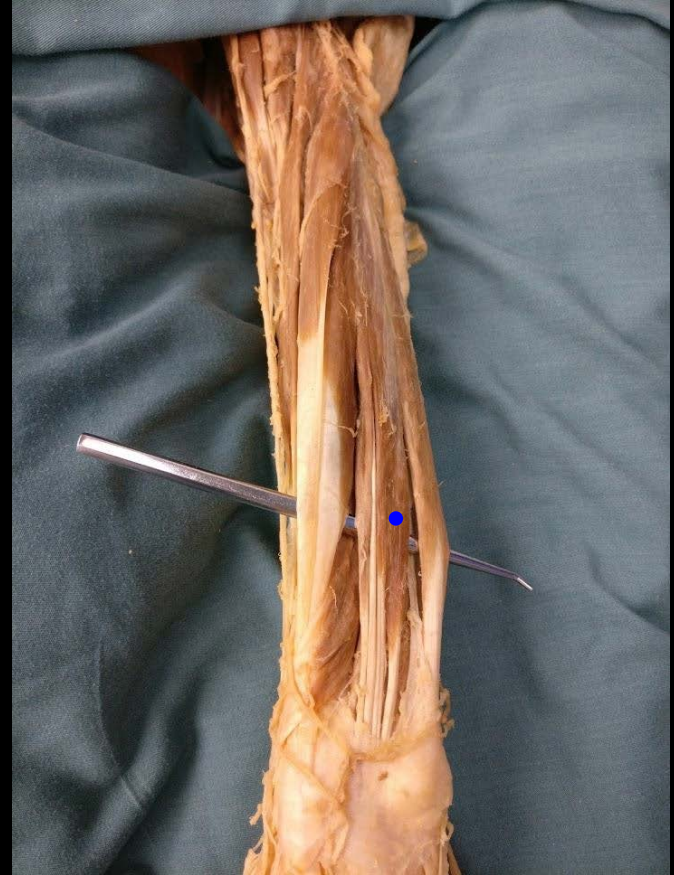
Faculty of Medicine

Southern Medical Program

Extensor Digiti Minimi

Action: Extension of Pinky Finger

Innervation: Radial Nerve



a place of mind
THE UNIVERSITY OF BRITISH COLUMBIA

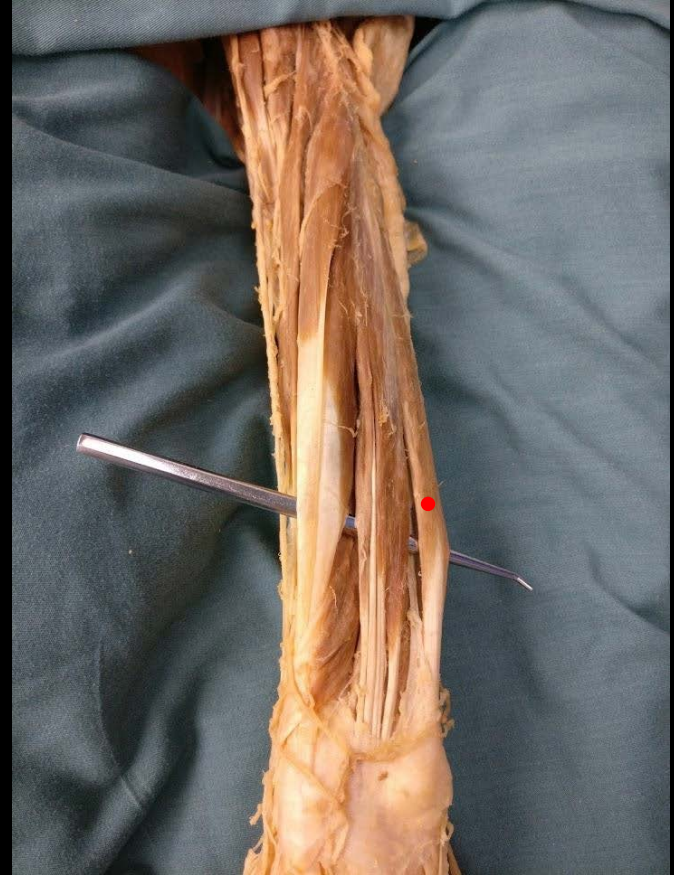
Faculty of Medicine

Southern Medical Program

Extensor Carpi Ulnaris

Action: Extension of Wrist

Innervation: Radial Nerve



a place of mind
THE UNIVERSITY OF BRITISH COLUMBIA

Faculty of Medicine

Southern Medical Program

Abductor Pollicis Longus Muscle

Action: Abduction of Thumb

Innervation: Radial Nerve



a place of mind
THE UNIVERSITY OF BRITISH COLUMBIA

Faculty of Medicine

Southern Medical Program

Extensor Pollicis Brevis Muscle

Action: Extension of Thumb

Innervation: Radial Nerve



a place of mind
THE UNIVERSITY OF BRITISH COLUMBIA

Faculty of Medicine

Southern Medical Program

Extensor Pollicis Longus Muscle

Action: Extension of Thumb

Innervation: Radial Nerve



a place of mind
THE UNIVERSITY OF BRITISH COLUMBIA

Faculty of Medicine

Southern Medical Program

Extensor Indicis

Action: Extension of Index Finger

Innervation: Radial Nerve



a place of mind
THE UNIVERSITY OF BRITISH COLUMBIA

Faculty of Medicine

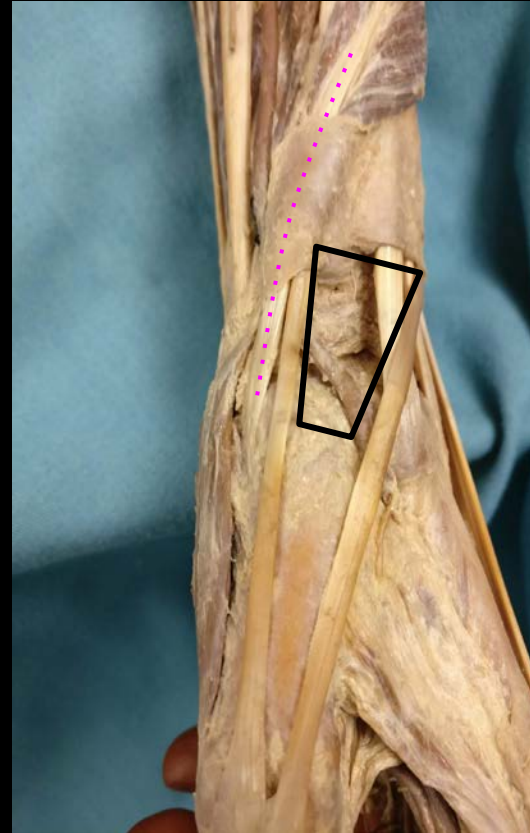
Southern Medical Program

Abductor Pollicis Longus

Action: Abduction of Thumb

Innervation: Radial Nerve

Snuff Box Outlined In Black



a place of mind
THE UNIVERSITY OF BRITISH COLUMBIA

Faculty of Medicine

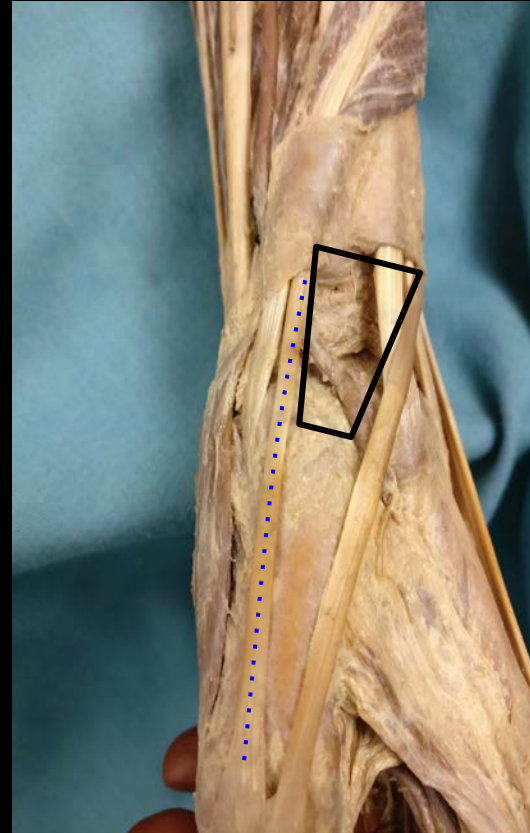
Southern Medical Program

Extensor Pollicis Brevis Tendon

Action: Extension of Thumb

Innervation: Radial Nerve

Snuff Box Outlined In Black



a place of mind
THE UNIVERSITY OF BRITISH COLUMBIA

Faculty of Medicine

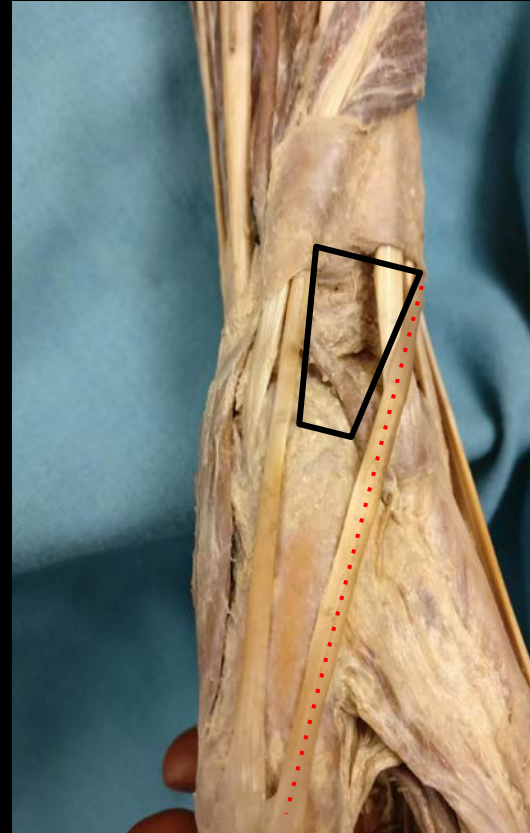
Southern Medical Program

Extensor Pollicis Longus Tendon

Action: Extension of Thumb

Innervation: Radial Nerve

Snuff Box Outlined In Black



a place of mind
THE UNIVERSITY OF BRITISH COLUMBIA

Faculty of Medicine

Southern Medical Program

Pronator Teres

Action: Pronation of Arm

Innervation: Median Nerve



a place of mind
THE UNIVERSITY OF BRITISH COLUMBIA

Faculty of Medicine

Southern Medical Program

Palmaris Longus

Action: Flexion of Wrist

Innervation: Median Nerve



a place of mind
THE UNIVERSITY OF BRITISH COLUMBIA

Faculty of Medicine

Southern Medical Program

Flexor Carpi Radialis

Action: Flexion of Wrist

Innervation: Median Nerve



a place of mind
THE UNIVERSITY OF BRITISH COLUMBIA

Faculty of Medicine

Southern Medical Program

Flexor Carpi Ulnaris

Action: Flexion of Wrist

Innervation: Ulnar Nerve



a place of mind
THE UNIVERSITY OF BRITISH COLUMBIA

Faculty of Medicine

Southern Medical Program

Flexor Digitorum Superficialis

Action: Flexion of PIP Joints

Innervation: Median Nerve



a place of mind
THE UNIVERSITY OF BRITISH COLUMBIA

Faculty of Medicine

Southern Medical Program

Flexor Pollicis Longus

Action: Flexion of Thumb

Innervation: Median Nerve



a place of mind
THE UNIVERSITY OF BRITISH COLUMBIA

Faculty of Medicine

Southern Medical Program

Pronator Quadratus

Action: Pronation

Innervation: Median Nerve



a place of mind
THE UNIVERSITY OF BRITISH COLUMBIA

Faculty of Medicine

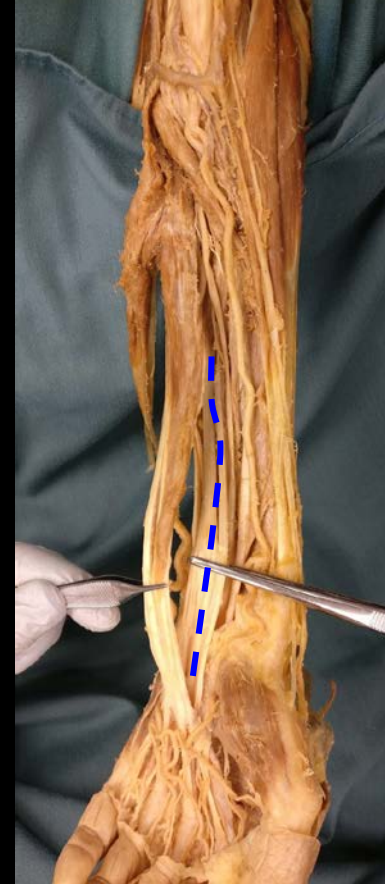
Southern Medical Program

Flexor Digitorum Profundus

Action: Flexion of DIP Joints

Innervation: Median Nerve for Radial Side
Ulnar Nerve for

Ulnar Side



a place of mind
THE UNIVERSITY OF BRITISH COLUMBIA

Faculty of Medicine

Southern Medical Program

References

- Photo source: <https://nyamcenterforhistory.org/tag/andreas-vesalius/>
- Kurt McBurney's Epic Notes & Drawings!



a place of mind
THE UNIVERSITY OF BRITISH COLUMBIA

Faculty of Medicine

Southern Medical Program

DE HVMANI CORPORIS FABRICA LIBER I. 163
HVMANI COR-
SIMVL COMPACTO.
EX FACIE EXPRES.
PORIS OSSIVM
RPN ANTERIORI
SID.



MEDD 422 ANATOMY



KURT MCBURNEY, ASSOCIATE TEACHING PROFESSOR - IMP
NICHOLAS BYERS - SMP
PETER BAUMEISTER - SMP



a place of mind

THE UNIVERSITY OF BRITISH COLUMBIA

Faculty of Medicine

Southern Medical Program

Proof of Permission for Cadaveric Photos



Island Medical Program

The University of British Columbia
Faculty of Medicine MD
Undergraduate Program
delivered in collaboration with
the University of Victoria

Kurt McBurney
Associate Teaching Professor
Island Medical Program/Division of Medical Sciences
University of British Columbia and University of Victoria
mcburney@uvic.ca
250-472-5336 (office)
250-418-1542 (cell)

To Whom It May Concern:

During 6 week FLEX cycle of April/May 2018, Peter Baumeister and Nick Byers completed a dissection/learning resource project here at the Island Medical Program. They completed dissections of the lower limb corresponding to the upcoming fall gross anatomy laboratories.

As part of this project they took photographs of their dissections with the purpose of creating digital index cards which will help students in future labs with these lower limb dissections. Long before they began the project they asked for, and received, my permission to take and subsequently use the photos to create the digital index cards.

As a final check—as protection for themselves, their work and my responsibility for cadaveric donations—I will vet the final versions of the digital index cards to ensure there are no concerns regarding the photographs and the cadaveric material.

Thank you,

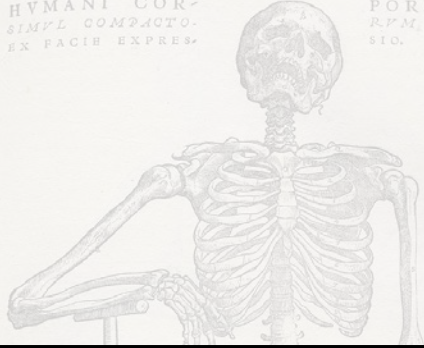
Kurt McBurney



a place of mind
THE UNIVERSITY OF BRITISH COLUMBIA

Faculty of Medicine
Southern Medical Program

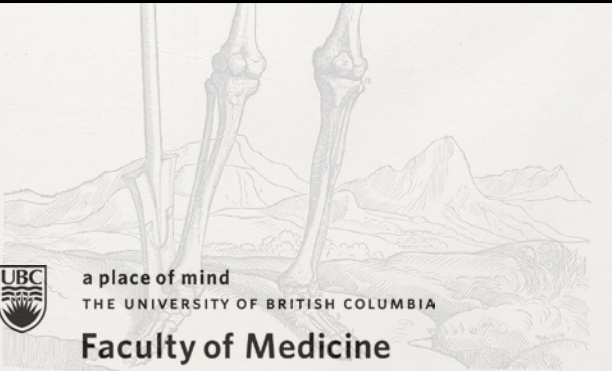
DE HVMANI CORPORIS FABRICA LIBER I. 163
HVMANI COR-
SIMVL COMPACTO.
EX FACIE EXPRES.
PORIS OSSIVM
RPN ANTERIORI
SID.



LABORATORY 4

~

FOREGUT & VASCULATURE



a place of mind
THE UNIVERSITY OF BRITISH COLUMBIA

Faculty of Medicine

Southern Medical Program

INDEX

Abdominal Aorta
Anterior Surface Of Stomach
Antrum Of Stomach
Bile Duct (Common Bile Duct)
Body Of Pancreas
Body Of Stomach
Cardia Of Stomach
Caudate Lobe Of Liver
Celiac Trunk
Common Hepatic Artery
Common Hepatic Duct
Cystic Artery
Cystic Duct
Duodenojejunal Junction
First Part Of Duodenum
Fourth Part Of Duodenum
Fundus Of Stomach
Gallbladder
Gastroduodenal Artery
Greater Curvature Of Stomach
Head Of Pancreas
Hepatic Portal Vein
Hepatic Proper
Hepatic Veins
Inferior Vena Cava
Left Gastric Artery
Left Gastroepiploic Artery
Left Hepatic Artery
Left Hepatic Duct
Left Lobe Of Liver
Lesser Curvature Of Stomach
Major Duodenal Papilla
Minor Duodenal Papilla
Neck Of Pancreas
Posterior Surfaces Of Stomach
Pylorus Of Stomach
Quadrangle Lobe Of Liver
Right Gastric Artery
Right Hepatic Duct
Right Lobe Of Liver
Second Part Of Duodenum
Spleen
Splenic Vein
Splenic Artery
Superior Mesenteric Vein
Tail Of Pancreas
Third Part Of Duodenum

***Items in red are not labeled in slide package**



a place of mind
THE UNIVERSITY OF BRITISH COLUMBIA

Faculty of Medicine

Southern Medical Program

The Stomach

Structures in View:

Cardia

Fundus

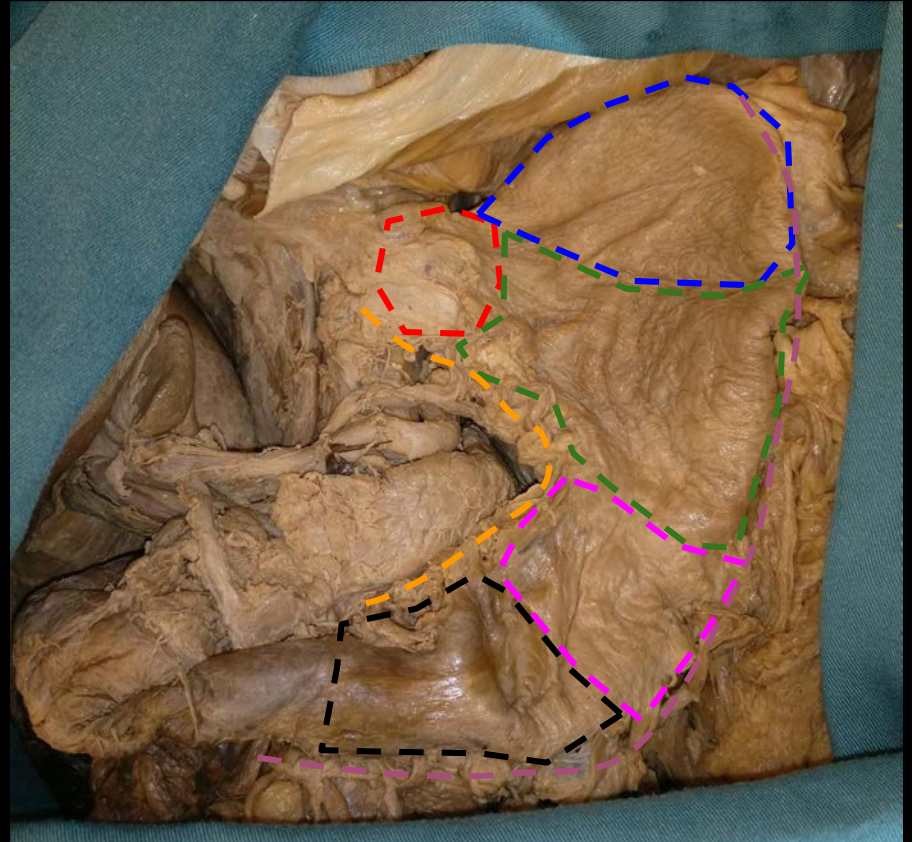
Body

Greater Curvature

Lesser Curvature

Antrum

Pylorus



a place of mind
THE UNIVERSITY OF BRITISH COLUMBIA

Faculty of Medicine

Southern Medical Program

The Stomach

Structures in View:

Right Gastroepiploic Artery

Splenic Artery

Celiac Trunk

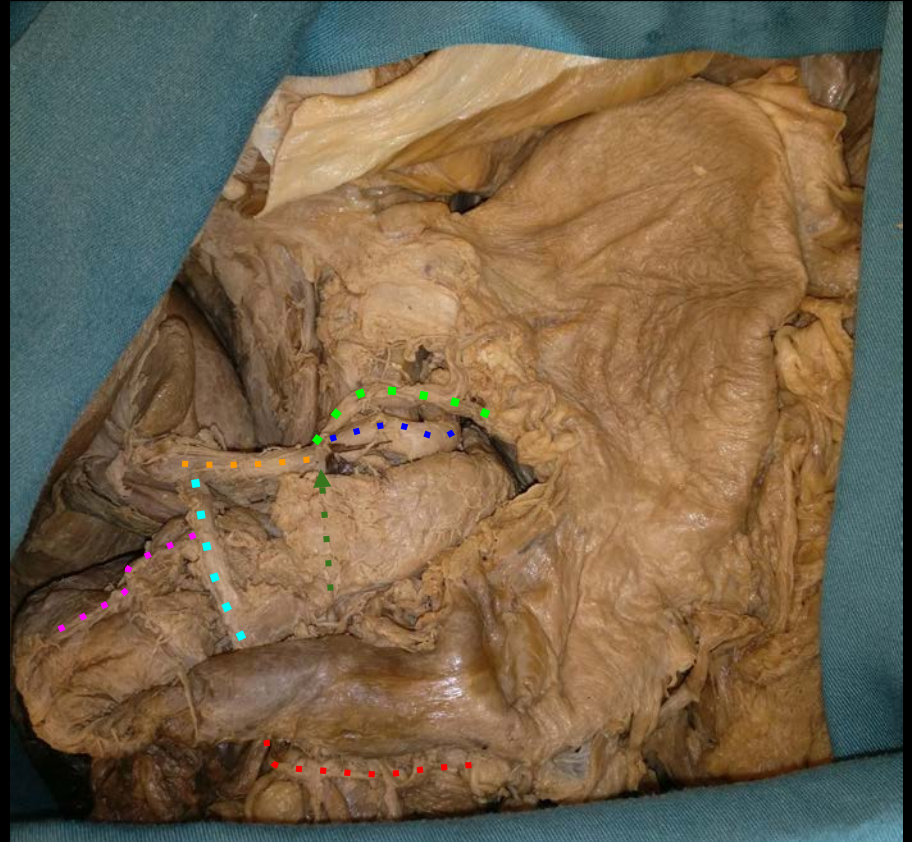
Greater Curvature

Common Hepatic Artery

Right Gastric Artery

Left Gastric Artery

Gastrooduodenal Artery



a place of mind
THE UNIVERSITY OF BRITISH COLUMBIA

Faculty of Medicine

Southern Medical Program

The Duodenum

Structures in View:

First Part

Second Part

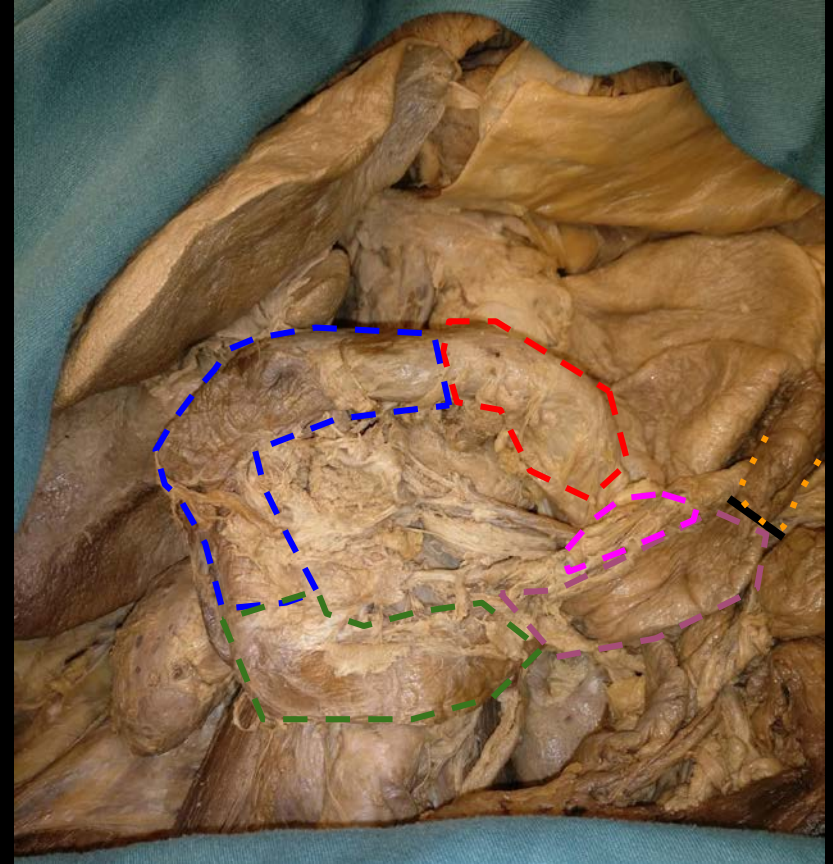
Third Part

Fourth Part

Duodenojejunal Junction

Jejunum

Ligament of Trietz (Suspensory muscle of duodenum)



a place of mind
THE UNIVERSITY OF BRITISH COLUMBIA

Faculty of Medicine

Southern Medical Program

The Pancreas

Structures in View:

Head

Neck

Body

Liver

Stomach

Duodenum



a place of mind
THE UNIVERSITY OF BRITISH COLUMBIA

Faculty of Medicine

Southern Medical Program

The Spleen

Structures in View:

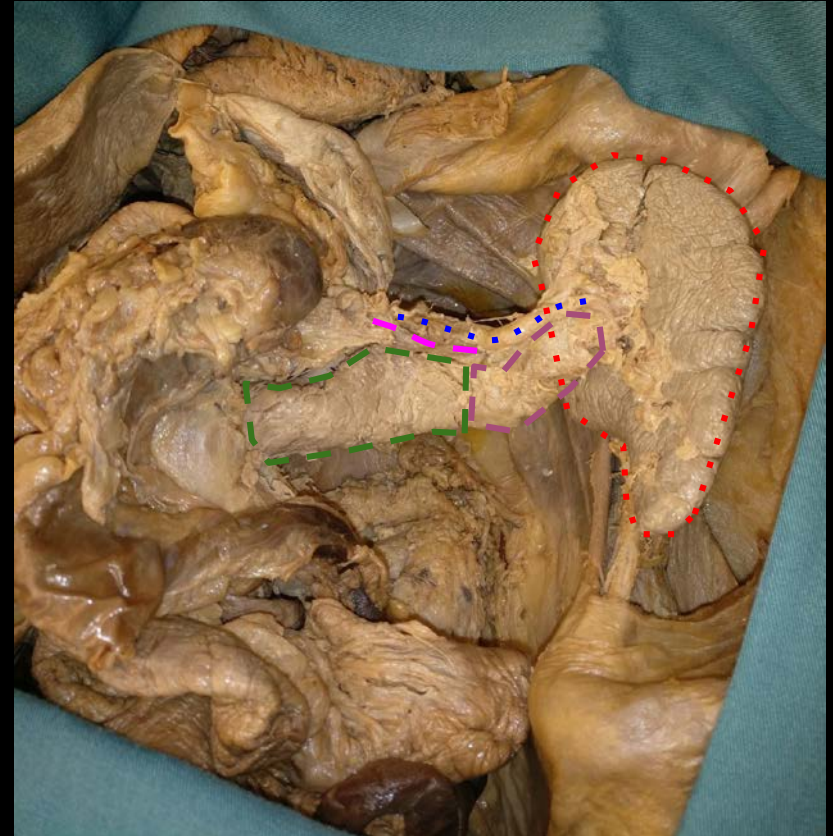
The Spleen

Splenic Artery

Splenic Vein (Barely Visible)

Body of Pancreas

Tail of Pancreas



a place of mind
THE UNIVERSITY OF BRITISH COLUMBIA

Faculty of Medicine

Southern Medical Program

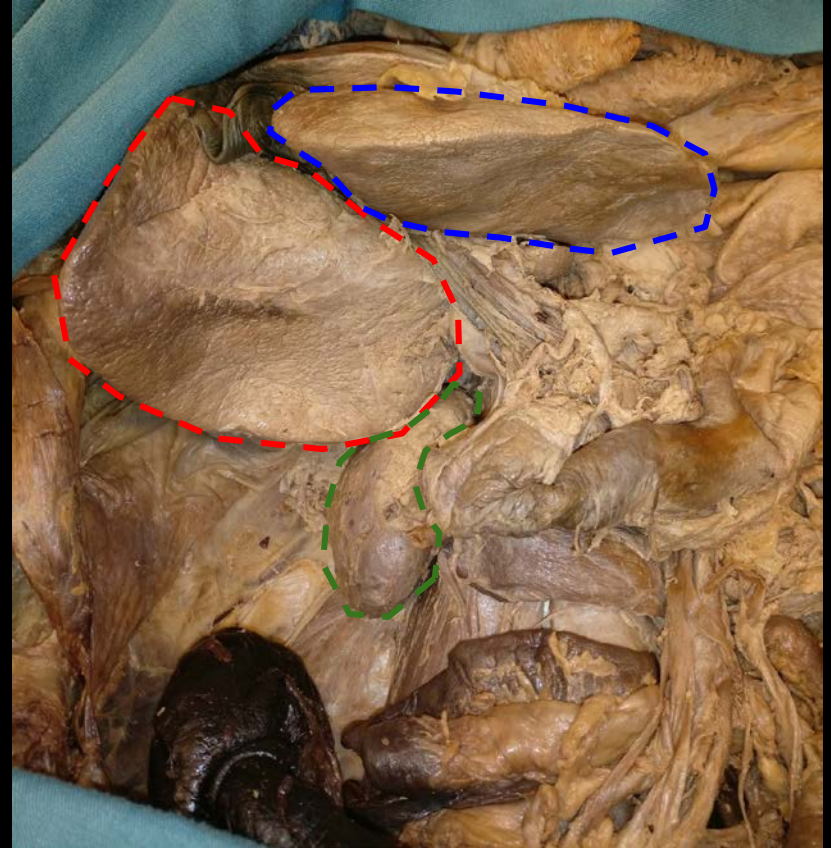
The Liver

Structures in View:

Right Lobe (Inferior View)

Left Lobe (Inferior View)

Kidney (Right)



a place of mind
THE UNIVERSITY OF BRITISH COLUMBIA

Faculty of Medicine

Southern Medical Program

The Liver

Structures in View:

Right Lobe (Visceral Surface)

Left Lobe (Visceral Surface)

Quadrante Lobe (Visceral Surface)

Gallbladder

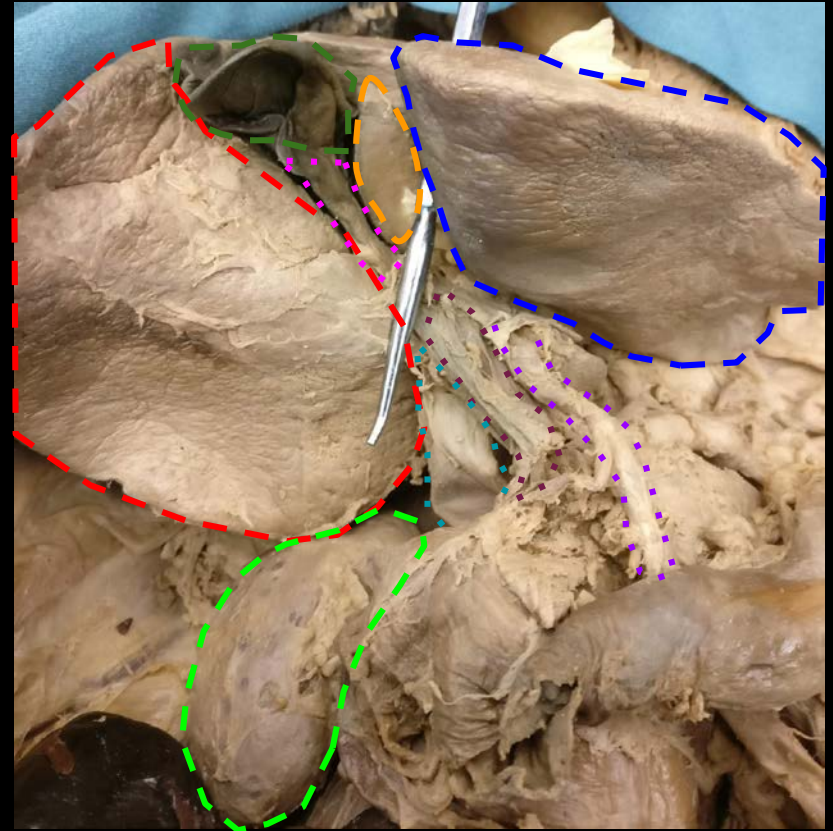
Cystic Duct

Right Kidney

Common Bile Duct

Common Hepatic Artery (Becomes Hepatic Proper)

Hepatic Portal Vein



a place of mind
THE UNIVERSITY OF BRITISH COLUMBIA

Faculty of Medicine

Southern Medical Program

Vasculature of the Abdomen

Structures in View:

Abdominal Aorta

Inferior Vena Cava

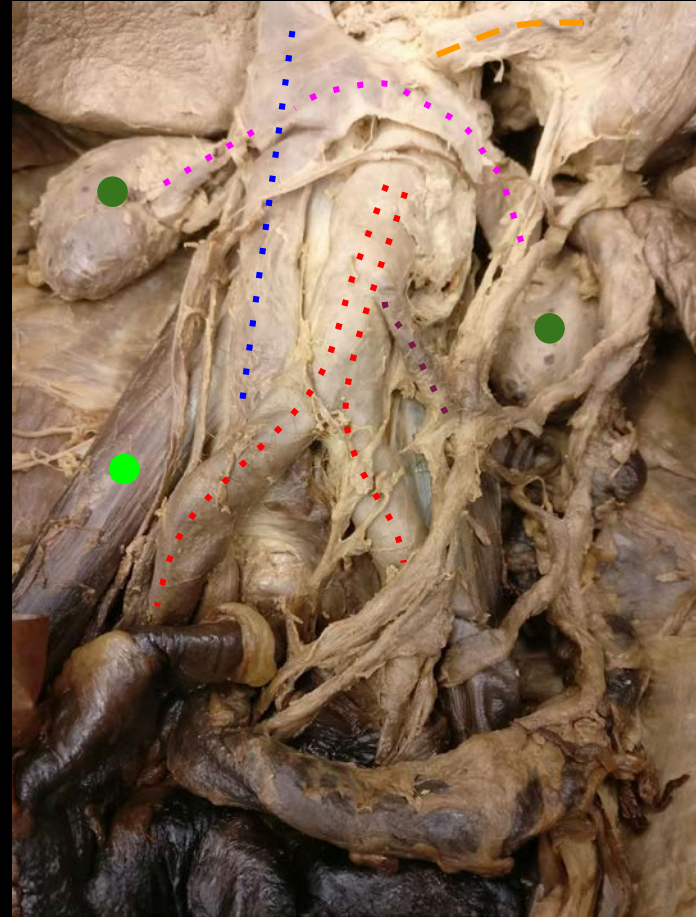
Kidneys

Renal Veins

Psoas

Inferior Mesenteric Artery

Superior Mesenteric Artery



a place of mind
THE UNIVERSITY OF BRITISH COLUMBIA

Faculty of Medicine

Southern Medical Program

The Liver

Structures in View:

Pancreas

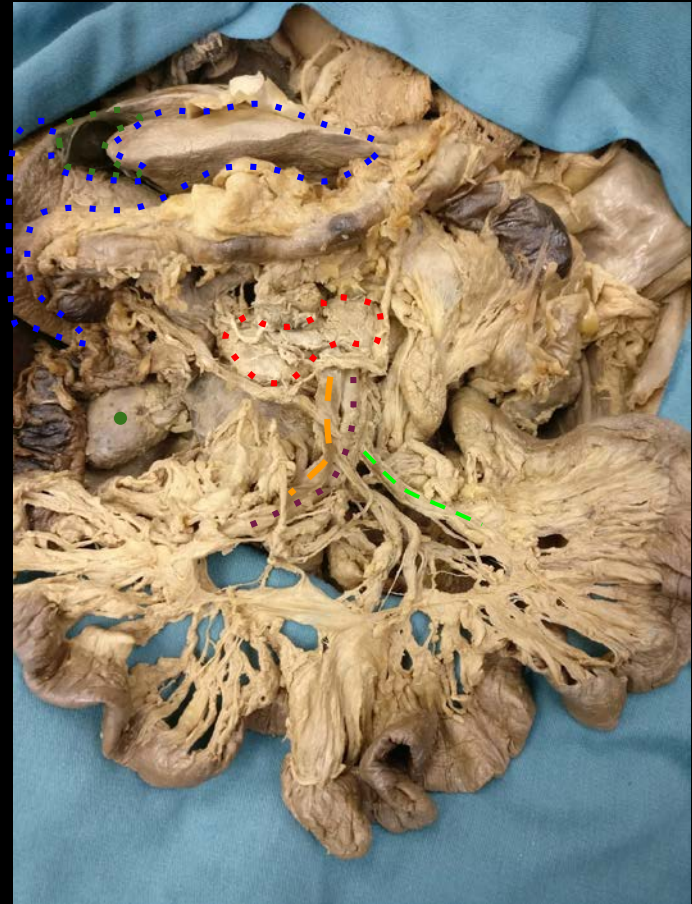
Liver

Kidney (Right)

Jejunal Artery

Superior Mesenteric Artery

Superior Mesenteric Vein



a place of mind
THE UNIVERSITY OF BRITISH COLUMBIA

Faculty of Medicine

Southern Medical Program

References

- Photo source: <https://nyamcenterforhistory.org/tag/andreas-vesalius/>



a place of mind
THE UNIVERSITY OF BRITISH COLUMBIA

Faculty of Medicine

Southern Medical Program

DE HVMANI CORPORIS FABRICA LIBER I. 169
HVMANI COR-
SIMVL COMPACTO.
EX FACIE EXPRES.
PORIS OSSIVM
RPN ANTERIORI
SID.



MEDD 422 ANATOMY



KURT MCBURNEY, ASSOCIATE TEACHING PROFESSOR - IMP
NICHOLAS BYERS - SMP
PETER BAUMEISTER - SMP



a place of mind

THE UNIVERSITY OF BRITISH COLUMBIA

Faculty of Medicine

Southern Medical Program

Proof of Permission for Cadaveric Photos



Island Medical Program

The University of British Columbia
Faculty of Medicine MD
Undergraduate Program
delivered in collaboration with
the University of Victoria

Kurt McBumey
Associate Teaching Professor
Island Medical Program/Division of Medical Sciences
University of British Columbia and University of Victoria
mcbumey@uvic.ca
250-472-5336 (office)
250-418-1542 (cell)

To Whom It May Concern:

During 6 week FLEX cycle of April/May 2018, Peter Baumeister and Nick Byers completed a dissection/learning resource project here at the Island Medical Program. They completed dissections of the lower limb corresponding to the upcoming fall gross anatomy laboratories.

As part of this project they took photographs of their dissections with the purpose of creating digital index cards which will help students in future labs with these lower limb dissections. Long before they began the project they asked for, and received, my permission to take and subsequently use the photos to create the digital index cards.

As a final check—as protection for themselves, their work and my responsibility for cadaveric donations—I will vet the final versions of the digital index cards to ensure there are no concerns regarding the photographs and the cadaveric material.

Thank you,

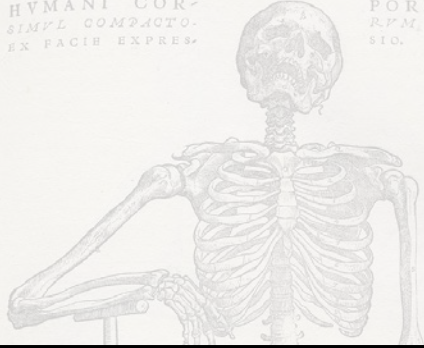
Kurt McBumey



a place of mind
THE UNIVERSITY OF BRITISH COLUMBIA

Faculty of Medicine
Southern Medical Program

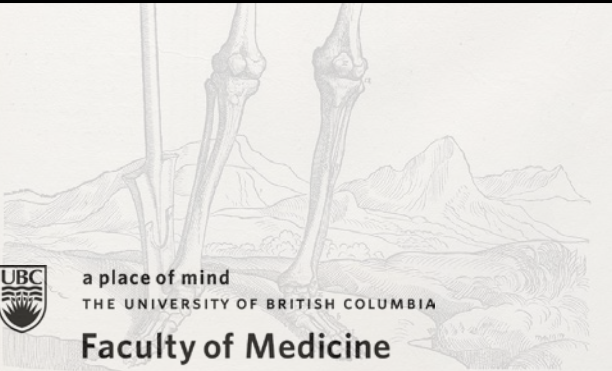
DE HVMANI CORPORIS FABRICA LIBER I. 163
HVMANI COR-
SIMVL COMPACTO.
EX FACIE EXPRES.
PORIS OSSIVM
RPN ANTERIORI
SID.



LABORATORY 5

~

FEMALE PELVIS



a place of mind
THE UNIVERSITY OF BRITISH COLUMBIA

Faculty of Medicine

Southern Medical Program

INDEX

Ala
Anal Triangle
Anterior Superior Iliac Spine
Broad Ligament
Bulb Of Vestibule
Bulbospongiosus Muscle
Cervix
Clitoris
Coccyx
Corpus Cavernosum
Crest Of Ilium
External Anal Sphincter
External Iliac Artery
Facet For Sacroiliac Joint
Greater Sciatic Foramen
Hip (Pelvic) Bone
Inferior Vesicular Artery
Internal Iliac Artery
Ischial Spine
Ischial Tuberosity
Ischiocavernosus Muscle
Ischiopubic (Pubic) Arch
Lesser Sciatic Foramen
Levator Ani Muscle
Ligament Of Ovary
Mesometrium
Mesosalpinx
Mesovarium
Obturator Foramen
Obturator Internus Muscle
Ovary
Piriformis Muscle
Prostate
Pubic Crest
Pubic Symphysis
Pubic Tubercle
Pudendal Artery
Pudendal Nerve
Pudendal Vein
Rectouterine Pouch
Rectum
Renal Pelvis
Round Ligament Of Uterus
Sacrospinous Ligament
Sacrotuberous Ligament
Sacrum
Superficial Transverse Perineal Muscle
Superior Vesicular Artery
Suspensory Ligament Of Ovary
Ovarian Artery
Umbilical Artery
Ureter
Urethra
Urinary Bladder
Uterine Artery
Uterus



a place of mind
THE UNIVERSITY OF BRITISH COLUMBIA

Faculty of Medicine

Southern Medical Program

Pelvic Osteology

Structures in View:

Ala Of Sacrum

Pubic Symphysis

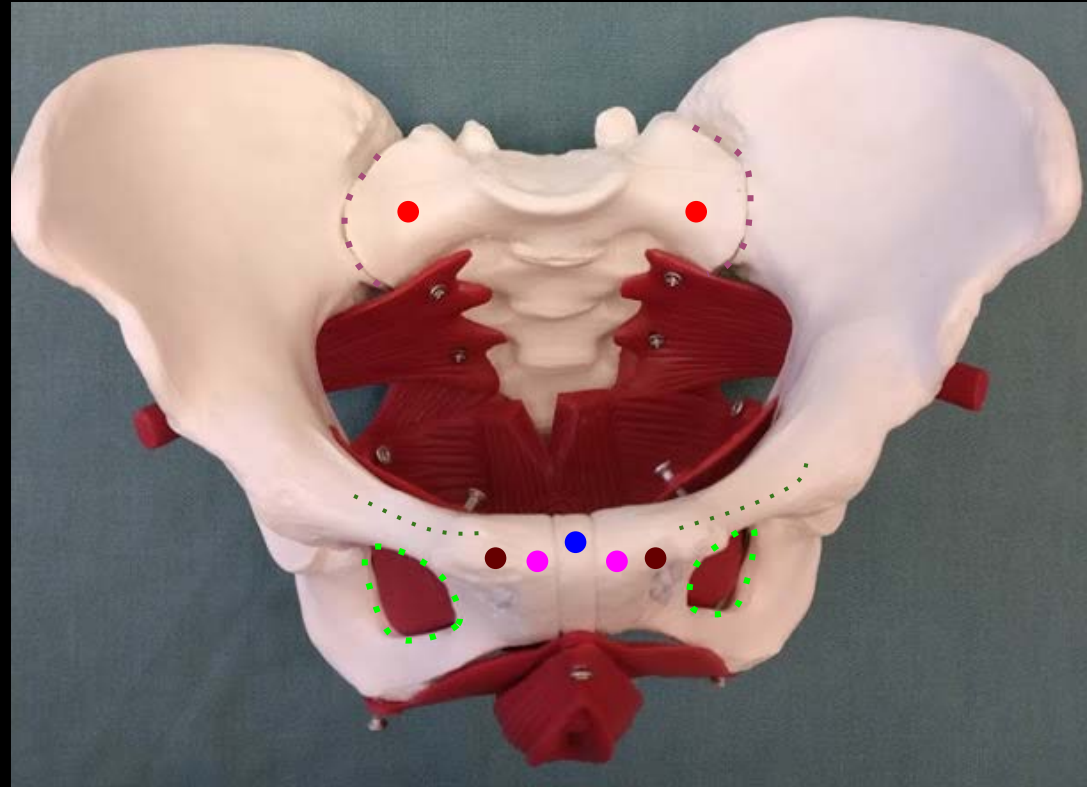
Ischiopubic Arch

Sacroiliac Joint

Obturator Foramen

Pubic Tubercle

Pubic Crest



a place of mind
THE UNIVERSITY OF BRITISH COLUMBIA

Faculty of Medicine

Southern Medical Program

Pelvic Osteology

Structures in View:

Coccyx

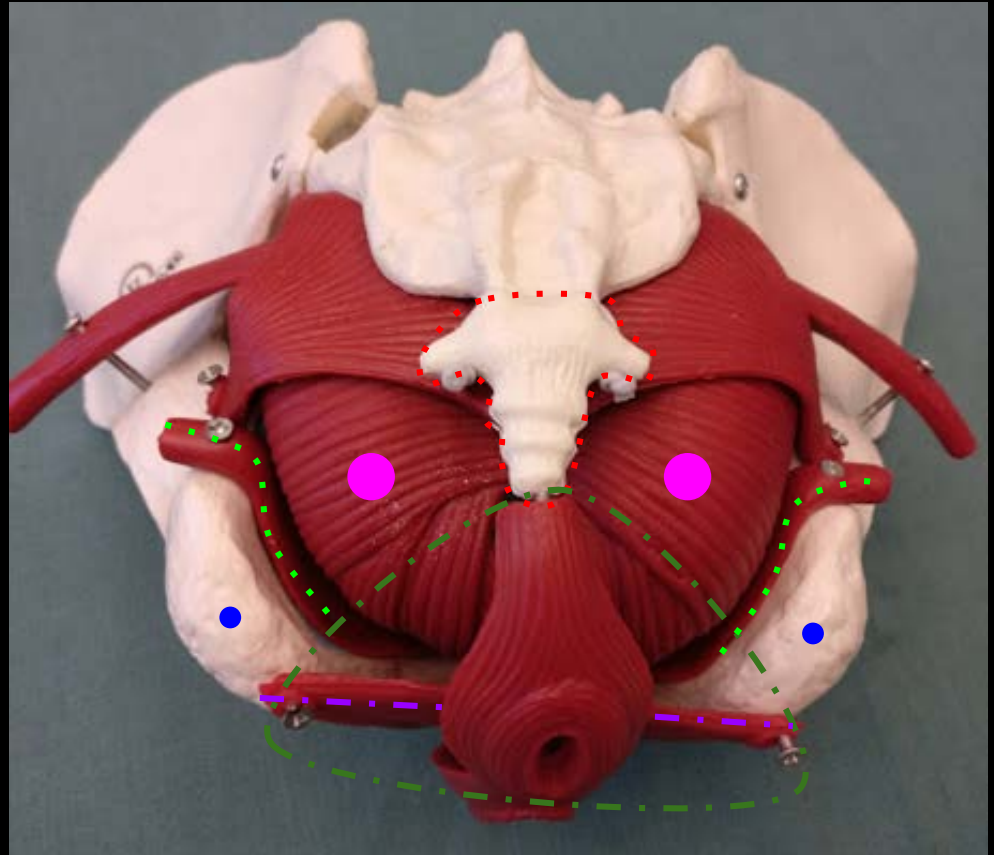
Ischial Tuberosity

Anal Triangle

Obturator Internus

Levator Ani

Superficial Transverse Perineal Muscle



a place of mind
THE UNIVERSITY OF BRITISH COLUMBIA

Faculty of Medicine

Southern Medical Program

Right Pelvis (Hip Bone)

Structures in View:

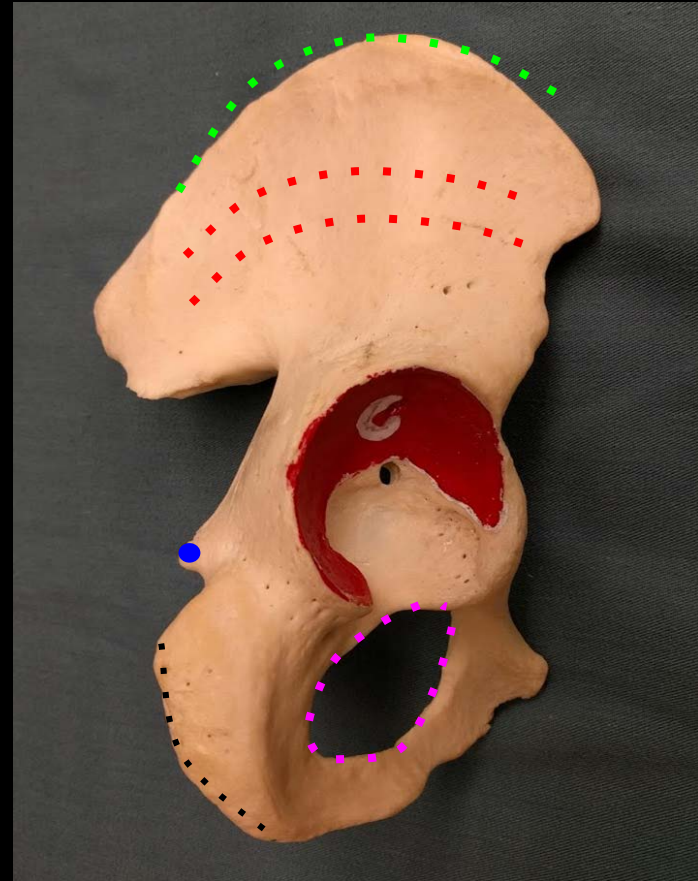
Gluteal Surface

Obturator Foramen

Iliac Crest

Ischial Spine

Ischial Tuberosity



a place of mind
THE UNIVERSITY OF BRITISH COLUMBIA

Faculty of Medicine

Southern Medical Program

Pelvic Osteology

Structures in View:

Pubic Symphysis

Ischiopubic Arch

Urogenital Triangle

Bulbospongiosus

Ischiocavernosus

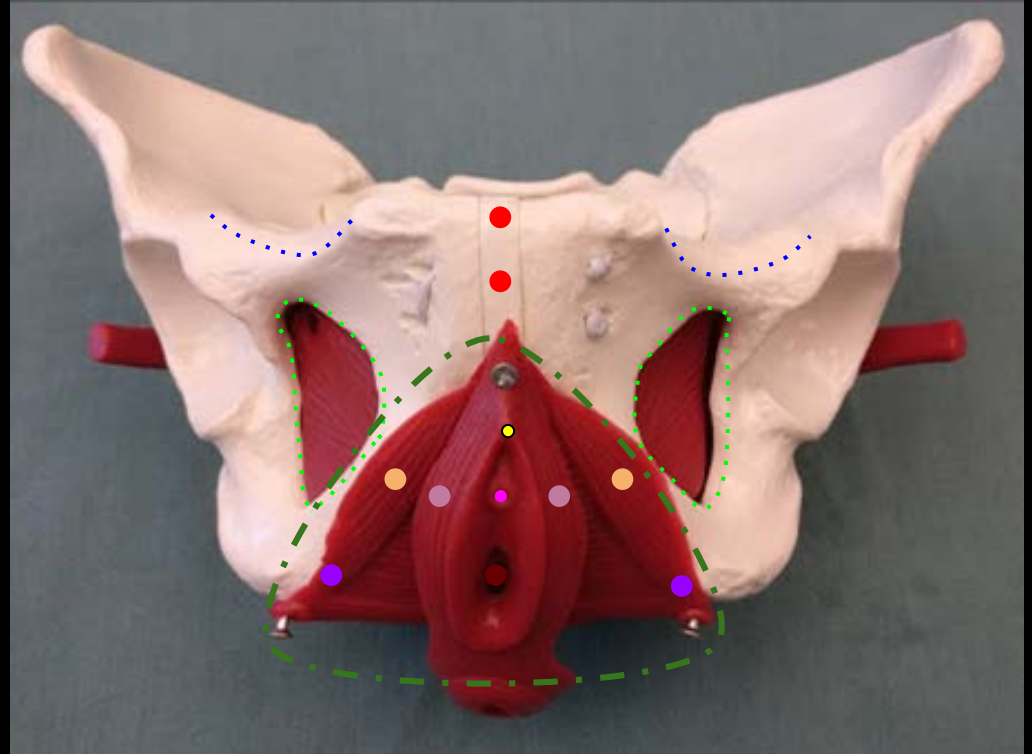
Urethra

Obturator Foramen

Vagina

Glans Of Clitoris

Crura Of Clitoris (Covered by
Ischiocavernosus Muscle)



a place of mind
THE UNIVERSITY OF BRITISH COLUMBIA

Faculty of Medicine

Southern Medical Program

Female Pelvis

Structures in View:

Urinary Bladder

Vesicouterine Pouch

Uterus

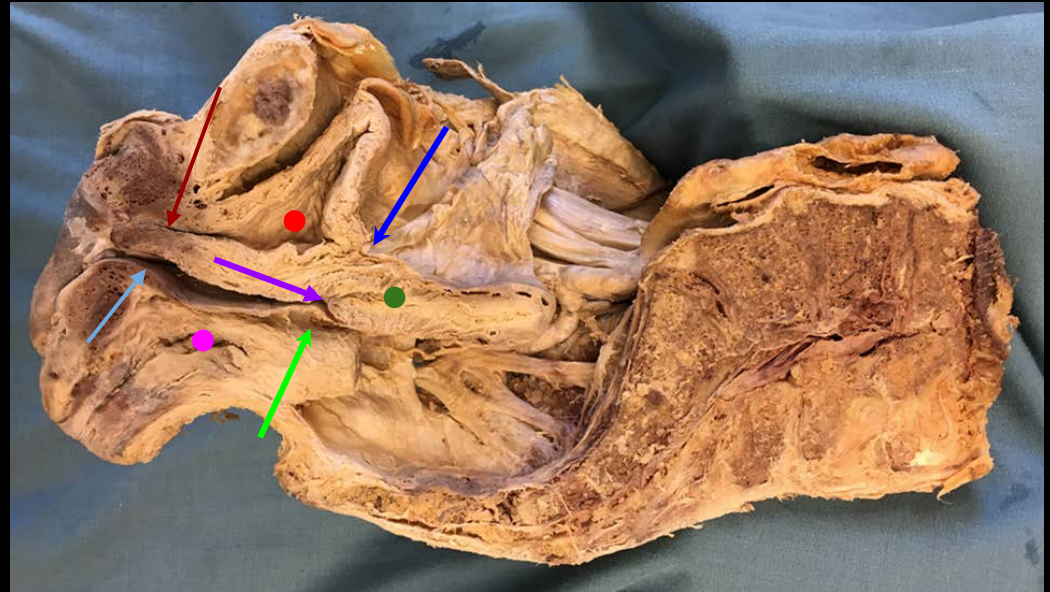
Rectum

Rectouterine Pouch

Vagina

Urethra

Cervix



a place of mind
THE UNIVERSITY OF BRITISH COLUMBIA

Faculty of Medicine

Southern Medical Program

Female Pelvis

Structures in View:

Ovary

Suspensory Ligament Of Ovary

Ligament Of Ovary

Round Ligament Of Uterus

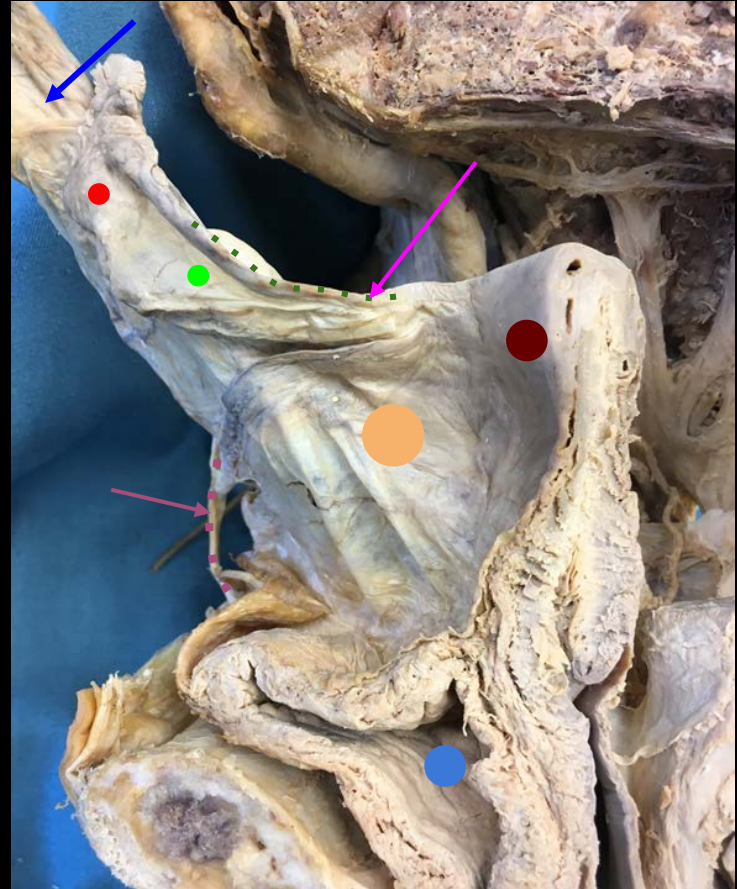
Broad Ligament (Comprised Of 3 Parts)

Mesosalpinx (Covering Fallopian Tube)

Mesovarium (Covering Ovary)

Mesometrium (Covering Uterus)

Bladder



a place of mind
THE UNIVERSITY OF BRITISH COLUMBIA

Faculty of Medicine

Southern Medical Program

Female Pelvis

Structures in View:

Common Iliac Artery

Internal Iliac Artery

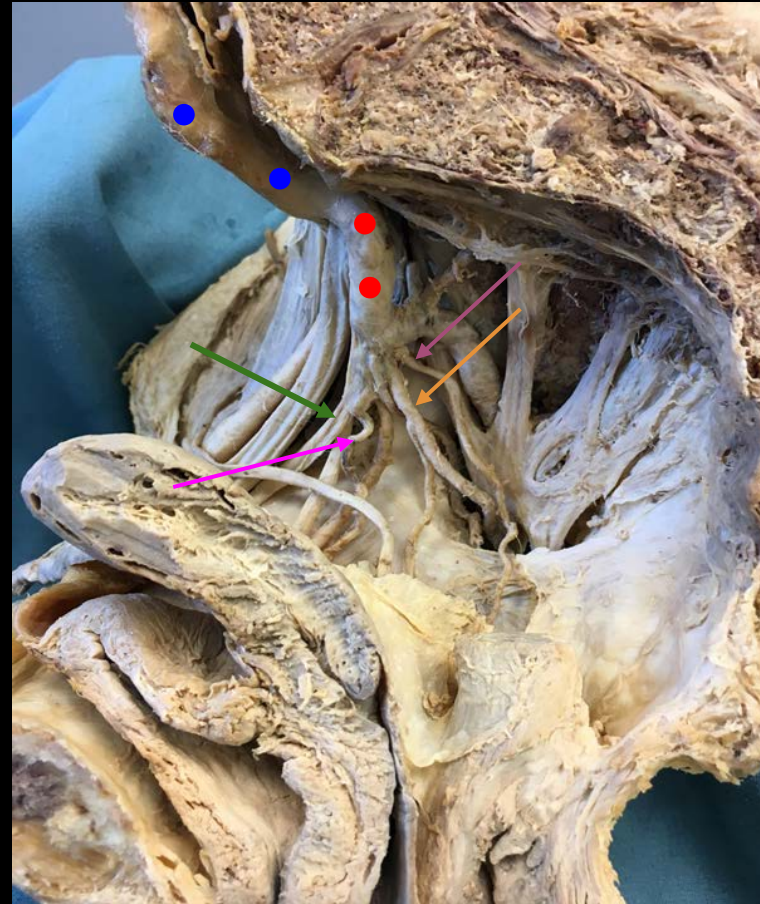
Obliterated Umbilical Artery

Obturator Artery

Pudendal Artery

Uterine Artery

Superior Vesicular Artery



a place of mind
THE UNIVERSITY OF BRITISH COLUMBIA

Faculty of Medicine

Southern Medical Program

Pelvis

Structures in View:

Sacrum

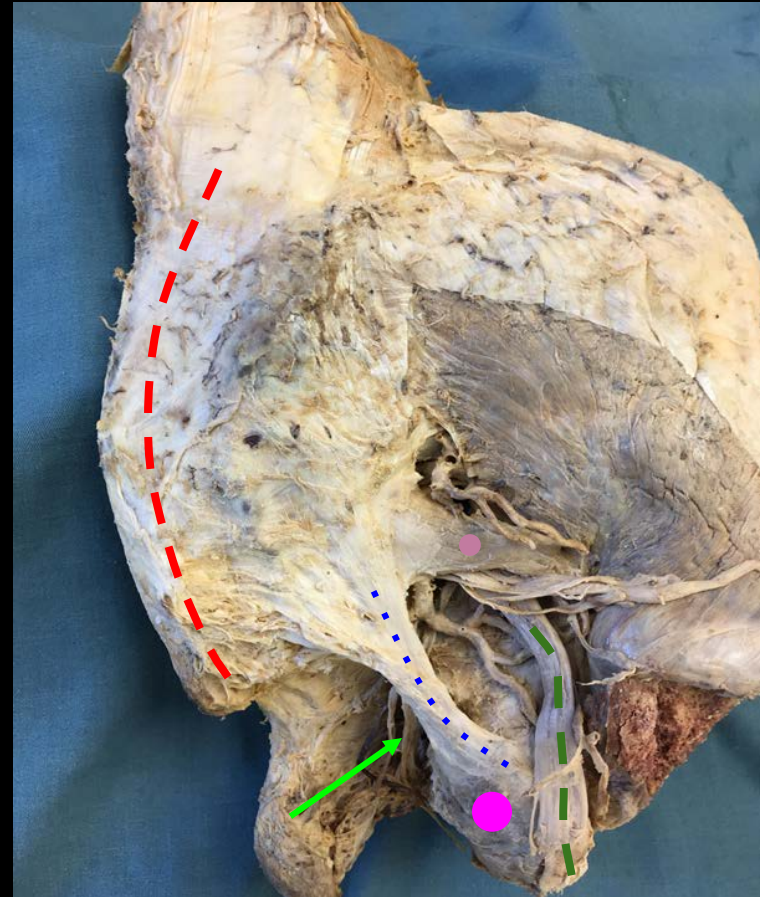
Sacrospinous Ligament

Sciatic Nerve

Piriformis Muscle

Ischial Tuberosity

Pudendal Nerve



a place of mind
THE UNIVERSITY OF BRITISH COLUMBIA

Faculty of Medicine

Southern Medical Program

References

- Photo source: <https://nyamcenterforhistory.org/tag/andreas-vesalius/>



a place of mind
THE UNIVERSITY OF BRITISH COLUMBIA

Faculty of Medicine

Southern Medical Program

DE HVMANI CORPORIS FABRICA LIBER I. 163
HVMANI COR-
SIMVL COMPACTO.
EX FACIE EXPRES.
PORIS OSSIVM
RPN ANTERIORI
SID.



MEDD 422 ANATOMY



KURT MCBURNEY, ASSOCIATE TEACHING PROFESSOR - IMP
NICHOLAS BYERS - SMP
PETER BAUMEISTER - SMP



a place of mind

THE UNIVERSITY OF BRITISH COLUMBIA

Faculty of Medicine

Southern Medical Program

Proof of Permission for Cadaveric Photos



Island Medical Program

The University of British Columbia
Faculty of Medicine MD
Undergraduate Program
delivered in collaboration with
the University of Victoria

Kurt McBumey
Associate Teaching Professor
Island Medical Program/Division of Medical Sciences
University of British Columbia and University of Victoria
mcbumey@uvic.ca
250-472-5336 (office)
250-418-1542 (cell)

To Whom It May Concern:

During 6 week FLEX cycle of April/May 2018, Peter Baumeister and Nick Byers completed a dissection/learning resource project here at the Island Medical Program. They completed dissections of the lower limb corresponding to the upcoming fall gross anatomy laboratories.

As part of this project they took photographs of their dissections with the purpose of creating digital index cards which will help students in future labs with these lower limb dissections. Long before they began the project they asked for, and received, my permission to take and subsequently use the photos to create the digital index cards.

As a final check—as protection for themselves, their work and my responsibility for cadaveric donations—I will vet the final versions of the digital index cards to ensure there are no concerns regarding the photographs and the cadaveric material.

Thank you,

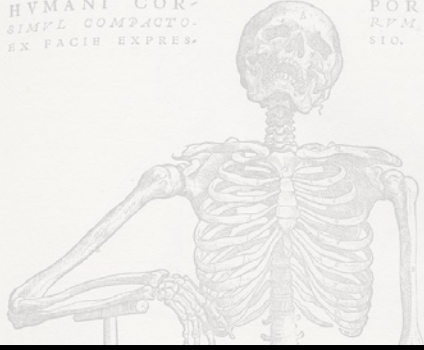
Kurt McBumey



a place of mind
THE UNIVERSITY OF BRITISH COLUMBIA

Faculty of Medicine
Southern Medical Program

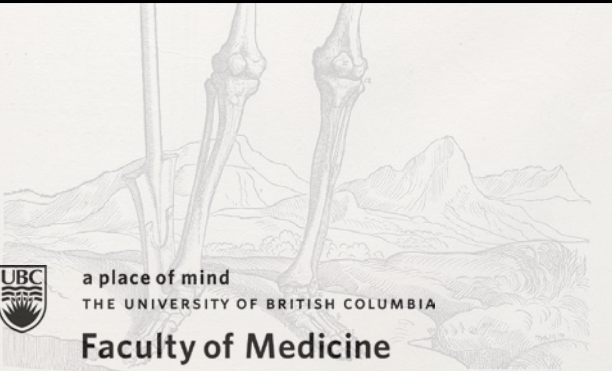
DE HVMANI CORPORIS FABRICA LIBER I. 163
HVMANI COR-
SIMVL COMPACTO.
EX FACIE EXPRES.
PORIS OSSIVM
RPN. ANTERIORI
SID.



LABORATORY 6

~

THE HAND



a place of mind
THE UNIVERSITY OF BRITISH COLUMBIA

Faculty of Medicine

Southern Medical Program

INDEX

OSTEOLOGY

Capitate
Distal Interphalangeal Joint (DIP)
Distal Phalange
Hamate
Lunate
Metacarpophalangeal Joint (MCP)
Middle Phalange
Pisiform
Proximal Interphalangeal Joint (PIP)
Scaphoid
Trapezium
Trapezoid
Triquetrum

OTHER

Flexor Digitorum Profundus
Tendons
Flexor Digitorum Superficialis
Tendons
Flexor Pollicis Longus Tendon
Median Nerve
Palmar Aponeurosis
Radial Artery
Superficial Palmar Arch
Ulnar Artery
Ulnar Nerve

MUSCLES

Abductor Digiti Minimi
Abductor Pollicis Brevis
Adductor Pollicis
Dorsal Interossei (1st)
Flexor Digiti Minimi
Flexor Pollicis Brevis
Lumbricals (1-4)
Opponens Digiti Minimi
Opponens Pollicis
Palmar Interossei (Identify only)

***Items in red are not labeled in slide package**



a place of mind
THE UNIVERSITY OF BRITISH COLUMBIA

Faculty of Medicine

Southern Medical Program

The Wrist

Structures in View:

Trapezium

Scaphoid

Lunate

Triquetrum

Pisiform

Hamate

Capitate

Trapezoid

Metacarpals

Radius



a place of mind
THE UNIVERSITY OF BRITISH COLUMBIA

Faculty of Medicine

Southern Medical Program

The Hand

Structures in View:

Distal Phalanges

Middle Phalanges

Proximal Phalanges

Metacarpals

MCPs

DIPs

PIPs

Interphalangeal Joint



a place of mind
THE UNIVERSITY OF BRITISH COLUMBIA

Faculty of Medicine

Southern Medical Program

The Left Wrist

Structures in View:

Flexor Retinaculum

Abductor Pollicis Brevis

Flexor Pollicis Brevis

Ulnar Artery

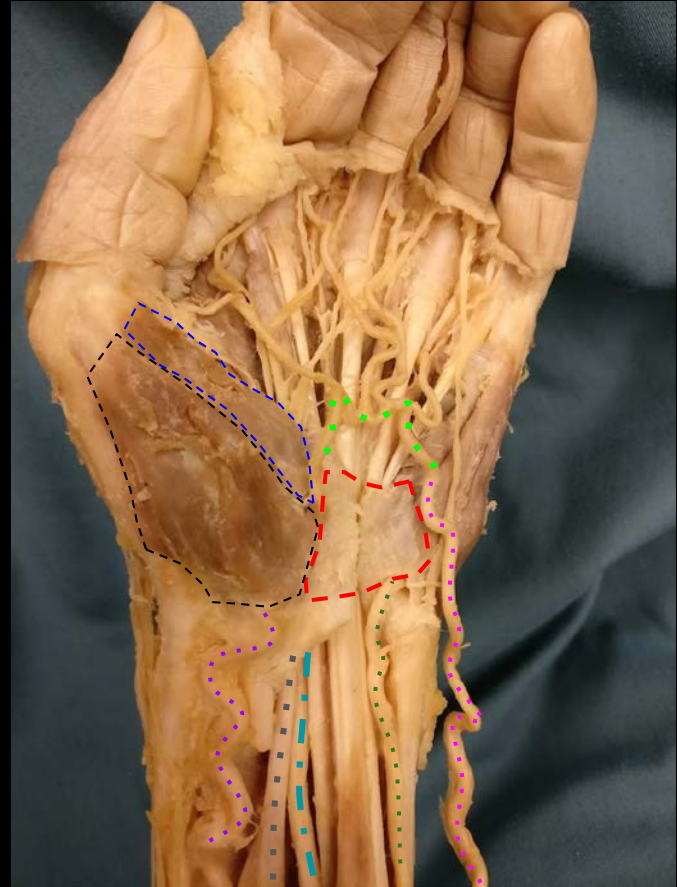
Superficial Palmar Arch

Radial Artery

Ulnar Nerve

Median Nerve

Flexor Pollicis Longus Tendon



a place of mind
THE UNIVERSITY OF BRITISH COLUMBIA

Faculty of Medicine

Southern Medical Program

The Hand

Structures in View:

Abductor Digiti Minimi

Flexor Digiti Minimi

Opponens Digiti Minimi

Adductor Pollicis

Flexor Pollicis Brevis

Abductor Pollicis Brevis

Lumbricals

First Dorsal Interossei



a place of mind
THE UNIVERSITY OF BRITISH COLUMBIA

Faculty of Medicine

Southern Medical Program

The Hand

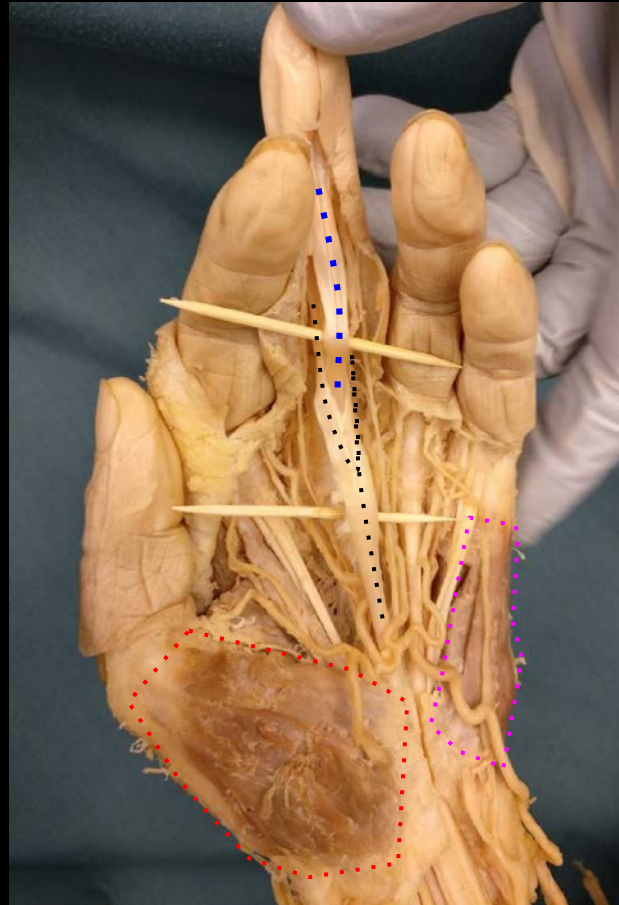
Structures in View:

Flexor Digitorum Superficialis Tendon

Flexor Digitorum Profundus Tendon

Thenar Eminence

Hypothenar Eminence



a place of mind
THE UNIVERSITY OF BRITISH COLUMBIA

Faculty of Medicine

Southern Medical Program

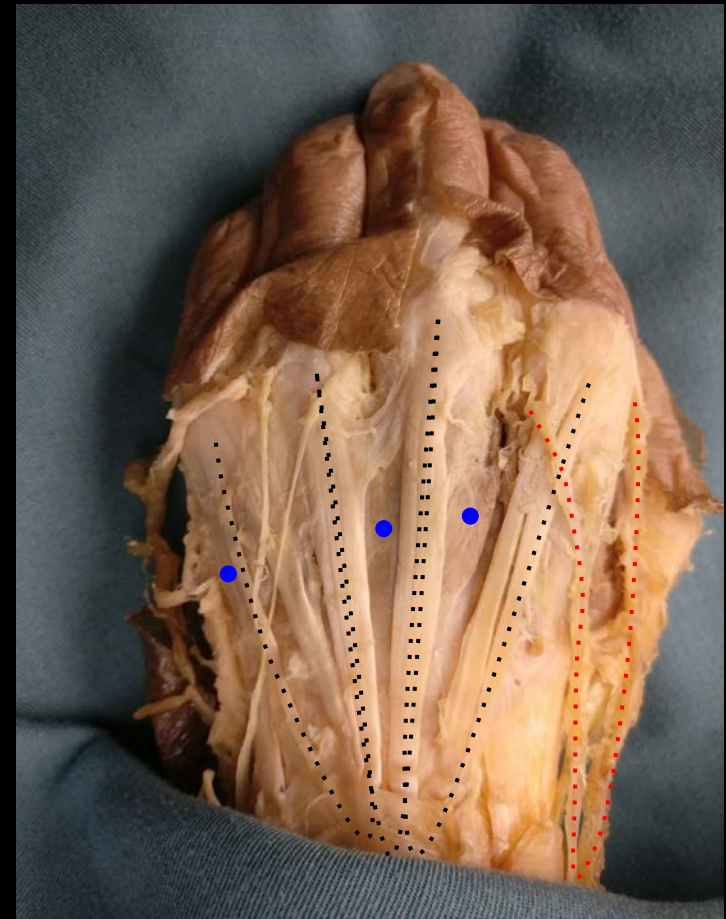
The Hand

Structures in View:

Extensor Digitorum Tendons

Dorsal Interossei

Superficial Branch of Radial Nerve



a place of mind
THE UNIVERSITY OF BRITISH COLUMBIA

Faculty of Medicine

Southern Medical Program

The Left Forearm

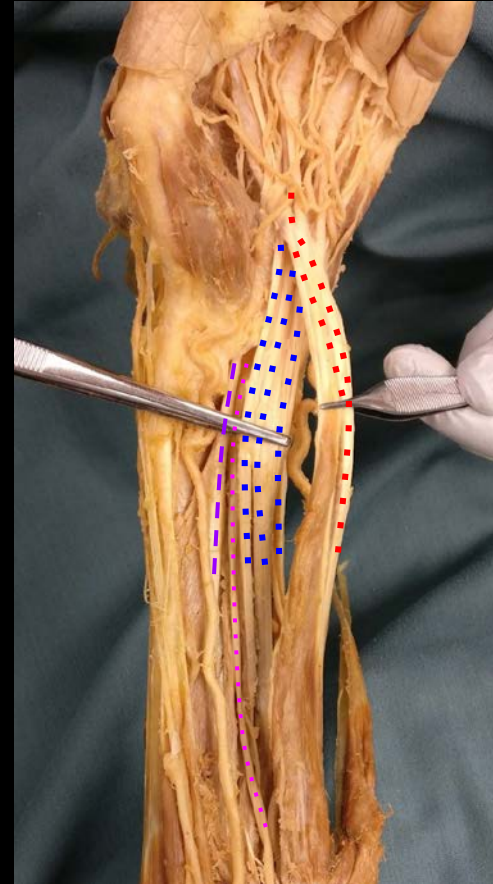
Structures in View:

Flexor Digitorum Superficialis Tendons

Flexor Digitorum Profundus Tendons

Flexor Pollicis Longus Tendon

Median Nerve



a place of mind
THE UNIVERSITY OF BRITISH COLUMBIA

Faculty of Medicine

Southern Medical Program

The Left Ventral Forearm

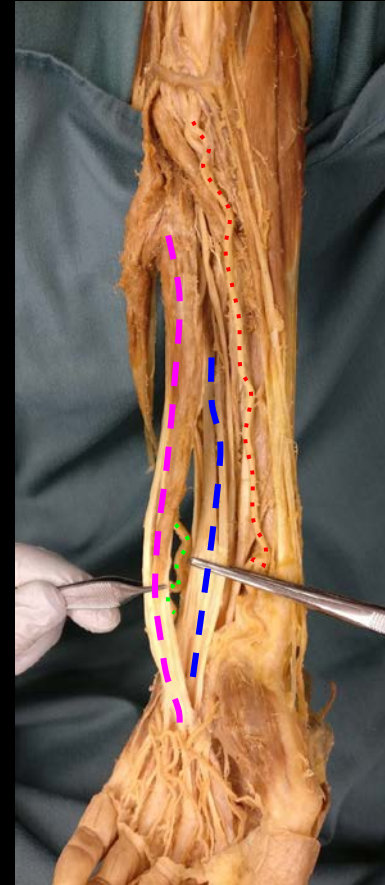
Structures in View:

Flexor Digitorum Superficialis

Flexor Digitorum Profundus

Radial Artery

Ulnar Artery



a place of mind
THE UNIVERSITY OF BRITISH COLUMBIA

Faculty of Medicine

Southern Medical Program

Abductor Digiti Minimi

Action: Abduction of Pinky Finger

Innervation: Ulnar Nerve



a place of mind
THE UNIVERSITY OF BRITISH COLUMBIA

Faculty of Medicine
Southern Medical Program

Abductor Pollicis Brevis

Action: Abduction of Thumb

Innervation: Median Nerve



a place of mind
THE UNIVERSITY OF BRITISH COLUMBIA

Faculty of Medicine
Southern Medical Program

Adductor Pollicis

Action: Adduction of Thumb

Innervation: Ulnar Nerve



a place of mind
THE UNIVERSITY OF BRITISH COLUMBIA

Faculty of Medicine

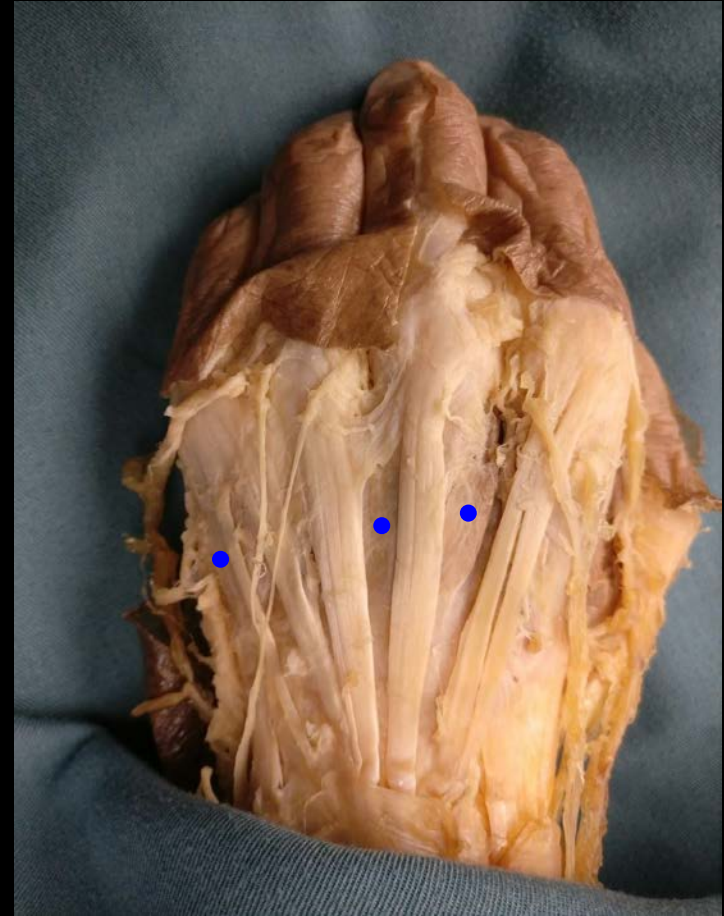
Southern Medical Program

Dorsal Interossei

Action: Abduction of Fingers

Innervation: Ulnar Nerve

*Remember 3rd finger is midline



a place of mind
THE UNIVERSITY OF BRITISH COLUMBIA

Faculty of Medicine

Southern Medical Program

Flexor Digiti Minimi

Action: Flexion of Pinky Finger

Innervation: Ulnar Nerve



a place of mind
THE UNIVERSITY OF BRITISH COLUMBIA

Faculty of Medicine

Southern Medical Program

Flexor Pollicis Brevis

Action: Flexion of Thumb

Innervation: Median Nerve



a place of mind
THE UNIVERSITY OF BRITISH COLUMBIA

Faculty of Medicine

Southern Medical Program

Lumbricals

Action: Flexion of Metacarpalphalangeal Joints

Innervation: Median Nerve (i-ii); Ulnar Nerve (iii-iv)



a place of mind
THE UNIVERSITY OF BRITISH COLUMBIA

Faculty of Medicine

Southern Medical Program

Opponens Digiti Minimi

Action: Opposition

Innervation: Ulnar Nerve



a place of mind
THE UNIVERSITY OF BRITISH COLUMBIA

Faculty of Medicine

Southern Medical Program

Opponens Pollicis

Action: Opposition

Innervation: Median Nerve

*Deep to Abductor Pollicis & Flexor Pollicis



a place of mind
THE UNIVERSITY OF BRITISH COLUMBIA

Faculty of Medicine

Southern Medical Program

Palmar Interossei

Action: Adduction of Fingers

Innervation: Ulnar Nerve

*Deep structures, not visible on this hand

**Remember 3rd finger is midline



a place of mind
THE UNIVERSITY OF BRITISH COLUMBIA

Faculty of Medicine

Southern Medical Program

References

- Photo source: <https://nyamcenterforhistory.org/tag/andreas-vesalius/>
- Kurt McBurney's Epic Notes & Drawings!



a place of mind
THE UNIVERSITY OF BRITISH COLUMBIA

Faculty of Medicine

Southern Medical Program

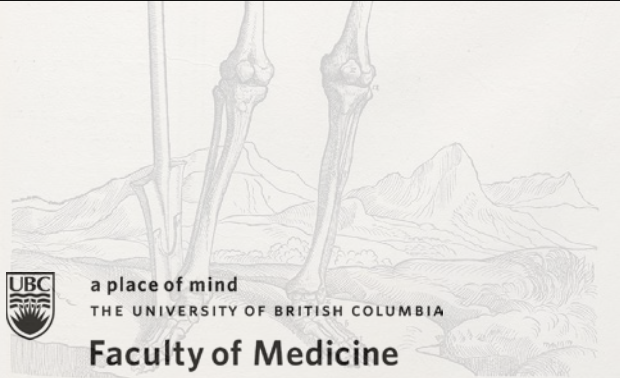
DE HVMANI CORPORIS FABRICA LIBER I. 163
HVMANI COR-
SIMVL COMPACTO.
EX FACIE EXPRES.
PORIS OSSIVM
RPN ANTERIORI
SID.



MEDD 422 ANATOMY



KURT MCBURNEY, ASSOCIATE TEACHING PROFESSOR - IMP
NICHOLAS BYERS - SMP
PETER BAUMEISTER - SMP



a place of mind

THE UNIVERSITY OF BRITISH COLUMBIA

Faculty of Medicine

Southern Medical Program

Proof of Permission for Cadaveric Photos



Island Medical Program

The University of British Columbia
Faculty of Medicine MD
Undergraduate Program
delivered in collaboration with
the University of Victoria

Kurt McBumey
Associate Teaching Professor
Island Medical Program/Division of Medical Sciences
University of British Columbia and University of Victoria
mcbumey@uvic.ca
250-472-5336 (office)
250-418-1542 (cell)

To Whom It May Concern:

During 6 week FLEX cycle of April/May 2018, Peter Baumeister and Nick Byers completed a dissection/learning resource project here at the Island Medical Program. They completed dissections of the lower limb corresponding to the upcoming fall gross anatomy laboratories.

As part of this project they took photographs of their dissections with the purpose of creating digital index cards which will help students in future labs with these lower limb dissections. Long before they began the project they asked for, and received, my permission to take and subsequently use the photos to create the digital index cards.

As a final check—as protection for themselves, their work and my responsibility for cadaveric donations—I will vet the final versions of the digital index cards to ensure there are no concerns regarding the photographs and the cadaveric material.

Thank you,

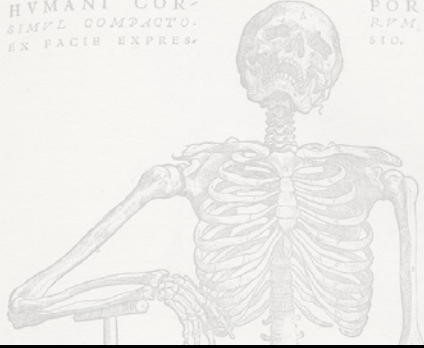
Kurt McBumey



a place of mind
THE UNIVERSITY OF BRITISH COLUMBIA

Faculty of Medicine
Southern Medical Program

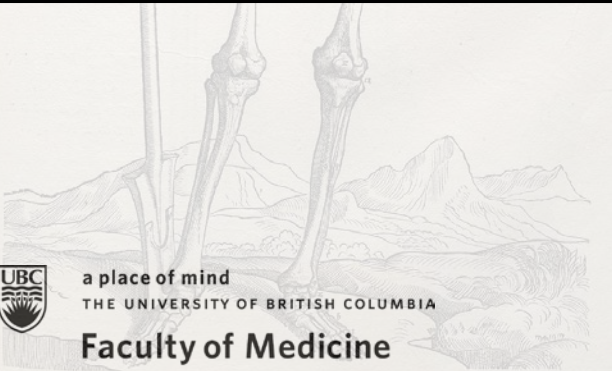
DE HVMANI CORPORIS FABRICA LIBER I. 163
HVMANI COR-
SIMVL COMPACTO.
EX FACIE EXPRES.
PORIS OSSIVM
RPN. ANTERIORI
SID.



LABORATORY 7

~

LOWER URINARY TRACT



a place of mind

THE UNIVERSITY OF BRITISH COLUMBIA

Faculty of Medicine

Southern Medical Program

INDEX

OSTEOLOGY

Anterior Superior Iliac Spine

Coccyx

Greater Sciatic Foramen

Greater Sciatic Notch

Hip (Pelvic) Bone

Iliac Crest

Iliac Fossa

Ilium

Ischial Spine

Ischial Tuberosity

Ischiopubic (Pubic) Arch

Lesser Sciatic Foramen

Lesser Sciatic Notch

Obturator Foramen

a place of mind
THE UNIVERSITY OF BRITISH COLUMBIA

Faculty of Medicine

Southern Medical Program

Pubic Crest

Pubic Symphysis

Pubic Tubercle

Sacrospinous Ligament

Sacrotuberous Ligament

Sacrum

ANATOMY

Anal Triangle

Bulb of Penis

Bulbospongiosus Muscle

Cavernous Artery

Common Iliac Artery

Corpus Cavernosum

Corpus Spongiosum

Cremaster Muscle and Fascia

Crus of Penis

Dorsal Artery of Penis

Dorsal Nerve of Penis

Epididymis

External Iliac Artery

Genital Branch of Genitofemoral Nerve

Genitofemoral Nerve (L1 & 2)

Glans Penis

Gluteus Maximus

Ilioinguinal Nerve (L1)

Inferior Epigastric Vessels

Inferior Rectal Nerve

Internal Iliac

Internal Pudendal Artery and Vein

Interureteric Crest

Ischiocavernosus Muscle

Ischiorectal Fossa

Levator Ani

INDEX cont.

Membranous Urethra

Navicular Fossa

Obturator Artery

Pampiniform Plexus of Veins

Penile Urethra

Perineal Membrane

Perineal Nerve

Preprostatic Urethra

Prostate Gland

Prostatic Urethra

Pudendal Nerve (S2-4)

Rectum

Renal Pelvis

Renal Vessels

Right and Left Kidneys

 a place of mind
THE UNIVERSITY OF BRITISH COLUMBIA

Faculty of Medicine

Southern Medical Program

Seminal Vesicles

Spermatic Cord

Superficial & Deep Inguinal
Rings

Superficial Transverse Perineal
Muscle

Testicular Artery

Testis

Umbilical Artery

Ureter (Note Relationship to Vas
Deferens)

Urinary Bladder

Urinary Bladder Apex

Urinary Bladder Fundus

Urinary Bladder Neck

Urinary Bladder Trigone

Urogenital Triangle

Uvula

Vas Deferens

Vesicular Arteries

*Items in red are not labeled in slide
package

Pelvic Osteology

Structures in View:

Ala Of Sacrum

Pubic Symphysis

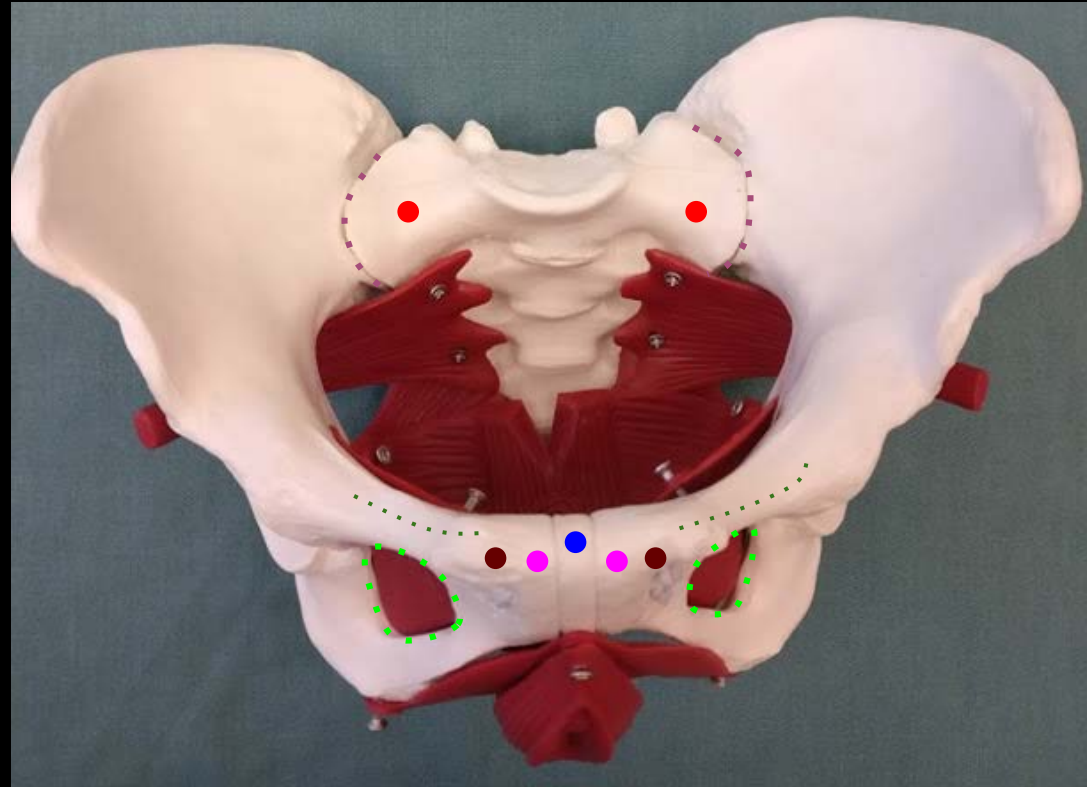
Ischiopubic Arch

Sacroiliac Joint

Obturator Foramen

Pubic Tubercle

Pubic Crest



a place of mind
THE UNIVERSITY OF BRITISH COLUMBIA

Faculty of Medicine

Southern Medical Program

Pelvic Osteology

Structures in View:

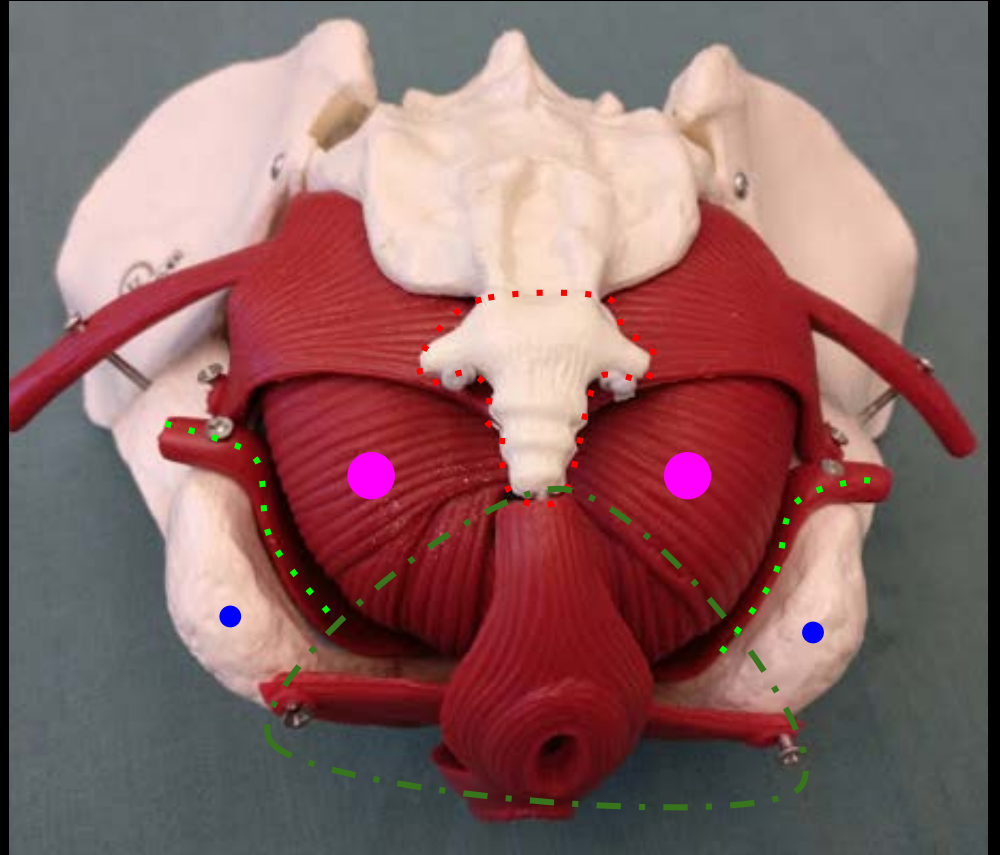
Coccyx

Ischial Tuberosity

Anal Triangle

Obturator Internus

Levator Ani



a place of mind
THE UNIVERSITY OF BRITISH COLUMBIA

Faculty of Medicine

Southern Medical Program

Right Pelvis

Structures in View:

Gluteal Surface

Obturator Foramen

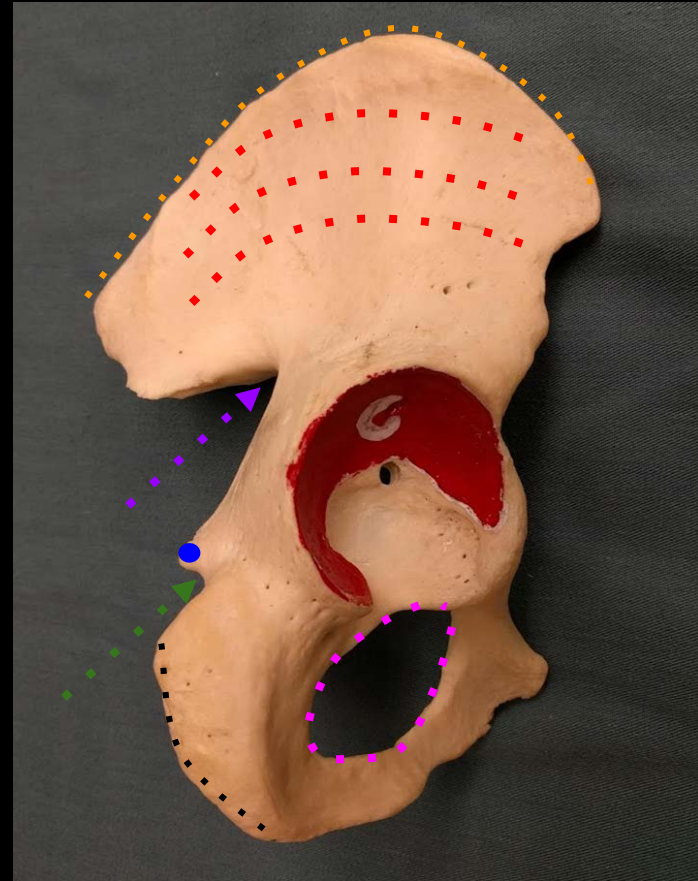
Iliac Crest

Ischial Spine

Ischial Tuberosity

Greater Sciatic Notch

Lesser Sciatic Notch



a place of mind
THE UNIVERSITY OF BRITISH COLUMBIA

Faculty of Medicine

Southern Medical Program

Anterior Superficial Abdominal Wall

Structures in View:

Rectus Abdominis

Rectus Sheath

Inguinal Ligament

Spermatic Cord

Base Of Penis

Superficial Inguinal Ring

Position Of Deep Inguinal Ring

Conjoint Tendon (Position Of)



a place of mind
THE UNIVERSITY OF BRITISH COLUMBIA

Faculty of Medicine

Southern Medical Program

Kidneys and Vasculature

Structures in View:

Abdominal Aorta

Inferior Vena Cava

Kidneys

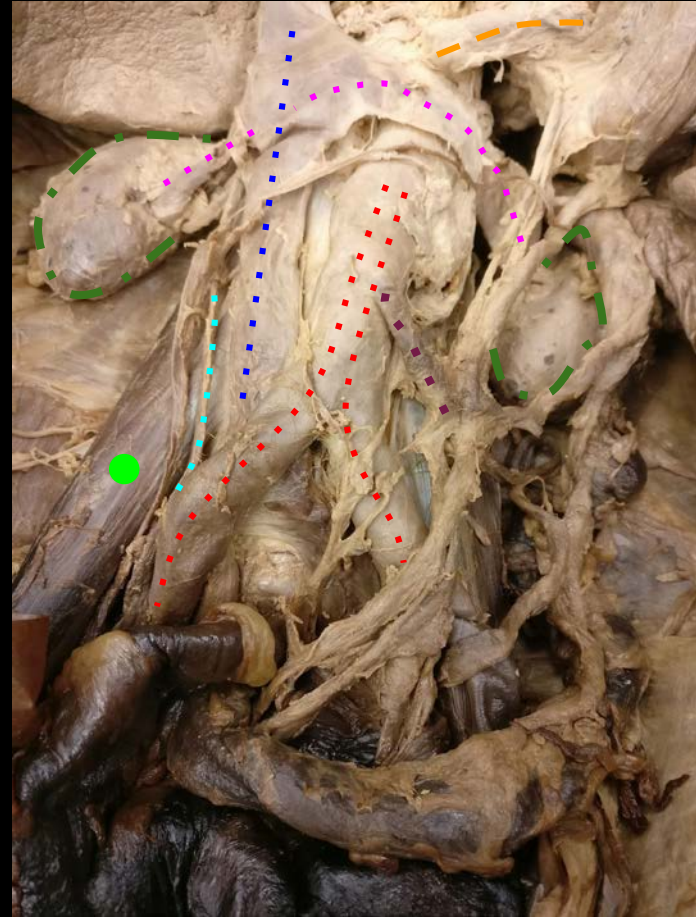
Renal Veins

Right Psoas Muscle

Inferior Mesenteric Artery

Superior Mesenteric Artery

Right Gonadal Artery and Vein



a place of mind
THE UNIVERSITY OF BRITISH COLUMBIA

Faculty of Medicine

Southern Medical Program

Pelvis

Structures in View:

Sacrum

Sacrospinous Ligament

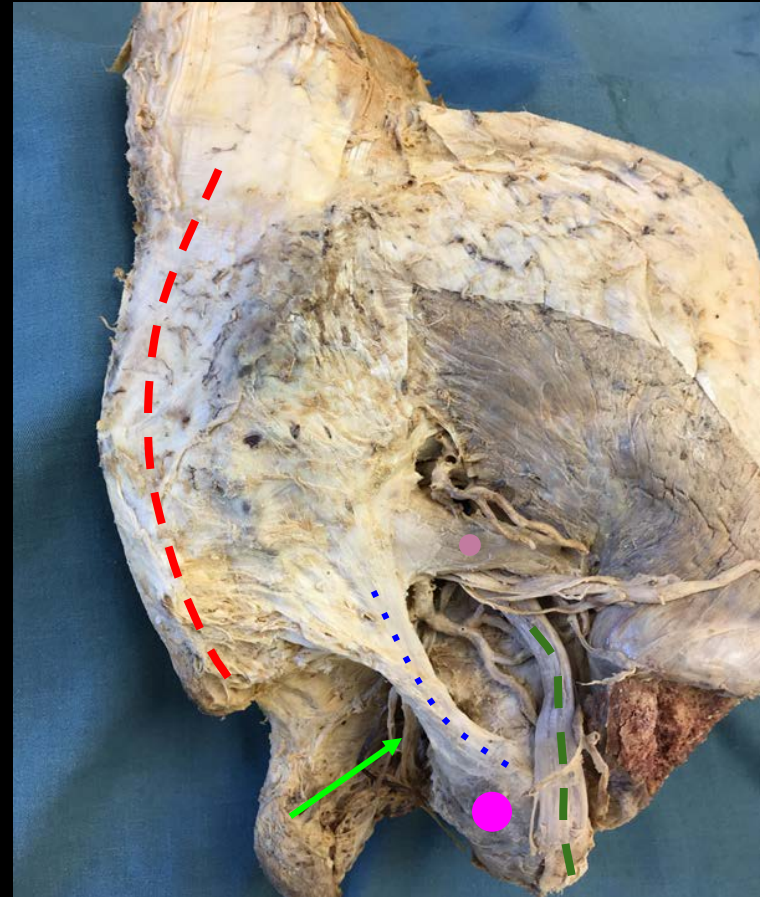
Sacrospinous Ligament (Deep To Sacrotuberous)

Sciatic Nerve from Greater Sciatic Foramen

Piriformis Muscle

Ischial Tuberosity

Pudendal Nerve



a place of mind
THE UNIVERSITY OF BRITISH COLUMBIA

Faculty of Medicine

Southern Medical Program

Male Pelvis

Structures in View:

Sacrum

Urinary Bladder

Prostate

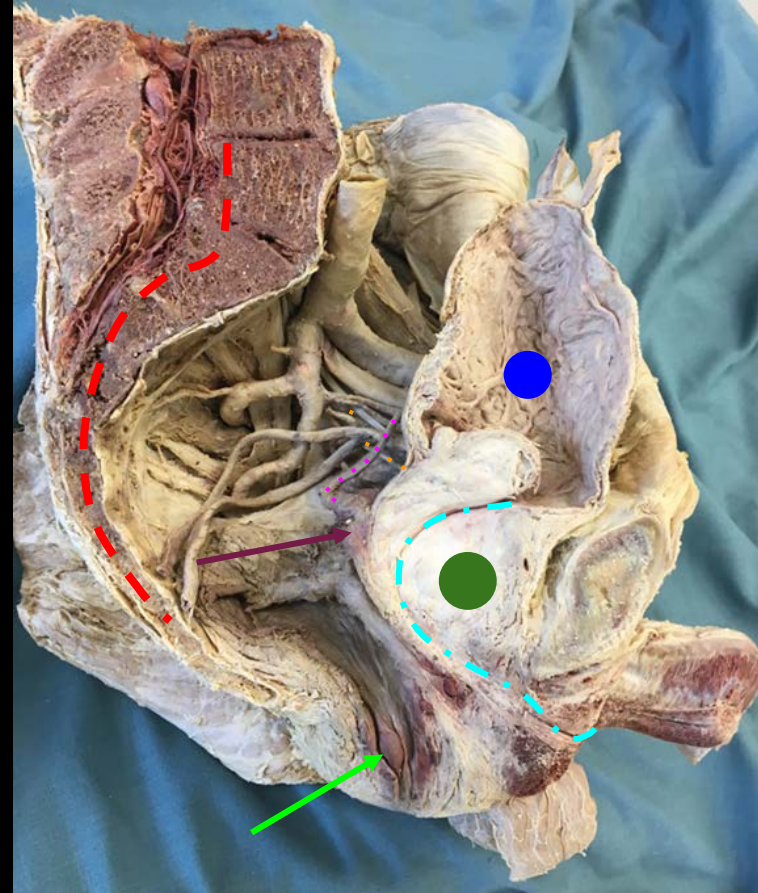
Seminal Vesicle

Urethra

Vas Deferens

Rectum

Ureter



a place of mind
THE UNIVERSITY OF BRITISH COLUMBIA

Faculty of Medicine

Southern Medical Program

Male Pelvis

Structures in View:

Common Iliac Artery

Internal Iliac Artery

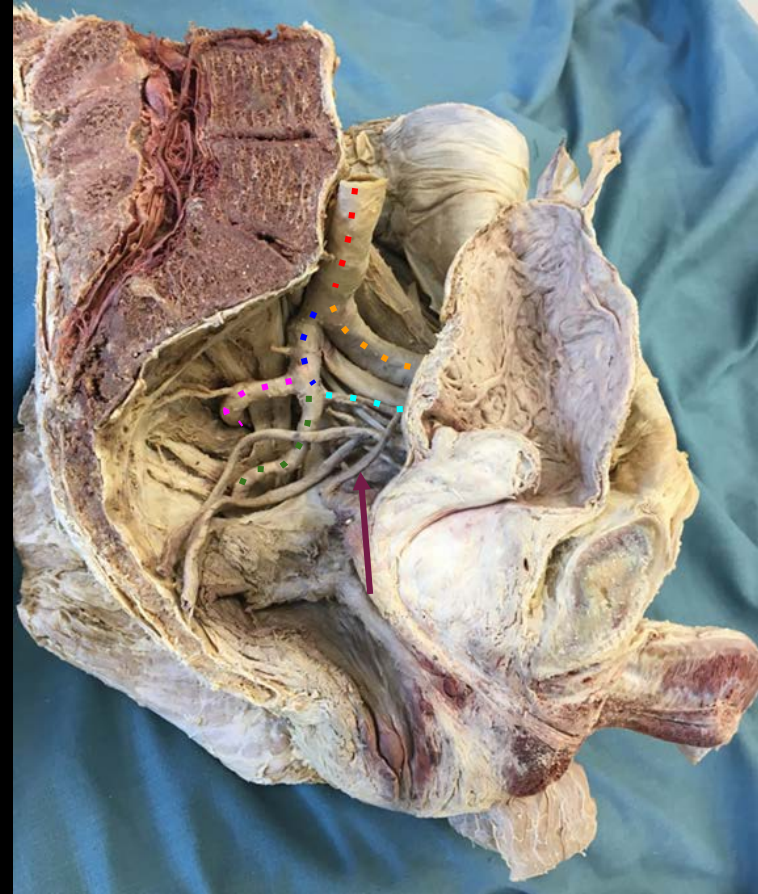
External Iliac Artery

Superior Gluteal Artery

Inferior Gluteal Artery

Vas Deferens

Superior Vesicular Artery



a place of mind
THE UNIVERSITY OF BRITISH COLUMBIA

Faculty of Medicine

Southern Medical Program

Male Pelvis

Structures in View:

Pre-Prostatic Urethra

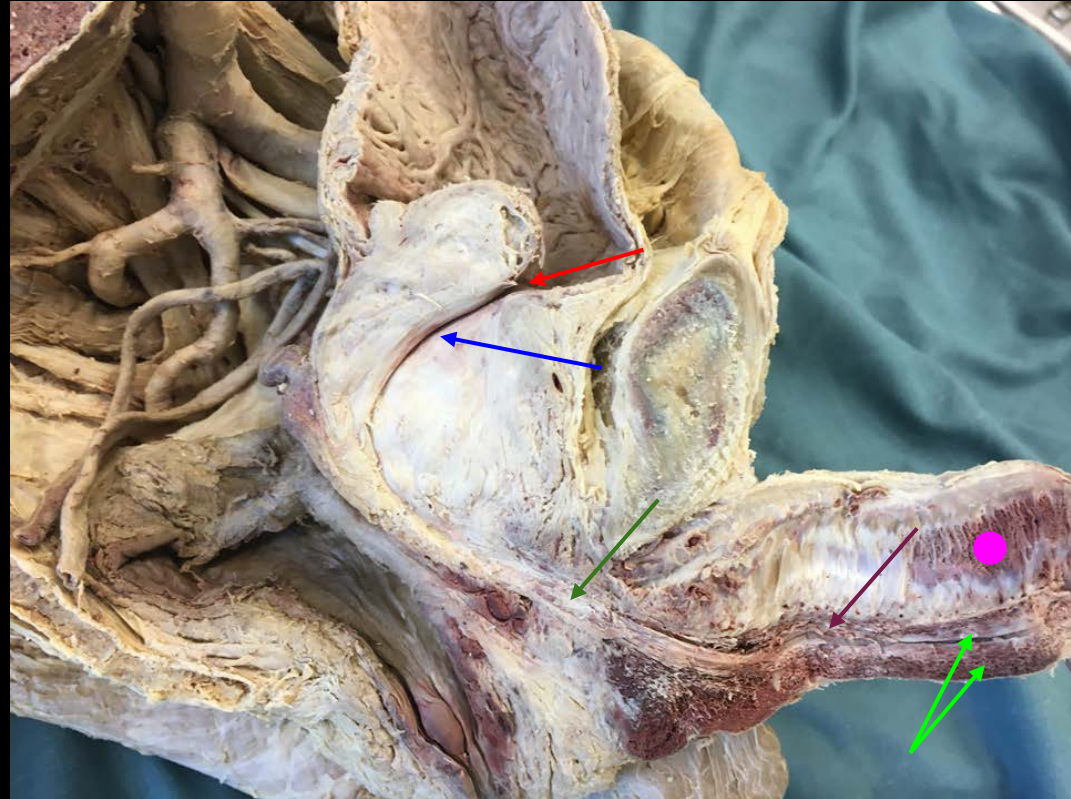
Prostatic Urethra

Membranous Urethra

Spongy Penile Urethra

Corpus Cavernosum

Corpus Spongiosum



a place of mind
THE UNIVERSITY OF BRITISH COLUMBIA

Faculty of Medicine

Southern Medical Program

Male Gonad

Structures in View:

Testis

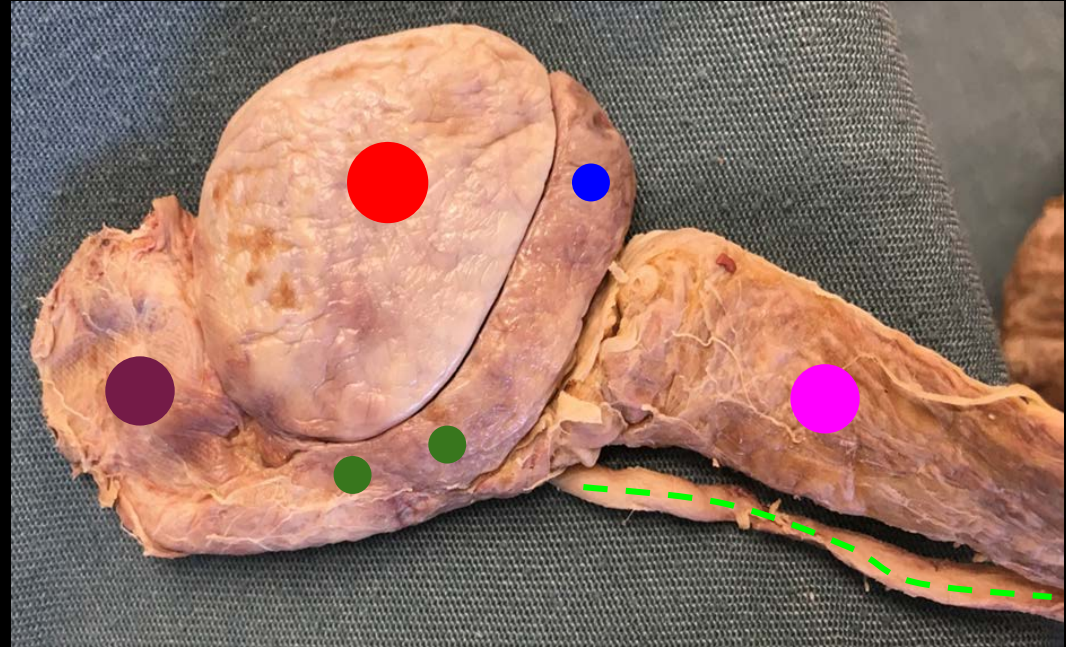
Tail Of Epididymis

Body Of Epididymis

Head Of Epididymis

Spermatic Cord

Vas Deferens



a place of mind
THE UNIVERSITY OF BRITISH COLUMBIA

Faculty of Medicine

Southern Medical Program

Female Pelvis

Structures in View:

Urinary Bladder

Vesicouterine Pouch

Uterus

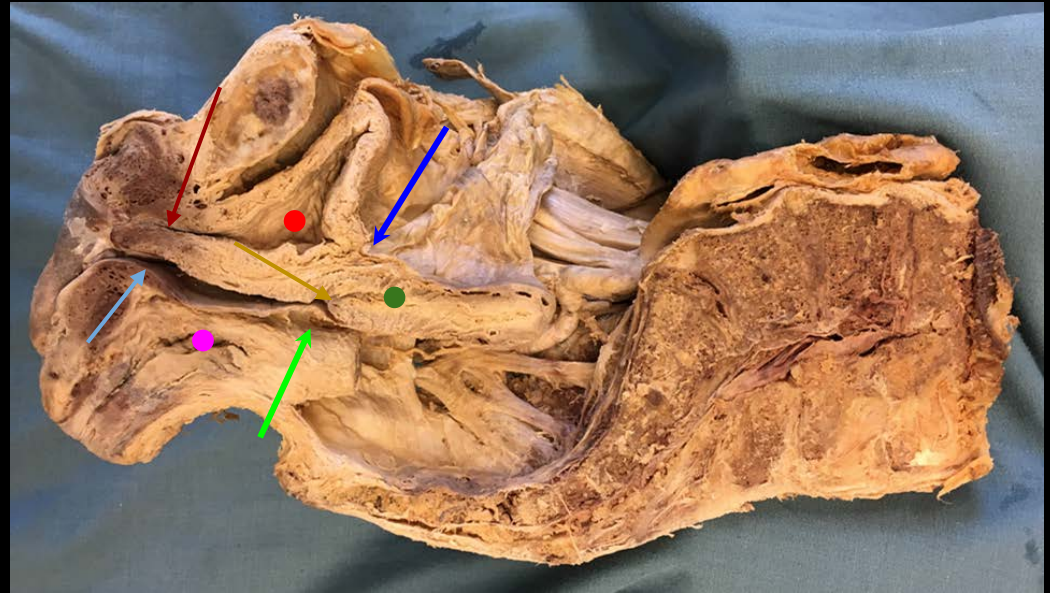
Rectum

Rectouterine Pouch

Vagina

Urethra

Cervix



a place of mind
THE UNIVERSITY OF BRITISH COLUMBIA

Faculty of Medicine

Southern Medical Program

Female Pelvis

Structures in View:

Ovary

Suspensory Ligament Of Ovary

Ligament Of Ovary

Round Ligament Of Uterus

Broad Ligament (Comprised Of 3 Parts)

Mesosalpinx (Covering Fallopian Tube)

Mesovarium (Covering Ovary)

Mesometrium (Covering Uterus)

Bladder



a place of mind
THE UNIVERSITY OF BRITISH COLUMBIA

Faculty of Medicine

Southern Medical Program

Female Pelvis

Structures in View:

Common Iliac Artery

Internal Iliac Artery

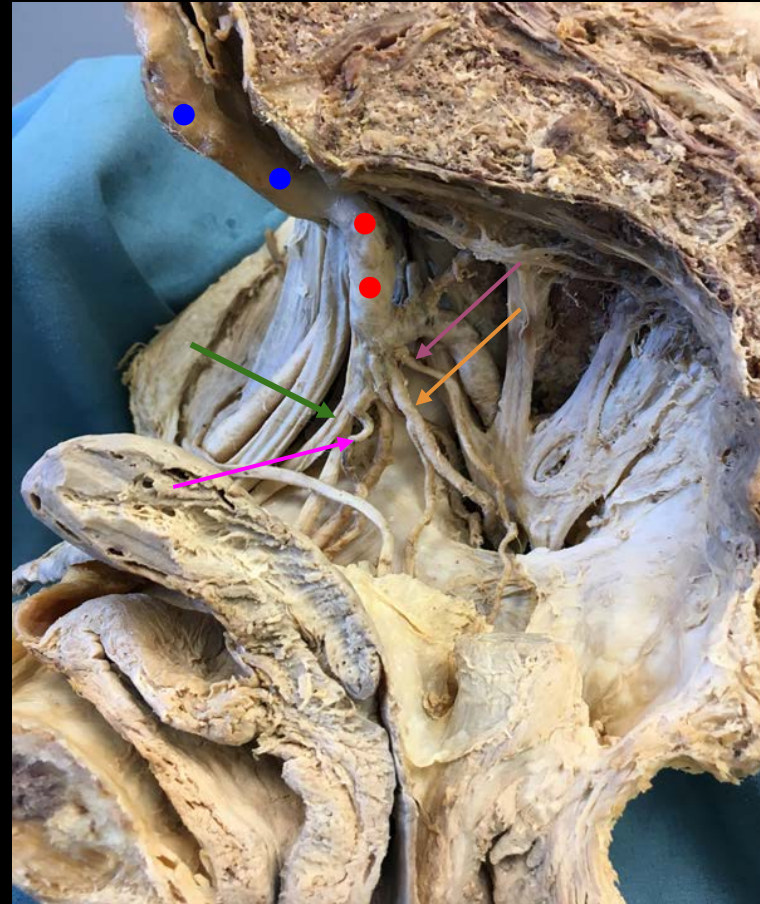
Obliterated Umbilical Artery

Obturator Artery

Pudendal Artery

Uterine Artery

Superior Vesicular Artery



a place of mind
THE UNIVERSITY OF BRITISH COLUMBIA

Faculty of Medicine

Southern Medical Program

References

- Photo source: <https://nyamcenterforhistory.org/tag/andreas-vesalius/>



a place of mind
THE UNIVERSITY OF BRITISH COLUMBIA

Faculty of Medicine

Southern Medical Program